

Road Transport (General) (Application of Road Transport Legislation) Declaration 2009 (No 6)

Disallowable instrument DI2009—242

made under the

***Road Transport (General) Act 1999*, section 12 (Power to include or exclude areas in road transport legislation)**

1 Name of instrument

This instrument is the *Road Transport (General) (Application of Road Transport Legislation) Declaration 2009 (No 6)*.

2 Commencement

This instrument commences on 5 December 2009.

3 Declaration

I declare that the road transport legislation does not apply to a road or road related area that is a special stage of the 2009 Rallye des Femmes.

4 Period of effect of declaration

The declaration has effect on 5 December 2009 in relation to a special stage for the event for any period beginning when an event official declares (however described) the stage active for a testing session or rally competition and ending when an event official declares (however described) the stage inactive.

5 Definitions

In this instrument:

event means the 2009 Rallye des Femmes.

special stage, for the event, means a road or road related area identified for the event on the attached maps:

- Special Stage 1 – Mouton I;
- Special Stage 2 – Moss-Carlsson I;
- Special Stage 3 – Aitken-Walker I;

- Special Stage 4 – Mouton II;
- Special Stage 5 – Moss-Carlsson II;
- Special Stage 6 – Aitken-Walker II;
- Special Stage 7 – Mouton III;
- Special Stage 8 – Moss-Carlsson III;
- Special Stage 9 – Aitken-Walker III.

6 Expiry

This instrument expires on 6 December 2009.

Jon Stanhope
Minister for Transport

26 November 2009

Itinerary

5th December 2009

2009 Rallye des Femmes

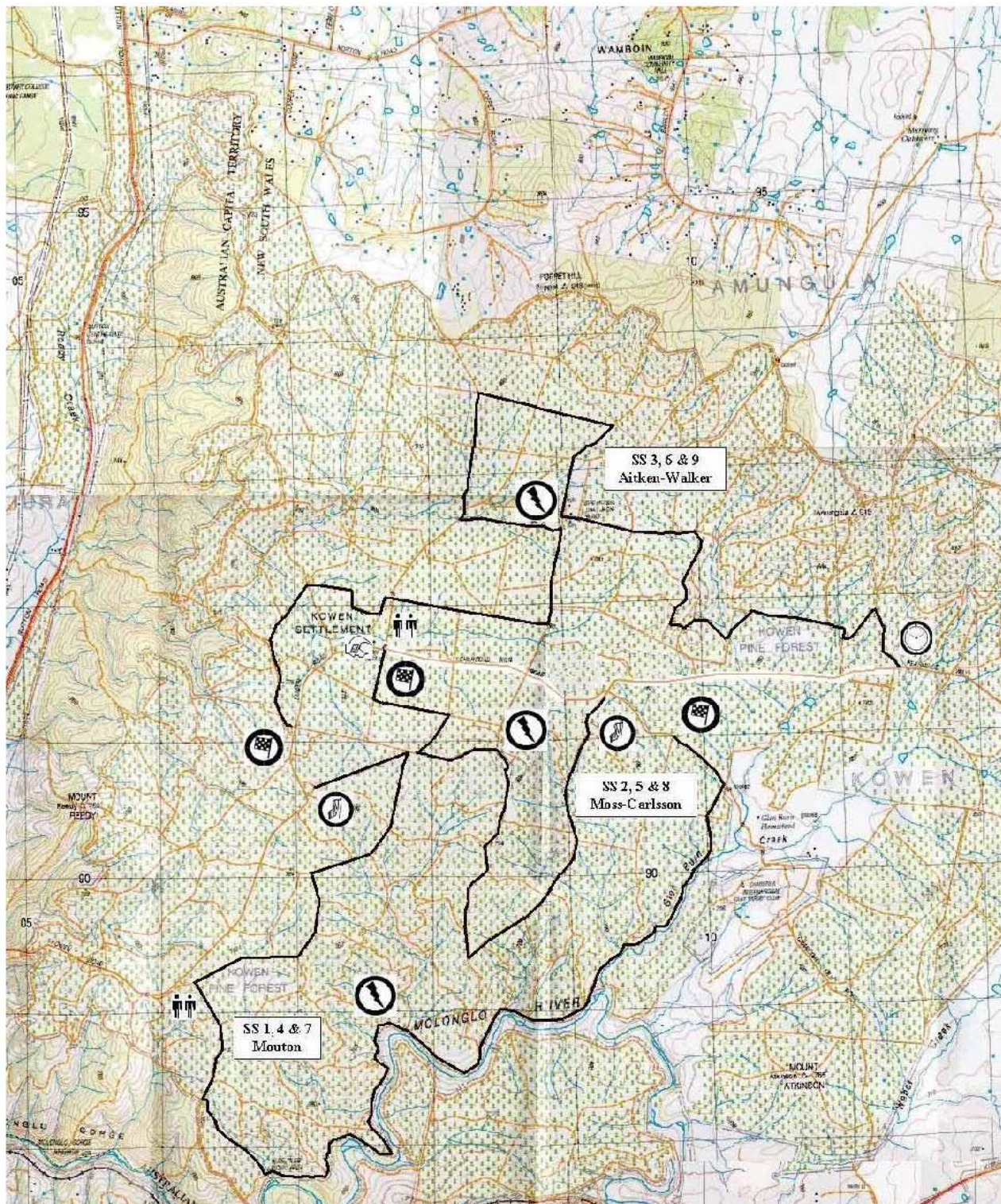


Stage Name	Total distance (km)	Comp. Distance (km)	Section	Target Time (mins)	Service Time (mins)	Time Allowed (h:min)	"000" Start time	"00" Start time	"0" Start time	Car 1 Start time	Your car Start time	Car 30 Start time	Control closes	Average speed (kph)
Start of leg one														
(Liaison from start)	1.40	0.00	1.0-1.1		nil	0:05	10:05	10:25	10:35	10:45		11:43	11:58	16.80
SS 1 Mouton I	12.47	11.69	1.1-1.2	0:08	nil	0:15	10:13	10:33	10:43	10:53		11:51	12:06	49.88
SS 2 Moss-Carlsson I	9.55	5.51	1.2-1.3	0:04	nil	0:13	10:31	10:51	11:01	11:11		12:09	12:24	44.08
SS 3 Aitken-Walker I	13.84	11.33	1.3-1.4	0:08	45	1:05	10:47	11:07	11:17	11:27		12:25	12:40	12.78
SS 4 Mouton II	12.47	11.69	1.4-1.5	0:08	nil	0:15	11:55	12:15	12:25	12:35		13:33	13:48	49.88
SS 5 Moss-Carlsson II	9.55	5.51	1.5-1.6	0:04	nil	0:13	12:13	12:33	12:43	12:53		13:51	14:06	44.08
SS 6 Aitken-Walker II	13.84	11.33	1.6-1.7	0:08	45	1:05	12:29	12:49	12:59	13:09		14:07	14:22	12.78
SS 7 Mouton III	12.47	11.69	1.7-1.8	0:08	nil	0:15	13:37	13:57	14:07	14:17		15:15	15:30	49.88
SS 8 Moss-Carlsson III	9.55	5.51	1.8-1.9	0:04	nil	0:13	13:55	14:15	14:25	14:35		15:33	15:48	44.08
SS 9 Aitken-Walker III	12.45	11.33	1.9-1.10	0:08	nil	0:15	14:11	14:31	14:41	14:51		15:49	16:04	49.80
(Finish)							14:29	14:49	14:59	15:09		16:07	16:22	
TOTAL	107.59	85.59												

Time in Control 0:03 mins
Diff Car 1 - 30 0:58 mins
Late Time 0:15 mins

"000" 0:40 mins
"00" 0:20 mins
"0" 0:10 mins

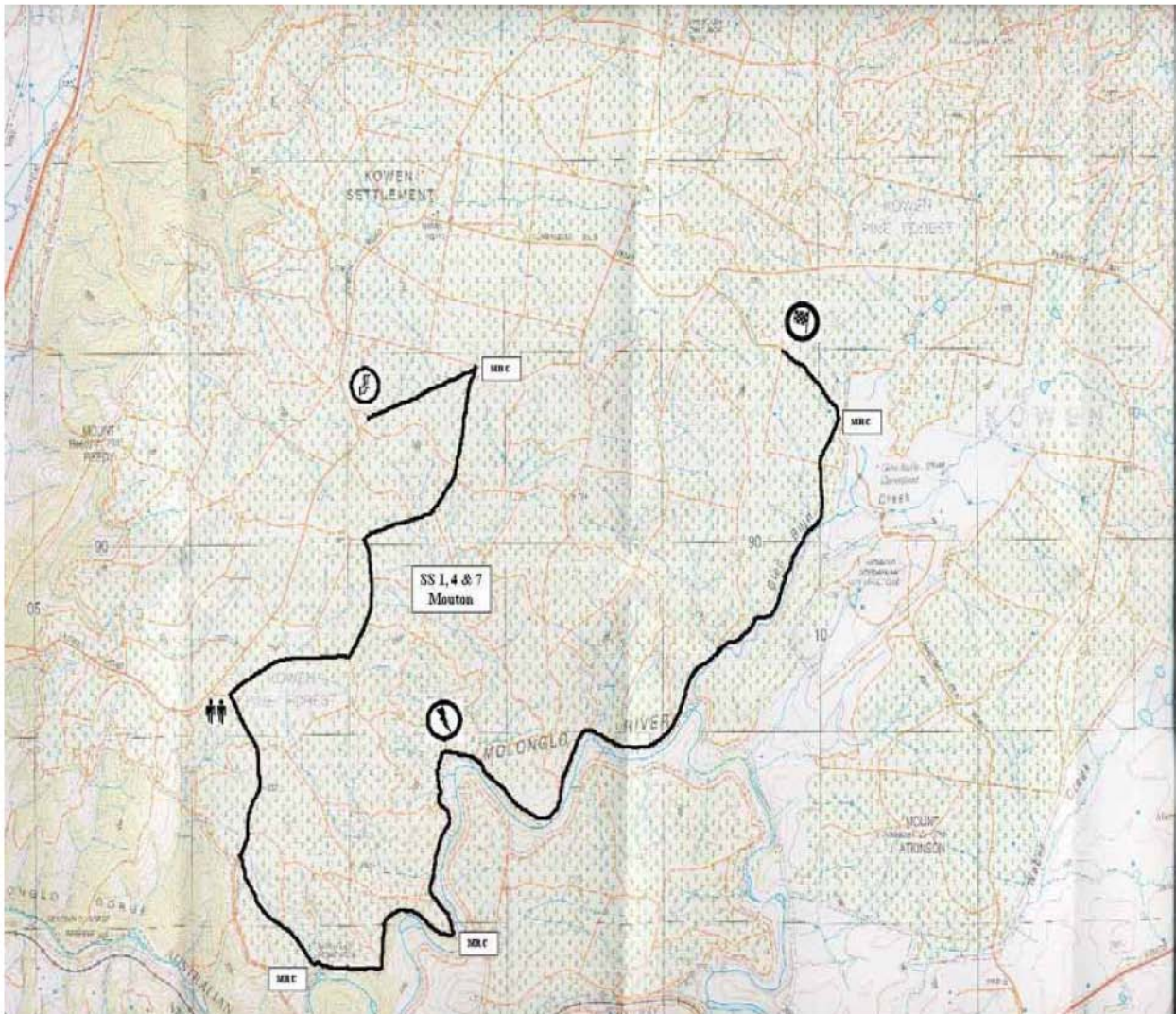
2009 Rallye des Femmes Overview





Special Stage 1, 4 & 7

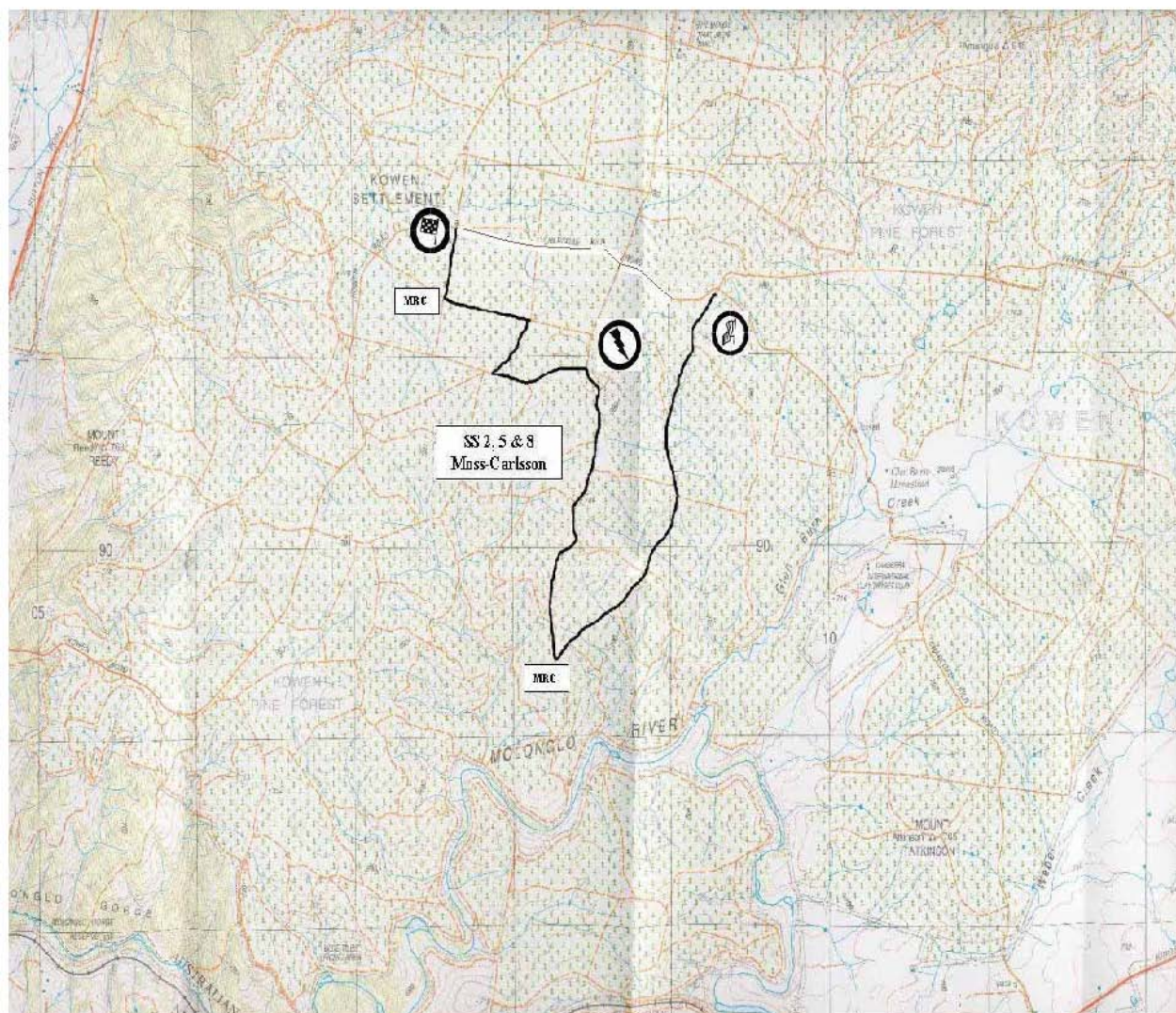
MOUTON I, II & III





Special Stage 2, 5 & 8

MOSS-CARLSSON I, II & III





Special Stage 3, 6 & 9

AITKEN-WALKER I, II & III

