

Australian Capital Territory

## **Public Roads (Hume) Declaration 2010 (No 1)**

**R28/10**

**Notifiable instrument NI2010-395**

made under the

**Public Roads Act 1902, section 18 (Lands reserved as roads may be  
declared public roads)**

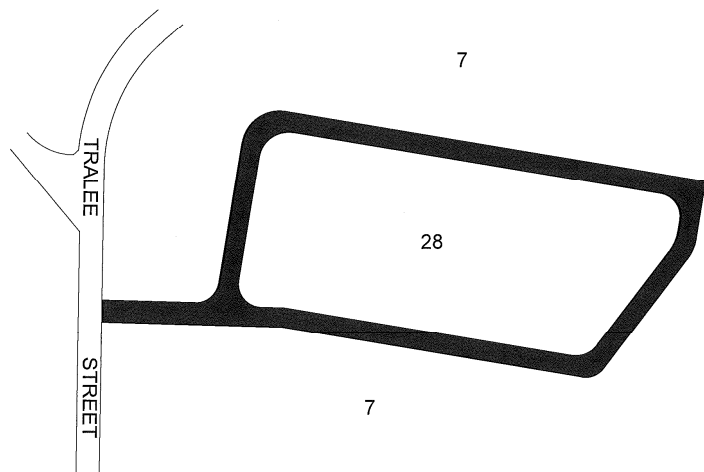
---

I declare that the land described below shall be public roads.

Bill Hirst  
Surveyor-General of the ACT  
Delegate of the Minister

16 July 2010

The land adjacent to Sections 7 and 28 in the Division of Hume, in the District of Jerrabomberra, shown in thick black lines on the plan annexed hereto.



ROAD OPENING

### DIVISION OF HUME

This is the plan annexed to Public Roads (Hume) Declaration 2010 (No 1) signed on

this 16<sup>th</sup> day of July 2010.

.....  
Delegate's Initials