

Heritage (Decision about Registration of Umbagong District Park Grinding Grooves, Latham) Notice 2017

Notifiable Instrument NI2017—66

made under the

Heritage Act 2004, s40 (Decision about registration)

1 Name of instrument

This instrument is the *Heritage (Decision about Registration of Umbagong District Park Grinding Grooves, Latham) Notice 2017*.

2 Decision about registration

On 9 February 2017, the ACT Heritage Council (the **Heritage Council**) decided to register Umbagong District Park Grinding Grooves, part Block 143, Section 4, Latham (the **Place**).

3 Registration details of the Place

The registration details of the Place are in the schedule.

4 Reasons for the decision

The Heritage Council decided to register the Place because it has heritage significance as it meets one or more of the heritage significance criteria in section 10 of the *Heritage Act 2004*, as set out in the schedule.

5 Date registration takes effect

The registration of the Place takes effect on the day after this notice is notified.

6 Revocation

The *Heritage (Decision about Provisional Registration of Umbagog District Park Grinding Grooves, Latham) Notice 2016 NI2016—547* is revoked.

Fiona Moore
A/g Secretary (as delegate for)
ACT Heritage Council
9 February 2017



ACT Heritage Council

AUSTRALIAN CAPITAL TERRITORY
HERITAGE REGISTER
(Registration)

For the purposes of s. 40 of the *Heritage Act 2004*, an entry to the heritage register has been prepared by the ACT Heritage Council for the following place:

Umbagog District Park Grinding Grooves

part Block 143, Section 4, Latham

DATE OF REGISTRATION

9 February 2017 Notifiable Instrument: 2017– 66

Copies of the Register Entry are available for inspection at ACT Heritage. For further information please contact:

The Secretary
ACT Heritage Council
GPO Box 158
CANBERRA ACT 2601
Telephone 13 22 81

This statement refers to the location of the Umbagong District Park Grinding Grooves as required in s. 12 (b) of the *Heritage Act 2004*.

LOCATION OF THE PLACE

Umbagong District Park Grinding Grooves, (part) Block 143, Section 4, Latham ACT 2615. Located at Umbagong District Park, Macrossan Cres, at lower end of Ginninderra Creek and Lake Ginninderra Corridor.

This section refers to the description of the Umbagong District Park Grinding Grooves as required in s.12(c) of the *Heritage Act 2004*. The attributes described in this section form part of the heritage significance of the place. For the purposes of s. 12(c) of the *Heritage Act 2004*, the boundary of the place is at Image 1.

DESCRIPTION OF THE PLACE

Umbagong District Park Grinding Grooves (previously the ‘**Latham Grinding Grooves**’) consisting of the following attributes:

- Tuff outcrops, including at least 20 grinding grooves in seven groups (A-G), with a site boundary of approximately 50 metres long and 6 metres wide.
 - Group A (dimensions are approximate):
 - Groove 1 – 30cm long x 15cm wide
 - Groove 2 – 29cm long x 20cm wide
 - Group B (dimensions are approximate):
 - Groove 3 – 15cm long x 15cm wide
 - Groove 4 – 18cm long x 15cm wide
 - Groove 5 – 12cm long x 16cm wide
 - Groove 6 – 19cm long x 7cm wide
 - Groove 7 – 28cm long x 11cm wide
 - Groove 8 – 16cm long x 5cm wide
 - Groove 9 – 15cm long x 6cm wide
 - Group C (dimensions are approximate):
 - Groove 10 – 20cm long x 20cm wide
 - Groove 11 – 25cm long x 6cm wide
 - Groove 12 – 20cm long x 8cm wide
 - Group D (dimensions are approximate):
 - Groove 13 – 38cm long x 11cm wide
 - Groove 14 – 30cm long x 9cm wide
 - Group E (dimensions are approximate):
 - Groove 15 – 25cm long x 15cm wide
 - Groove 16 – 15cm long x 12cm wide

- Group F (dimensions are approximate):
 - Groove 17 – 39cm long x 16cm wide
 - Groove 18 – 19cm long x 17cm wide
- Group G (dimensions are approximate):
 - Groove 19 – 26cm x 14cm wide
 - Groove 20 – 30cm long x 10cm wide

This statement refers to the heritage significance of the Umbagog District Park Grinding Grooves as required in s.12(d) of the *Heritage Act 2004*.

STATEMENT OF HERITAGE SIGNIFICANCE

The Umbagog District Park Grinding Grooves are important evidence of Aboriginal cultural history in the ACT as they provide insight into a tradition and way of life by showing that Aboriginal people were at Ginninderra Creek, grinding material crucial in accessing resources from the surrounding region. They relate to the artefact grinding process, water access and utilisation of a limited stone resource, and hold strong cultural association for the Aboriginal community. The production of ground-edge stone axes in the region grew in importance in the last few thousand years and marked a major technological change in Aboriginal material culture [*criterion (a) and (g)*].

Grinding grooves represent an important part of Aboriginal history: the creation of ground-edge stone technology. Surviving evidence for this type of technology is rare in the ACT. The ground-edge stone axe was an indispensable part of Aboriginal peoples' toolkit and wooden digging sticks with fire-hardened ends were also sharpened in artefact grinding grooves. These artefacts were of great importance to Aboriginal people by enabling the exploitation of a wide variety of food resources. The depth and quantity of the artefact grinding grooves at Umbagog District Park reflects continual use involving many visits to the sites. The frequency of grinding groove sites in the ACT is low, and fewer still offer the same interpretive opportunities, lending further rarity to the place. The place is rare among this type of site as it is the only one that is located along Ginninderra Creek, in a lowland context in the north of Canberra. It is likely the grooves extend beneath the shallow layer of silty deposits on the creek margins, and will contribute important information on Aboriginal grinding technologies, particularly in lowland contexts [*criteria (b) and (c)*].

CONSERVATION OBJECTIVE

The guiding conservation objective is that the Umbagog District Park Grinding Grooves shall be conserved and appropriately managed in a manner respecting its heritage significance.

The ACT Heritage Council may adopt heritage guidelines applicable to the place under s25 of the *Heritage Act 2004*.

For further information on guidelines applicable to the place, or for advice on proposed works or development, please contact ACT Heritage on 13 22 81.

REASON FOR REGISTRATION

Umbagog District Park Grinding Grooves has been assessed against the heritage significance criteria and been found to have heritage significance when assessed against criteria [a, b, c, g] under s.10 of the *Heritage Act 2004*.

ASSESSMENT AGAINST THE HERITAGE SIGNIFICANCE CRITERIA

The Council's assessment against the criteria specified in s.10 of the *Heritage Act 2004* is as follows.

In assessing the heritage significance of Umbagong District Park Grinding Grooves, Latham, the Council considered:

- the original nomination and documentary evidence supplied by the nominator;
- the Council's *Heritage Assessment Policy* (February 2015);
- information provided by a site inspection on 30 March 2016 by ACT Heritage; and
- the report by ACT Heritage titled, *Background Information Umbagong District Park Grinding Grooves*, February 2017, containing photographs and information on history, description, condition and integrity; and

Pursuant to s.10 of the *Heritage Act 2004*, a place or object has heritage significance if it satisfies one or more of the following criteria. Future research may alter the findings of this assessment.

(a) importance to the course or pattern of the ACT's cultural or natural history;

Umbagong District Park Grinding Grooves, Latham, meets this criterion.

Grinding grooves are important evidence of Aboriginal cultural history of the ACT as they provide a rare unequivocal glimpse into past tradition and way of life by showing that Aboriginal people were at the sites grinding material that was crucial in accessing resources from the surrounding region. They relate to the artefact grinding process, water access and utilisation of a limited stone resource. The production of ground-edge stone axes in the region grew in importance in the last few thousand years and marked the last major technological change in Aboriginal material culture before European influence.

(b) has uncommon, rare or endangered aspects of the ACT's cultural or natural history;

Umbagong District Park Grinding Grooves, Latham, meets this criterion.

Grinding grooves represent an important part of past Aboriginal life: the creation of ground-edge stone technology. Surviving evidence for this type of technology is rare in the ACT. Stone grinding technology was used by Aboriginal people for many different purposes. Ethnographic, microscopic and residue analysis has shown that grinding technology has been used to shape objects such as stone, bone and wood; process foodstuffs such as seeds, nuts and moths; and to process ochre for use as a pigment. Based on previous research, it is most likely that the thin grooves found at the place are associated with the shaping of ground edge artefacts such as axes. The ground-edge stone axe was an indispensable part of the Aboriginal hunter-gatherer toolkit and would have been used for stripping bark off trees to make baskets, shields and other items. Wooden digging sticks with fire-hardened ends were also sharpened at grinding groove locations. Digging sticks were used to procure roots and tubers for food. These artefacts were of great importance to Aboriginal people by enabling the exploitation of a wide variety of food resources. The depth and quantity of the artefact grinding grooves reflects continual use involving many visits to the sites.

The frequency of grinding groove sites in the ACT is low, and few grinding groove sites offer the same interpretive opportunities, lending further rarity to the place. Not including the Umbagong District Park Grinding Grooves, there are thirteen previously recorded Aboriginal grinding groove

sites recorded in the ACT. Of these, only four are located in the lowland, now suburban, areas of the ACT with the rest located in the alpine areas to the south and southwest of the region. The lowland grinding sites are located in Nicholls in the north and Theodore and Denman Prospect to the south with the Umbagog District Park Grinding Grooves located in between.

(c) potential to yield important information that will contribute to an understanding of the ACT's cultural or natural history;

Umbagog District Park Grinding Grooves, Latham, meets this criterion.

The grooves lie on an outcrop of tuff, which is part of a greater rock mass which extends for at least 50 metres in an east-west direction, and up to six metres in a north-south direction. There is strong potential for grooves to be present beneath the layer of sediment that has built up along the creekline only in recent years, since urban development has altered local hydrology. Physical evidence for additional grinding activities beneath this layer will contribute to an understanding of rare lowland Aboriginal grinding and tool technology in the ACT.

(d) importance in demonstrating the principal characteristics of a class of cultural or natural places or objects;

Umbagog District Park Grinding Grooves, Latham, does not meet this criterion.

While the site provides an example of grinding grooves in a lowland context in the ACT, it is not important in demonstrating the principal characteristics of its class. This is owing to evident deterioration of the stone outcrop and surface wearing of the grooves, and the existence of better preserved and more extensive examples elsewhere, such as Theodore.

(e) importance in exhibiting particular aesthetic characteristics valued by the ACT community or a cultural group in the ACT;

Umbagog District Park Grinding Grooves, Latham, does not meet this criterion.

While all Aboriginal sites are valued by the Aboriginal community in the ACT and surrounds, the place does not demonstrate the aesthetic characteristics of a grinding grooves site beyond the ordinary, due to weathering of the grooves over time. Further, while the Aboriginal community values the place for its association with ancestral connection and a traditional way of life no longer practised, there is insufficient evidence to suggest that the place is valued for its aesthetic qualities.

(f) importance in demonstrating a high degree of creative or technical achievement for a particular period;

Umbagog District Park Grinding Grooves, Latham, does not meet this criterion.

The place does not demonstrate a creative or technical achievement beyond the ordinary, for the period in which it was created. Further, the grooves do not demonstrate a high degree of integrity, having been subject to weathering over time.

(g) has a strong or special association with the ACT community, or a cultural group in the ACT for social, cultural or spiritual reasons;

Umbagong District Park Grinding Grooves, Latham, meets this criterion.

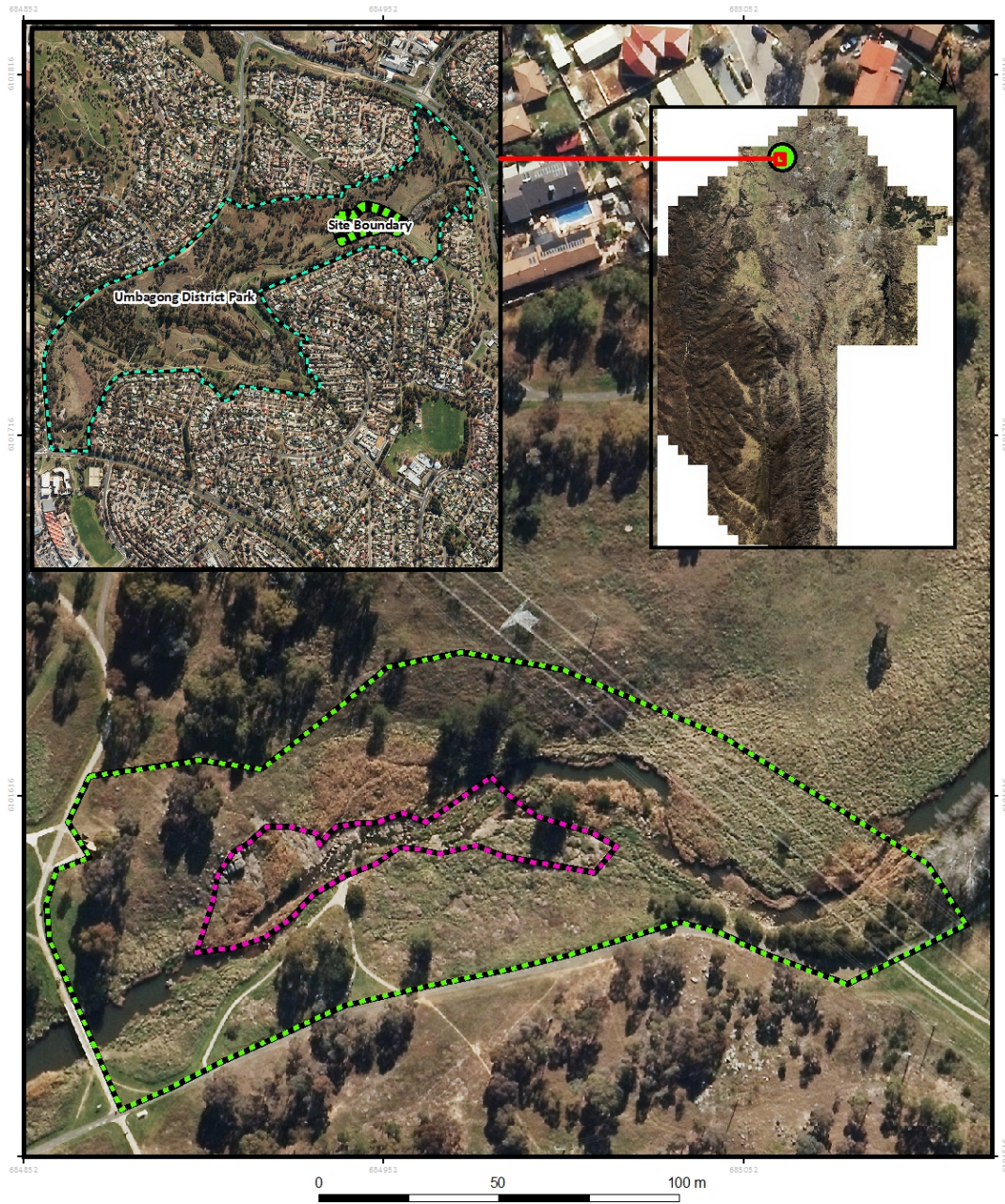
All Aboriginal heritage is considered significant by the Aboriginal community. However, grinding groove sites have special significance as they provide a rare unequivocal glimpse into past activities by showing that Aboriginal people were at this site grinding material that was important for accessing resources from the surrounding region. There are some within the ACT and regional Aboriginal community who organise regular public tour groups to Umbagong District Park in order to broaden local knowledge, awareness and appreciation of the grinding grooves site, and others who engage with local Landcare groups to ensure ongoing management and maintenance of the grooves.

(h) has a special association with the life or work of a person, or people, important to the history of the ACT.

Umbagong District Park Grinding Grooves, Latham, does not meet this criterion.

While the place provides important evidence into past Aboriginal lifeways in the ACT, it does not hold a special association highlighting the achievements with the life of an Aboriginal person, or people, beyond the ordinary, differentiating it from other grinding groove sites in the ACT.

SITE PLAN



Umbagog District Park Grinding Grooves (part) Block 143, Section 4, Latham



Coordinate System: MGA94 Zone 56
Projection: Transverse Mercator
Datum: GDA 94



Image 1 Site Boundary, Umbagog District Park Grinding Grooves