

Australian Capital Territory

Road Transport (General) (Application of Road Transport Legislation) Declaration 2005 (No 11)

Disallowable instrument DI2005—251

made under the

Road Transport (General) Act 1999, s13 (Power to exclude vehicles, persons or animals from road transport legislation)

1 Name of instrument

This instrument is the *Road Transport (General) (Application of Road Transport Legislation) Declaration 2005 (No 11)*.

2 Commencement

This instrument commences on 25 November 2005.

3 Declaration

I declare that the road transport legislation does not apply to competing vehicles participating in a ‘green’ special stage of the Brindabella Motor Sport Club Truss Me National Capital Rally on 26 November 2005.

4 Expiry

This declaration expires on 28 November 2005.

5 Definitions

For this declaration, the following definitions apply:

Competing vehicle means:

Any vehicle used for participating in a ‘green’ special stage of the event.

Event means:

The Brindabella Motor Sport Club Truss Me National Capital Rally on 26 November 2005.

'Green' special stage means:

The period from the time when an event official declares a special stage active for rally competition until the time when an event official declares course control for that special stage closed.

Special stage means:

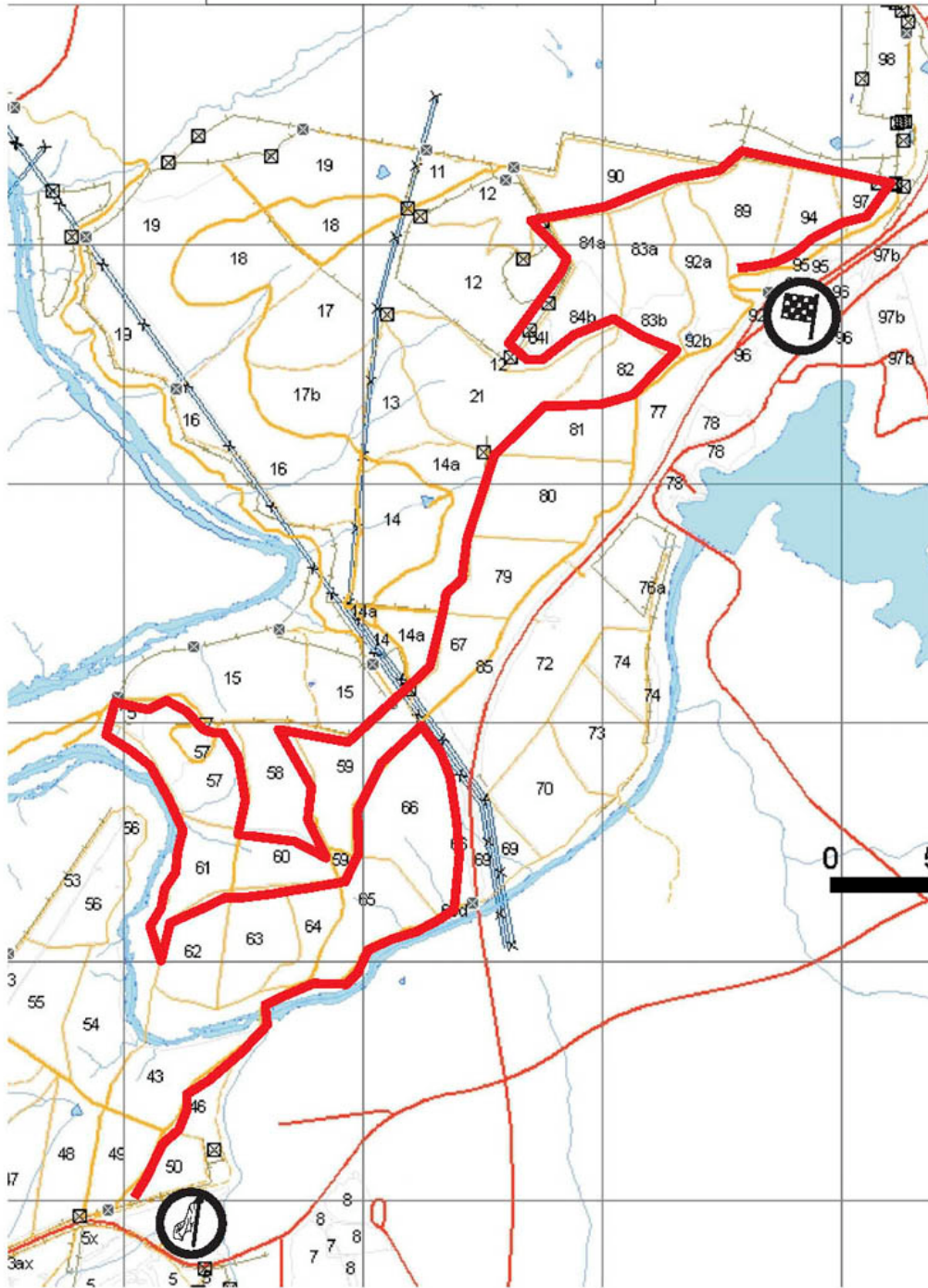
The competitive routes for the following special stages shown on the attached maps:

- Special stage 1 (SS1) – Greenhills I;
- Special stage 2 (SS2) – Blewitts;
- Special stage 3 (SS3) – Dead Horse Gap I;
- Special stage 4 (SS4) – Mineshaft Reverse I;
- Special stage 5 (SS5) – West Knob I;
- Special stage 6 (SS6) – Dead Horse Gap II;
- Special stage 7 (SS7) – Mineshaft Reverse II;
- Special stage 8 (SS8) – West Knob II; and
- Special stage 9 (SS9) – Greenhills II.

John Hargreaves
Minister for Urban Services
18 November 2005

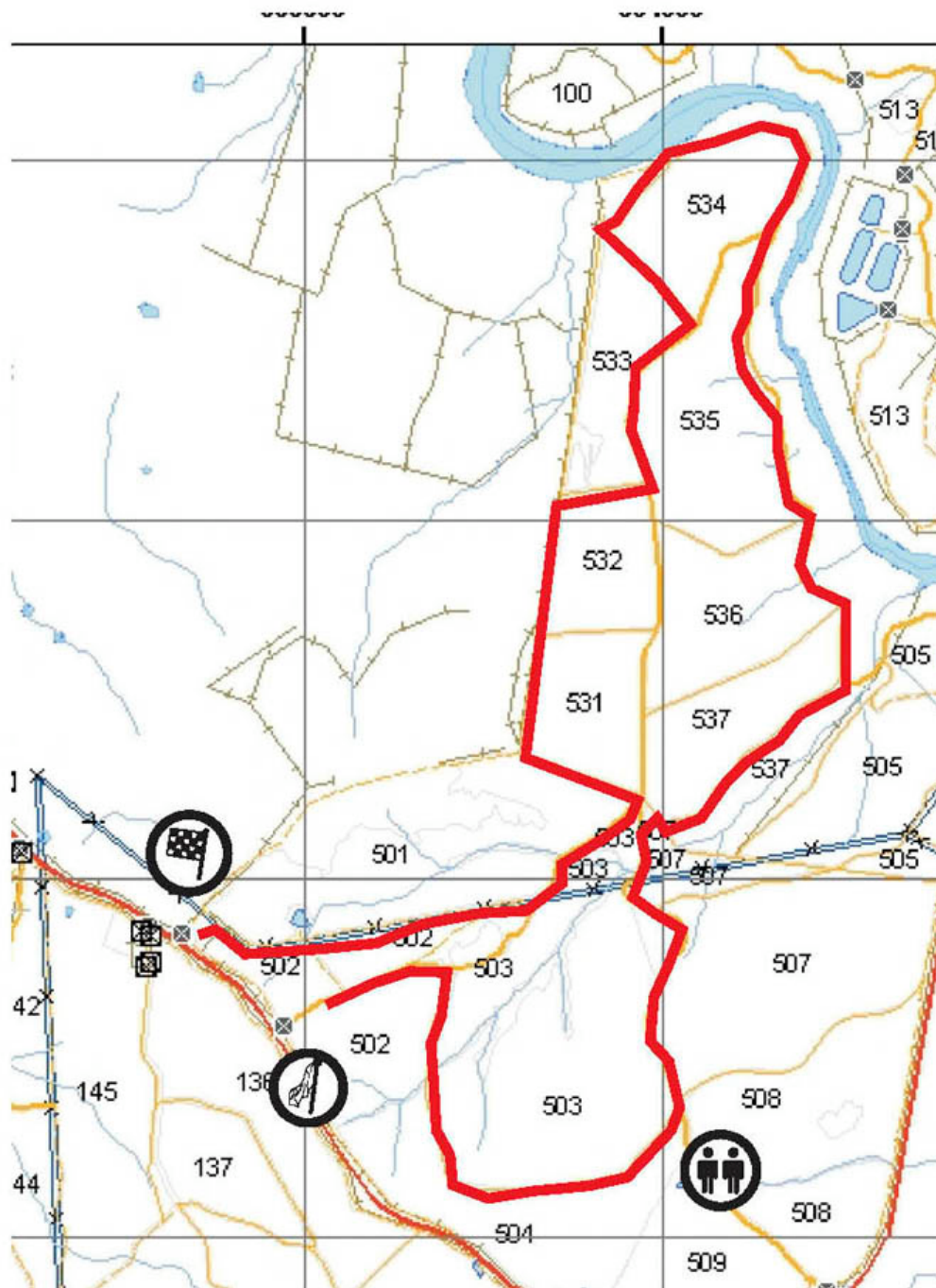
'05 Truss Me National Capital Rally

SS 1, 9 Greenhills



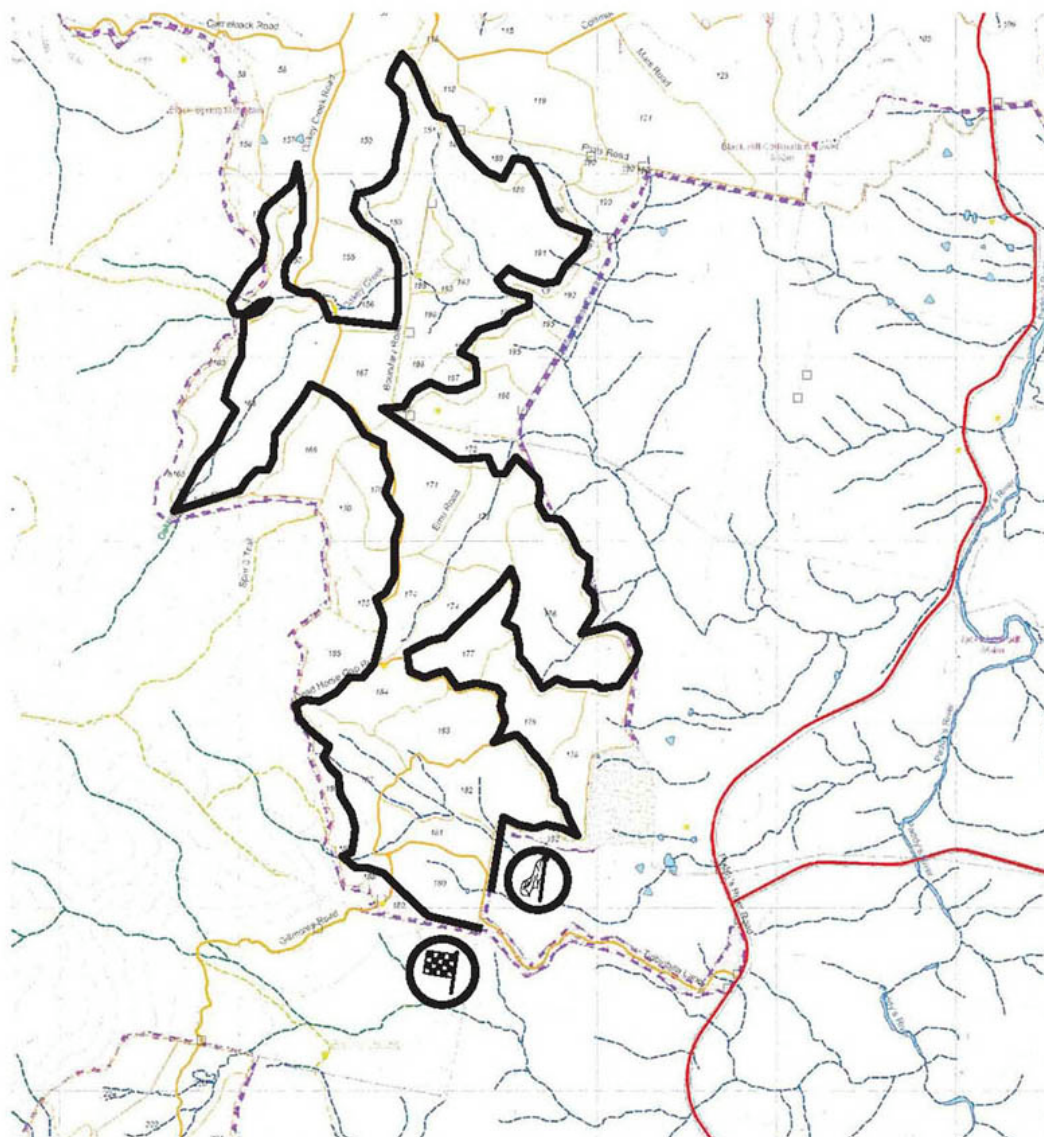
'05 Truss Me National Capital Rally

SS 2 Blewitts



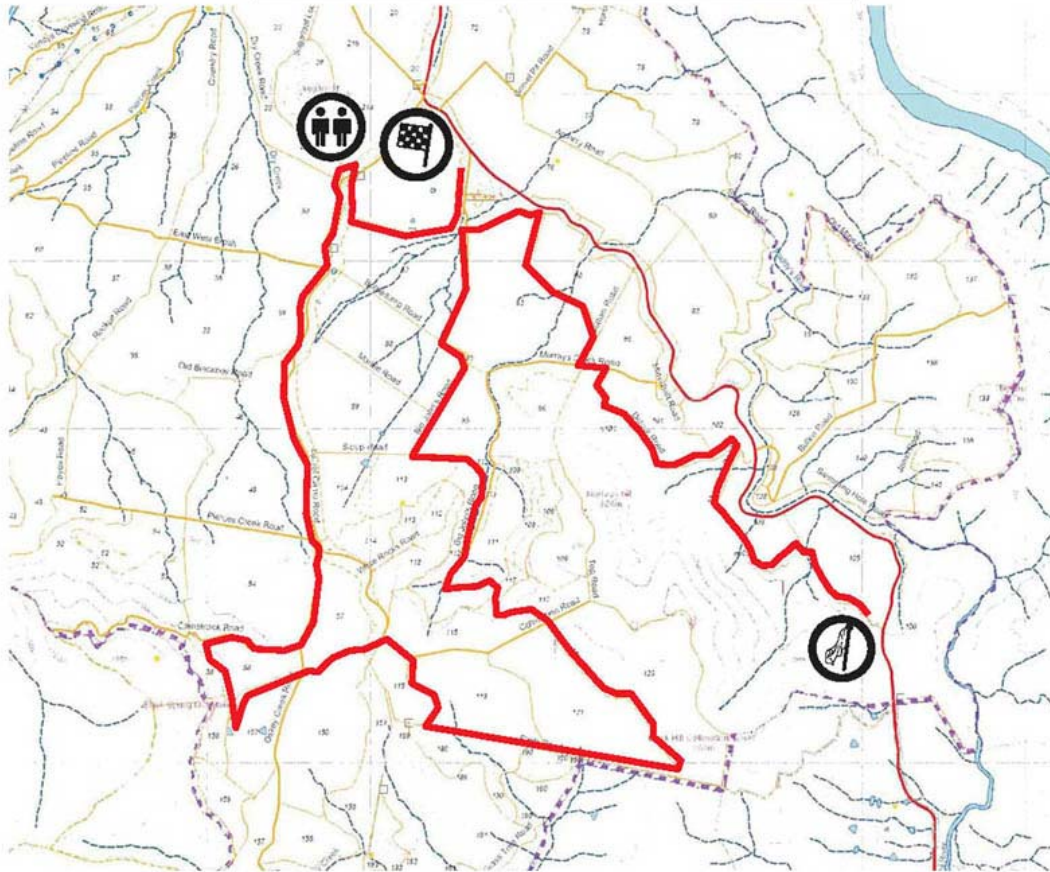
'05 Truss Me National Capital Rally

SS 3, 6 Dead Horse Gap



'05 Truss Me National Capital Rally

SS 4, 7 Mineshaft Reverse



'05 Truss Me National Capital Rally

SS 5, 8 West Knob

