

Road Transport (General) (Application of Road Transport Legislation) Declaration 2006 (No 10)

Disallowable instrument DI2006—247

made under the

Road Transport (General) Act 1999, s13 (Power to exclude vehicles, persons or animals from road transport legislation)

1 Name of instrument

This instrument is the *Road Transport (General) (Application of Road Transport Legislation) Declaration 2006 (No 10)*

2 Commencement

This instrument commences on 24 November 2006.

3 Declaration

I declare that the road transport legislation does not apply to the ACT roads or road related areas used or impinged on by any competing vehicle participating in the Media Day event on Friday 24 November 2006 and in a special stage of the Brindabella Motor Sport Club National Capital Rally Stages on 25 November 2006.

This declaration has effect during the competitive special stages of the event and the Media Day event.

Indicative start times and start control close times for vehicles participating in each competitive special stage of the event are set out in the attached Event Itinerary.

This declaration expires on 27 November 2006.

For this declaration, the following definitions apply:

Competing vehicle means:

Any vehicle used for participating in a special stage of the event or during the Media Day event.

Event means:

The Brindabella Motor Sport Club National Capital Rally Stages on 25 November 2006 and the Media Day event on 24 November 2006.

Special stage means:

The period from the time when an event official declares a special stage active for rally competition until the time when an event official declares course control for that special stage closed.

The competitive routes for the following special stages shown on the attached maps:

- Special stage 1 – Arboretum I (Greenhills),
- Special stage 2 – Blewitts;
- Special stage 3 – Black Springs Mountain (Oakey Creek);
- Special stage 4 – Blackboys I (Oakey Creek)
- Special stage 5 – One Stick I (Pierces),
- Special stage 6 – Black Spring (Oakey Creek),
- Special Stage 7 – Blackboys II (Oakey Creek),
- Special Stage 8 – One Stick II (Pierces), and
- Special Stage 9 – Arboretum II.

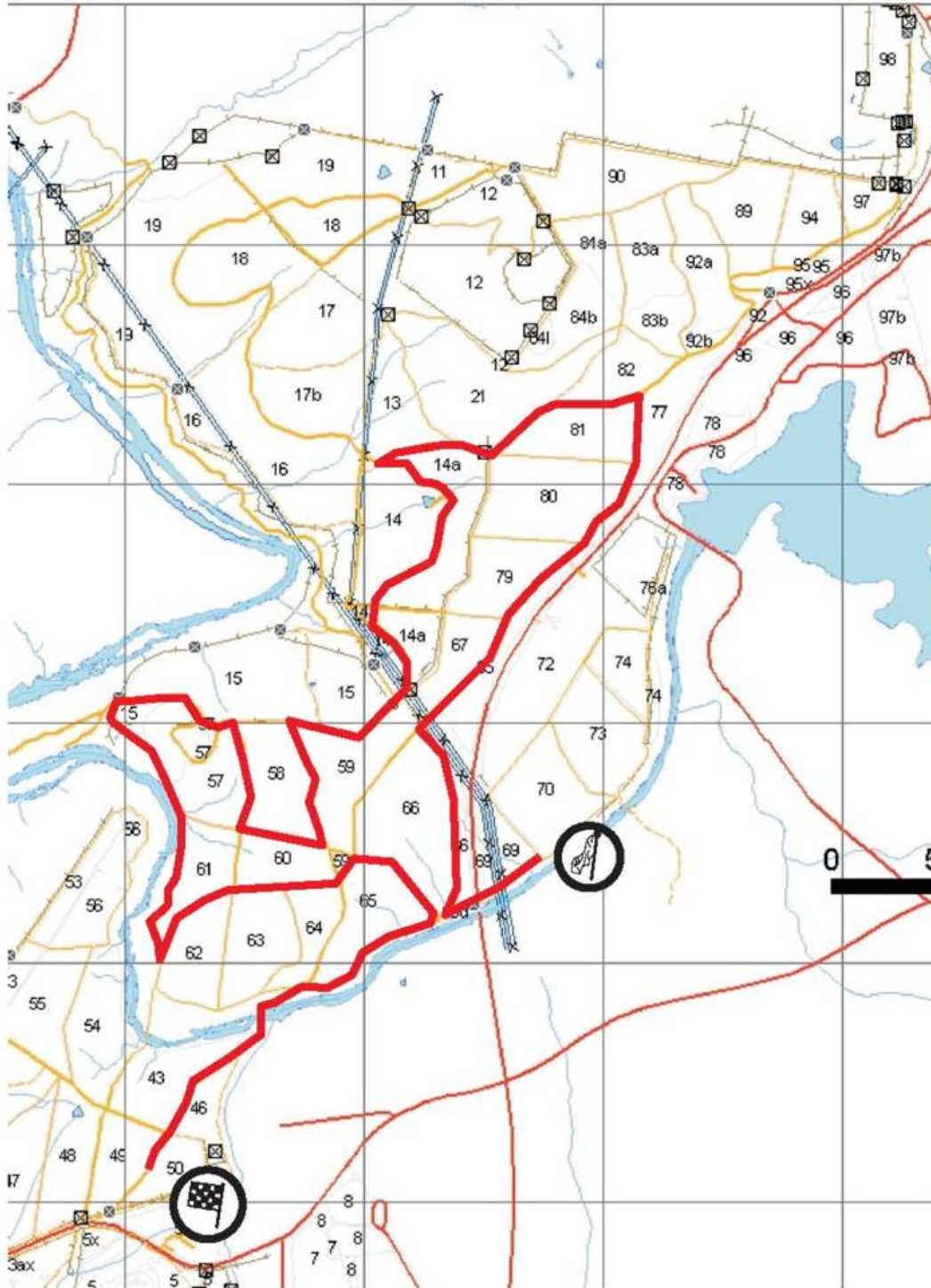
The Media Day event stage is shown on the attached map.

- Media Day – Hyles Block

John Hargreaves
Minister for Territory & Municipal Services
21 November 2006

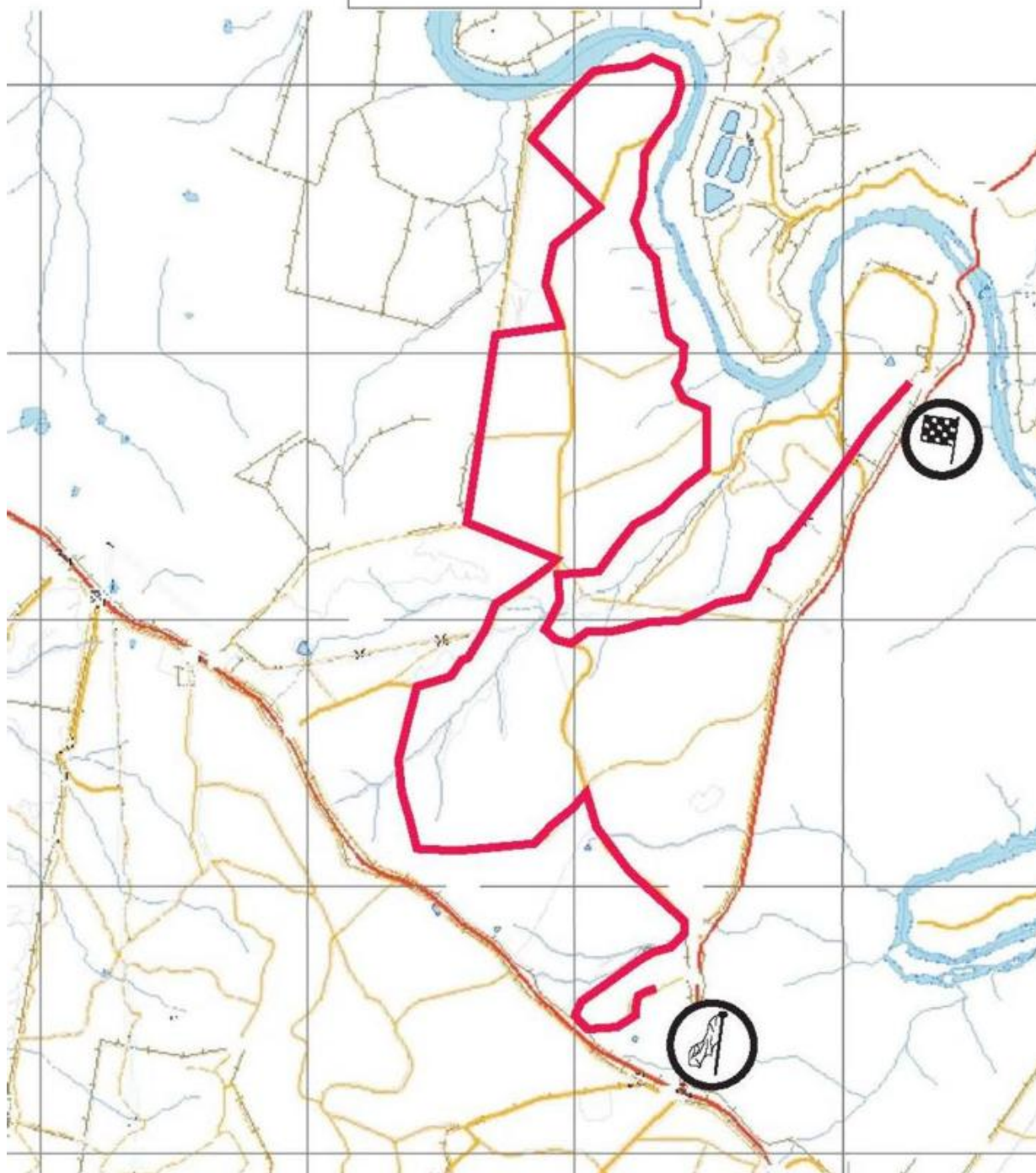
'06 Truss Me National Capital Rally

SS 1, 9 Arboretum



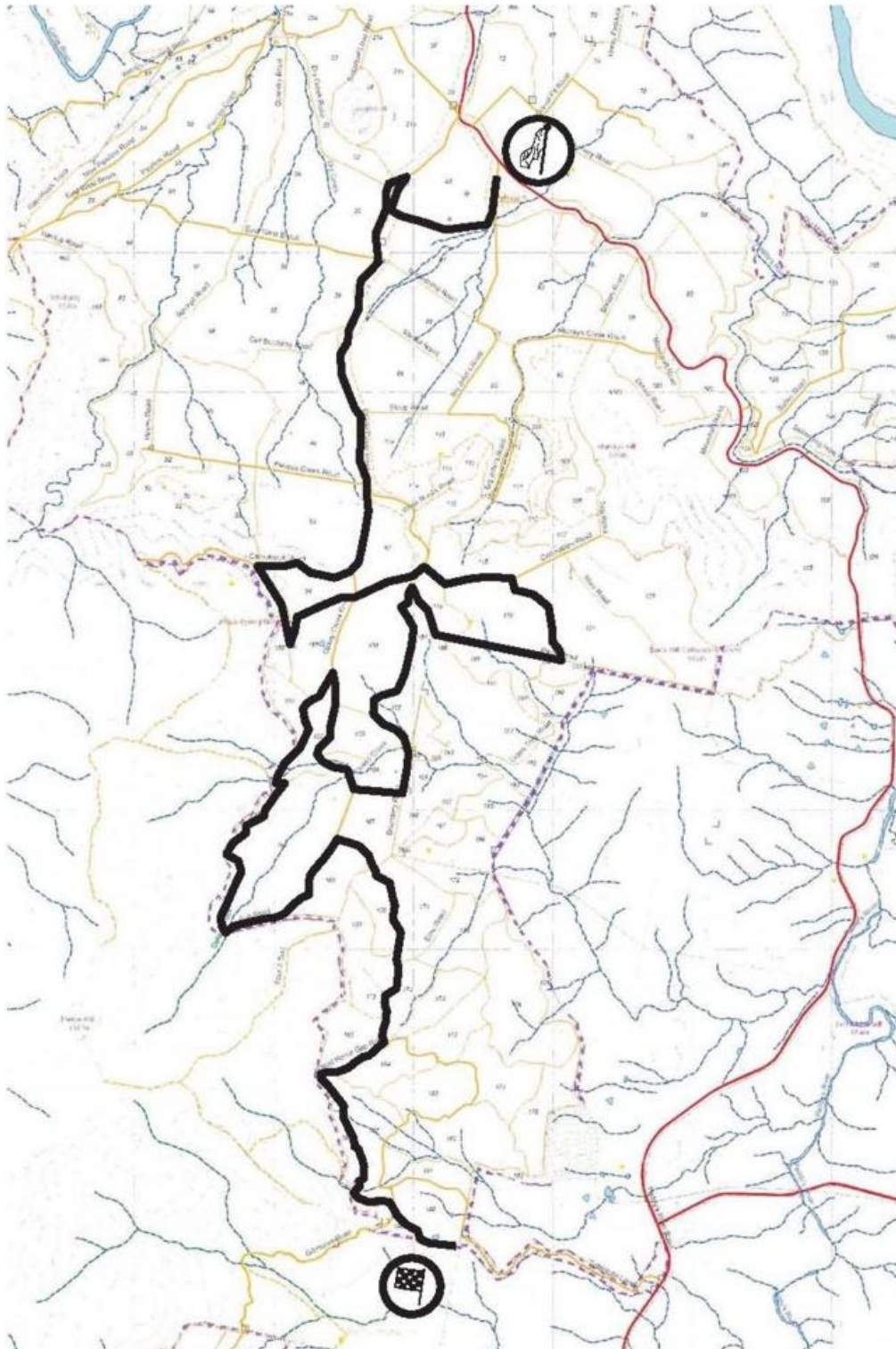
'06 National Capital Rally

SS 2 Blewitts



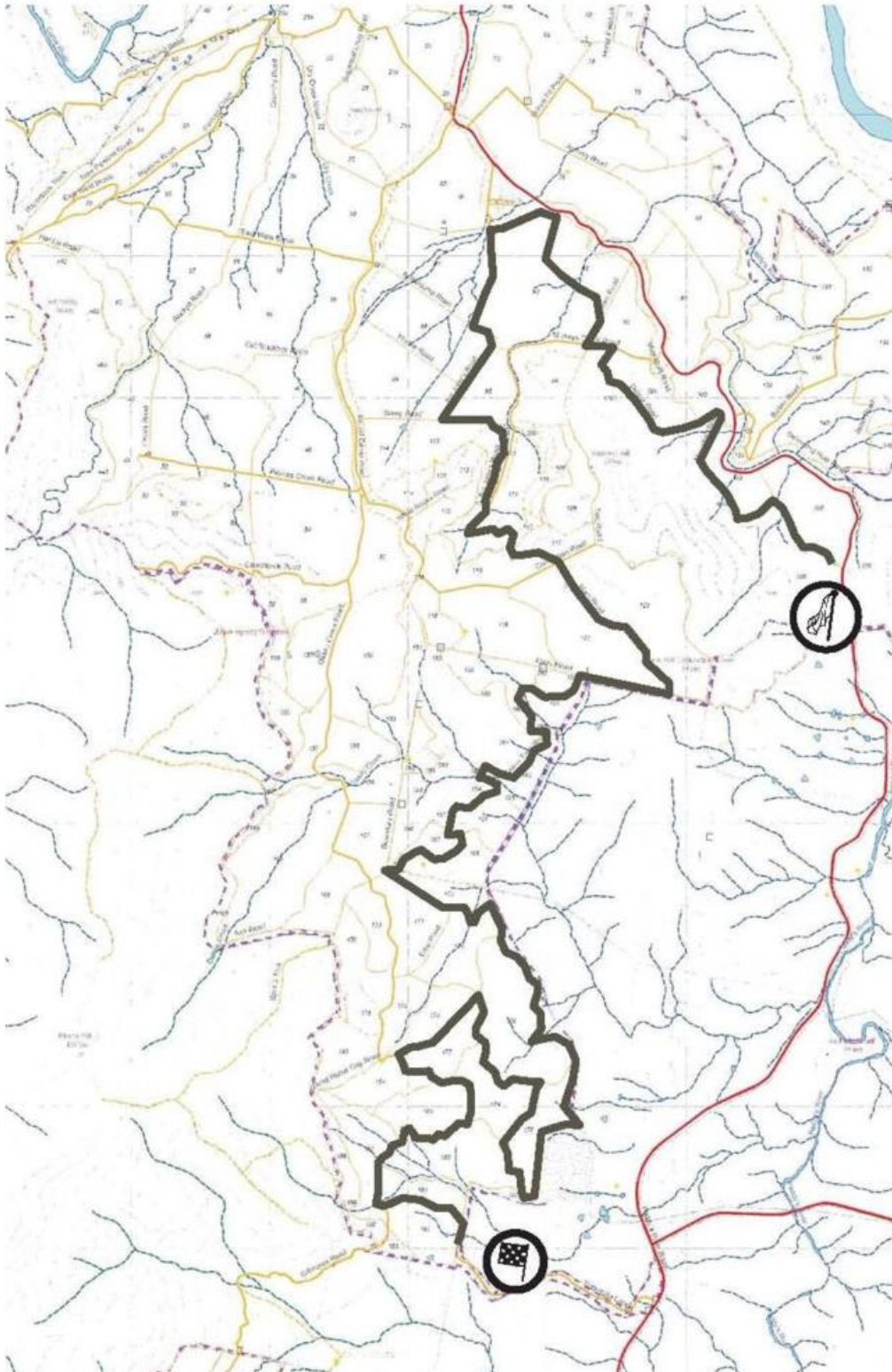
'06 Truss Me National Capital Rally

SS 3 Black Springs Mountain



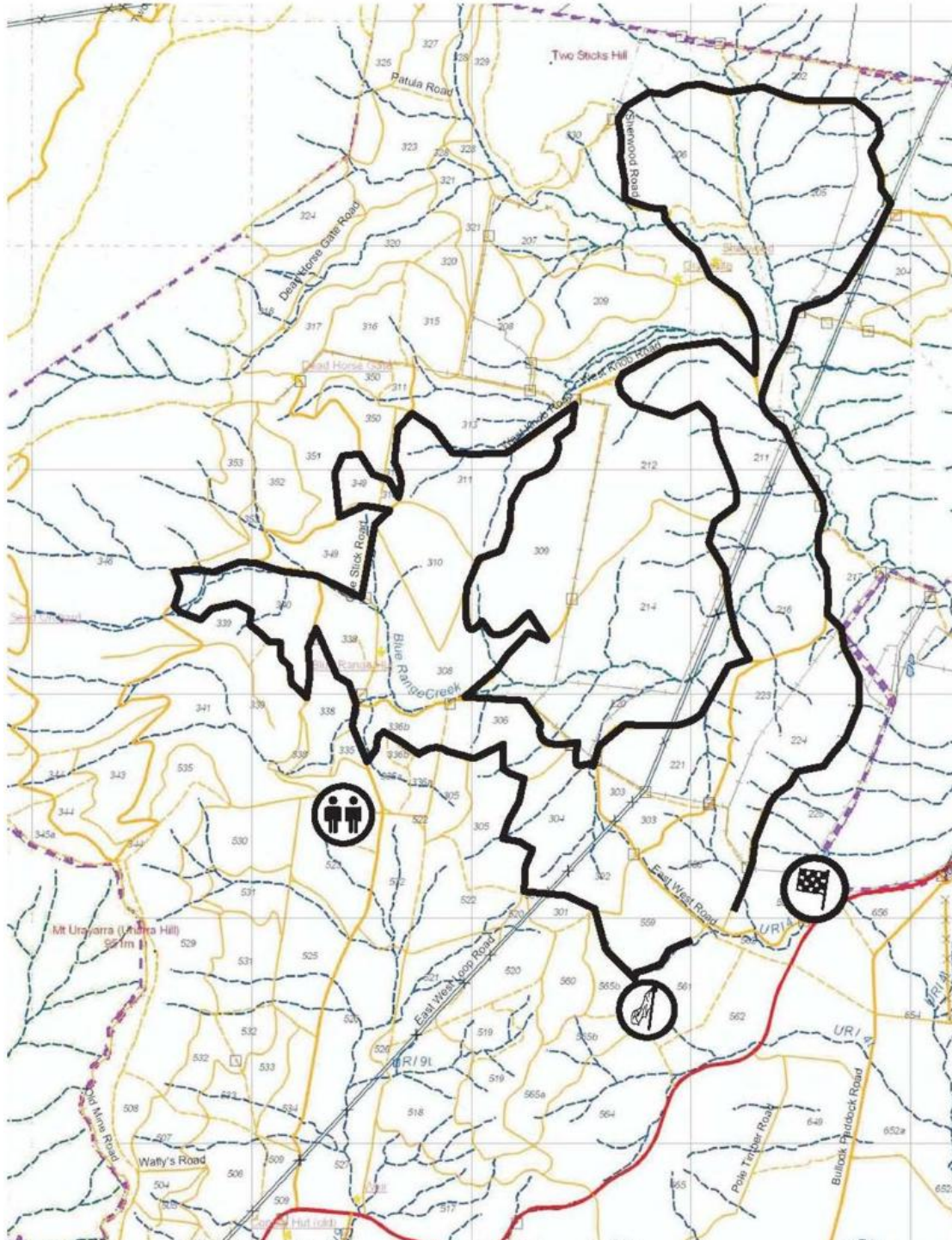
'06 Truss Me National Capital Rally

SS 4 & 7 Black Boys



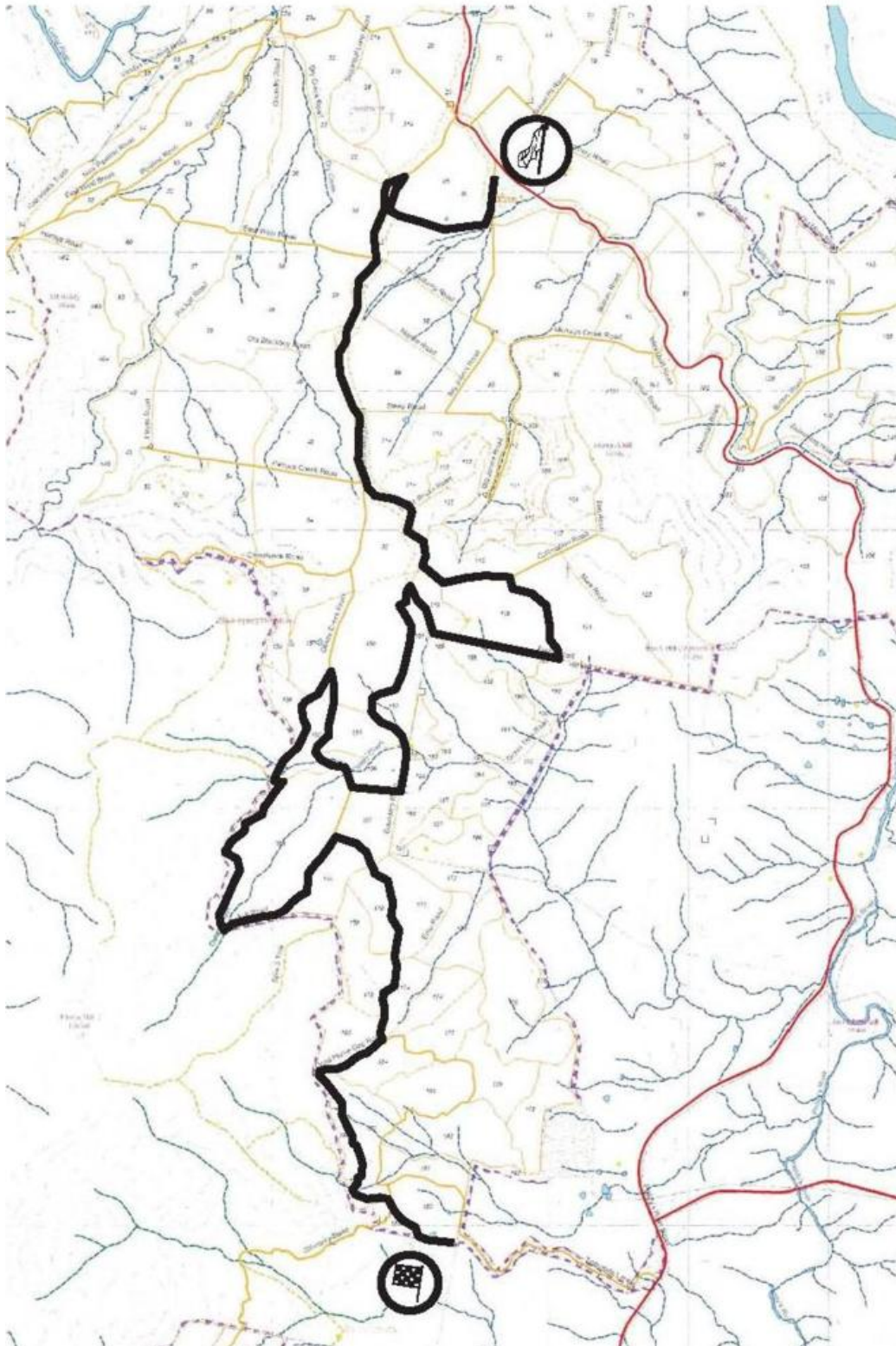
'06 National Capital Rally

SS 5, 8 One Stick



'06 Truss Me National Capital Rally

SS 6 Black Springs



Itinerary												
2006 NATIONAL CAPITAL RALLY'												
25/11/2006												
	Stage Name	Dist in Kms	Comp in Kms	Approx Service Time minutes	Time Allowed	Course Car	"000"	"00" closed to Stewards	"0"	Start Time Car 1	Start Time Car 64	Start Control Close
TC1.0	Liaison 1	2.88	0.00		0:25	10:30	10:45	11:00	11:15	11:30	13:38	13:58
TC1.0A	Liaison 2	27.10	0.00		0:15	10:58	11:13	11:28	11:43	11:58	14:06	14:26
TC1.1	Arboretum I SS 1	21.31	17.45		0:25	11:16	11:31	11:46	12:01	12:16	14:24	14:44
TC1.2	Blewitts SS 2	44.01	10.60	10.00	0:55	11:44	11:59	12:14	12:29	12:44	14:52	15:12
TC1.3	Black Spring Mtn SS 3	28.02	19.92		0:30	12:42	12:57	13:12	13:27	13:42	15:50	16:10
TC1.4	Blackboys I SS 4	50.93	23.13	10.00	1:00	13:15	13:30	13:45	14:00	14:15	16:23	16:43
TC1.5	One Stick I SS 5	26.31	21.96	30.00	0:55	14:18	14:33	14:48	15:03	15:18	17:26	17:46
TC1.5A	Regroup	maximum time	will be		0:20	15:16	15:31	15:46	16:01	16:16	18:24	18:44
TC1.5B	Liaison 3	10.38	0.00		0:12	15:39	15:54	16:09	16:24	16:39	18:47	19:07
TC1.6	Black Spring SS 6	26.23	18.13		0:25	15:54	16:09	16:24	16:39	16:54	19:02	19:22
TC1.7	Blackboys II SS 7	50.93	23.13	15.00	1:05	16:22	16:37	16:52	17:07	17:22	19:30	19:50
TC1.8	One Stick II SS 8	53.49	21.96		0:55	17:30	17:45	18:00	18:15	18:30	20:38	20:58
TC1.9	Arboretum II SS 9	20.71	17.45		0:22	18:28	18:43	18:58	19:13	19:28	21:36	21:56
TC1.10	Weston Finish					18:53	19:08	19:23	19:38	19:53	22:01	22:21
TOTAL KM		362.30	173.73									

'06 Truss Me National Capital Rally

Media day

