

Road Transport (General) (Application of Road Transport Legislation) Declaration 2008 (No 5)

Disallowable instrument DI2008—69

made under the

Road Transport (General) Act 1999, s13 (Power to exclude vehicles, persons or animals from road transport legislation)

1 Name of instrument

This instrument is the *Road Transport (General) (Application of Road Transport Legislation) Declaration 2008 (No 5)*

2 Commencement

This instrument commences on 5 May 2008.

3 Declaration

I declare that the road transport legislation does not apply to the ACT roads or road related areas used or impinged on by any competing vehicle participating in a special stage of:

- a) the 2008 Rally of Canberra Testing Sessions from 5 May 2008 to 12 May 2008;
- b) the 2008 Rally of Canberra Media Day on 9 May 2008; and
- c) the 2008 Rally of Canberra from 10 May 2008 to 11 May 2008.

This declaration has effect during the special stages of the event.

Indicative start times and start control close times for vehicles participating in each competitive special stage of the event are set out in the attached Event Itinerary and Schedule of Activities.

This declaration expires on 13 May 2008.

For this declaration, the following definitions apply:

Competing vehicle means:

Any vehicle used for participating in a special stage of the event.

Event means:

2008 Rally of Canberra from 5 May 2008 to 12 May 2008.

Special stage means:

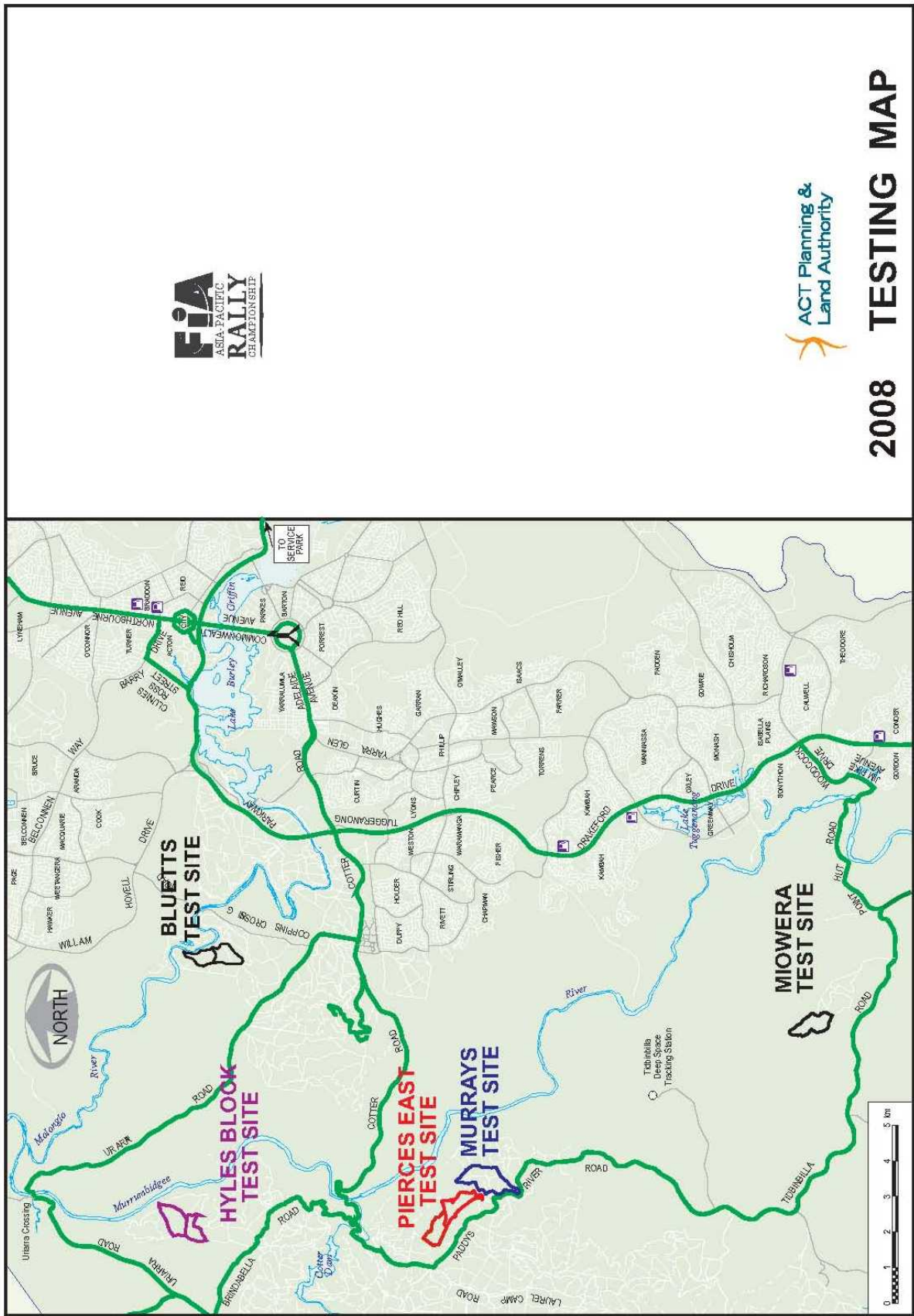
The period from the time when an event official declares a special stage active for the testing sessions, media day and rally competition until the time when an event official declares course control for that special stage closed.

The special stages are shown on the attached maps:

- Special Stage –Testing Sessions
- Special Stage – Media Day;
- Special Stage 1 – Tidbinbilla 1;
- Special Stage 2 – Paddys 1;
- Special Stage 3 – Uriarra 1;
- Special Stage 4 – Jacks House 1;
- Special Stage 5 – Old Depot 1;
- Special Stage 6 – The Gorge 1;
- Special Stage 7 – Fearnside 1;
- Special Stage 8 – Jacks House 2;
- Special Stage 9 – Old Depot 2;
- Special Stage 10 – Tidbinbilla 2;
- Special Stage 11 – Paddys 2;
- Special Stage 12 – Uriarra 2;
- Special Stage 13 – Jacks House 3;
- Special Stage 14 – Old Depot 3;
- Special Stage 15 – The Gorge 2;

- Special Stage 16 – Fearnside 2; and
- Special Stage 17 – Jacks House 4; and
- Special Stage 18 – Old Depot 4.

John Hargreaves
Minister for Territory & Municipal Services
1 May 2008

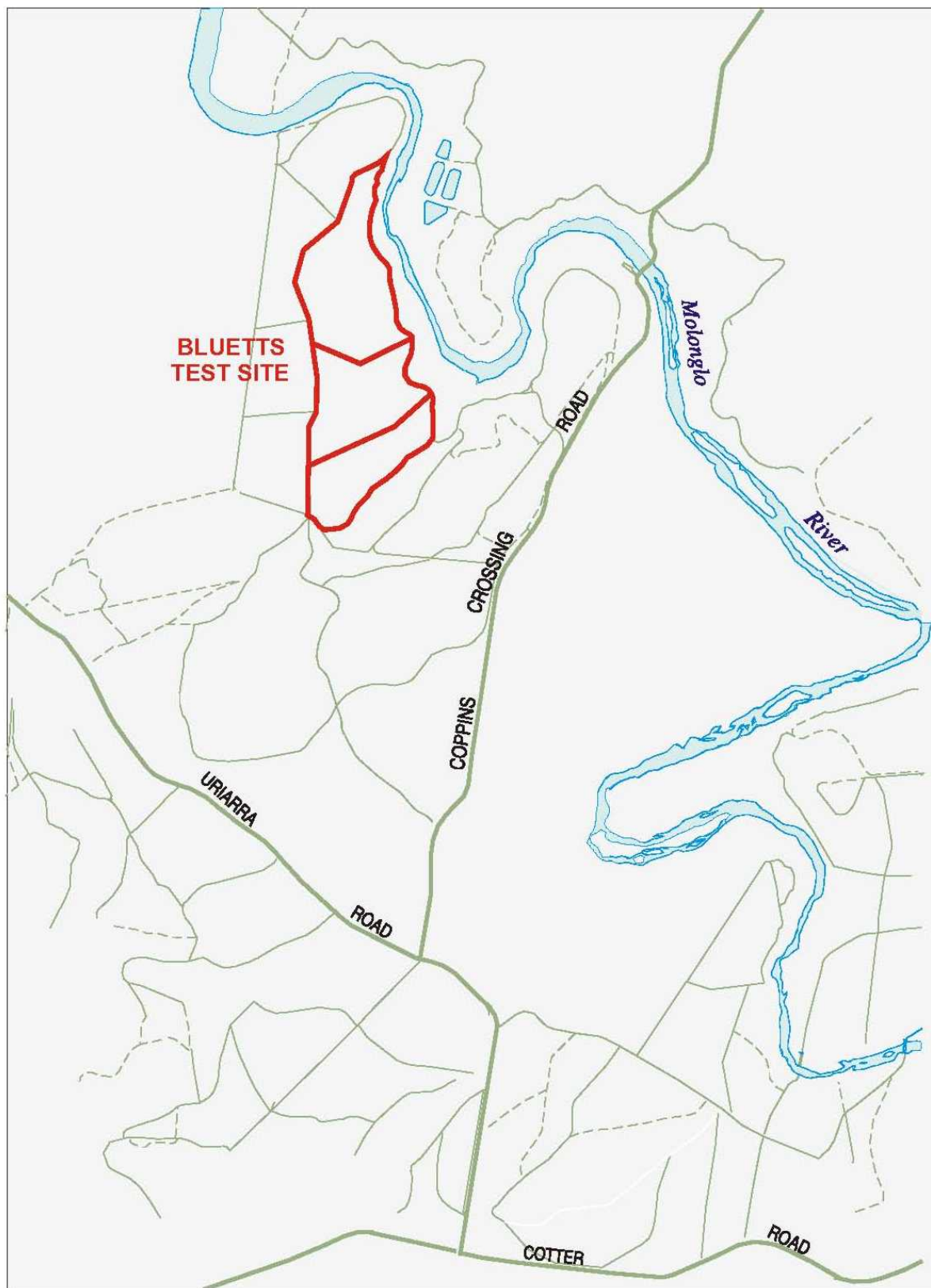


FIA
RALLY
ASIA-PACIFIC
CHAMPIONSHIP

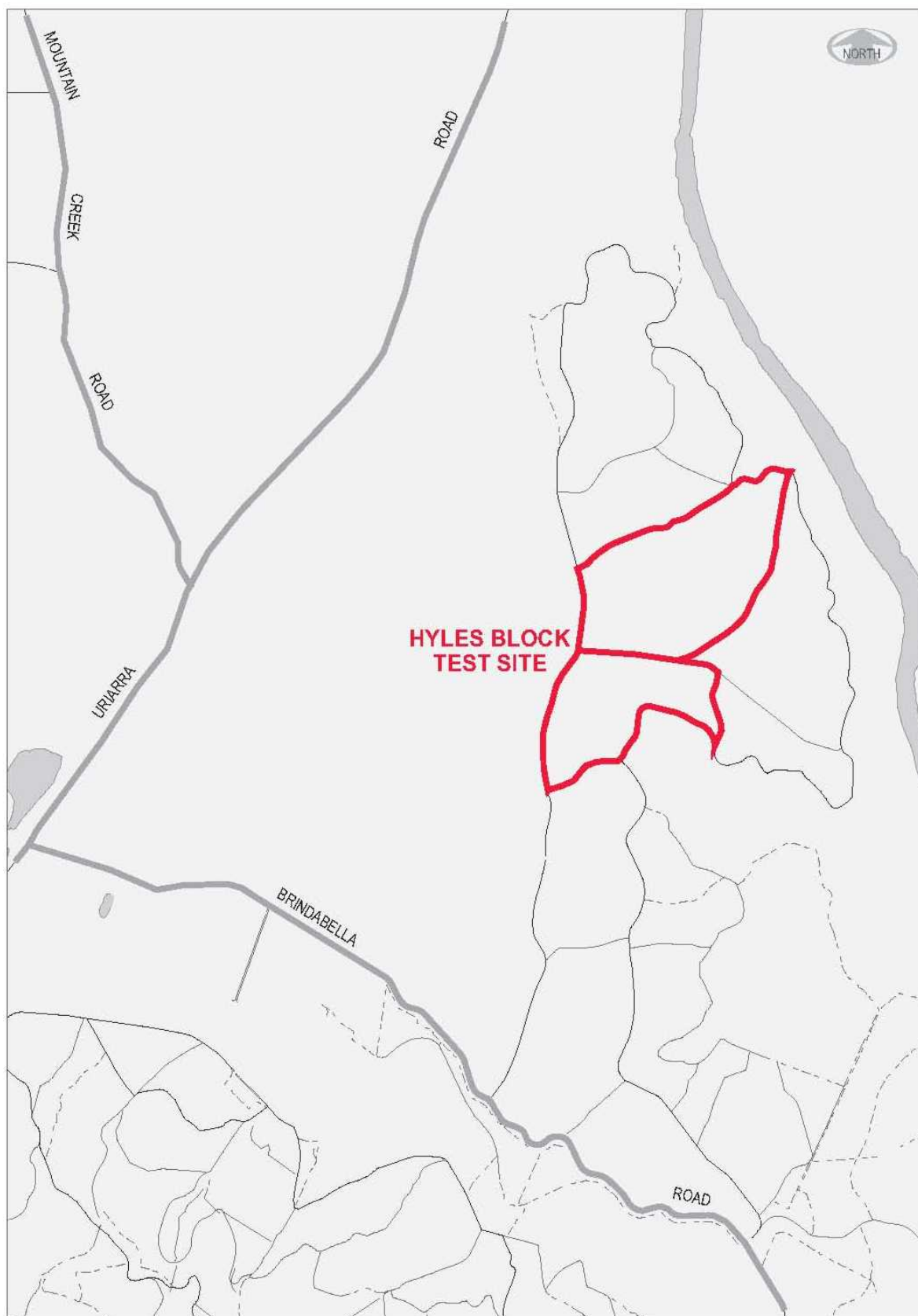
**ACT Planning &
Land Authority**

2008 TESTING MAP

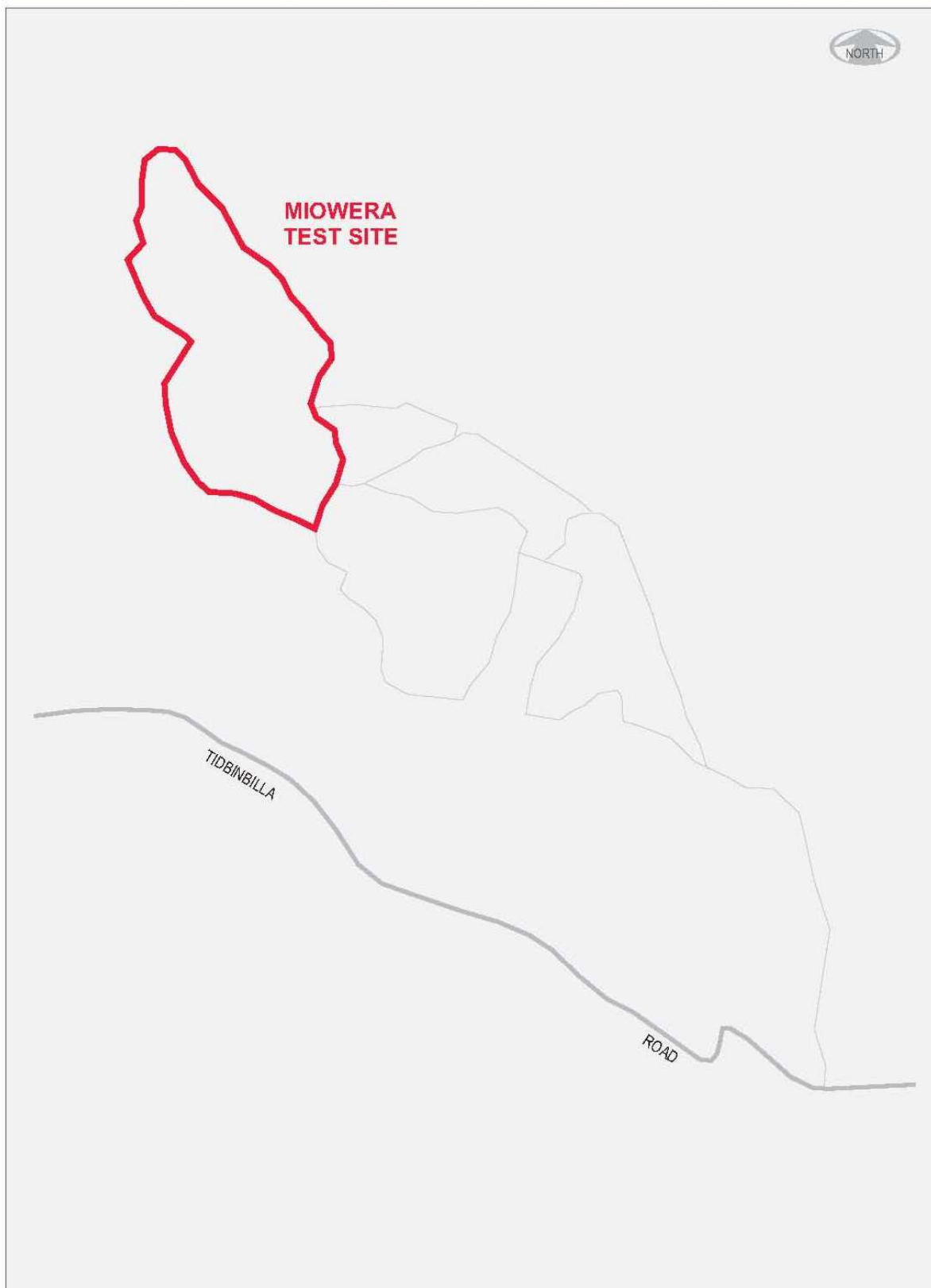
BLUETTS TEST SITE FOR 2008 RALLY OF CANBERRA



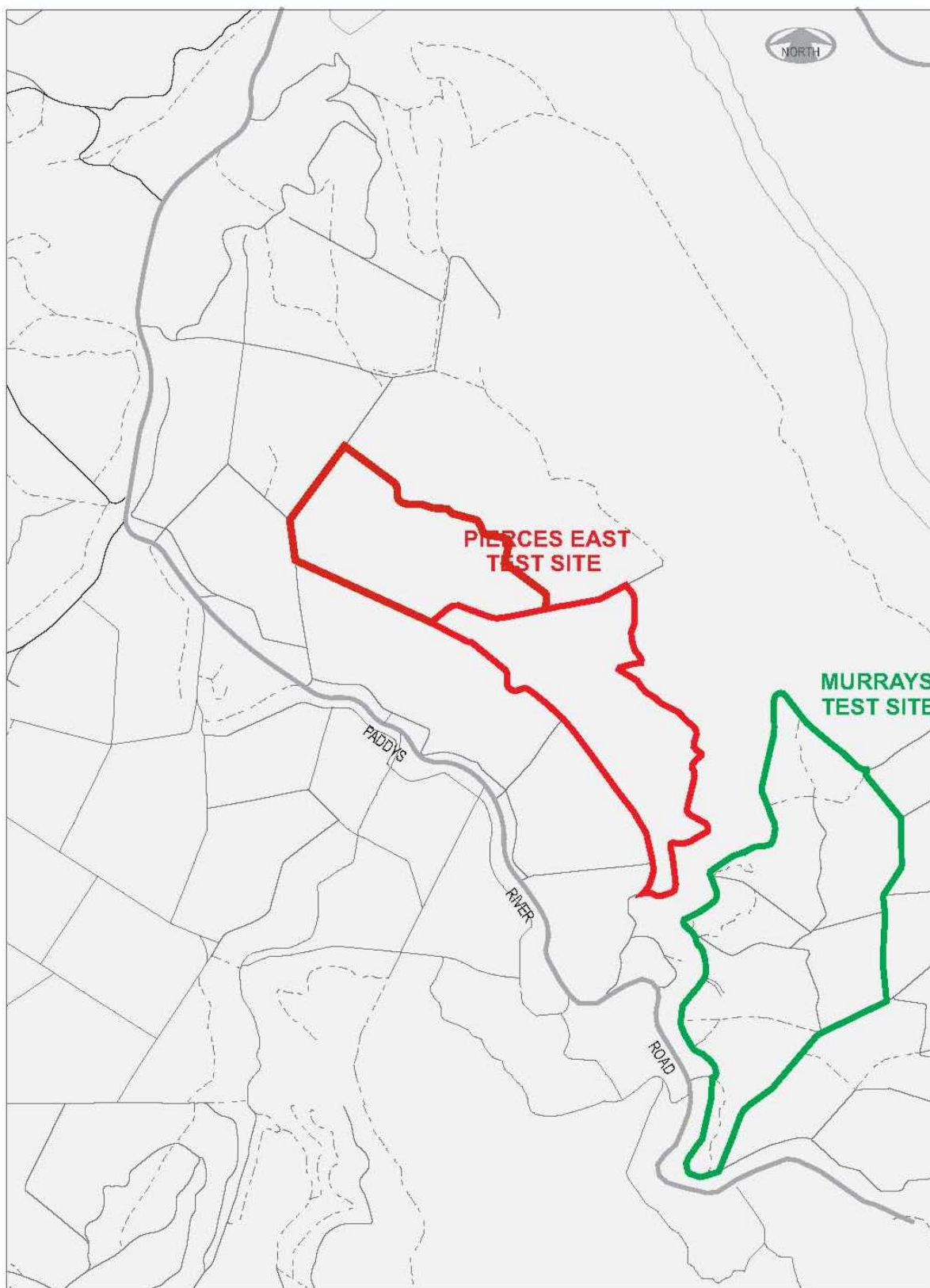
HYLES BLOCK TEST SITE FOR 2008 RALLY OF CANBERRA



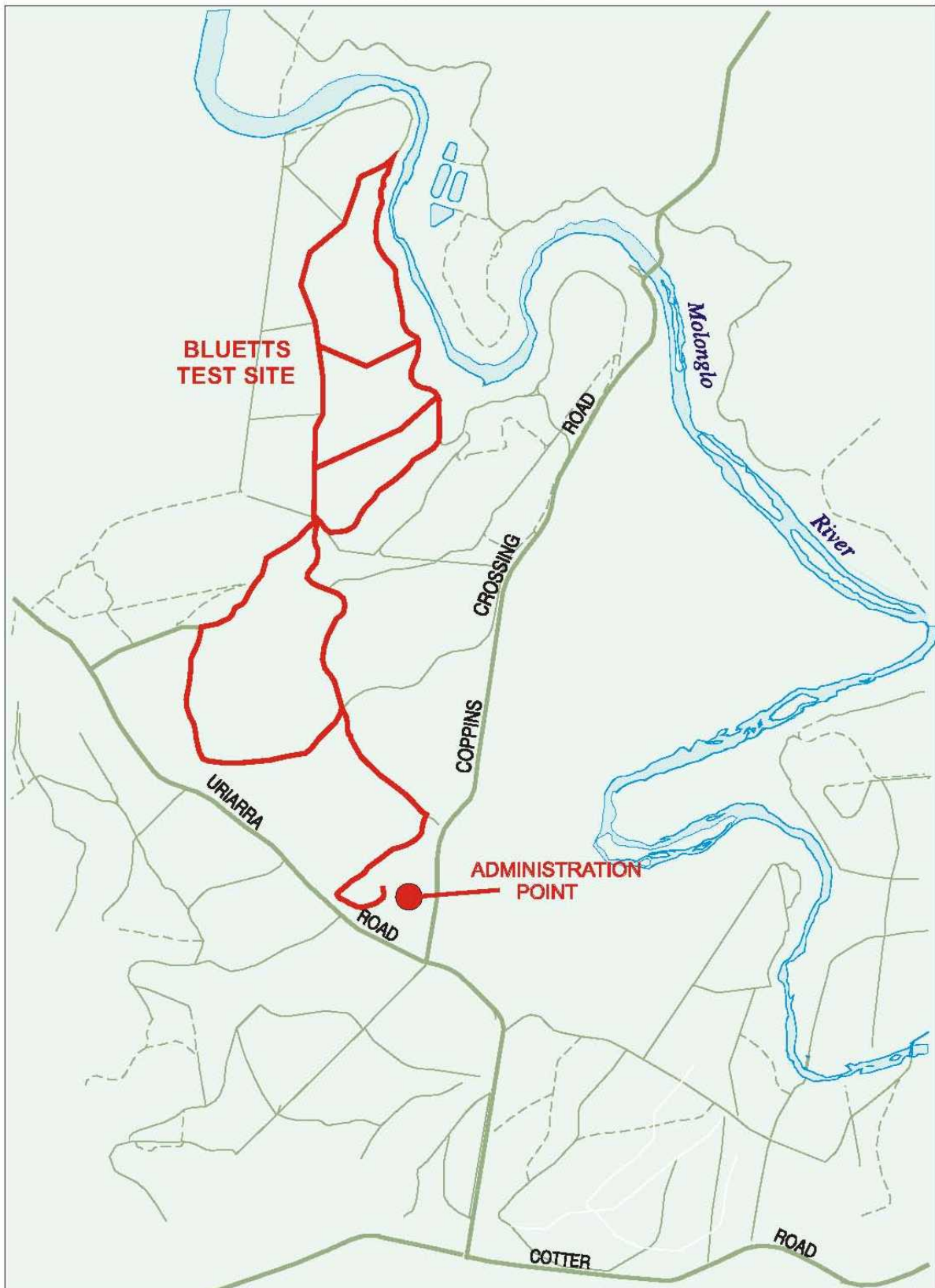
MIOWERA TEST SITE FOR 2008 RALLY OF CANBERRA



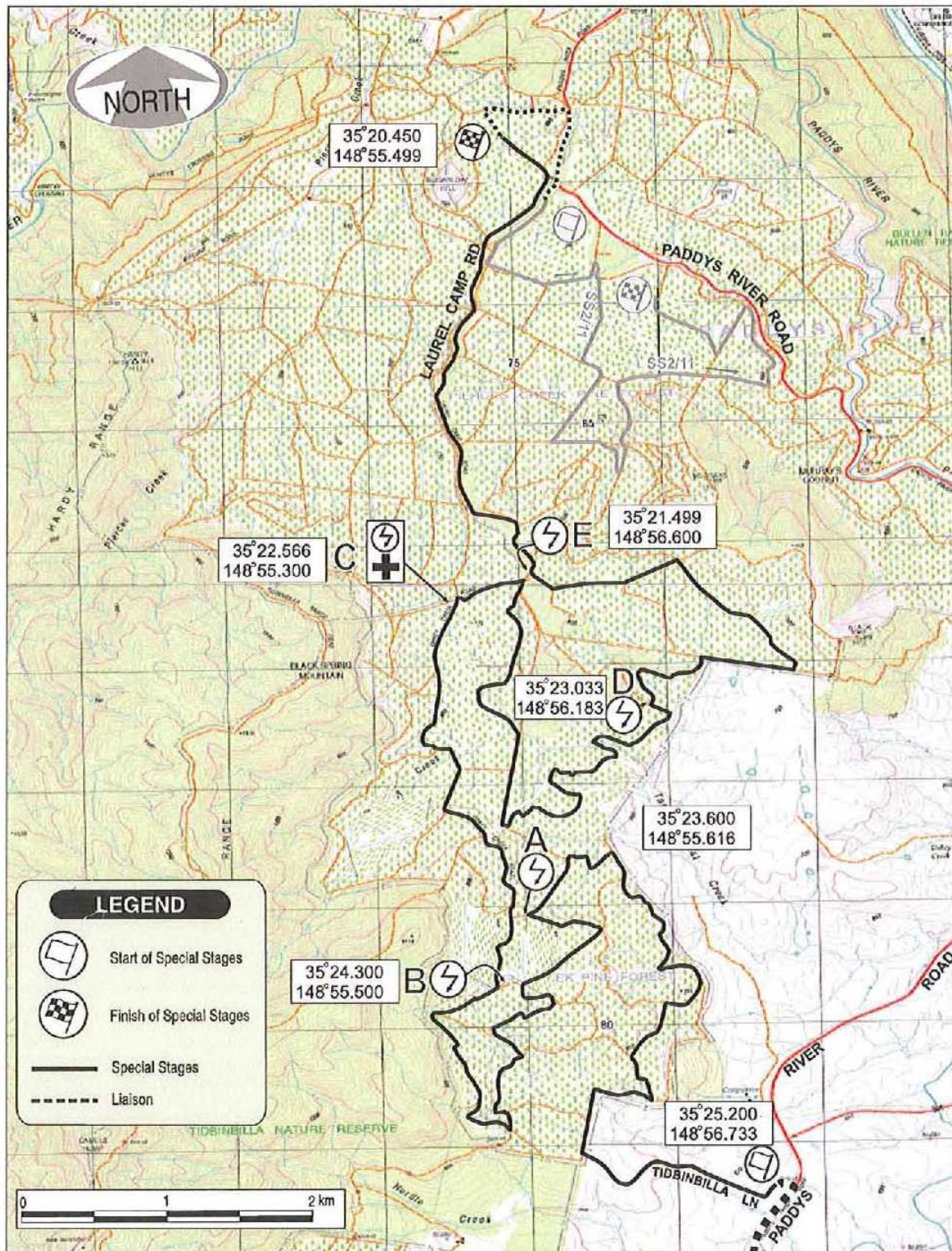
PIERCES EAST TEST SITE FOR 2008 RALLY OF CANBERRA



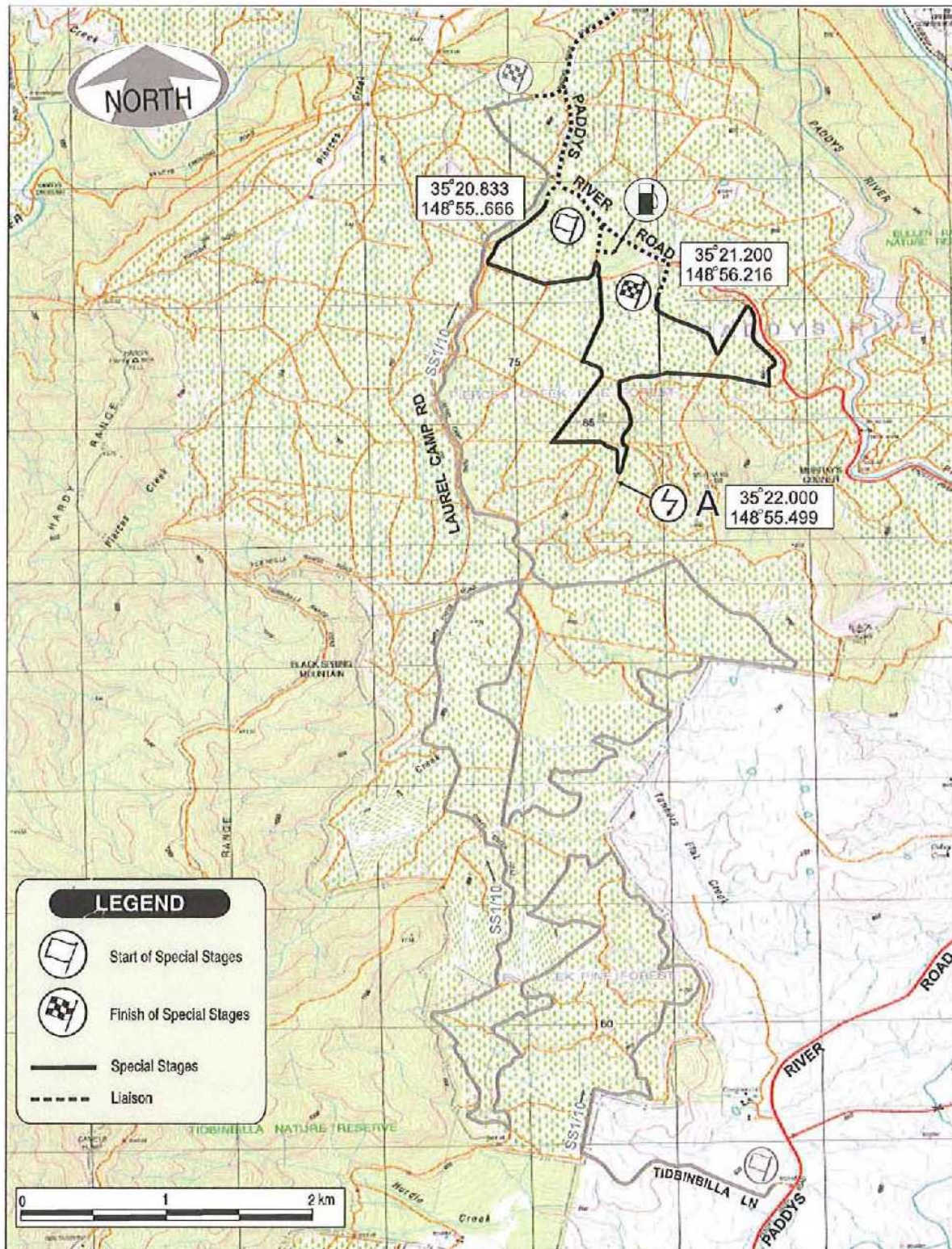
MEDIA DAY



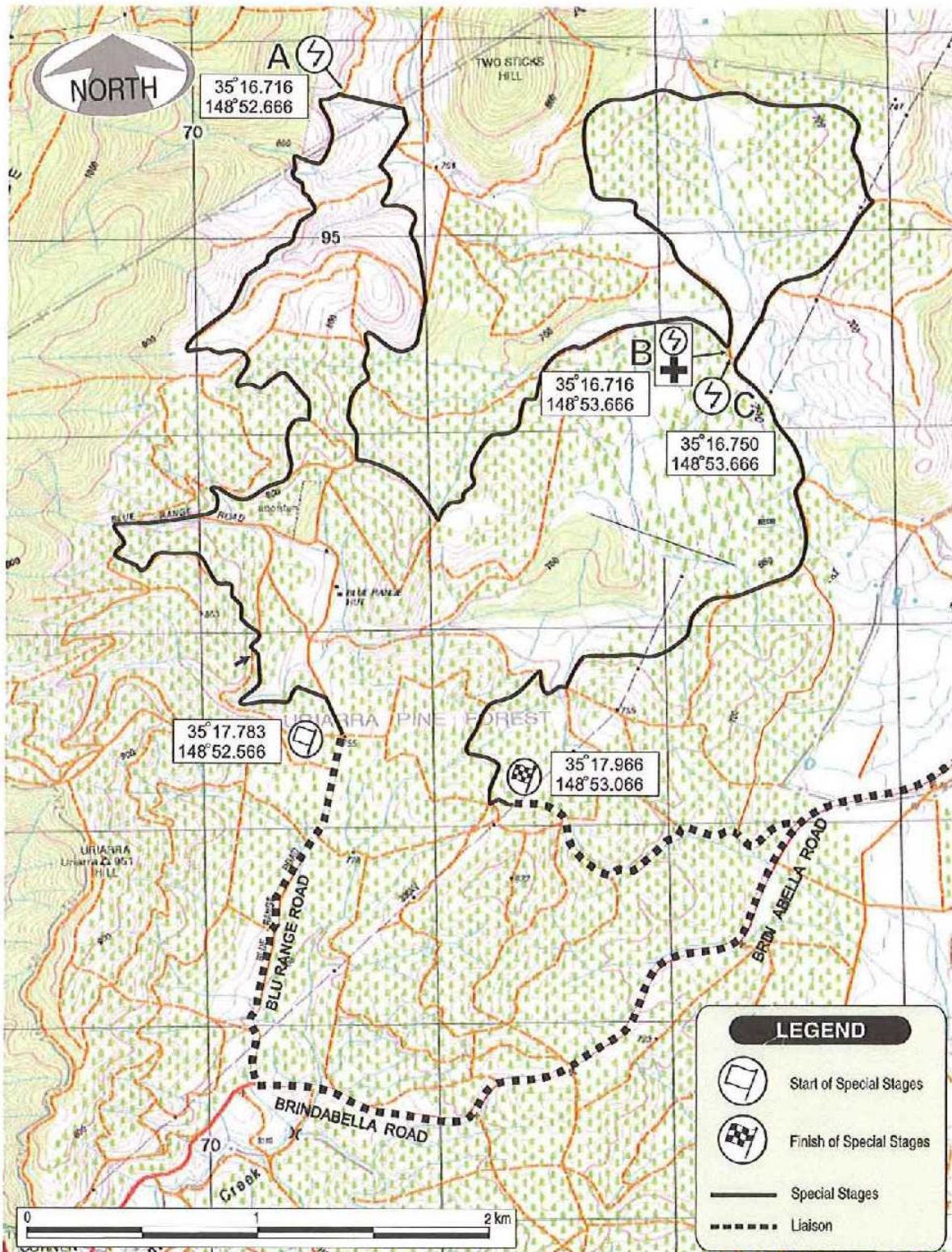
SS 1 & 10 - TIDBINBILLA



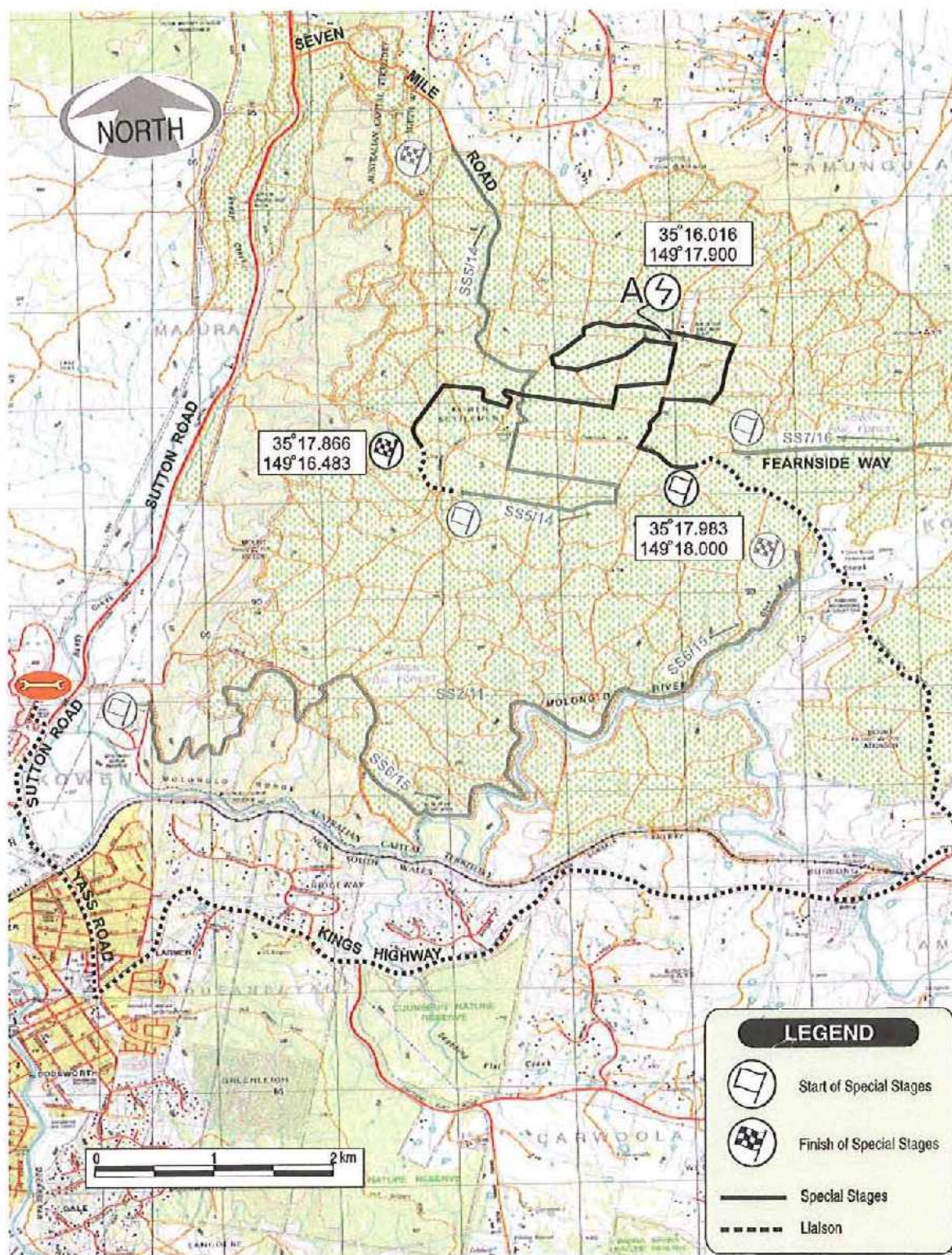
SS 2 & 11 - PADDYS



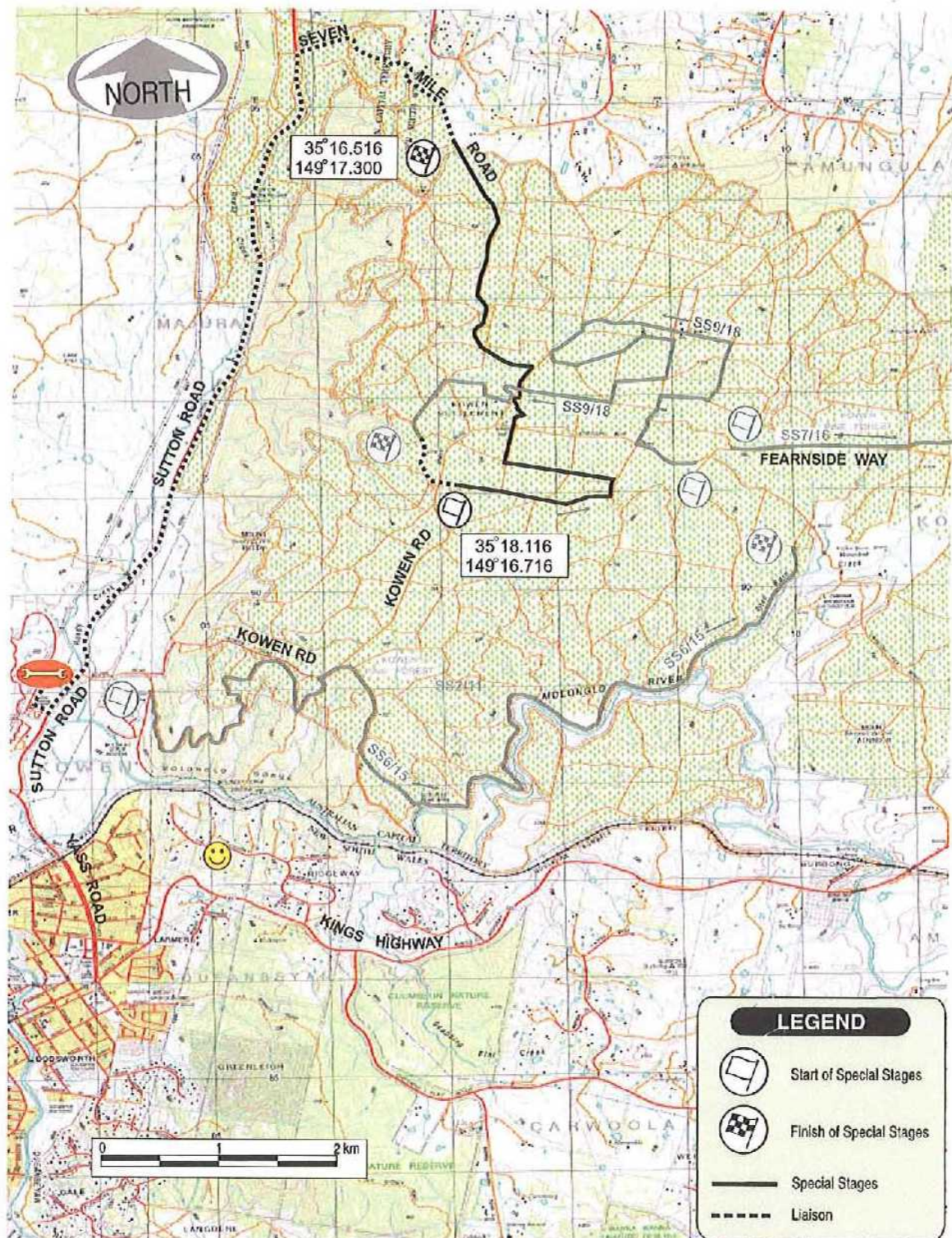
SS 3 & 12 - URIARRA



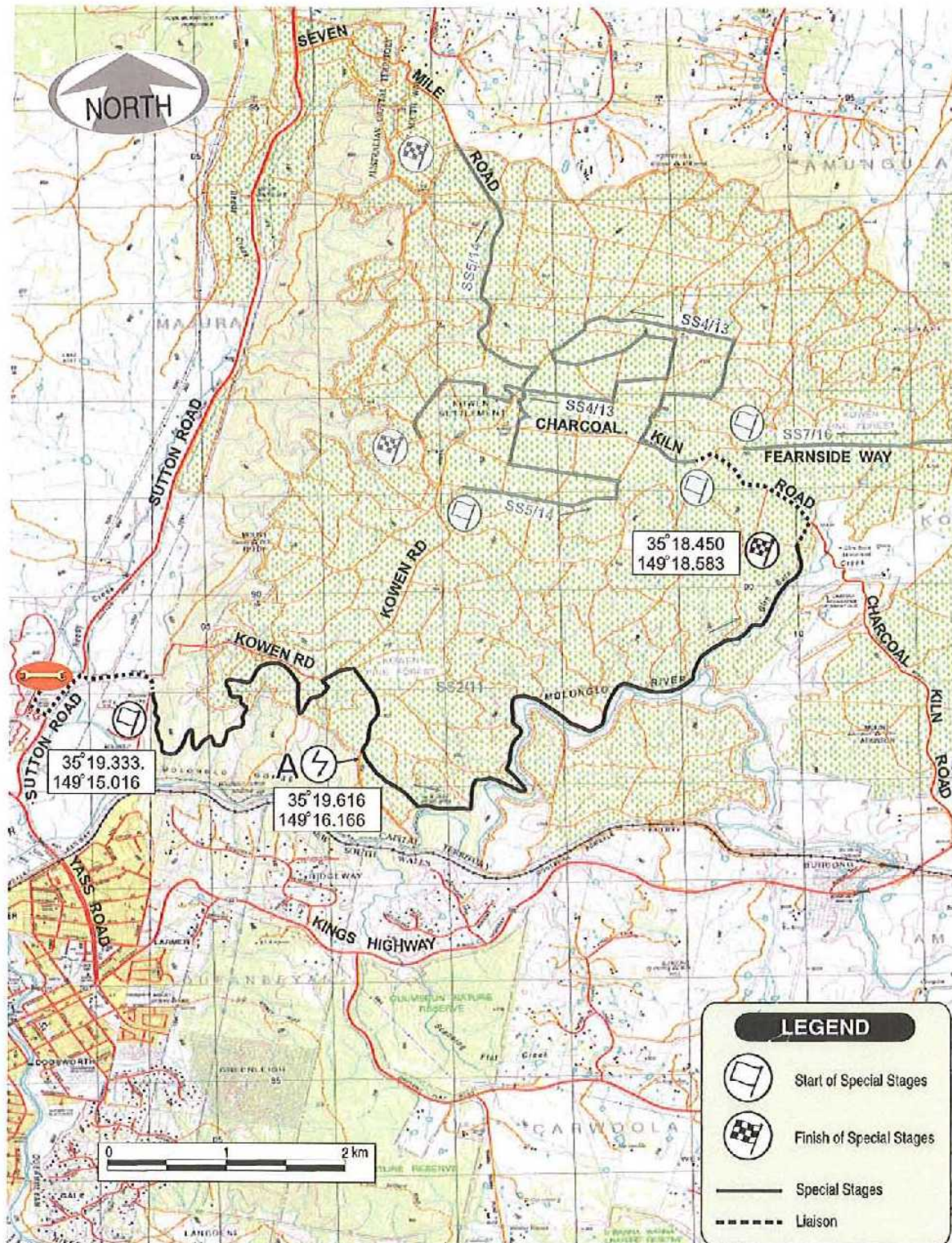
SS 4 & 13 - JACKS HOUSE



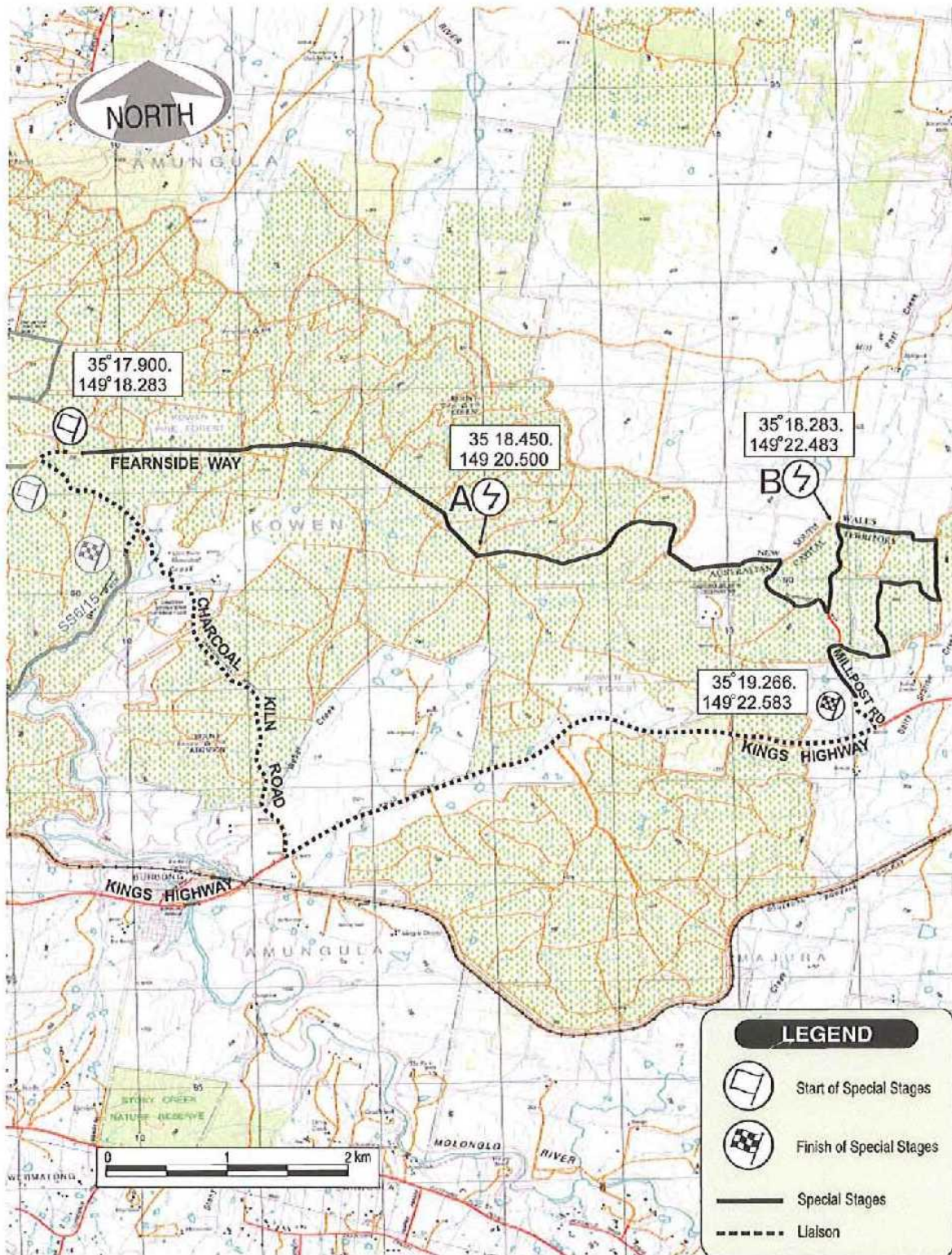
SS 5, 9, 14 & 18 - OLD DEPOT



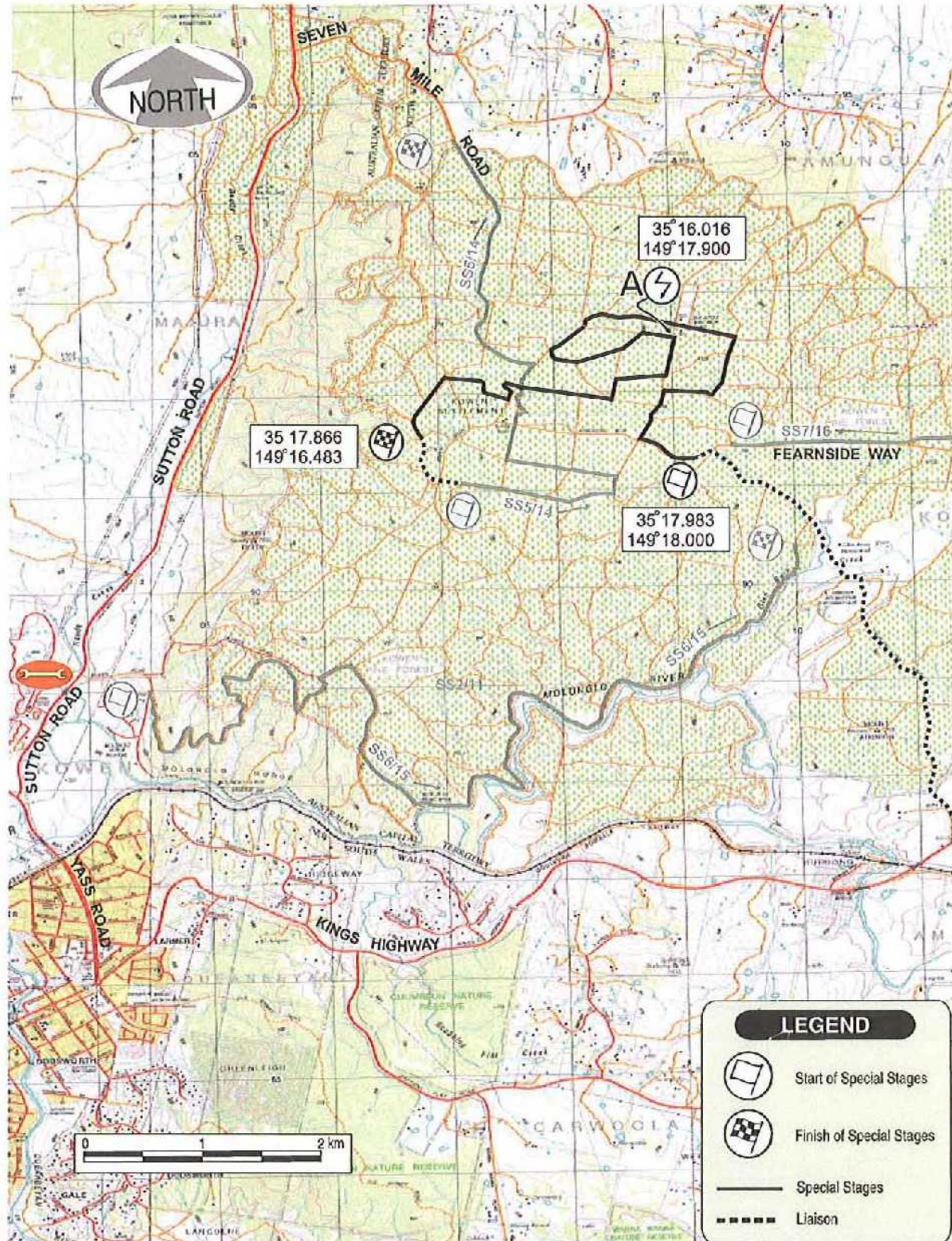
SS 6 & 15 - THE GORGE



SS 7 & 16 - FEARNSIDE



SS 8 & 17 - JACKS HOUSE



APRC RALLY OF CANBERRA
DAY ONE – 10 MAY 2008



TC SS	Location	SS Dist	Liaison Dist	Total	Target Time	1 st APRC Car Due
Section 1						
0	Rally Start					0730
1	Tidbinbilla Lane		44.73	44.73	40	0810
SS1	Tidbinbilla 1	28.83				0813
2	Laurel Camp Road		1.74	30.57	40	0853
SS2	Paddys 1	8.25				0856
Supplementary Refuel		SR 1	1.11	9.36		
		(37.08)	(47.58)	(84.66)		
3	Blue Range Road		19.02	27.27	47	0943
SS3	Uriarra 1	19.10				0946
3A	Flexi Service A In		49.65	68.75	75	1101
Flexi Service A (Driver Training)		56.18	115.14	171.32	20	
3B	Service A Exit/Regroup In					1121
Regroup (Driver Training)					45	
Section 2						
3C	Regroup Exit	RZ 1				1206
4	Charcoal Kiln Road		17.36	17.36	31	1237
SS4	Jacks House 1	8.34				1240
5	Unnamed Road		0.65	8.99	15	1255
SS5	Old Depot 1	6.35				1258
5A	Regroup In		9.49	15.84	20	1318
Regroup (Driver Training)					20	
Section 3						
5B	Regroup Exit	RZ 2	(14.69)	(27.50)	(42.19)	1338
6	Unnamed Road		1.58	1.58	14	1352
SS6	The Gorge 1	11.87				1355
7	Feanside Way		1.58	13.45	18	1413
SS7	Feanside 1	12.83				1416
8	Charcoal Kiln Road		11.10	23.93	37	1453
SS8	Jacks House 2	8.34				1456
9	Unnamed Road		0.65	8.99	15	1511
SS9	Old Depot 2	6.35				1514
9A	Flexi Service B In		9.49	15.84	21	1535
Flexi Service B (Driver Training)		54.08	51.90	105.98	45	
9B	Service B Exit/Driver Training Parc Ferme In					E
Latest Time into Parc Ferme						2000
Day Totals		110.26	167.04	277.30		
RZ = Refuel Zone SR = Supplementary Refuel E = Early Check In permitted						

APRC RALLY OF CANBERRA
DAY TWO – 11 MAY 2008

TC SS	Location	SS Dist	Liaison Dist	Total	Target Time	1 st APRC Car Due
Section 4						
9C	Driver Training Parc Ferme Out/Service C In					0600
	Flexi Service C (Driver Training)	0.00	0.00	0.00	20	
9D	Service C Exit/Regroup In					0620
	Regroup				40	
Section 5						
9E	Regroup Exit	RZ 3				0700
10	Tidbinbilla Lane		44.73	44.73	50	0750
SS10	Tidbinbilla 2	28.83				0753
11	Laurel Camp Road		1.74	30.57	40	0833
SS11	Paddys 2	8.25				0836
	Supplementary Refuel	SR 2	1.11	9.36		
		(37.08)	(47.58)	(84.66)		
12	Blue Range Road		19.02	27.27	47	0923
SS12	Uriarra 2	19.10				0926
12A	Flexi Service D In		49.65	68.75	75	1041
	Flexi Service D (Driver Training)	56.18	115.14	171.32	20	
12B	Service D Exit/Regroup In					1101
	Regroup				45	
Section 6						
12C	Regroup Exit	RZ 4				1146
13	Charcoal Kiln Road		17.36	17.36	31	1217
SS13	Jacks House 3	8.34				1220
14	Unnamed Road		0.65	8.99	15	1235
SS14	Old Depot 3	6.35				1238
14A	Regroup In		9.49	15.84	20	1258
	Regroup				20	
Section 7						
14B	Regroup Exit	RZ 5	(14.69)	(27.50)	(42.19)	1318
15	Unnamed Road		1.58	1.58	14	1332
SS15	The Gorge 2	11.87				1335
16	Fearnside Way		1.58	13.45	18	1353
SS16	Fearnside 2	12.83				1356
17	Charcoal Kiln Road		11.10	23.93	37	1433
SS17	Jacks House 4	8.34				1436
18	Unnamed Road		0.65	8.99	15	1451
SS18	Old Depot 4	6.35				1454
18A	Service E In		9.49	15.84	21	1515
	Service E	54.08	51.90	105.98	20	
18B	Service E Exit/Ceremonial Finish/End of Rally Parc Ferme In					1535 E
Day Totals		110.26	167.04	277.30		
RALLY TOTALS		220.52	334.08	554.60		

RZ = Refuel Zone
SR = Supplementary Refuel
E = Early Check In permitted

2008 RALLY OF CANBERRA SCHEDULE OF ACTIVITIES AND FOREST CLOSURES

Forest Area	Closed Date/Time	Opened Date/Time	Activity
Kowen Forest	Wednesday 23 April 2008 05:00am	Wednesday 23 April 2008 4:00pm	Event Launch and Sponsors Day: stage set up from 7.00am to pull commencing down around 2.00pm
Pierces Creek Forest	Monday 5 May 2008 00:01am	Monday 12 May 2008 11:59pm	Testing: all day each day on Monday 5 May, Tuesday 6 May, Wednesday 7 May and Monday 12 May (Pierces East, Murrays Corner, Mlowera)
			Reconnaissance: Thursday 8 May (and possibly Friday 9 May 2008)
			Competition: Saturday 10 & Sunday 11 May 2008
Uriarra Region	Monday 5 May 2008 00:01am	Monday 12 May 2008 11:59pm	Testing: all day each day on Monday 5 May, Tuesday 6 May, Wednesday 7 May and Monday 12 May (Hyles Block)
			Reconnaissance: Thursday 8 May (and possibly Friday 9 May 2008)
			Competition: Saturday 10 & Sunday 11 May 2008
Bluetts Forest	Monday 5 May 2008 00:01am	Monday 12 May 2008 11:59pm	Testing: all day each day on Monday 5 May, Tuesday 6 May, Wednesday 7 May and Monday 12 May (Bluetts Forest)
			Media Day: morning of Friday 9 May 2008
Kowen Forest	Monday 5 May 2008 00:01am	Monday 12 May 2008 11:59pm	Testing: Nil
			Reconnaissance: Thursday 8 May (and possibly Friday 9 May 2008)
			Competition: Saturday 10 Sunday 11 May 2008