

# Road Transport (General) (Application of Road Transport Legislation) Declaration 2009 (No 4)

Disallowable instrument DI2009—206

made under the

*Road Transport (General) Act 1999*, section 12 (Power to include or exclude areas in road transport legislation)

---

## 1 Name of instrument

This instrument is the *Road Transport (General) (Application of Road Transport Legislation) Declaration 2009 (No 4)*

## 2 Commencement

This instrument commences on 26 September 2009.

## 3 Declaration

I declare that the road transport legislation does not apply to a road or road related area that is a special stage of the 2009 Corsa de Mille Pini Rally.

## 4 Period of effect of declaration

The declaration has effect on 26 September 2009 in relation to a special stage of the event for any period beginning when an event official declares (however described) the stage active for a testing session, a media event or rally competition and ending when an event official declares (however described) the stage inactive for the event.

## 5 Definitions

In this instrument:

**event** means the 2009 Corsa de Mille Pini Rally.

**special stage**, in relation to the event, means a road or road related area identified for the event on the attached maps:

- Special Stage 1 – Pipeline I;
- Special Stage 2 – Bluetts I;
- Special Stage 3 – Pierces East I;

- Special Stage 4 – Tidbinbilla I;
- Special Stage 5 – East West I;
- Special Stage 6 – Pierces East II;
- Special Stage 7 – Pipeline II;
- Special Stage 8 – Bluetts II.

## **6 Expiry**

This instrument expires on 27 September 2009.

Jon Stanhope  
Minister for Transport  
17 September 2009

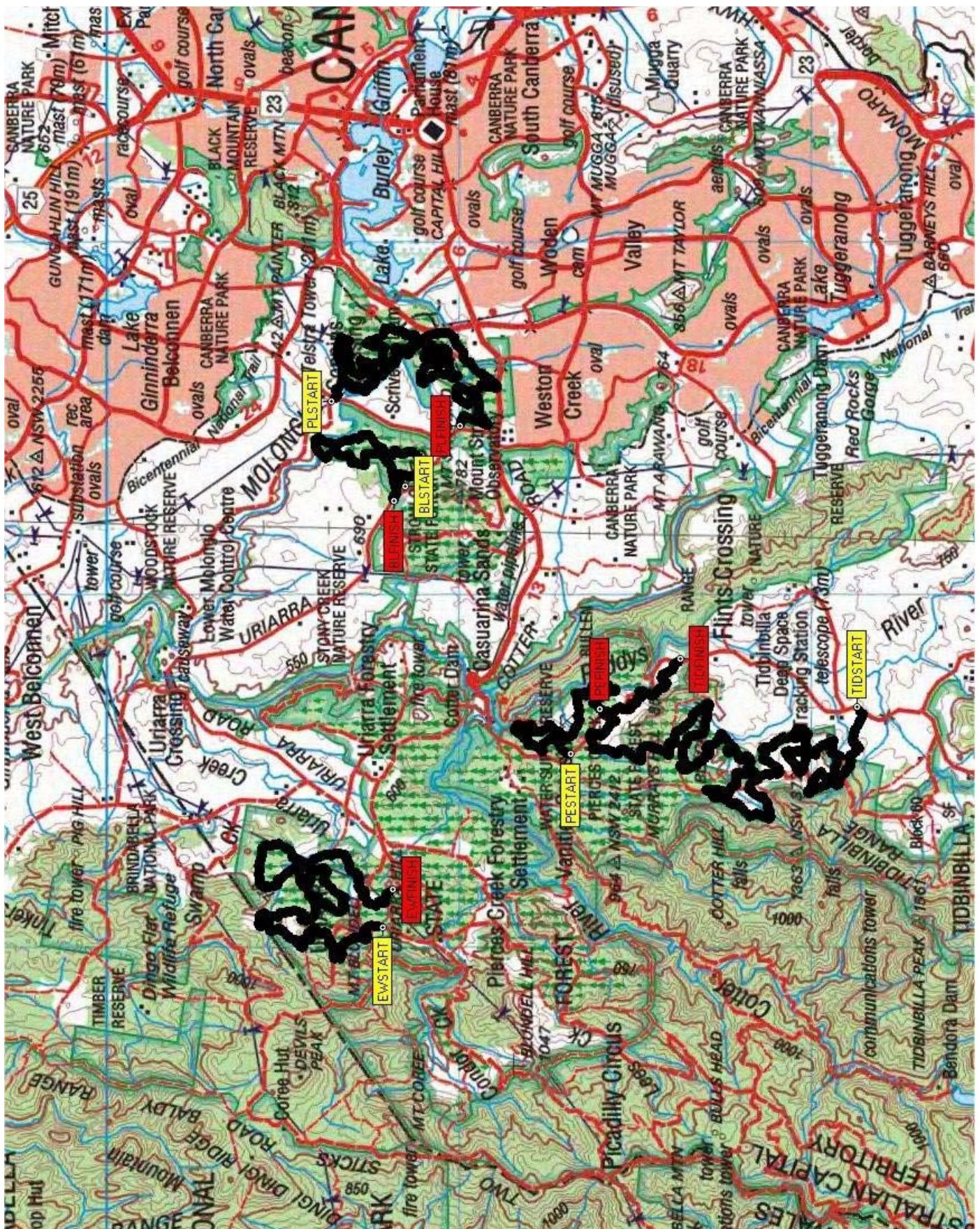


## 2009 Corsa di Mille Pini - Event Itinerary

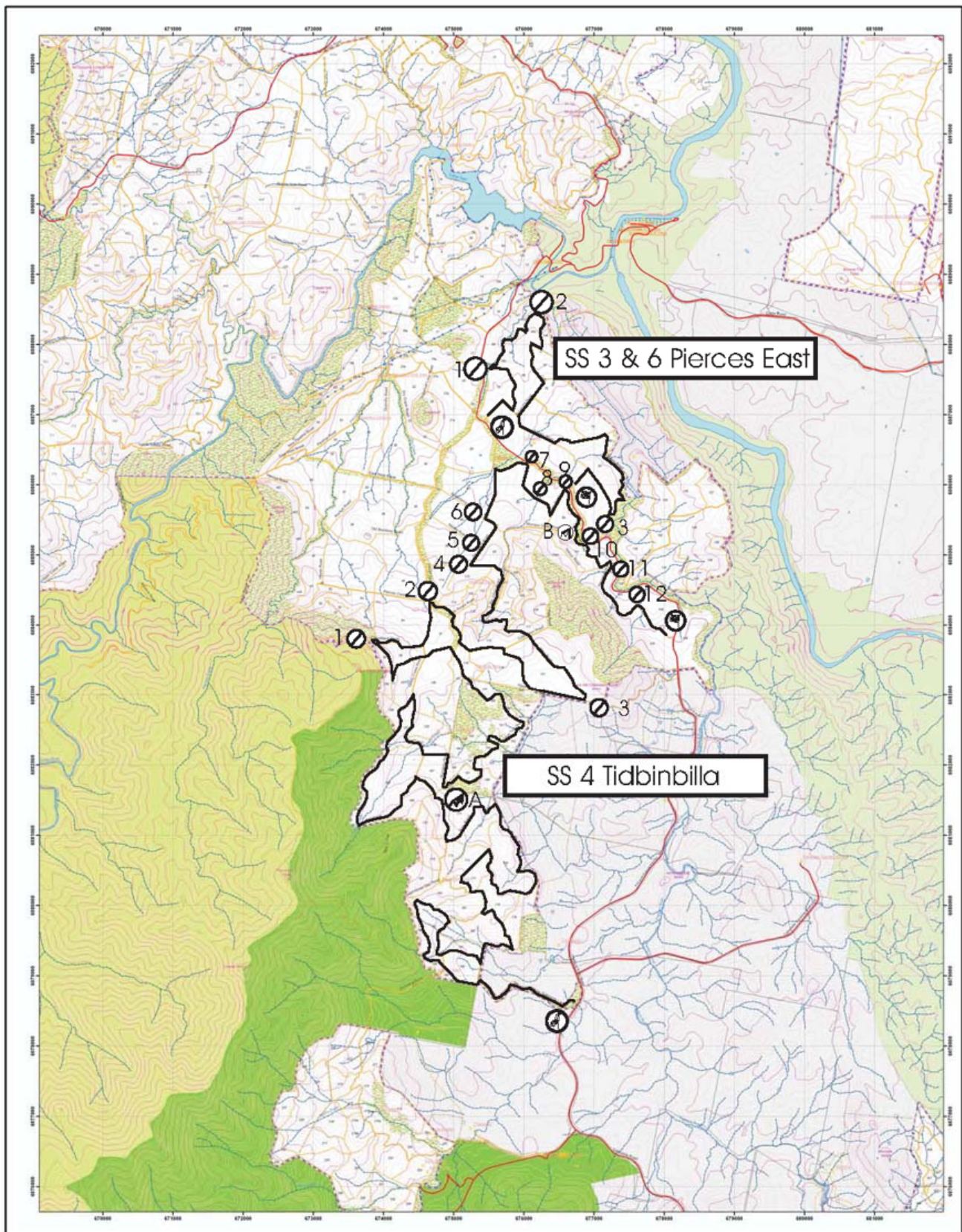
TC	Stage Number & Name	Competitive Distance (km)	Liaison Distance (km)	Total Distance (km)	Service Time (h:min)	Time Allowed incl. Service (h:min)	000	00	0	Car 1	Car 60	Control Closes	
<b>Section 1</b>													
1.1	Liaison - Start	0.00	11.43	11.43	0.00	0:15	8:45	9:00	9:15	9:30	11:28	11:58	
1.2	SS1 Pipeline I	26.36	2.54	28.90	0:00	0:50	9:03	9:18	9:33	9:48	11:46	12:16	
1.3	SS2 Blueetts I	9.56	18.61	28.17	0:20	0:55	9:56	10:11	10:26	10:41	12:39	13:09	
1.4	SS3 Pierces East I	8.60	10.04	18.64	0:00	0:35	10:54	11:09	11:24	11:39	13:37	14:07	
1.5	SS4 Tidbinbilla	39.52	5.03	44.55	0:40	1:28	11:32	11:47	12:02	12:17	14:15	14:45	
1.6	Regroup in	0.00	0.00	0.00	0:00	0:20	13:03	13:18	13:33	13:48	15:46	16:16	
<b>Section 2</b>													
2.1	Regroup out	0.00	17.80	17.80	0:00	0:22	13:26	13:41	13:56	14:11	16:09	16:39	
2.2	SS5 East West	22.87	16.42	39.29	0:00	0:45	13:51	14:06	14:21	14:36	16:34	17:04	
2.3	SS6 Pierces East II	8.60	21.19	29.79	0:20	0:52	14:39	14:54	15:09	15:24	17:22	17:52	
2.4	SS7 Pipeline II	26.36	2.54	28.90	0:00	0:32	15:34	15:49	16:04	16:19	18:17	18:47	
2.5	SS8 Blueetts II	9.56	10.29	19.85	0:00	0:23	16:09	16:24	16:39	16:54	18:52	19:22	
2.6	Finish						16:35	16:50	17:05	17:20	19:18	19:48	
<b>TOTAL</b>		151.43	115.89	267.32	1:20	7:17							

2 minute gaps for the entire event  
 Regroup will be a maximum of 20mins  
 \* Tidbinbilla Lane optional refuel (5mins)

151.43      115.89      267.32







## Pierces Creek North

1:25,000



Legend	
Height Point	Pierces Creek Forest
Triangulation Station	Urban Forest
Fence	Major Waterbodies
Pipeline	Stream
Road	10m contour intervals
Major Access	50m contour intervals
Minor Access	Pierces Creek National Park
Track	Thick
Motorbike Access	MHC Managed
	Open

This map is not intended for general use and is provided to be used only by ACT Forests and its staff and those expressly authorised by ACT Forests to do so. ACT Forests, the Australian Capital Territory and its servants and agents expressly disclaim all and any liability and responsibility to any person, whether a landowner or not, in respect of anything done or omitted to be done by any person in reliance on this map or any part of this map.

