

Road Transport (General) (Application of Road Transport Legislation) Declaration 2009 (No 2)

Disallowable instrument DI2009—76

made under the

Road Transport (General) Act 1999, s13 (Power to exclude vehicles, persons or animals from road transport legislation)

1 Name of instrument

This instrument is the *Road Transport (General) (Application of Road Transport Legislation) Declaration 2009 (No 2)*

2 Commencement

This instrument commences on 23 May 2009.

3 Declaration

I declare that the road transport legislation does not apply to the ACT roads or road related areas used or impinged on by any competing vehicle participating in a special stage of:

Appliance Installation Stages Rally on 23 May 2009

This declaration has effect during the special stages of the event.

Indicative start times and start control close times for vehicles participating in each competitive special stage of the event are set out in the attached Event Itinerary and Schedule of Activities.

This declaration expires on 24 May 2009.

For this declaration, the following definitions apply:

Competing vehicle means:

Any vehicle used for participating in a special stage of the event.

Event means:

Appliance Installation Stages Rally on 23 May 2009.

Special stage means:

The period from the time when an event official declares a special stage active for the testing sessions, media day and rally competition until the time when an event official declares course control for that special stage closed.

The special stages are shown on the attached maps:

- Special Stage 1 – Bluetts I
- Special Stage 2 – Greenhills I
- Special Stage 3 – Mega Installations I
- Special Stage 4 – Murrays
- Special Stage 5 – Mega Installations II
- Special Stage 6 – Pierces I
- Special Stage 7 – Mini Murray I
- Special Stage 8 – Pierces II
- Special Stage 9 – Mini Murrays II
- Special Stage 10 – Bluetts II
- Special Stage 11 – Greenhills II

Jon Stanhope
Minister for Transport
20 May 2009



2009 Appliance Installation Stages

Itinerary

23rd May 2009

as at 29.4.09

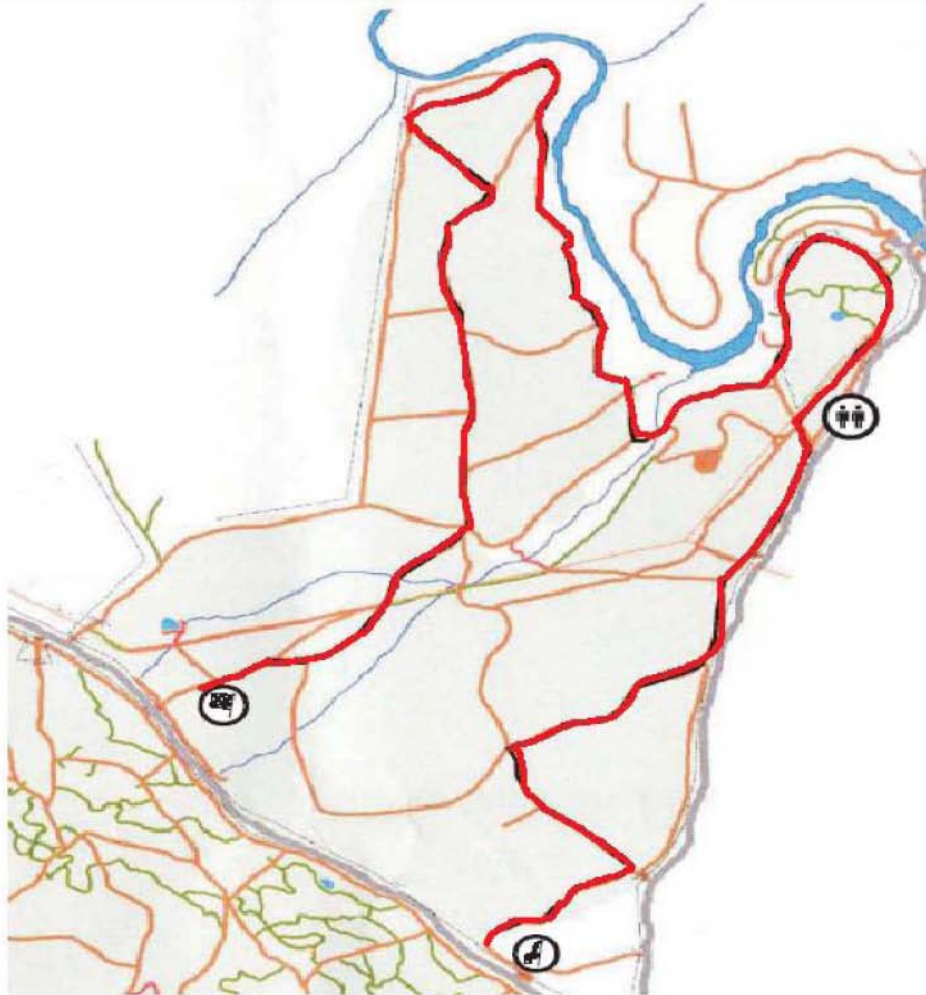
Stage Name	Total Distance (km)	Comp. Distance (km)	Section	Service Time (mins)	Time Allowed (h:min)	"000" Start time	"00" Start Time	"0" Start Time	Car 1 Start Time	Your Car Start time	Car 45 Start Time	Control closes	Average Speed (kph)
Section 1													
Liaison 1	6.27	0.00	1.0-1.1		0:10	8:50	9:10	9:20	9:30		10:58	11:28	37.62
SS 1 Bluetts I	13.19	10.15	1.1-1.2		0:15	9:03	9:23	9:33	9:43		11:11	11:41	52.76
SS 2 Greenhills I	35.75	14.75	1.2-1.3	15	1:00	9:21	9:41	9:51	10:01		11:29	11:59	35.75
SS 3 Mega Installations I	38.40	34.62	1.3-1.4		0:45	10:24	10:44	10:54	11:04		12:32	13:02	51.20
SS 4 Murrays	7.70	4.21	1.4-1.4A	15	0:30	11:12	11:32	11:42	11:52		13:20	13:50	15.40
Regroup			1.4A-1.4B		0:30	11:45	12:05	12:15	12:25		13:53	14:23	
Liaison 2	0.88		1.4B-1.5		0:08	12:18	12:38	12:48	12:58		14:26	14:56	6.60
SS 5 Mega Installations II	38.40	34.62	1.5-1.6		0:45	12:49	12:59	13:09	13:19		14:37	15:07	51.20
SS 6 Pierces I	10.12	8.26	1.6-1.7		0:15	13:17	13:37	13:47	13:57		15:25	15:55	40.48
SS 7 Mini Murrays I	7.56	4.07	1.7-1.7A	45	1:00	13:55	14:05	14:15	14:25		15:43	16:13	7.56
Regroup			1.7A-1.7B		0:20	14:38	14:58	15:08	15:18		16:46	17:16	
Liaison 3	0.66		1.7B-1.8		0:08	15:01	15:21	15:31	15:41		17:09	17:39	4.95
SS 8 Pierces II	10.12	8.26	1.8-1.9		0:10	15:32	15:42	15:52	16:02		17:20	17:50	60.72
SS 9 Mini Murrays II	32.66	4.07	1.9-1.10	20	0:55	15:45	15:55	16:05	16:15		17:33	18:03	35.63
SS 10 Bluetts II	13.19	10.15	1.10-1.11		0:15	16:23	16:43	16:53	17:03		18:31	19:01	52.76
SS 11 Greenhills II	20.61	14.75	1.11-1.12		0:25	16:41	17:01	17:11	17:21		18:49	19:19	49.46
(Finish)						17:06	17:26	17:36	17:46		19:14	19:44	
TOTAL	235.51	147.91											

Appliance installations Stages

23rd May 2009



SS 1 and SS10 Bluetts



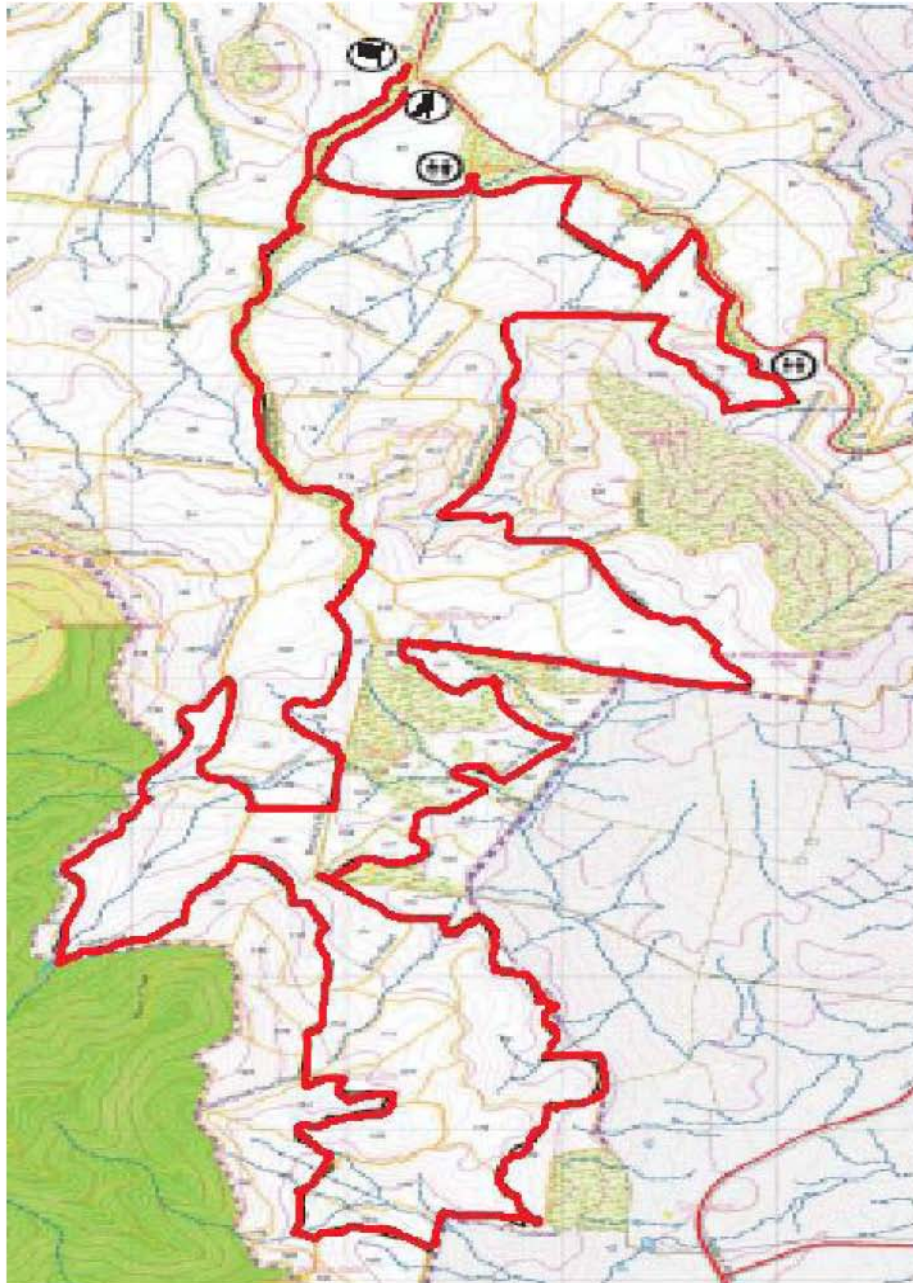
Appliance
INSTALLATION

SS 2 and SS 11 Greenhills

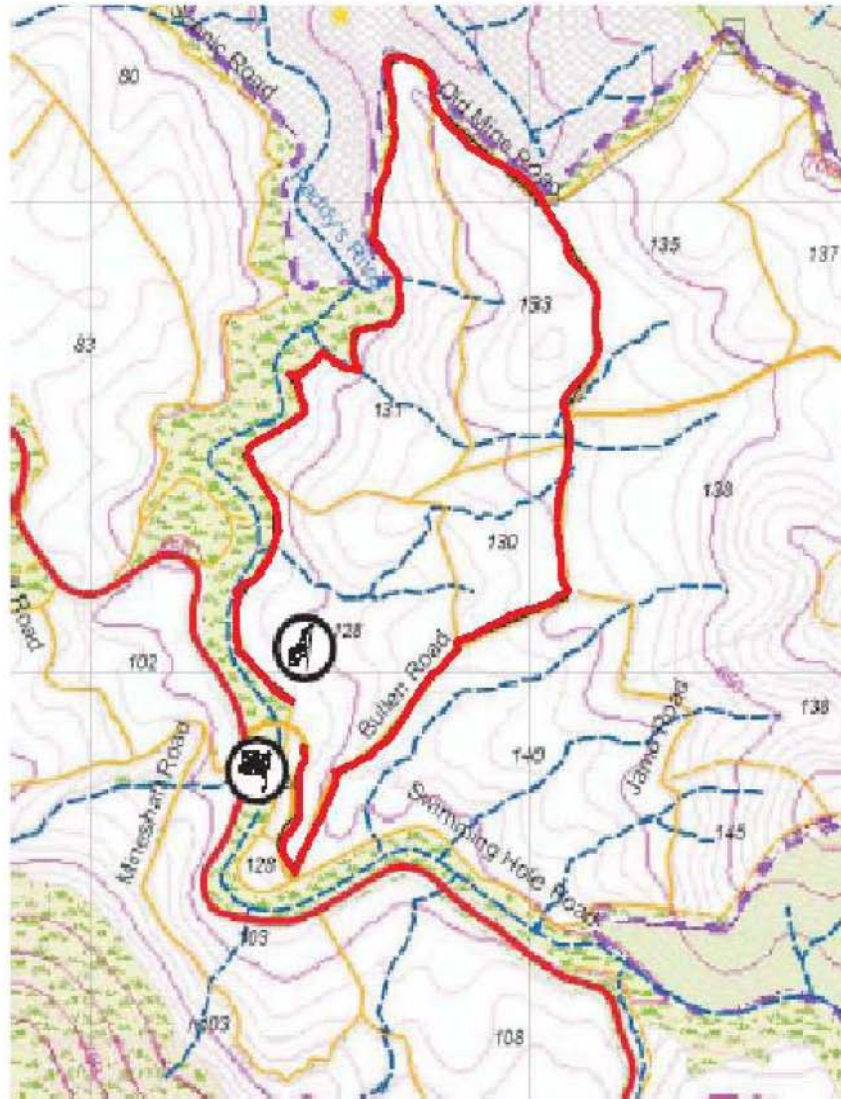


Appliance
INSTALLATION

SS 3 and 5 Mega Installations

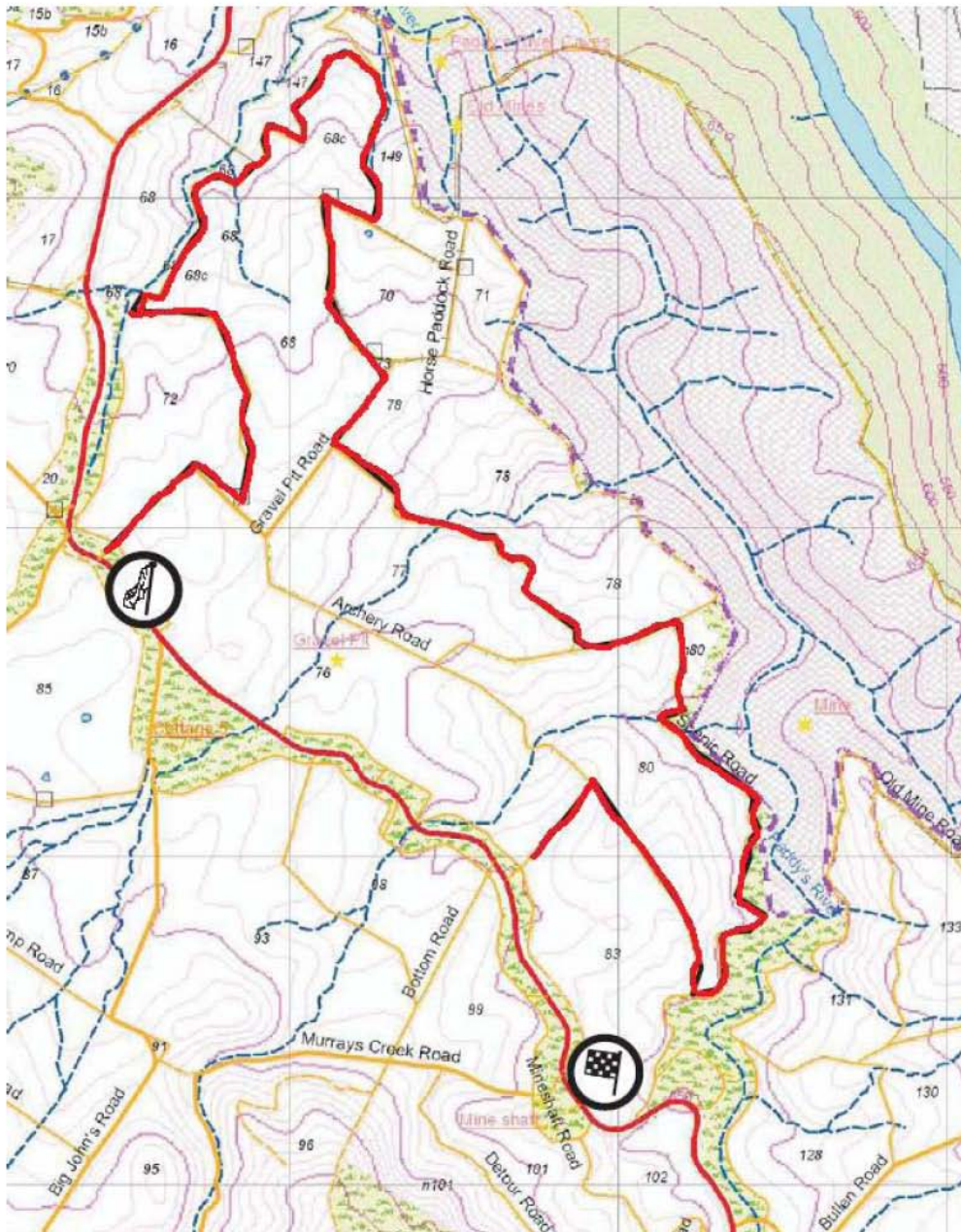


SS 4 Murrays



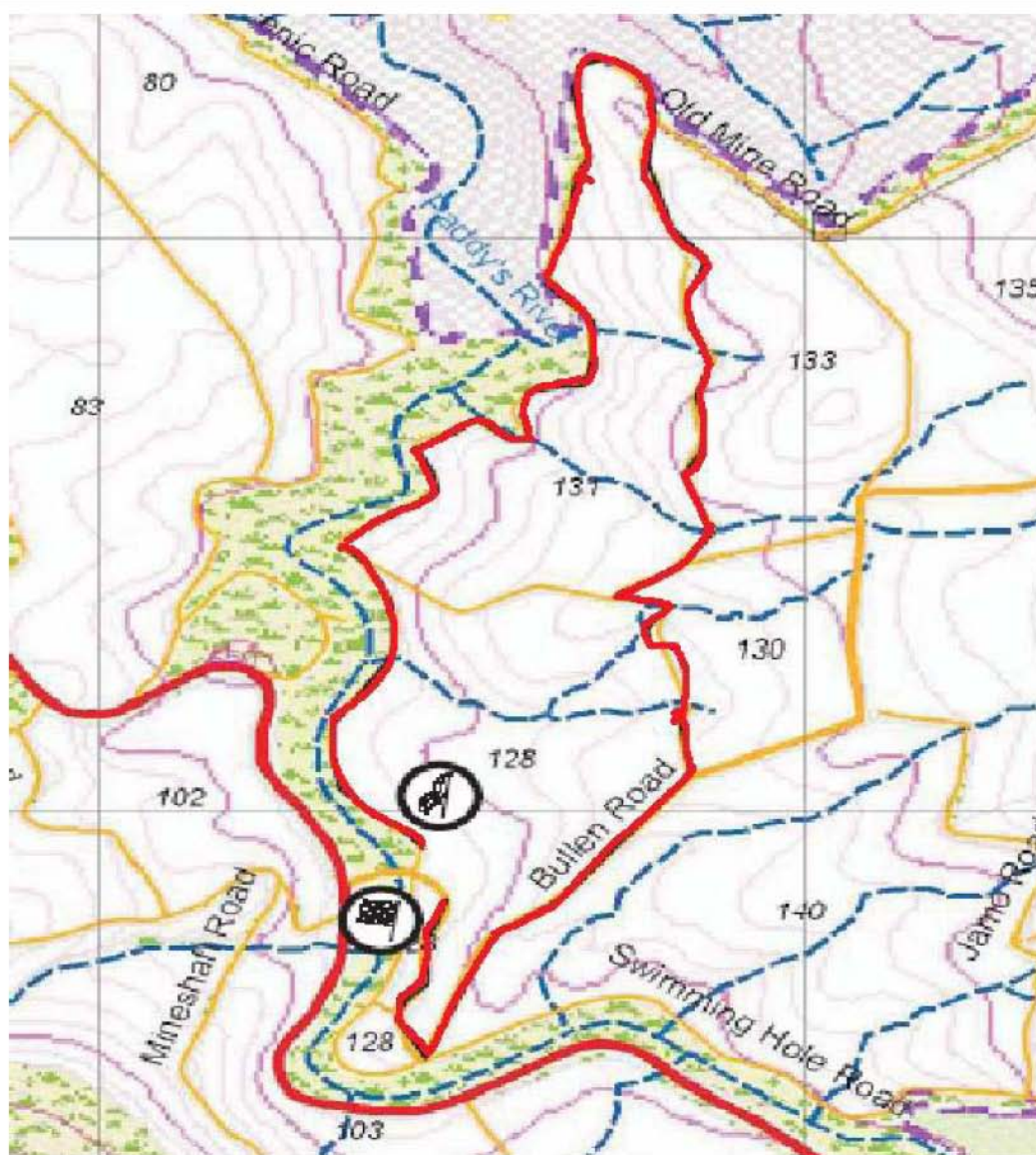
Appliance

SS 6 and SS 8 Pierces



Appliance
INSTALLATION

SS 7 and 9 Mini Murrays



Appliance
INSTALLATION