

Road Transport (General) Application of Road Transport Legislation Declaration 2010 (No 8)

Disallowable instrument DI2010—282

made under the

Road Transport (General) Act 1999, section 12 (Power to include or exclude areas in road transport legislation)

1 Name of instrument

This instrument is the *Road Transport (General) Application of Road Transport Legislation Declaration 2010 (No 8)*.

2 Commencement

This instrument commences on 5 November 2010.

3 Declaration

I declare that the road transport legislation does not apply to a road or road related area that is a special stage of the 2010 TRUSSME National Capital Rally.

4 Period of effect of declaration

The declaration has effect in relation to a special stage for the event for any period beginning when an event official declares (however described) the stage active for a testing session, media event or rally competition and ending when an event official declares (however described) the stage inactive.

5 Definitions

In this instrument:

event means the:

- a) 2010 TRUSSME National Capital Rally media day on 5 November 2010;
and
- b) 2010 TRUSSME National Capital Rally on 6 November 2010.

special stages, for the event, means a road or road related area identified for the event on the attached maps:

- Media Day;
- Special Stage 1 – Bluetts I;
- Special Stage 2 – Pipeline I;
- Special Stage 3 – Old Kowen Road I;
- Special Stage 4 – Macarthur I;
- Special Stage 5 – Aussie Farmers I;
- Special Stage 6 – Old Kowen Road II;
- Special Stage 7 – Macarthur II;
- Special Stage 8 – Aussie Farmers II.

6 Expiry

This instrument expires on 7 November 2010.

Simon Corbell
Acting Minister for Transport

27 October 2010

Itinerary

2010 NATIONAL CAPITAL RALLY 6/11/2010



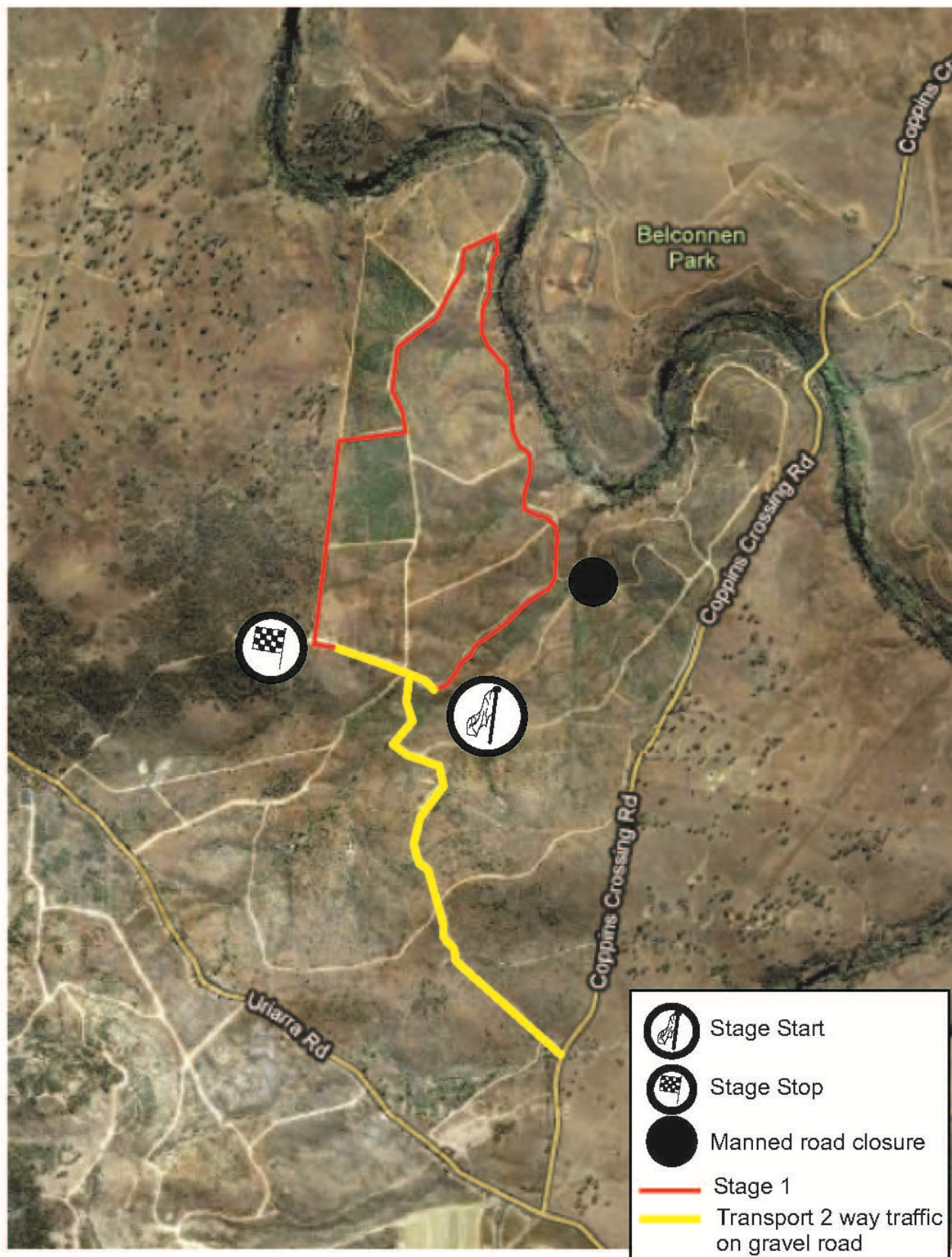
	Stage Name	Dist in Kms	Comp in Kms	Service Time minutes	Time Allowed	Ave. Speed	Course Car	"000"	"00" Closed to Stewards	"0"	Start Time Car 1	Start Time Car 45	Start Control Close
TC: 0	Liaison 1	8.95	0.00		0:10	53.70	10:15	10:30	10:55	11:15	11:30	12:58	13:18
TC: 1	Bluetts SS 1	13.26	13.26		0:15	14.47	10:28	10:43	11:08	11:28	11:43	13:11	13:31
TC: 2	Pipeline SS 2	34.95	7.36		0:45	34.95	10:46	11:01	11:26	11:46	12:01	13:29	13:49
TC: 3	Old kowen Rd I SS 3	22.25	20.86	25	0:50	44.50	11:34	11:49	12:14	12:34	12:49	14:17	14:37
TC: 4	Mack I SS 4	16.24	15.17		0:20	19.49	12:27	12:42	13:07	13:27	13:42	15:10	15:30
TC: 5	Aussie Farmers I SS 5	42.20	20.51	20	1:10	42.20	12:50	13:05	13:30	13:50	14:05	15:33	15:53
TC: 6	Old Kowen Rd II SS 6	22.25	20.86	25	0:50	44.50	14:03	14:18	14:43	15:03	15:18	16:46	17:06
TC: 6A	Regroup	maximum time will be			0:20		14:59	15:14	15:39	15:59	16:14	17:42	18:02
TC: 6B	Liaison 2	5.00	0.00		0:10	7.50	15:22	15:37	16:02	16:22	16:37	18:05	18:25
TC: 7	Macarthur II SS 7	16.24	15.17		0:20	38.98	15:35	15:50	16:15	16:35	16:50	18:18	18:38
TC: 8	Aussie Farmers II SS 8	45.43	20.86		0:55	77.88	15:58	16:13	16:38	16:58	17:13	18:41	19:01
TC: 9	Weston Finish						16:53	17:08	17:33	17:53	18:08	19:36	19:56

TOTAL KM	226.77	134.05
ACT series event	165.10	98.02

2010 TRUSSME NATIONAL CAPITAL RALLY

Media Day

November 5 2010

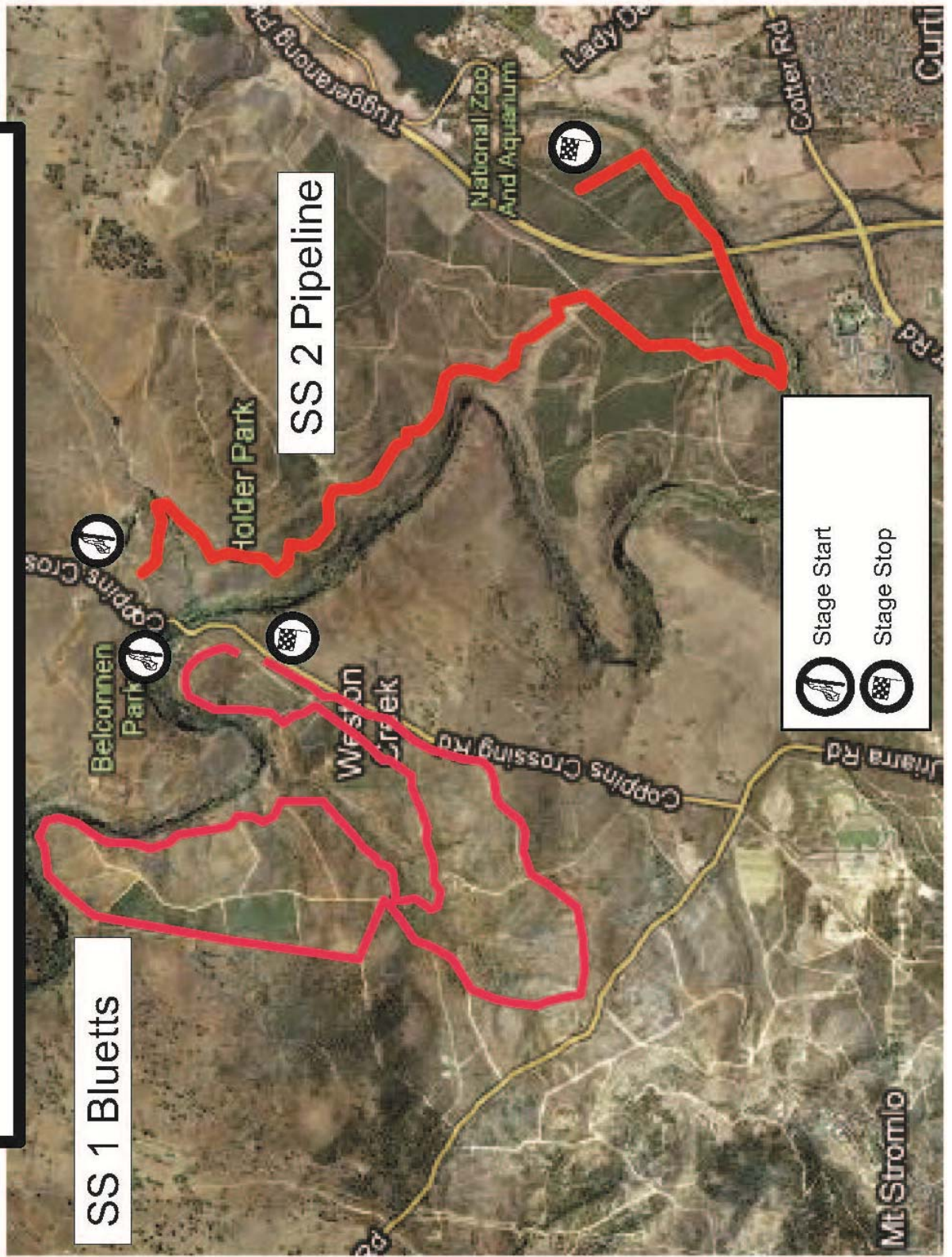


2010 TRUSSME NATIONAL CAPITAL RALLY

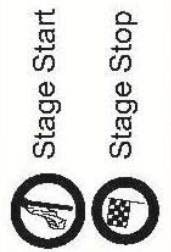
Special Stages 1 & 2

November 6th 2010

SS 1 Bluetts



SS 2 Pipeline



2010 TRUSSME NATIONAL CAPITAL RALLY

Special Stages 3,4,5,6,7 & 8

November 6th 2010

