

Australian Capital Territory

# Public Place Names (Monash) Determination 2024

Disallowable instrument DI2024–59

made under the

**Public Place Names Act 1989, s 3 (Minister to determine names)**

---

**1 Name of instrument**

This instrument is the *Public Place Names (Monash) Determination 2024*.

**2 Commencement**

This instrument commences on the day after its notification day.

**3 Determination of place name**

I determine the place name as indicated in the schedule.

Ben Ponton  
Delegate of the Minister for Planning  
18 April 2024

## SCHEDULE

(See s 3)

---

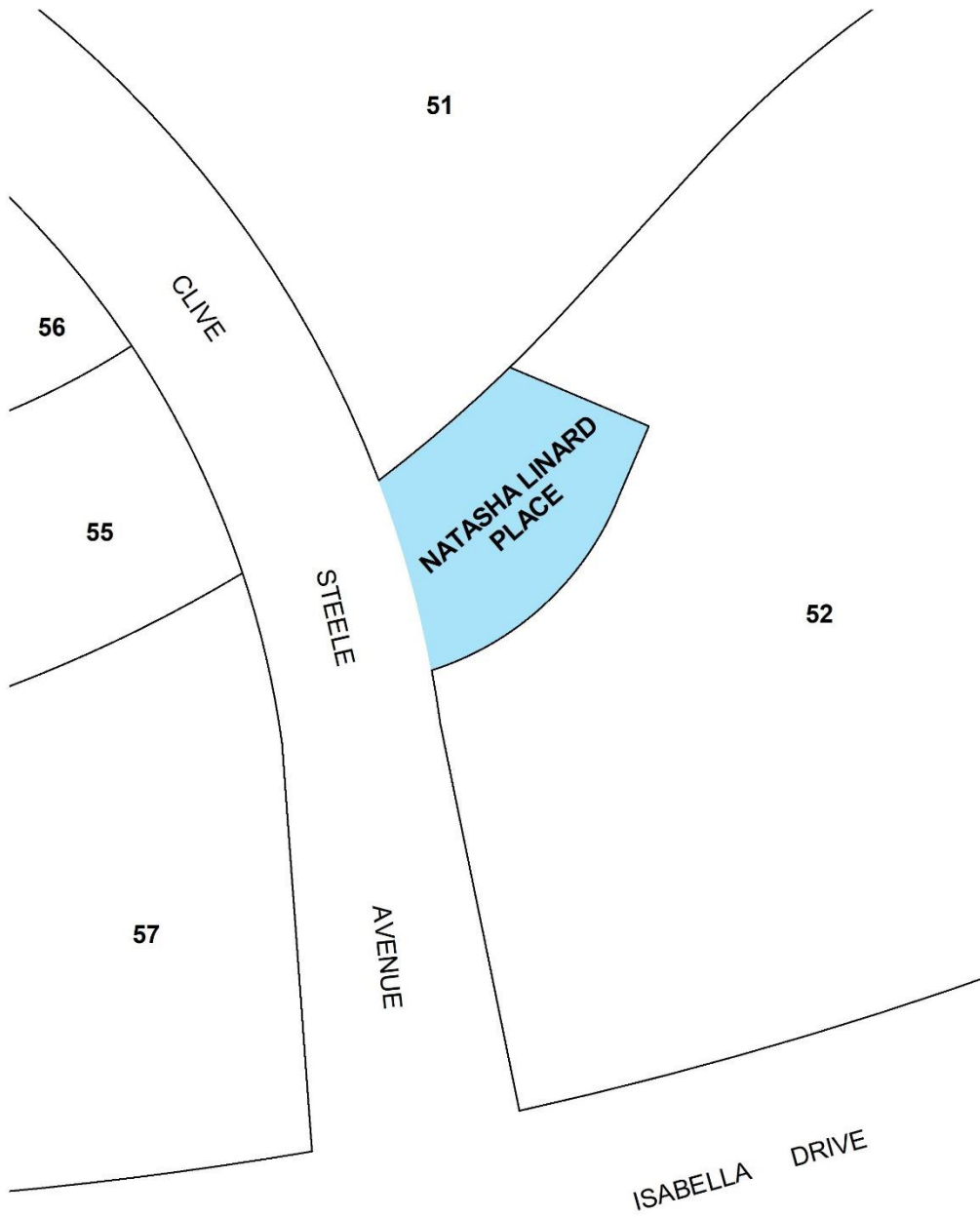
### Division of Monash – Engineers

The location of the public place with the following name is indicated on the associated diagram.

NAME	ORIGIN	SIGNIFICANCE
<b>Natasha Linard Place</b>	Natasha Maria Linard (1971–2014)	Engineer, mentor  In 1990 Natasha Linard was awarded an Overseas Telecommunications Commission (OTC) Women in Electrical Engineering Scholarship and was one of the first women in the first intake of students into the School of Engineering at the Australian National University (ANU). In 1995, she received a Bachelor of Engineering degree with honours and a Bachelor of Science. After graduating Linard was in the initial cohort of PhD students at the ANU College of Engineering, Computing and Cybernetics. Her thesis, ‘Identification of Nonlinear Systems’ was published in 1998. Linard helped establish the ANU Engineering Students Association, serving as Vice President, and was active in organising activities designed to build an inclusive, female friendly, environment. Dr Linard dedicated herself to mentoring young women entering the engineering program and was active in promoting engineering to year 12 female students in Canberra. From 1998 to 2012 she worked as a systems engineer and project manager on major defence projects. In 2012 she was appointed Director of the Performance Audit Services Group at the Australian National Audit Office. In honour of her contribution to engineering, the ANU has established the ‘Natasha Linard Scholarship for Women in Engineering & Technology’. The scholarship supports female students in their third, or later year of undergraduate studies at the ANU College of Engineering, Computing and Cybernetics. The award embodies Dr Linard’s contribution to engineering as an inspiring role model for women and mentor to early professionals.



**Schedule**  
(see section 3)



## DIVISION OF MONASH

Diagram