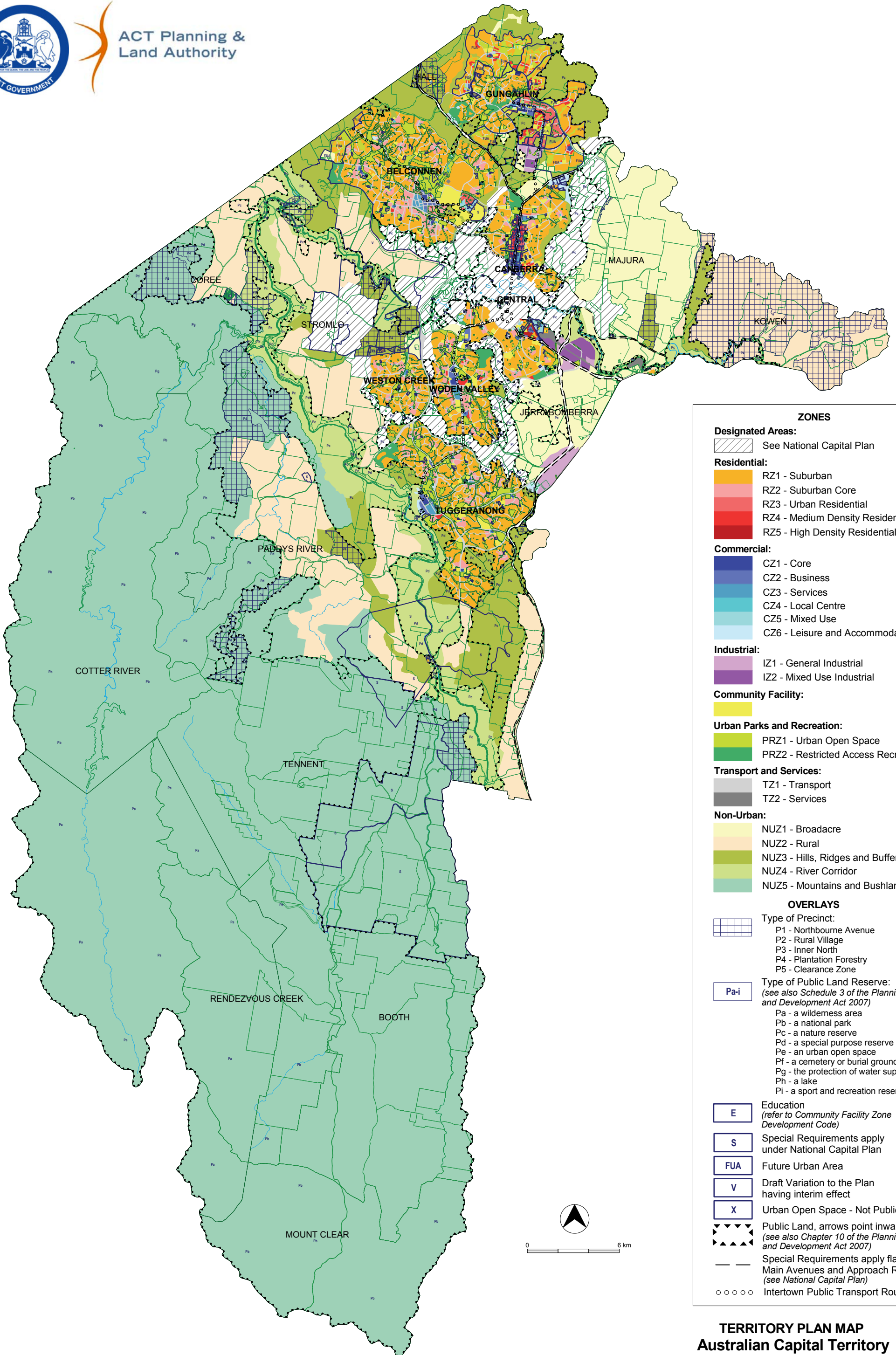




ACT Planning &
Land Authority



ZONES

Designated Areas:
 See National Capital Plan

Residential:
 RZ1 - Suburban
 RZ2 - Suburban Core
 RZ3 - Urban Residential
 RZ4 - Medium Density Residential
 RZ5 - High Density Residential

Commercial:
 CZ1 - Core
 CZ2 - Business
 CZ3 - Services
 CZ4 - Local Centre
 CZ5 - Mixed Use
 CZ6 - Leisure and Accommodation

Industrial:
 IZ1 - General Industrial
 IZ2 - Mixed Use Industrial

Community Facility:

Urban Parks and Recreation:
 PRZ1 - Urban Open Space
 PRZ2 - Restricted Access Recreation

Transport and Services:
 TZ1 - Transport
 TZ2 - Services

Non-Urban:
 NUZ1 - Broadacre
 NUZ2 - Rural
 NUZ3 - Hills, Ridges and Buffer
 NUZ4 - River Corridor
 NUZ5 - Mountains and Bushland

OVERLAYS

Type of Precinct:
 P1 - Northbourne Avenue
 P2 - Rural Village
 P3 - Inner North
 P4 - Plantation Forestry
 P5 - Clearance Zone

Type of Public Land Reserve:
 (see also Schedule 3 of the Planning and Development Act 2007)
 Pa - a wilderness area
 Pb - a national park
 Pc - a nature reserve
 Pd - a special purpose reserve
 Pe - an urban open space
 Pf - a cemetery or burial ground
 Pg - the protection of water supply
 Ph - a lake
 Pi - a sport and recreation reserve

E Education
(refer to Community Facility Zone Development Code)

S Special Requirements apply under National Capital Plan

FUA Future Urban Area

V Draft Variation to the Plan having interim effect

X Urban Open Space - Not Public Land

Public Land, arrows point inwards
(see also Chapter 10 of the Planning and Development Act 2007)

Special Requirements apply flanking Main Avenues and Approach Routes
(see National Capital Plan)

Intertown Public Transport Route

TERRITORY PLAN MAP
Australian Capital Territory