

Emergencies (Built Up Area and Bushfire Abatement Zone) Declaration 2012

Notifiable Instrument NI2012– 450

made under the

Emergencies Act 2004, s 71 (Commissioner may declare bushfire abatement zone) and s 65 (What is a built-up area and a rural area?)

1. Name of Instrument

This instrument is the *Emergencies (Built Up Area and Bushfire Abatement Zone) Declaration 2012*.

2. Commencement

This instrument commences on the day after its notification.

3. Declaration of built-up area and bushfire abatement zone

The ACT Emergency Services Commissioner, after consulting with the Chief Officer (Fire and Rescue) and the Chief Officer (ACT Rural Fire Service), hereby declares the areas described in the map titled “Built Up Area 2012”, held by the ACT Emergency Services Agency to be a built-up area under section 65(1) of the Act.

The ACT Emergency Services Commissioner, after consulting with the conservator and the planning and land authority, hereby declares the areas described in the map titled “Bushfire Abatement Zone 2012”, held by the ACT Emergency Services Agency, to be a bushfire abatement zone under section 71(1) of the Act.

An indicative map of the built up area and the bushfire abatement zone appears at Schedule 1 to this instrument.

4. Revocation

NI 2006-225 is revoked.

NI 2006-226 is revoked.

Mark Crossweller
ACT Emergency Services Commissioner
6 August 2012

Schedule 1

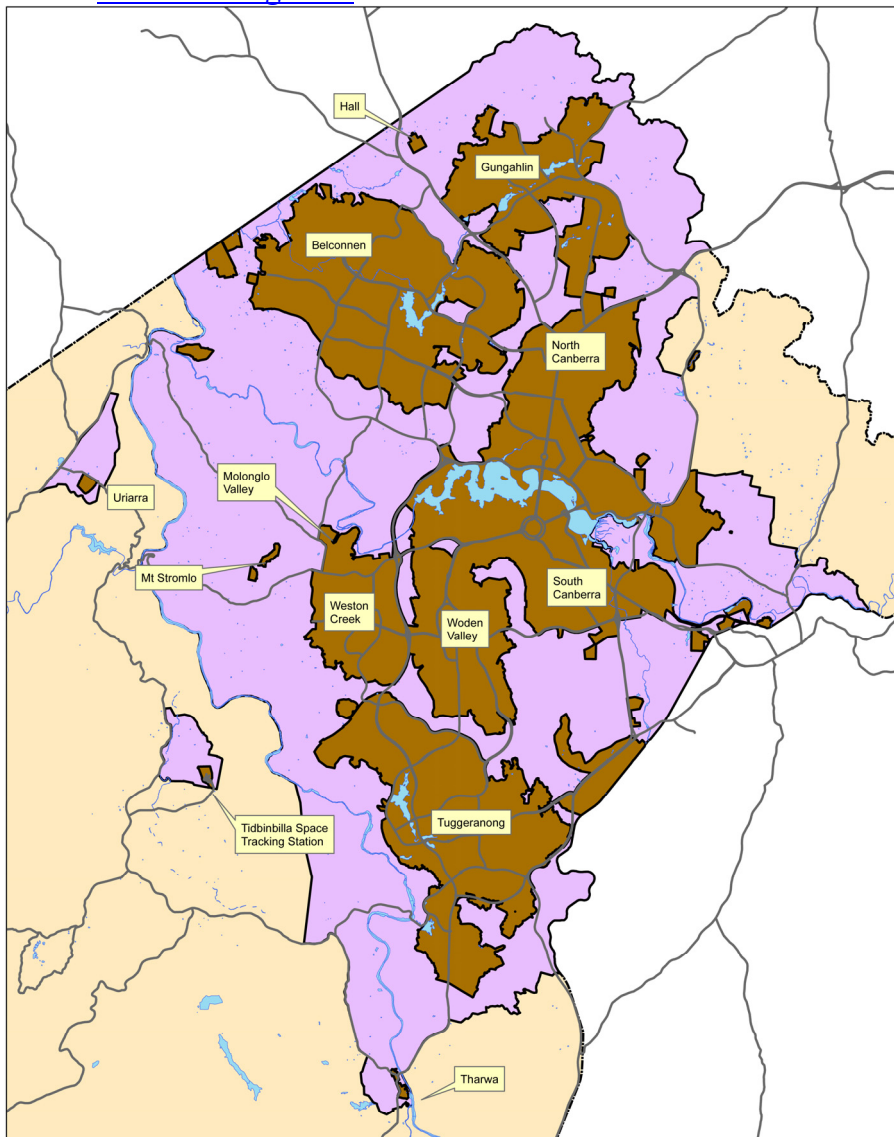
DECLARATION OF A BUILT UP AREA AND BUSHFIRE ABATEMENT ZONE.

The areas shown in brown on the indicative map below comprise a bushfire Built Up Area for the purposes of section 65(1) of the *Emergencies Act 2004*.

The areas shown in purple on the indicative map below comprise a Bushfire Abatement Zone for the purposes of section 71(1) of the *Emergencies Act 2004*.

Digital versions of this map are available from the ACT ESA

Website: www.esa.act.gov.au



**ADMINISTRATIVE
DEFINITION
BUILT UP AREA AND
BUSHFIRE ABATEMENT
ZONE**

2012-2013

Legend

- BUILT-UP AREA
- BUSHFIRE ABATEMENT ZONE
- RURAL AREA



Data supplied by various stakeholders under ANZLIC* Guidelines
The information contained herein has been provided in good faith.
Effort has been made to ensure its accuracy and completeness.
The Stakeholders take no responsibility for errors or omission nor
any loss or damage that may result from the use of this
information.
*Australia New Zealand Land Information Council.

Advice on the location of areas may be obtained from the
Spatial Services Section of the ACT Emergency Services Agency.