

Planning and Development (Environmental Impact Statement - Theodore to Gilmore 132kV Transmission Line Upgrade) Exemption 2013

Notifiable Instrument NI2013–379

Made under the

Planning and Development Act 2007 s 211 (EIS not required if development application exempted)

1 Name of instrument

This instrument is the *Planning and Development (Environmental Impact Statement – Theodore to Gilmore 132kV Transmission Line Upgrade) Exemption 2013*.

2 Commencement

This instrument commences on the day after notification.

3 EIS not required if development application exempted

In accordance with section 211 of the Planning and Development Act 2007, the Minister has agreed that the Theodore to Gilmore 132kV Transmission Line Upgrade will not require further environmental assessment.

A copy of the Minister's exemption is shown at Attachment A.

A copy of the exemption report may be obtained from ESDD's website:

http://www.actpla.act.gov.au/topics/design_build/da_assessment/environmental_assessment/exemption_from_requiring_and_eis_s211

4 Completion

The s211 exemption expires 18 months after the day the notice is notified.

Ben Ponton

Acting Director General

Environment and Sustainable Development Directorate

29 August 2013



Simon Corbell MLA

ATTORNEY-GENERAL
MINISTER FOR THE ENVIRONMENT AND SUSTAINABLE DEVELOPMENT
MINISTER FOR POLICE AND EMERGENCY SERVICES
MINISTER FOR WORKPLACE SAFETY AND INDUSTRIAL RELATIONS

COPY

MEMBER FOR MOLONGLO

Mr Rob Purdon
Director
Purdon Associates Pty Ltd
3/9 McKay Street
TURNER ACT 2612

Dear Mr Purdon

Theodore to Gilmore 132kV Transmission Line Upgrade s211 exemption from the requirement to complete an Environmental Impact Statement

I refer to your application of 10 January 2013 under Section 211 of the *Planning and Development Act 2007* (the Act) for an exemption from the requirement to complete an Environmental Impact Statement (EIS).

As the Minister responsible for the Act I have considered the information submitted in support of your request, and determined that the expected environmental impact of the proposal has been sufficiently addressed.

The Theodore to Gilmore 132kV Transmission Line Upgrade as indicated in the attached map is exempt from the requirement to complete an EIS. You are now able to lodge an impact track development application for actions described in your application with the Environment and Sustainable Development Directorate. Please ensure that you include a copy of this letter with your development application.

Yours sincerely

Simon Corbell MLA
Minister for the Environment and Sustainable Development

22.4.13

ACT LEGISLATIVE ASSEMBLY

London Circuit, Canberra ACT 2601 GPO Box 1020, Canberra ACT 2601

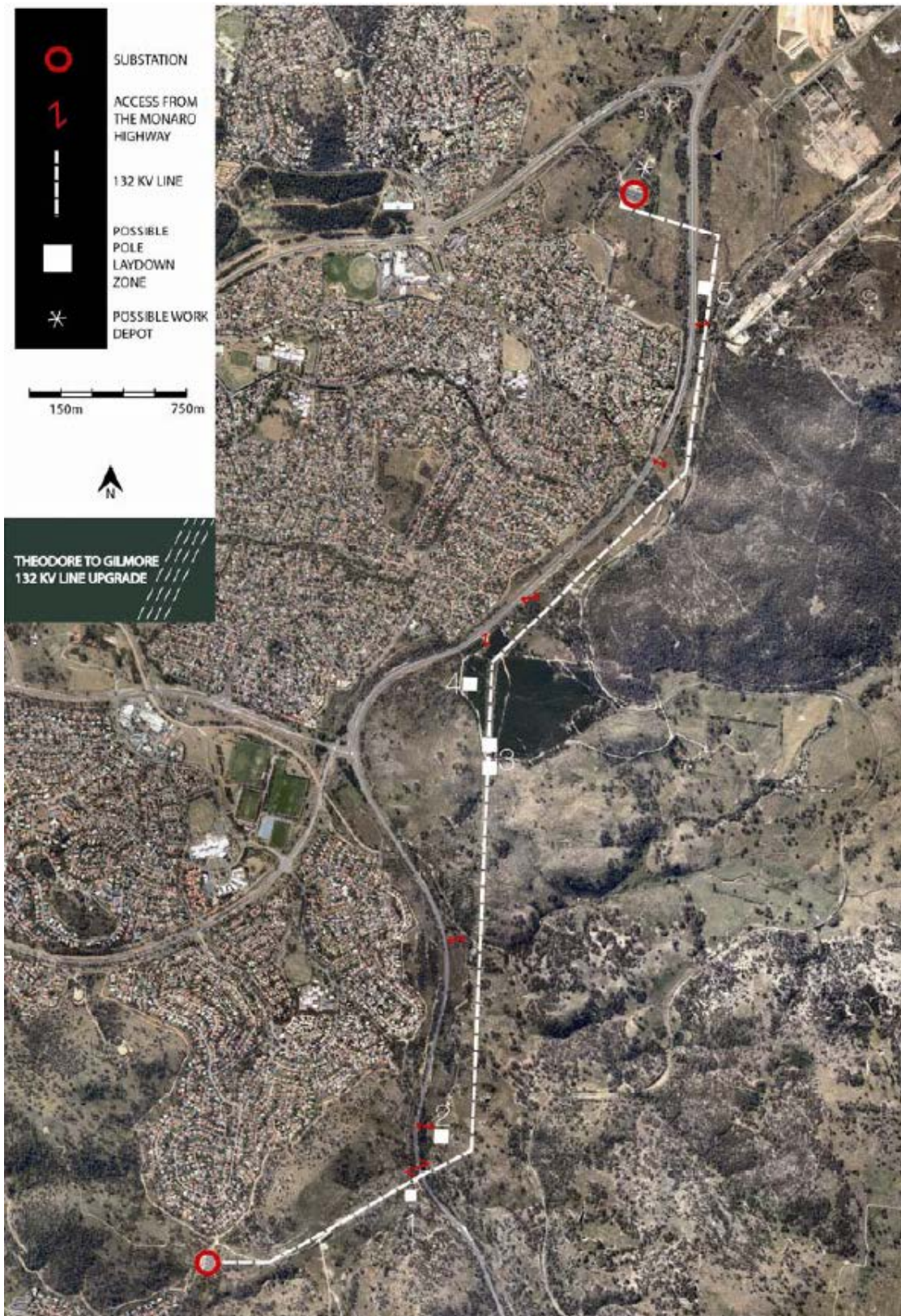
Phone: (02) 6205 0000 Fax: (02) 6205 0535

Email: corbell@act.gov.au Twitter: @SimonCorbell Facebook: www.facebook.com/simon.corbell

Authorised by the ACT Parliamentary Counsel—also accessible at www.legislation.act.gov.au

100
CANBERRA

Attachment 1. Theodore to Gilmore 132kV Transmission Line Upgrade



Source: *Theodore to Gilmore 132kV Transmission Line Upgrade - Application for EIS Exemption under Section 211 of the Planning and Development Act 2007 (ACT)*, Purdon Associates Pty Ltd, 7 December 2012.