

# Emergencies (Built-Up Area and Bushfire Abatement Zone) Declaration 2016 (No 2)

## Notifiable Instrument NI2016–190

made under the

**Emergencies Act 2004, s 71 (Commissioner may declare bushfire abatement zone) and s 65 (What is a built-up area and a *rural area*?)**

---

### **1 Name of Instrument**

This instrument is the *Emergencies (Built-Up Area and Bushfire Abatement Zone) Declaration 2016 (No 2)*.

### **2 Commencement**

This instrument commences on the day after its notification.

### **3 Declaration of built-up area and bushfire abatement zone**

I declare the brown areas marked on the map at Schedule 1, held by the ACT Emergency Services Agency, to be a built-up area under s 65(1) of the Act. I have consulted with the Chief Officer (ACT Fire and Rescue) and the Chief Officer (ACT Rural Fire Service) before making this declaration.

I declare the purple areas marked on the map at Schedule 1, held by the ACT Emergency Services Agency, to be a bushfire abatement zone under section 71(1) of the Act. I have consulted with the conservator and the planning and land authority before making this declaration.

### **4 Revocation**

This instrument revokes the *Emergencies (Built-Up Area and Bushfire Abatement Zone) Declaration 2016 (No 1)* NI2016-15.

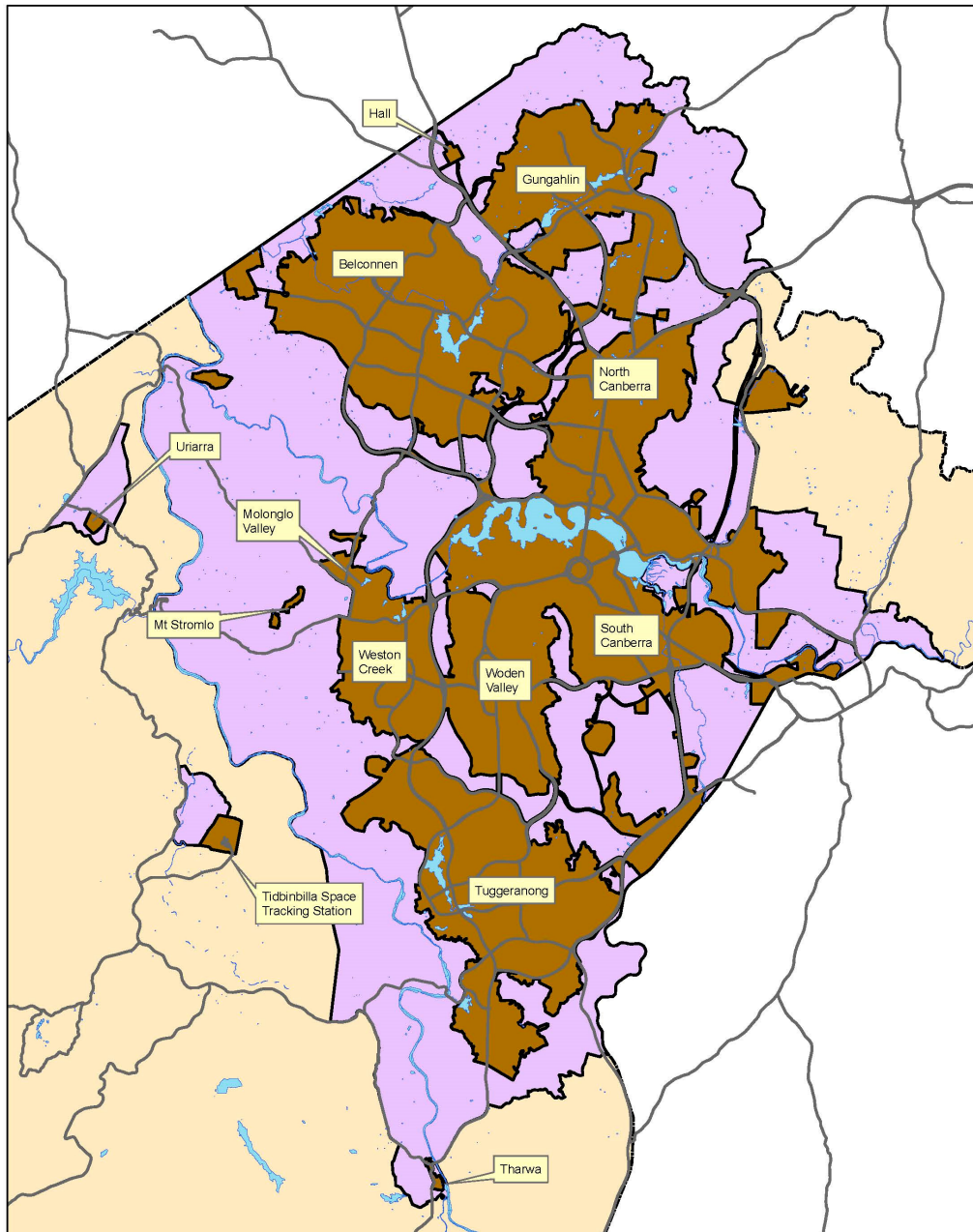
Dominic Lane AFSM  
ACT Emergency Services Agency  
Commissioner  
18 April 2016

## Schedule 1

### DECLARATION OF A BUILT UP AREA AND BUSHFIRE ABATEMENT ZONE.

The areas shown in brown on the indicative map below comprise a bushfire Built-Up Area for the purposes of section 65(1) of the *Emergencies Act 2004*.




The areas shown in purple on the indicative map below comprise a Bushfire Abatement Zone for the purposes of section 71(1) of the *Emergencies Act 2004*.



**ADMINISTRATIVE  
DEFINITION  
BUILT UP AREA AND  
BUSHFIRE ABATEMENT  
ZONE**

**March 2016**

#### Legend

-  Built Up Area
-  Bushfire Abatement Zone
-  Rural Area



Data supplied by various stakeholders under ANZLIC\* Guidelines  
The information contained herein has been provided in good faith. Effort has been made to ensure its accuracy and completeness. The Stakeholders take no responsibility for errors or omission nor any loss or damage that may result from the use of this information.  
\*Australia New Zealand Land Information Council.  
Advice on the location of areas may be obtained from the Spatial Services Section of the ACT Emergency Services Agency.