

Australian Capital Territory

Nature Conservation (Closed Reserves – Total Fire Ban) Declaration 2017

Notifiable instrument NI2017–43

made under the

Nature Conservation Act 2014, s259 (Conservator may close reserve)

1 Name of instrument

This instrument is the *Nature Conservation (Closed Reserves – Total Fire Ban) Declaration 2017*.

2 Commencement

This instrument commences on the day it is made.

Note: Section 259(5) of the *Nature Conservation Act 2014* provides that a closed reserve declaration may commence on a day or at a time earlier than its notification date.

3 Declaration

I declare public access to the reserves specified in column 2 of schedule 1 is prohibited during the period specified in the corresponding entry in column 3 of schedule 1.

4 Definition

Reserve – see section 169 *Nature Conservation Act 2014*

Simon Tozer
Delegate, Nature Conservation Act 2014

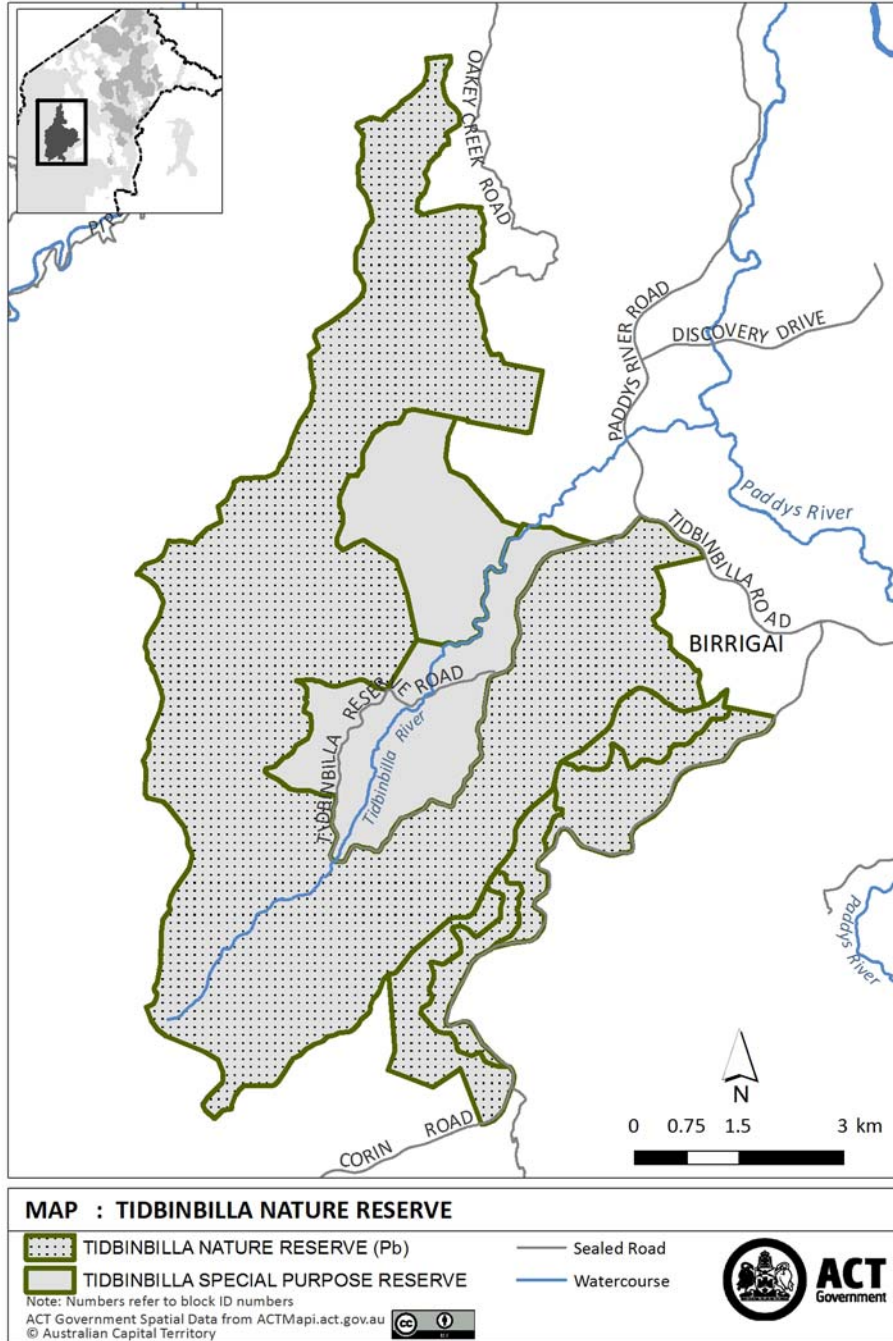
29 January 2017

Schedule 1

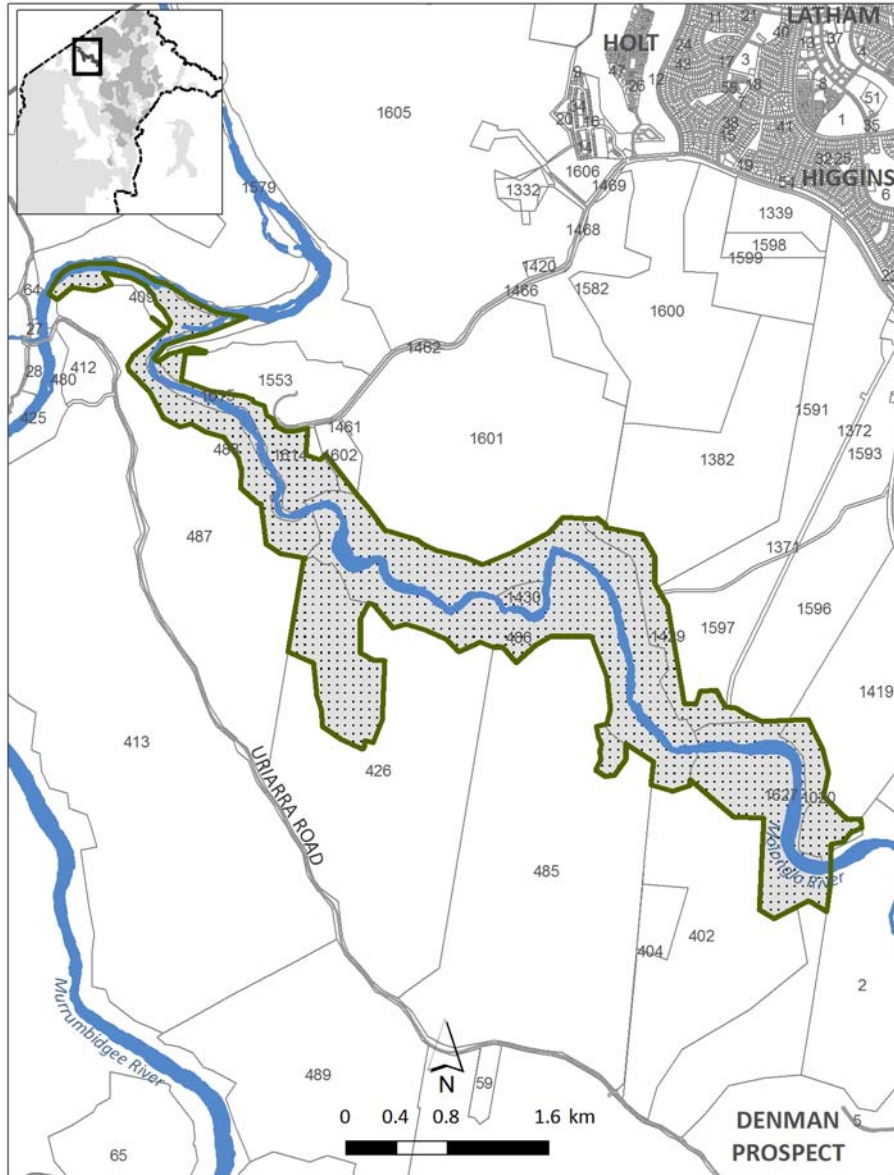
(See section 3 – *Nature Conservation (Closed Reserves- Total Fire Ban) Declaration 2017*)

Column1 item number	Column 2 Reserve	Column 3 Times when public access is prohibited
1.	The area identified in schedule 2 known as Tidbinbilla Nature Reserve	30 January 2017
2.	The area identified in schedule 3 known as Lower Molonglo River Corridor	30 January 2017
3.	The area identified in schedule 4 known as Molonglo Gorge Nature Reserve	30 January 2017
4.	The area identified in schedule 5 known as Mulligans Flat Woodlands Sanctuary	30 January 2017

SCHEDULE 2
Tidbinbilla Nature Reserve
 (see s 3 (7))



SCHEDULE 3
 Lower Molonglo River Corridor
 (see s 3 (7))



MAP : LOWER MOLONGLO RIVER CORRIDOR

Nature Reserve (Pc)
 Sealed Road
 Watercourse

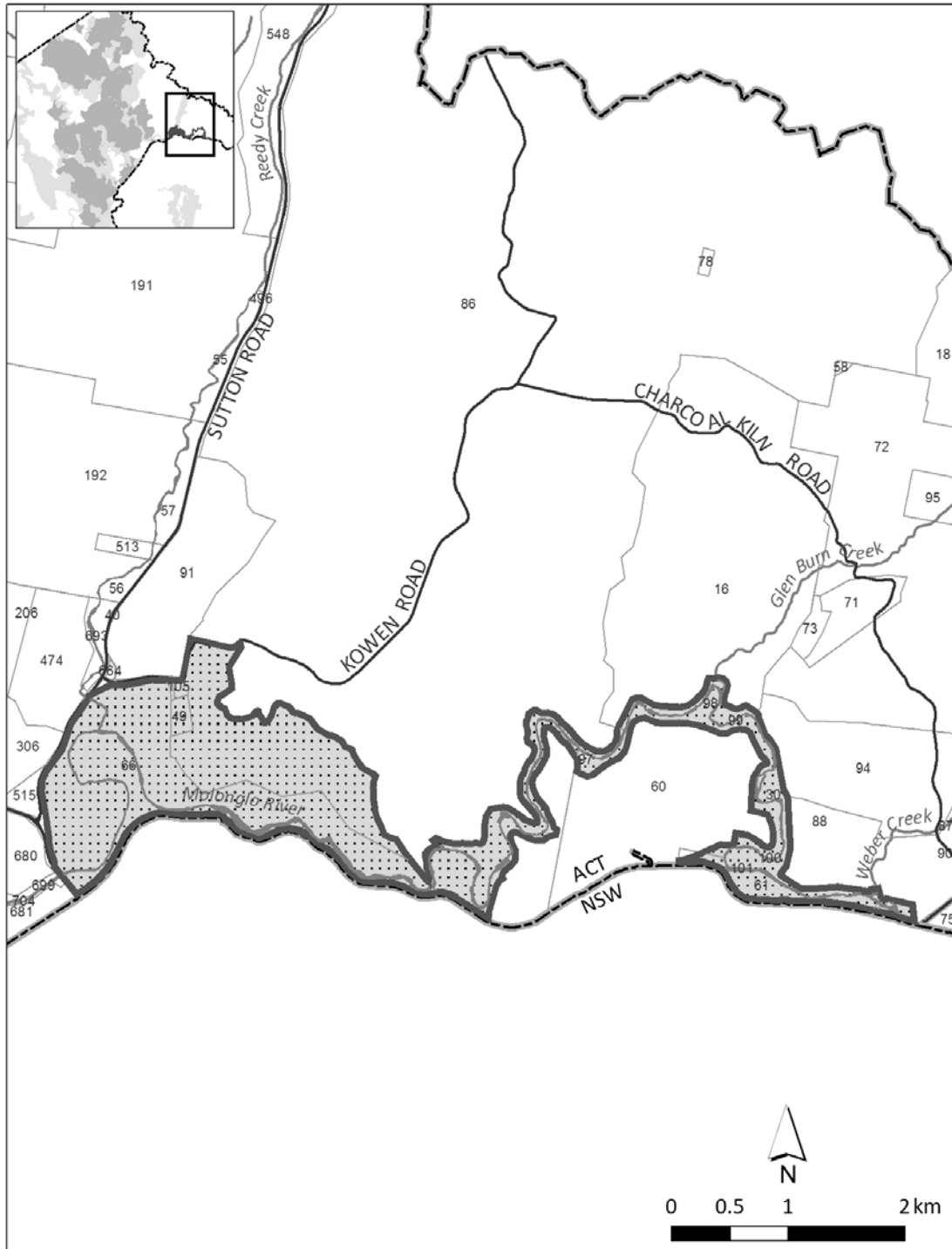
Note: Numbers refer to block ID numbers
 ACT Government Spatial Data from ACTMapi.act.gov.au
 © Australian Capital Territory







SCHEDULE 4

Molonglo Gorge Nature Reserve

(see s 3 (7))



MAP : MOLONGLO GORGE NATURE RESERVE, KOWEN

- | | |
|---|---|
|  Nature Reserve (Pc) |  Sealed Road |
|  ACT/NSW border |  River / Creek |

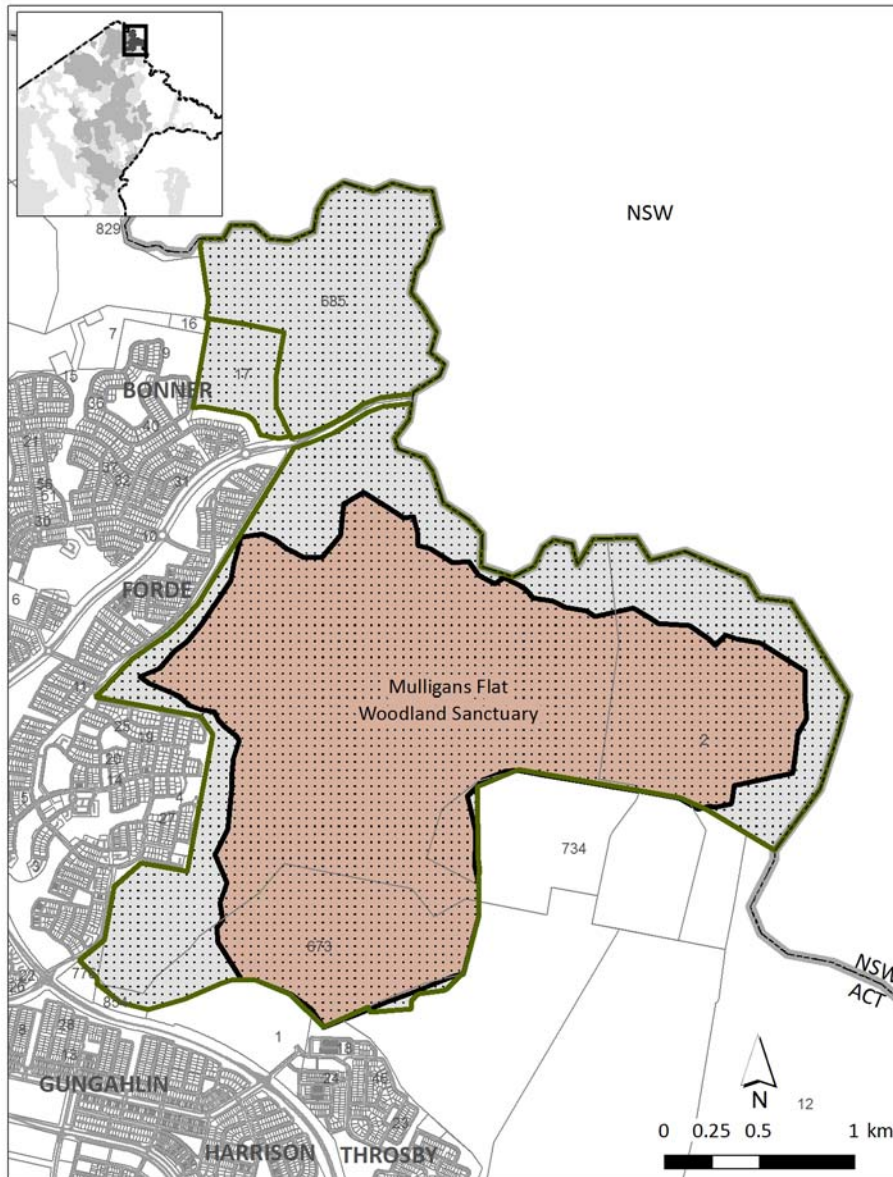
Note: Numbers refer to block ID numbers
Interactive maps are available at www.actmapi.act.gov.au



SCHEDULE 5

Mulligans Flat Sanctuary

(see s 3 (7))



MAP : MULLIGANS FLAT WOODLAND SANCTUARY

Mulligans Flat Nature Reserve (Pc) Mulligans sanctuary fence Sealed Road

ACT/NSW border

Note: Numbers refer to block ID numbers

ACT Government Spatial Data from ACTMapi.act.gov.au

© Australian Capital Territory

