

Australian Capital Territory

Nature Conservation (Closed Reserves— Total Fire Ban) Declaration 2017 (No 4)

Notifiable instrument NI2017–77

made under the

Nature Conservation Act 2014, s 259 (Conservator may close reserve)

1 Name of instrument

This instrument is the *Nature Conservation (Closed Reserves—Total Fire Ban) Declaration 2017 (No 4)*.

2 Commencement

This instrument commences on the day it is signed.

Note: Section 259 (5) of the *Nature Conservation Act 2014* provides that a closed reserve declaration may commence on a day or at a time earlier than its notification date.

3 Declaration

I declare public access to the reserves specified in column 2 of schedule 1 is prohibited during the period specified in the corresponding entry in column 3 of schedule 1.

Tony Scherl
Delegate of the Conservator of Flora and Fauna
16 February 2017

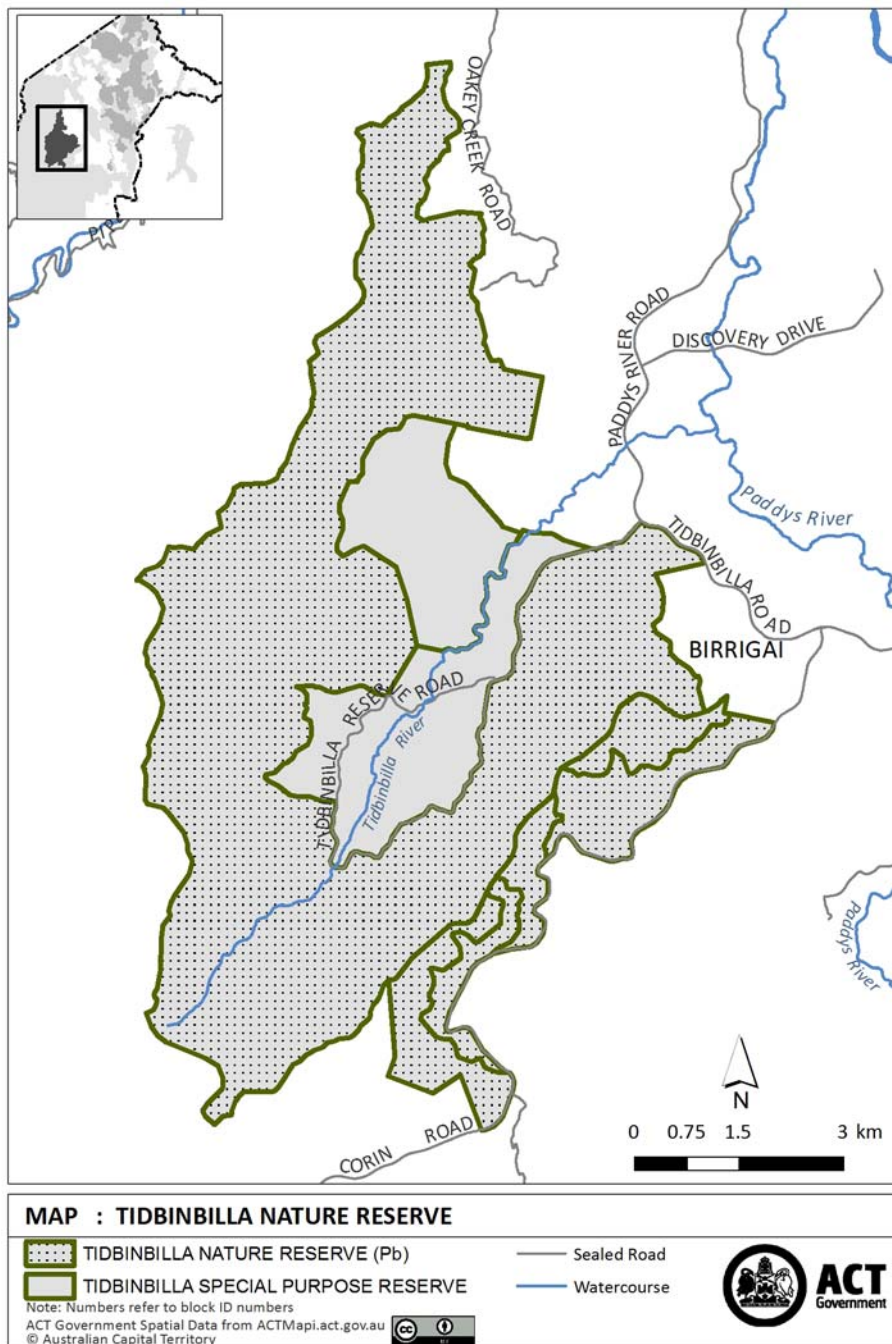
Schedule 1 Closed reserves

(see s 3)

column1 item	column 2 reserve	column 3 times when public access is prohibited
1	The area identified in schedule 2 known as Tidbinbilla Nature Reserve	17 February 2017
2	The area identified in schedule 3 known as Lower Molonglo River Corridor	17 February 2017
3	The area identified in schedule 4 known as Molonglo Gorge Nature Reserve	17 February 2017
4	The area identified in schedule 5 known as Mulligans Flat Woodland Sanctuary	17 February 2017

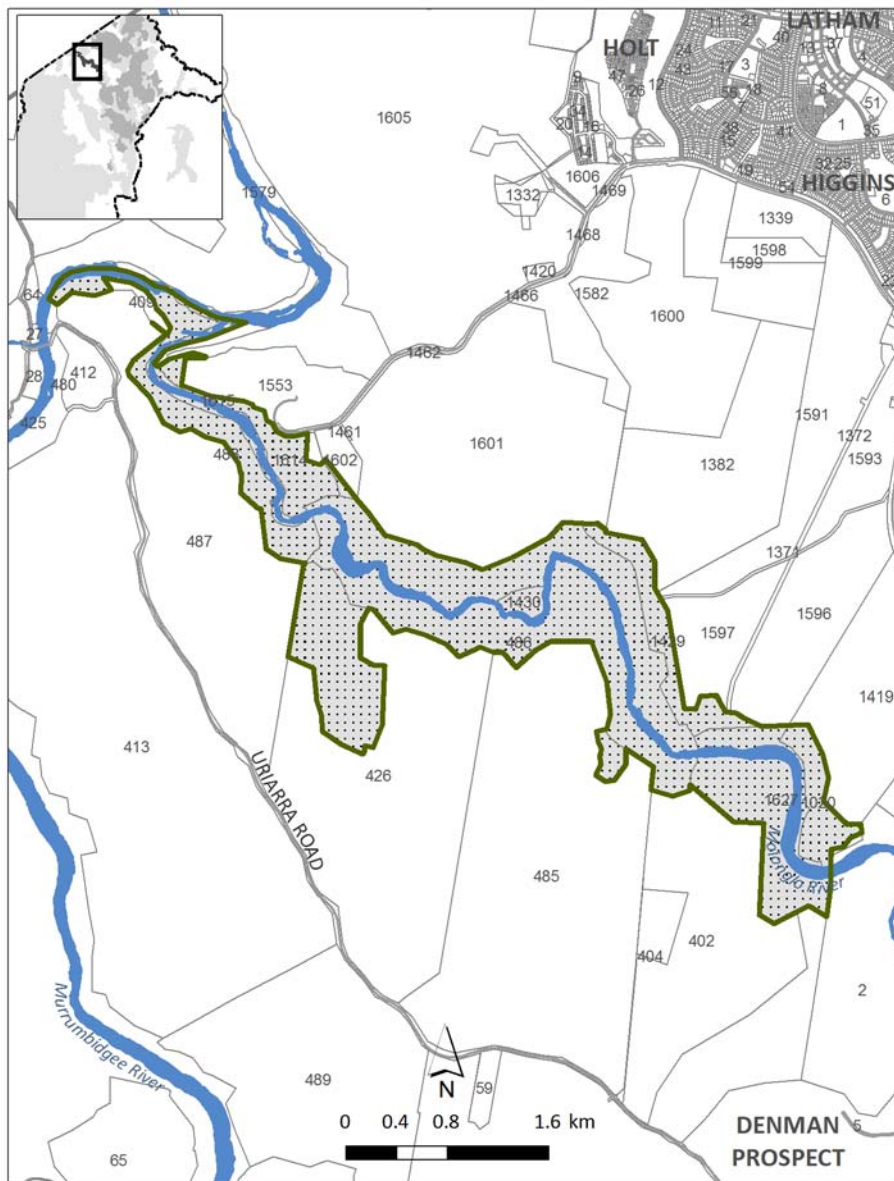
Schedule 2 Tidbinbilla Nature Reserve

(see sch 1 item 1)



Schedule 3 Lower Molonglo River Corridor

(see sch 1 item 2)



MAP : LOWER MOLONGLO RIVER CORRIDOR

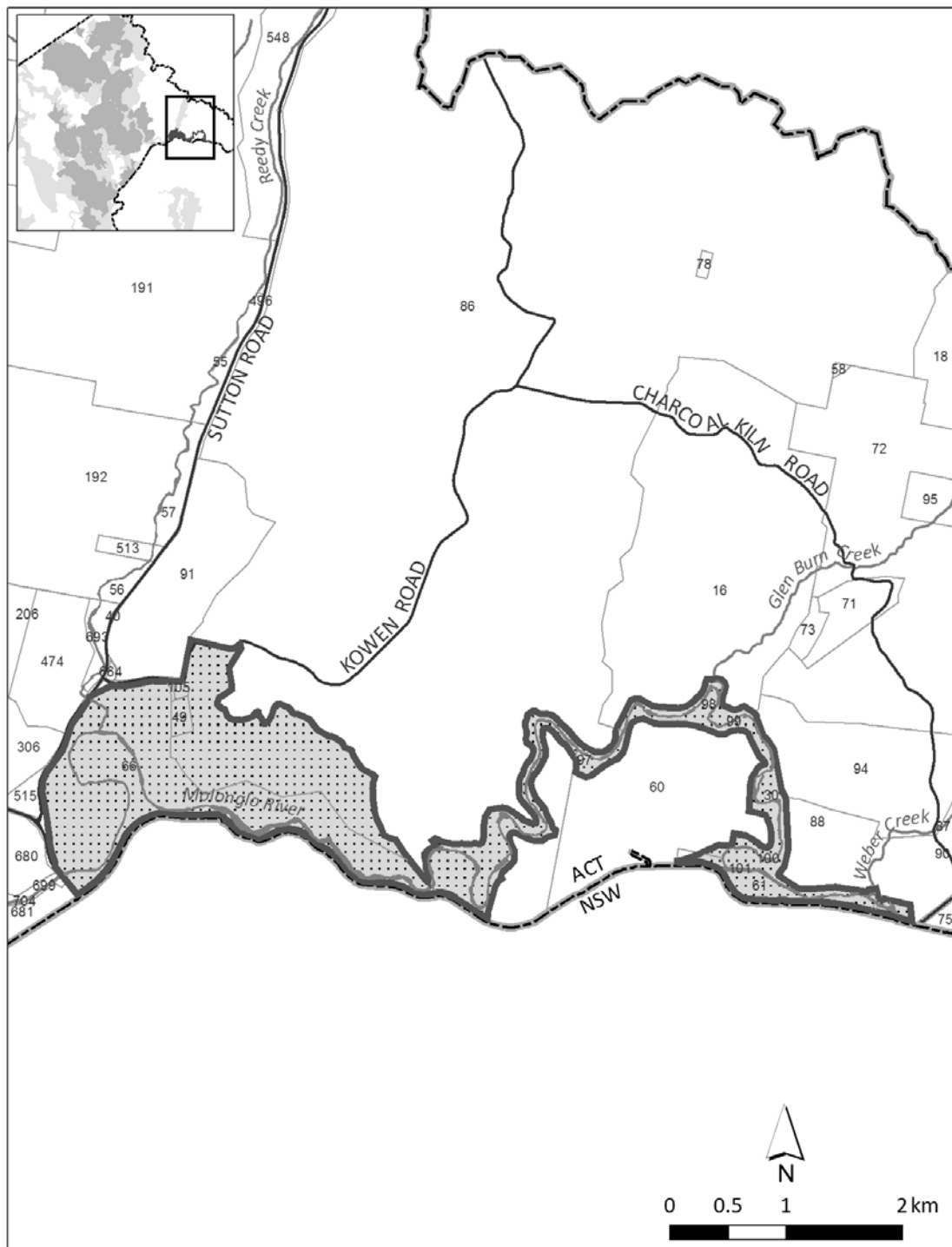
Nature Reserve (Pc)
 Sealed Road
 Watercourse

Note: Numbers refer to block ID numbers
 ACT Government Spatial Data from ACTMapi.act.gov.au
 © Australian Capital Territory







Schedule 4 Molonglo Gorge Nature Reserve

(see sch 1 item 3)



MAP : MOLONGLO GORGE NATURE RESERVE, KOWEN

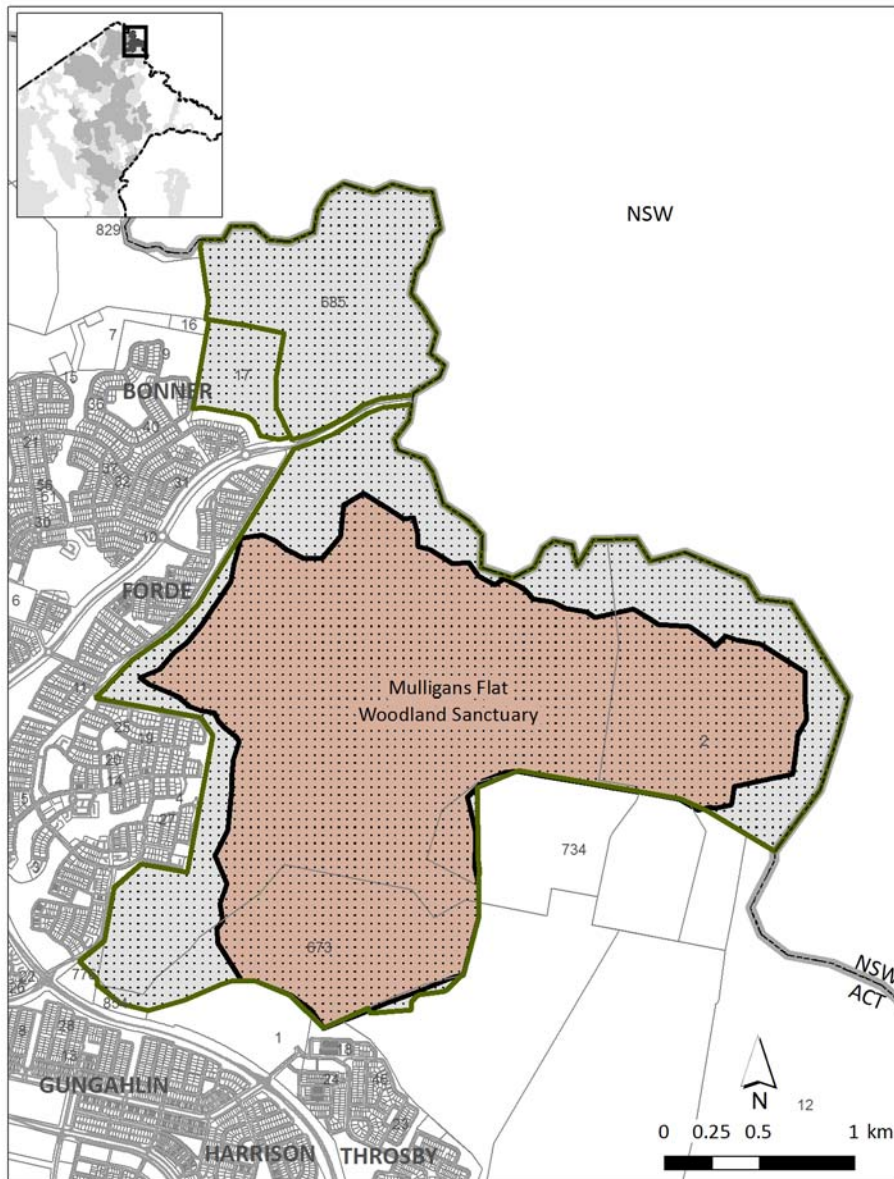
-  Nature Reserve (Pc)
-  Sealed Road
-  ACT/NSW border
-  River / Creek

Note: Numbers refer to block ID numbers
Interactive maps are available at www.actmapi.act.gov.au



Schedule 5 Mulligans Flat Woodland Sanctuary

(see sch 1 item 4)



MAP : MULLIGANS FLAT WOODLAND SANCTUARY

Mulligans Flat Nature Reserve (Pc)
 Mulligans sanctuary fence
 Sealed Road

--- ACT/NSW border

Note: Numbers refer to block ID numbers

ACT Government Spatial Data from ACTMapi.act.gov.au

© Australian Capital Territory

