

Planning and Development (Draft Variation No 360) Consultation Notice 2018

Notifiable instrument NI2018—645

made under the

Planning and Development Act 2007, s 63 (Public consultation—notification) and s 64 (Public consultation—notice of interim effect etc)

1 Name of instrument

This instrument is the *Planning and Development (Draft Variation No 360) Consultation Notice 2018*.

2 Draft variation to the Territory Plan

The planning and land authority (the *Authority*) has prepared the draft plan variation set out in the schedule and named *draft plan variation No 360 –Molonglo River Reserve: Changes to the public land reserve overlay boundaries and a minor zone adjustment (draft variation)*.

Note The draft variation is to vary the Territory Plan. In summary, the draft variation proposes to vary the public land reserve overlay boundaries and make a minor zoning adjustment to align the Territory Plan map with the Molonglo River Reserve Draft Reserve Management Plan boundaries.

3 Documents available for public inspection

- (1) The Authority gives notice that the draft variation is available for public inspection and purchase.
- (2) Copies of the document mentioned in section 3 (1) are available for inspection and purchase at Access Canberra, Environment, Planning and Sustainable Development Directorate Shopfront, Ground Floor South, Dame Pattie Menzies House, 16 Challis Street, Dickson, Monday to Friday (except public holidays) between 8:30am and 4:30pm for the period commencing on the day this notice commences and ending on 01 February 2019 (the *Consultation Period*).
- (3) Copies of the document mentioned in section 3 (1) are also available for inspection during the Consultation Period online at http://www.planning.act.gov.au/tools_resources/legislation_plans_registers/plans/territory_plan/draft_variations_to_the_territory_plan

4 Invitation to give written comments

- (1) The Authority invites written comments about the draft variation during the Consultation Period. Comments should include reference to the draft variation and be addressed to the Territory Plan Section of the Environment, Planning and Sustainable Development Directorate (*EPSDD*). Please also provide your name and contact details to assist in the assessment of the comments provided and to enable the Authority to contact you in relation to your comments, if required.
- (2) Written comments should be provided to the Authority by:
 - (a) email to terrplan@act.gov.au; or
 - (b) mail to Territory Plan Section, EPSDD, GPO Box 158, Canberra, ACT 2601; or
 - (c) hand delivery to Access Canberra, EPSDD Shopfront, Ground Floor South, Dame Pattie Menzies House, 16 Challis Street, Dickson.

5 Public inspection of written comments

- (1) Copies of written comments about the draft variation given in response to the invitation in section 4, or otherwise, or received from the National Capital Authority, will be available (unless exempted) for public inspection for a period of at least 15 working days starting 10 working days after the day the consultation period ends, at Access Canberra, EPSDD Shopfront, Ground Floor South, Dame Pattie Menzies House, 16 Challis Street, Dickson, Monday to Friday (except public holidays) between 8:30am and 4:30pm and may be published on the EPSDD website at www.planning.act.gov.au.
- (2) You may apply under section 411 of the *Planning and Development Act 2007* (the *Act*) for part of your consultation comments to be excluded from being made available to the public. A request for exclusion under this section must be in writing, clearly identifying what you are seeking to exclude and how the request satisfies the exclusion criteria. Please note that your name and contact details and other personal information will not be made public unless you request otherwise.

Note Personal information will be managed in accordance with the *Information Privacy Act 2014* and the *EPSDD Information Privacy Policy*, which are available through the EPSDD website.

6 Effect of the draft variation

- (1) Section 65 of the Act applies to the draft variation. This means that the provisions of the draft variation have interim effect, and apply to development applications lodged on or after 23 November 2018.
- (2) During the period of interim effect, the Territory, the Executive, a Minister or a territory authority must not do or approve the doing of anything that would be inconsistent with the Territory Plan if it were varied in accordance with the draft variation. Where there is an inconsistency between provisions in the current Territory Plan and provisions in the draft variation, then the draft variation takes precedence for the extent of the inconsistency.

- (3) Interim effect will end on the day the earliest of the following happens:
- (a) the day the public availability notice under section 70 for the draft variation being recommended to the Minister is notified in accordance with the *Legislation Act 2001*;
 - (b) the day the draft variation, or the corresponding variation, is withdrawn under section 68 (1) (b) or section 76 (2) (b) (v) of the Act;
 - (c) 1 year after the date of the consultation notice.

7 Obtaining further information

Further information about the draft variation can be obtained through email correspondence with the Territory Plan Section, EPSDD, at terrplan@act.gov.au. A reference to the draft variation should be included in any email.

8 Dictionary

In this instrument:

draft plan variation No 360 – Molonglo River Reserve: Changes to public land reserve overlay boundaries and a minor zone adjustment means the draft plan variation in the schedule.

Kathy Cusack
Delegate of the planning and land authority
20 November 2018



ACT
Government

Environment, Planning and
Sustainable Development

Planning and Development Act 2007

Draft
Variation to the
Territory Plan
No 360

Molonglo River Reserve:
Changes to public land reserve overlay
boundaries and a minor zone adjustment

November 2018

Draft variation for public consultation prepared
under s60 of the *Planning and Development Act 2007*

This page is intentionally blank.

Contents

1.	INTRODUCTION	1
1.1	Summary of the Proposal	1
1.2	Outline of the process	1
1.3	This document.....	2
1.4	Public Consultation.....	2
2.	EXPLANATORY STATEMENT.....	4
2.1	Background	4
2.2	Current Territory Plan Provisions	7
2.3	Proposed Changes to the Territory Plan	9
2.4	Reasons for the Proposed Draft Variation	11
2.5	Planning Context.....	11
2.5.1	National Capital Plan	11
2.5.2	ACT Planning Framework.....	11
2.6	Interim Effect	13
2.7	Consultation with Government Agencies.....	13
3.	DRAFT VARIATION.....	18
3.1	Variation to the Territory Plan.....	18

This page is intentionally blank.

1. INTRODUCTION

1.1 Summary of the Proposal

This draft variation proposes to make changes to the public land reserve overlay boundaries and a minor zone adjustment on the Territory Plan Map for the area of the Molonglo River Reserve. These amendments are necessary in order to align the Territory Plan Map with the provisions in the Molonglo River Reserve – Reserve Management Plan. The changes will fulfil the requirements for the Reserve Management Plan to be finalised and take effect.

1.2 Outline of the process

The Commonwealth's *Australian Capital Territory (Planning and Land Management) Act 1988* allows for the Legislative Assembly to make laws to establish a Territory Planning Authority and for that Authority to prepare and administer a Territory Plan. The *Planning and Development Act 2007* (the Act) establishes the planning and land authority as the Authority which prepares and administers the Territory Plan, including continually reviewing and proposing amendments as necessary. The functions of the planning and land authority are administered by the Environment, Planning and Sustainable Development Directorate (EPSDD).

The Territory Plan is comprised of a written statement and a map. The written statement contains a number of parts, namely governance; strategic directions; zones (including objectives and development tables and zone or centre development codes); precinct codes; general codes; overlays; definitions; structure plans, concept plans and development codes for future urban areas.

The Territory Plan Map graphically represents the applicable land use zones (under the categories of residential, commercial, industrial, community facility, urban parks and recreation, transport and services and non-urban), precincts and overlays. The zone, precinct and overlay requirements are detailed in the volumes of the Territory Plan.

Draft variations to the Territory Plan are prepared in accordance with the Act. Following the release of the draft variation under section 63 of the Act, submissions from the public are invited. At the conclusion of the consultation period the EPSDD submits a report on consultation and a recommended final variation to the Minister responsible for planning for referral to the Legislative Assembly standing committee responsible for planning.

The Minister must consider the findings of the committee before deciding whether to approve the draft variation. If the Minister approves the variation, the variation and associated documents will be tabled in the Legislative Assembly. Unless disallowed by the Legislative Assembly within five sitting days, the variation commences on a day nominated by the Minister.

1.3 This document

This document contains the background information in relation to the proposed variation. It comprises the following parts

Part 1 This Introduction

Part 2 An Explanatory Statement, which gives reasons for the proposed variation and describes its effect

Part 3 The Draft Variation, which details the precise changes to the Territory Plan that are proposed.

1.4 Public Consultation

Written comments about the draft variation are invited from the public by Friday 01 February 2019.

Comments should include reference to the draft variation and be addressed to the Territory Plan Section. Please also provide your name and contact details to assist in the assessment of the comments provided, and to enable EPSDD to contact you in relation to your comments, if required. Your personal information will be managed in accordance with the *Information Privacy Act 2014* and the EPSDD Information Privacy Policy, which is available for viewing on EPSDD's website.

Comments can be:

- emailed to terrplan@act.gov.au
- mailed to Territory Plan Section, GPO Box 158, Canberra, ACT 2601
- delivered to the Access Canberra Customer Service Centre at 16 Challis Street, Dickson

Copies of written comments will be made available for public inspection for no less than 15 working days starting 10 working days after the closing date for comment. The comments will be available at the Access Canberra customer service centre in Dickson and may be published on EPSDD's website. Comments made available will not include personal contact details unless you request otherwise.

A request may be made for parts of a submission to be excluded under section 411 or 412 of the *Planning and Development Act 2007*. A request for exclusion under these sections must be in writing, clearly identifying what parts of your submission you are seeking to exclude and how the request satisfies the exclusion criteria.

Further Information

The draft variation and background documents are available online at **www.act.gov.au/draftvariations** until the closing date for written comments.

Printed copies of the draft variation (this document) and background documents are available for inspection and purchase at the Access Canberra Customer Service Centre, 16 Challis Street, Dickson, Monday to Friday (except public holidays) between 8:30am and 4:30pm. Please call 6207 1923 to arrange a copy for purchase.

2. EXPLANATORY STATEMENT

2.1 Background

The Molonglo River Reserve (the Reserve) is a new reserve that follows the Molonglo River from Scrivener Dam downstream to the intersection with the Murrumbidgee River Corridor Reserve. It includes three current reserves – Kama Nature Reserve, Lower Molonglo River Corridor Nature Reserve and Molonglo River Special Purpose Reserve, and brings them together with some new areas to create the Molonglo River Reserve. The Molonglo River Park in East Molonglo is also included in the Reserve.

The Reserve has high conservation value and will also be a central landscape feature and recreation destination for residents of the Molonglo Valley urban development area.

Section 315 of the *Planning and Development Act 2007* (the Act) provides for the reservation of public land for a range of purposes and objectives for management. These public land reserve areas are shown on the Territory Plan Map by way of public land reserve overlays and cover wilderness areas, national parks, nature reserves, and sport and recreation reserves to name a few. The draft Management Plan for the Molonglo River Reserve is a statutory plan required under the Act and defined as a ‘reserve management plan’ in the *Nature Conservation Act 2014*. Its purpose is to give clear direction on how the biodiversity, land and waters of the Molonglo River Reserve will be used and managed to satisfy both nature conservation and recreation objectives.

The Molonglo River Reserve Draft Reserve Management Plan (the Plan) was released for public consultation from 8 February 2018 until 23 March 2018. All submissions were considered and the Plan was revised in response to the comments received.

Draft Variation to the Territory Plan No. 360 (DV360) has been prepared in response to a request by the Conservator of Flora and Fauna to amend the Molonglo River Reserve public land reserve overlay boundaries for the area of the reserve. The changes to the type and location of the public land reserve overlay boundaries on the Territory Plan map are to ensure they align with the requirements in the Plan for the particular uses assigned to the land within the reserve corridor.

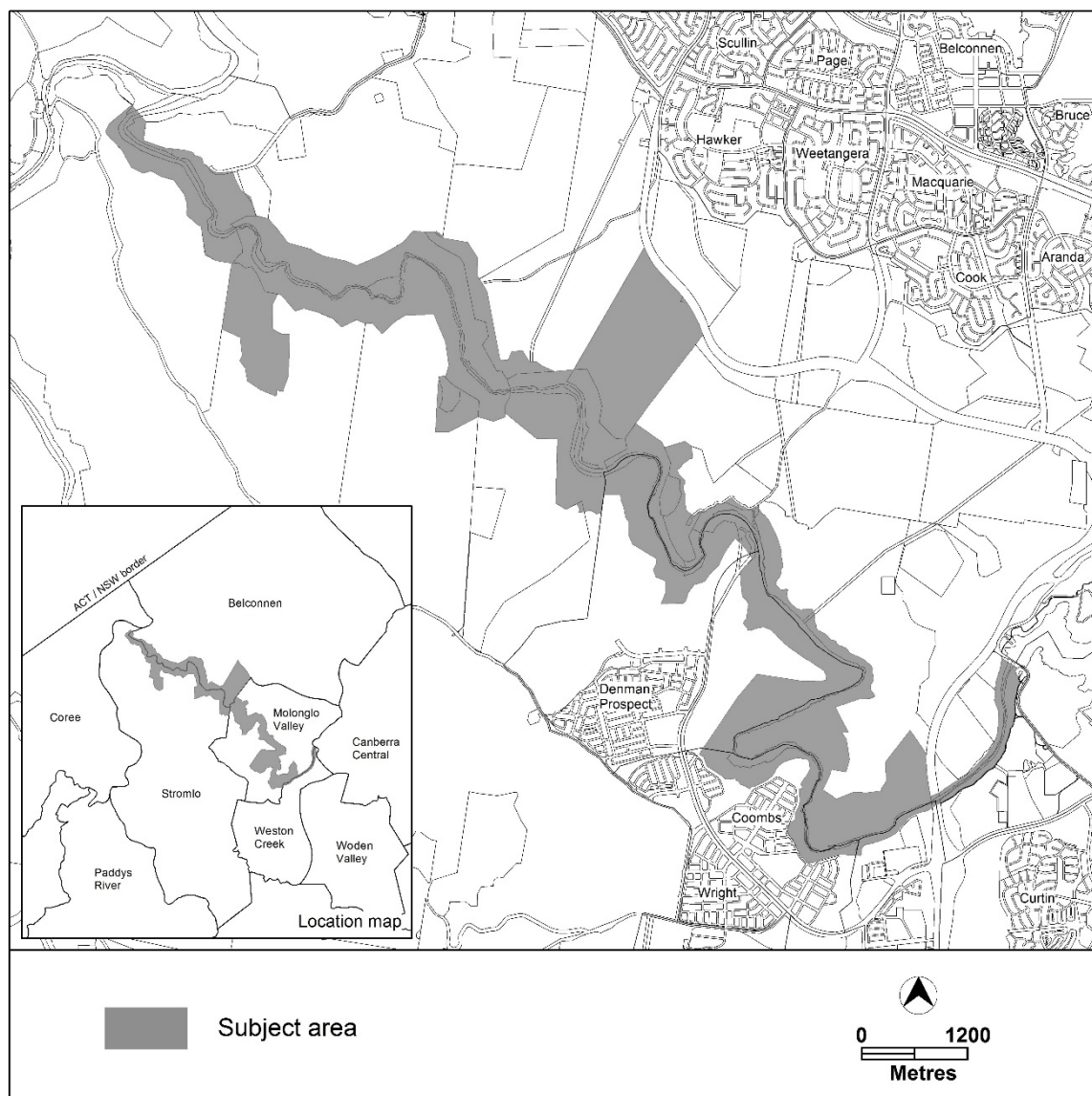
The change to the boundaries also reflects the outcomes of the Molonglo Valley Strategic Assessment for the Molonglo River Reserve which was undertaken by the ACT Government in 2010. The assessment process resulted in the approval of the Molonglo Valley Plan for the Protection of Matters of National Environmental Significance (NES Plan) in December 2011 by the Commonwealth Minister for the Environment. The NES Plan details the ACT Government's commitments to protect matters of national significance within the strategic assessment area.

The Plan provides for the Molonglo River Reserve to be predominantly nature reserve, with two areas of special purpose reserve where recreational activities will be located. This is to ensure that areas of high conservation value are protected into the future in accordance with the NES Plan.

In order to finalise the Plan, the public land reserve overlay provisions need to be amended to comply with the legislative requirement that the Plan describes how the planning and development objectives for the reserve are to be implemented or promoted in the reserve. The management objectives as provided by the *Planning and Development Act 2007* for an area of nature reserve is to conserve the natural environment, and to provide for public use of the area for recreation, education and research, whereas the objectives for special purpose reserve are to provide for public and community use of the area for recreation and education. The corresponding public land reserve overlays shown on the Territory Plan Map for these areas are 'Pc – a nature reserve' and 'Pd – a special purpose reserve' respectively.

The Conservator of Flora and Fauna has also requested that the proposed changes incorporate part of Block 485 Stromlo into the reserve system as it contains an important Aboriginal cultural site. It is proposed to include the block under the public land reserve 'Pc – a nature reserve' overlay on the Territory Plan Map so that it can be managed in accordance with the Plan that covers the area. The Conservator has also requested that the subject land be rezoned from non-urban zone NUZ2 Rural zone to NUZ4 River Corridor zone in this location to better reflect the management of the area as part of the Molonglo River Reserve.

The changes proposed in this draft variation will fulfil the requirements for the Plan to be finalised and take effect.



Location Plan

2.2 Current Territory Plan Map

The current Territory Plan map shows the existing zones and public land overlays applying to the land subject to this draft variation.

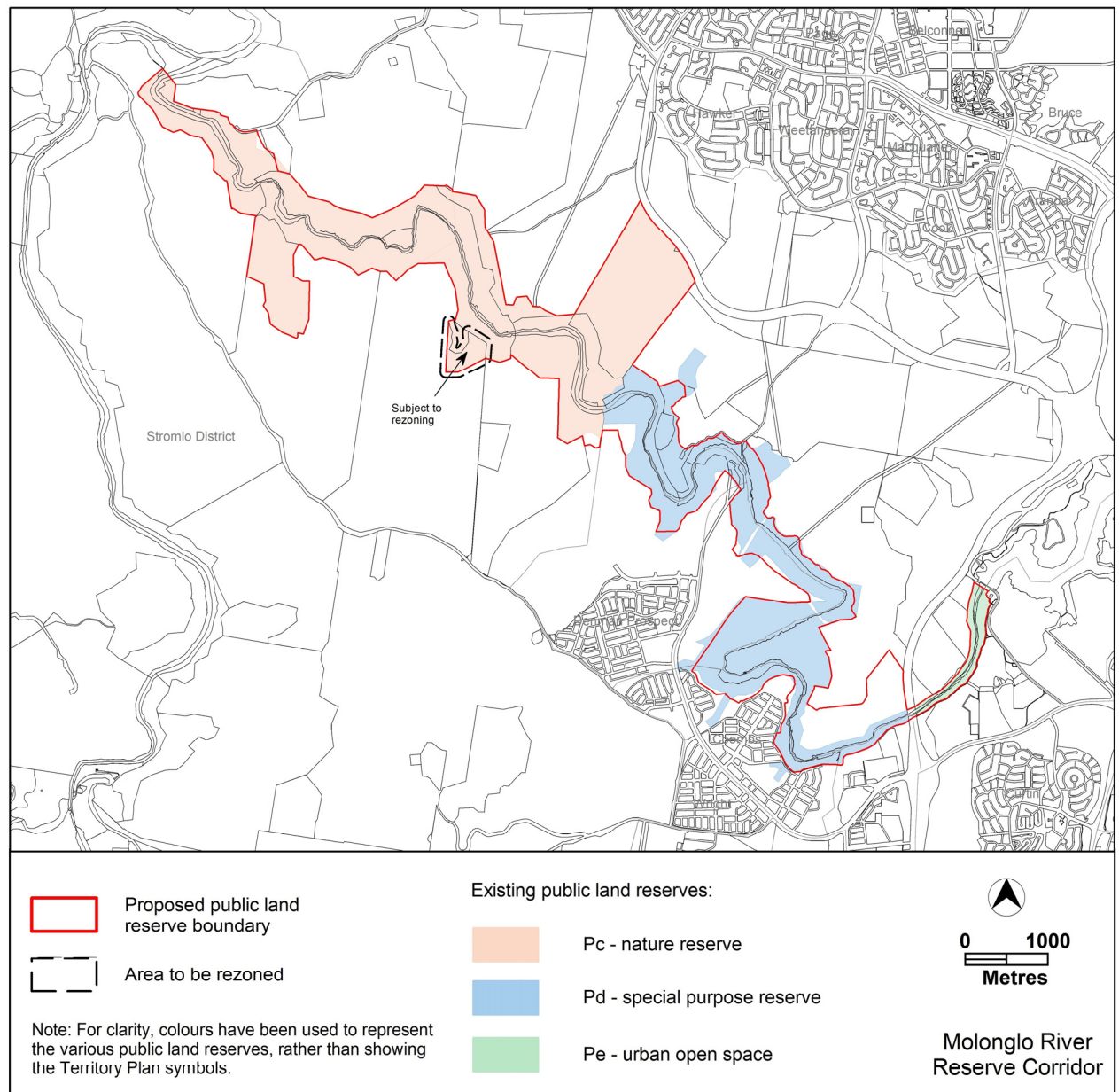


Figure 1 Current Territory Plan Map using colours for information purposes

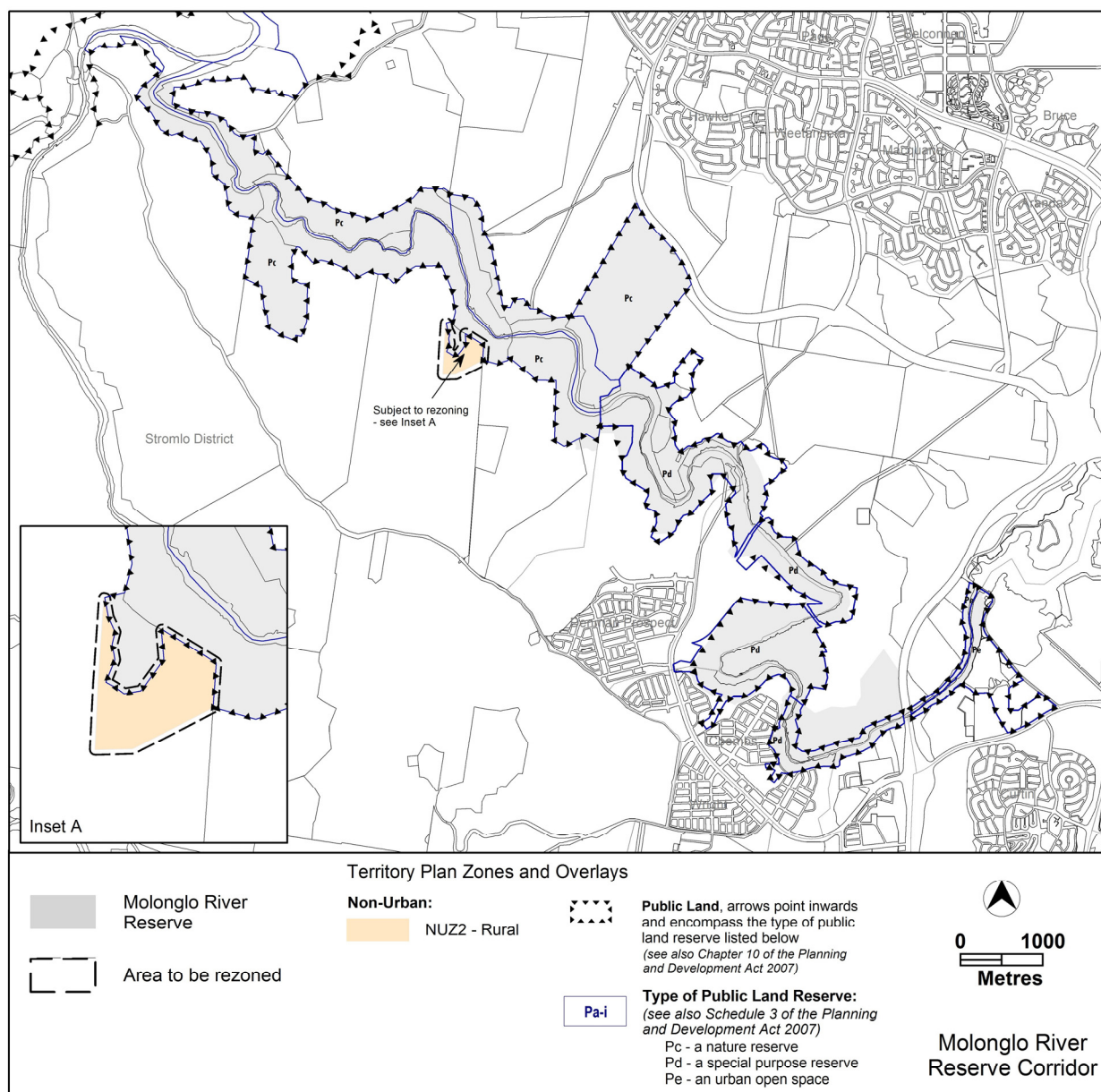


Figure 2 Existing Territory Plan Map using symbols as per Map legend

2.3 Proposed Changes to the Territory Plan Map

DV360 proposes to amend the Territory Plan Map as follows:

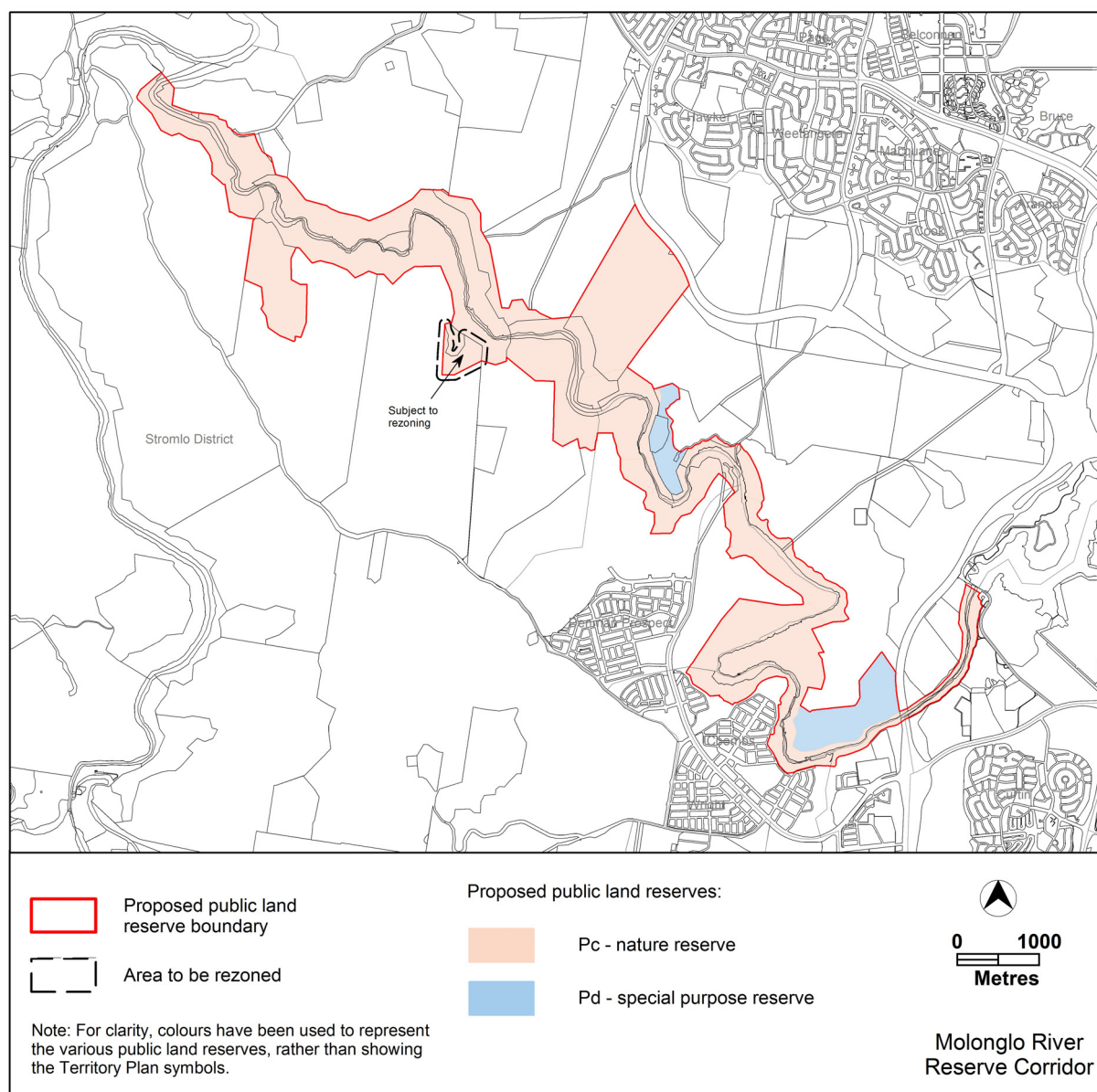


Figure 3 Proposed Territory Plan Map changes using colours for information purposes

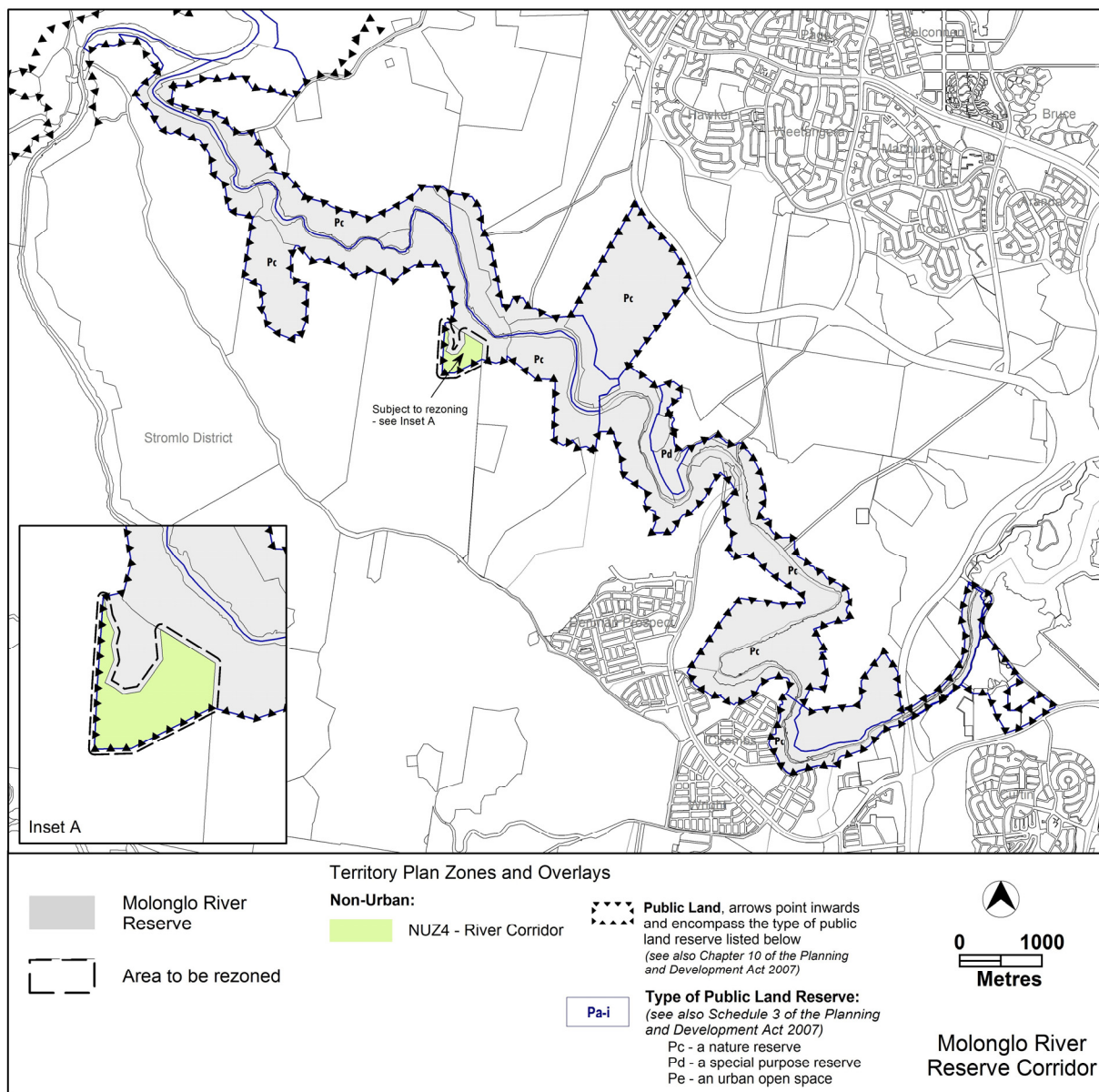


Figure 4 Proposed Territory Plan Map using symbols as per Map legend

2.4 Reasons for the Proposed Draft Variation

The reasons for the draft variation are as follows:

- To align the public land reserve overlay boundaries and zones on the Territory Plan Map with the boundaries for the Molonglo River Reserve (the Reserve) that are subject to the Management Plan (the Plan) for the Reserve.
- To ensure that by changing the public land reserve overlays and zone adjustment in line with the boundaries of the Reserve, the Plan meets the management objectives for the areas of nature reserve and special purpose reserve as required under the *Planning and Development Act 2007*.
- To apply interim effect to the public land reserve overlay and zone changes so that the Plan can be finalised and take effect.

2.5 Planning Context

2.5.1 National Capital Plan

The *Australian Capital Territory (Planning and Land Management) Act 1988* established the National Capital Authority (NCA) with two of its functions being to prepare and administer a National Capital Plan (NCP) and to keep the NCP under constant review and to propose amendments to it when necessary.

The NCP, which was published in the Commonwealth Gazette on 21 January 1990 is required to ensure that Canberra and the Territory are planned and developed in accordance with their national significance. The *Planning and Land Management Act 1988* also required that the Territory Plan is not inconsistent with the NCP.

2.5.2 ACT Planning Framework

Statement of Strategic Directions

The Statement of Strategic Directions sets out the principles for giving effect to the main objective of the Territory Plan as required by the *Planning and Development Act 2007*. The proposal is consistent with the following Territory Plan - Statement of Strategic Directions in terms of environmental, economic and social sustainability and spatial planning and urban design principles:

1. Principles for Sustainable Development

General Principles

- 1.3 Economic, social and environmental objectives will be pursued in a balanced and integrated way, having regard to both short-term and long-term factors, such that present needs can be met without prejudicing the

welfare of future generations, and without serious or irreversible loss of life-supporting natural resources or damage to the environment.

Environmental Sustainability

- 1.5 Planning policies will seek to ensure the efficient use of all resources and to reduce consumption of non-renewable resources. Waste minimisation, reuse and recycling will be encouraged, whilst energy-rating and conservation measures will be applied wherever appropriate, particularly in transport, subdivision planning, and building design and construction.
- 1.6 The pattern of development is to reflect land capability constraints resulting from topography, soils, geotechnical factors, drainage, natural hazards, microclimate and the sensitivity of ecosystems. Particular attention will be given to the need to conserve soil, water and vegetation; maintain biological diversity; safeguard important ecosystems and ecological processes; and provide and protect wildlife corridors.
- 1.7 Land and water resources will be planned in accordance with the principles of integrated catchment management and water sensitive urban design. Policies will seek to protect identified environmental values, whilst focusing on opportunities for multi-purpose use of resources. Special attention is to be given to protecting sources of the Territory's water supply and to maintaining environmental flows in rivers and streams.
- 1.8 Planning policies will provide for the sustainable management of rural areas, ensuring that rural lands nominated for future urban development or other purposes can be retained in productive use and properly managed for the time being. Appropriate activities to reduce net greenhouse gas emissions will be encouraged.
- 1.9 Urban expansion will be contained in order to minimise impacts on valuable natural and rural areas.

Social Sustainability

- 1.25 Heritage and cultural values will be safeguarded, including in particular those of the Territory's Aboriginal peoples and those derived from both its rural history and urban development as the National Capital.

The distinctive qualities of residential areas and other places, as well as elements of community heritage, will also be recognised and their conservation promoted.
- 1.26 Identified places of heritage significance will be protected in accordance with requirements for their conservation contained in the Heritage Register and any relevant heritage guidelines under the Heritage Act 2004. Special provisions are included in the Heritage Act for the recognition, registration and conservation of Aboriginal heritage.

2. Spatial Planning and Urban Design Principles

Non-urban Areas

- 2.11 Planning policies will protect the landscape and environmental qualities of the hills and ridges surrounding urban areas, the Murrumbidgee and other river corridors, the mountains and forests west of the Murrumbidgee River, and productive rural landscapes.

ACT Planning Strategy 2012

The draft variation is also consistent with the ACT Planning Strategy 2012 Strategy 8 to “Value the land and natural resources of the region by working collaboratively to manage urban growth, ensure connectivity and continuity in the natural systems and conserve, where appropriate, agriculturally productive land.”

2.6 Interim Effect

Section 65 of the *Planning and Development Act 2007* applies to the draft variation. This means that the provisions of Draft Variation No 360 have interim effect, and apply to the subject area from 23 November 2018.

During the period of interim effect the ACT Government must not do or approve anything that would be inconsistent with the Territory Plan as if it were amended by the draft variation. Where there is an inconsistency between provisions in the current Territory Plan and provisions in the draft variation, then the draft variation takes precedence for the extent of the inconsistency.

Interim effect will end on the day the earliest of the following happens:

- i. the day the public availability notice under section 70 for the draft variation being recommended to the Minister is notified in accordance with the Legislation Act
- ii. the day the draft variation, or the corresponding variation, is withdrawn under section 68 (1)(b) or section 76 (3)(b)(v)
- iii. 1 year after the date of the consultation notice.

2.7 Consultation with Government Agencies

EPSDD is required to, in preparing a draft variation under section 61(b) consult with each of the following in relation to the proposed draft variation:

- the National Capital Authority
- the Conservator of Flora and Fauna
- the Environment Protection Authority
- the Heritage Council

- the Land Custodian, if the draft variation would, if made, be likely to affect unleased land or leased public land – each custodian for the land likely to be affected.

National Capital Authority

The National Capital Authority provided the following comments on 01 November 2018:

“Thank you for your invitation to make comment on DV360 to establish the Molonglo River Reserve (the reserve). The National Capital Authority (NCA) notes that the draft variation is required to address the inconsistencies between the draft reserve management plan for the reserve and the land uses currently shown on the Territory Plan. It is also noted that part of Block 485 Stromlo is proposed to be included in the reserve as it contains an important Aboriginal cultural site and this will be achieved by rezoning the area from NUZ2 Rural to NUZ4 River Corridor Zone. The draft variation also proposes to include public land overlays with the majority of the reserve having the overlay of nature reserve and two separate areas are proposed as special purpose reserve.

The majority of the new reserve is within the ‘National Capital Open Space System (River Corridor)’ as shown on the ‘General Policy Plan - Metropolitan Canberra’ of the National Capital Plan (the Plan). For this land, the proposed variations appear to be not inconsistent with the ‘Land Use’ for ‘National Capital Open Space System (River Corridor)’ in the Plan. A Nature Conservation Area is a permitted use in River Corridors.

The special purpose reserve located to the west of the Tuggeranong Parkway is located within the ‘National Capital Open Space System (Hills, Ridges and Buffers).

For this land, the proposed variations appear to be not inconsistent with the ‘Land Use’ for ‘National Capital Open Space System (Hills, Ridges and Buffers)’.

Permitted uses are outlined in Section 3.2.4.4 of the Plan and include such uses as Outdoor Recreation Facility and Park which support the intent of a special purpose reserve. This land is also located in the Designated Area and detailed planning will be the responsibility of the NCA.

Kama Nature Reserve is located within the ‘National Capital Open Space System (Hills, Ridges and Buffers). For this land, the proposed variations appear to be not inconsistent with the ‘Land Use’ for ‘National Capital Open Space System (Hills, Ridges and Buffers)’ in the Plan. A Nature Conservation Area is a permitted use in Hills, Ridges and Buffers.

The small area to be rezoned from rural to river corridor is within 'Rural Areas'. A Nature Conservation Area is not listed as a permitted use however the NCA supports the intent of the rezoning as it meets the general principles for Rural Areas as described in Section 3.7 of the Plan. The distinctive rural character will be retained and the use of this land as reserve will not significantly diminish the National Capital landscape values. The NCA therefore has no objection to the proposed Territory Plan variation proceeding.

The NCA's preference is for land use boundaries of the National Capital Plan and the Territory Plan to align as much as possible. The NCA will consider a future amendment to the Plan to achieve this, and to align land use and reserve boundaries."

Response

The National Capital Authority's comments are noted.

Conservator of Flora and Fauna

The Conservator of Flora and Fauna made the following comments on 23 October 2018:

"In accordance with Section 61(b) of the Planning and Development Act 2007 I advise that I have examined Draft Variation No 360, Molonglo River Corridor Reserve: Changes to public land overlay boundaries and zones.

The variation is implementing changes to the boundaries of the Molonglo River Reserve, and the overlay provisions, as requested by myself to ensure that the reserve boundaries align with the Plan of Management that will be finalised in the near future. I have no comments to provide other than to note my support."

Response

The Conservator's comment of support is noted.

Environment Protection Authority

The Environment Protection Authority provided the following comments on 6 November 2018:

"Thank you for the opportunity to review and provide comment on the proposed Draft Variation to the Territory Plan No 360, to change public land overlay boundaries and zones in the Molonglo River Reserve.

Consistent with the approach taken for all areas within the Molonglo 2 and Molonglo 3 development areas where a change of land use is proposed the sites subject to the change of use must be assessed for potential contamination from past and present uses, remediated as required and the finding of the assessment independently audited by an Environment Protection Authority (EPA) approved environmental auditor.

The Auditor's site audit statement and report into the suitability of the site(s) for their proposed and permitted uses must be reviewed and endorsed by the EPA prior to the Territory Plan being varied."

Response

The Environment Protection Authority's comments are noted. The draft variation proposes to amend the public land reserve overlay in line with the reserve management plan to form the new Molonglo River Reserve.

In a number of locations, the extent of the Molonglo river corridor public land reserve overlay boundary has been reduced through this draft variation. Any issues regarding potential contamination of these sites that are now outside of the river corridor have either previously received EPA endorsement of an independent contamination audit or site audit statement and report, or will be addressed prior to any planning changes being made to the land (either by an amendment to the Territory Plan for a future urban area or through the estate development plan assessment process).

Any development proposed within the Molonglo River Reserve will seek EPA endorsement in accordance with due process.

ACT Heritage Council

The ACT Heritage Council provided the following comments on 23 October 2018:

"DV360 proposes to amend the Territory Plan Map to: increase the area of 'nature reserve' within the Molonglo River Corridor Reserve (modifying the Public Land Overlay); and rezone part of Rural Block 485, Stromlo to include this land as part of the Reserve. These amendments are proposed to address inconsistencies between the 'reserve management plan for the Molonglo River Reserve' and the land uses currently shown for the subject area on the Territory Map.

A large number of Aboriginal places and objects are located within the Molonglo River Corridor Reserve. The proposed changes to the Public Land Overlays, increasing the area of 'nature reserve', would facilitate continued management of these Aboriginal places as part of the Reserve.

Rural Block 485, Stromlo, contains two Aboriginal places known as MOL IF13 and STSTD-001. DV360 proposes to rezone part of this block from NUZ2 Rural to NUZ4 River Corridor. On 22 August 2018, the Council endorsed the proposed boundary realignment.

Advice:

For the reasons outlined above, the Council raises no objection to the proposed amendment of the Territory Plan (DV360)."

Response

The ACT Heritage Council's advice is noted.

Land Custodian (Parks and Conservation Service)

The land custodian for land affected by this draft variation is ACT Parks and Conservation Service (PCS). PCS provided the following comments on 6 November 2018:

The Parks and Conservation Service support **Draft Variation No. 360 - Changes to overlay boundaries of Molonglo River Reserve** which will formalise the boundaries of the new Molonglo River Reserve.

Formalisation of the boundaries will enable PCS to submit the Molonglo River Reserve final draft Reserve Management Plan to the Minister for approval in accordance with the *Nature Conservation Act 2014* and to meet the requirements of the Molonglo Valley Strategic Assessment (the NES Plan).

Response

The Parks and Conservation Service's comments are noted.

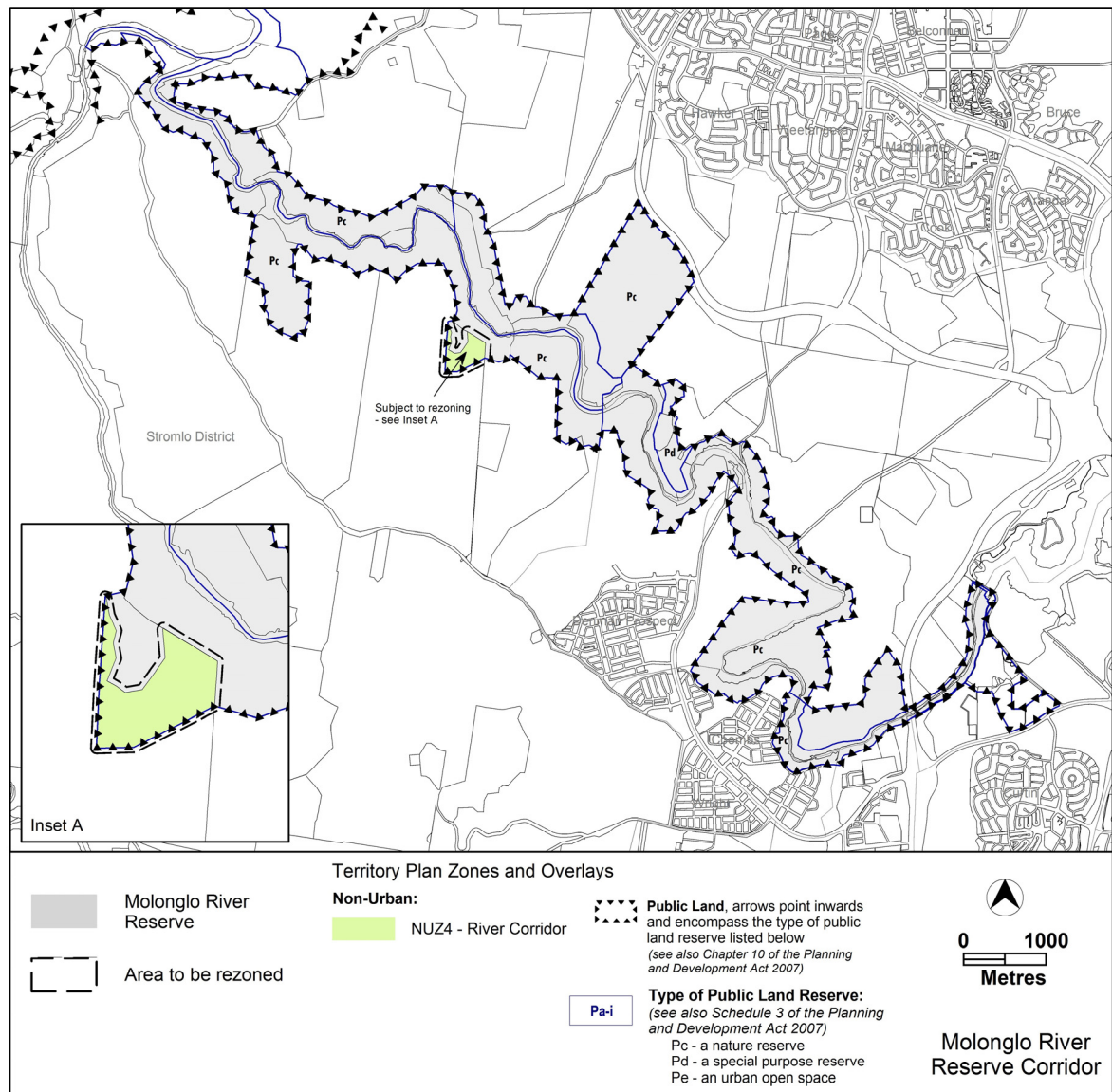
3. DRAFT VARIATION

3.1 Variation to the Territory Plan

The Territory Plan Map is varied in all of the following ways:

Variation to the Territory Plan Map

Substitute



Interpretation service

ENGLISH	If you need interpreting help, telephone:
ARABIC	إذا احتجت لمساعدة في الترجمة الشفوية ، إتصل برقم الهاتف :
CHINESE	如果你需要传译员的帮助，请打电话：
CROATIAN	Ako trebate pomoć tumača telefonirajte:
GREEK	Αν χρειάζεστε διερμηνέα τηλεφωνήστε στο
ITALIAN	Se avete bisogno di un interprete, telefonate al numero:
MALTESE	Jekk għandek bżonn l-għajnuna t'interpretu, ċempel:
PERSIAN	اگر به ترجمه شفاهی احتیاج دارید به این شماره تلفن کنید:
PORTUGUESE	Se você precisar da ajuda de um intérprete, telefone:
SERBIAN	Ако вам је потребна помоћ преводиоца телефонирајте:
SPANISH	Si necesita la asistencia de un intérprete, llame al:
TURKISH	Tercümana ihtiyacınız varsa lütfen telefon ediniz:
VIETNAMESE	Nếu bạn cần một người thông-ngôn hãy gọi điện-thoại:

TRANSLATING AND INTERPRETING SERVICE
131 450
Canberra and District - 24 hours a day, seven days a week