

Australian Capital Territory

Nature Conservation (Closed Reserves— Namadgi National Park and Bimberi Wilderness Area) Declaration 2020 (No 1)

Notifiable instrument NI2020–452

made under the

Nature Conservation Act 2014, s 259 (Conservator may close reserve)

1 Name of instrument

This instrument is the *Nature Conservation (Closed Reserves—Namadgi National Park and Bimberi Wilderness Area) Declaration 2020 (No 1)*.

2 Commencement

This instrument commences on the day after it is signed.

3 Declaration

- (1) I declare that public access to those parts of Namadgi National Park indicated in the map at schedule 1 is prohibited.
- (2) I declare that public access to those parts of Bimberi Wilderness Area indicated in the map at schedule 1 is prohibited.
- (3) Subsection (1) does not apply to Boboyan Road.
- (4) Subsections (1) and (2) do not apply to a conservation officer exercising a function under the act.

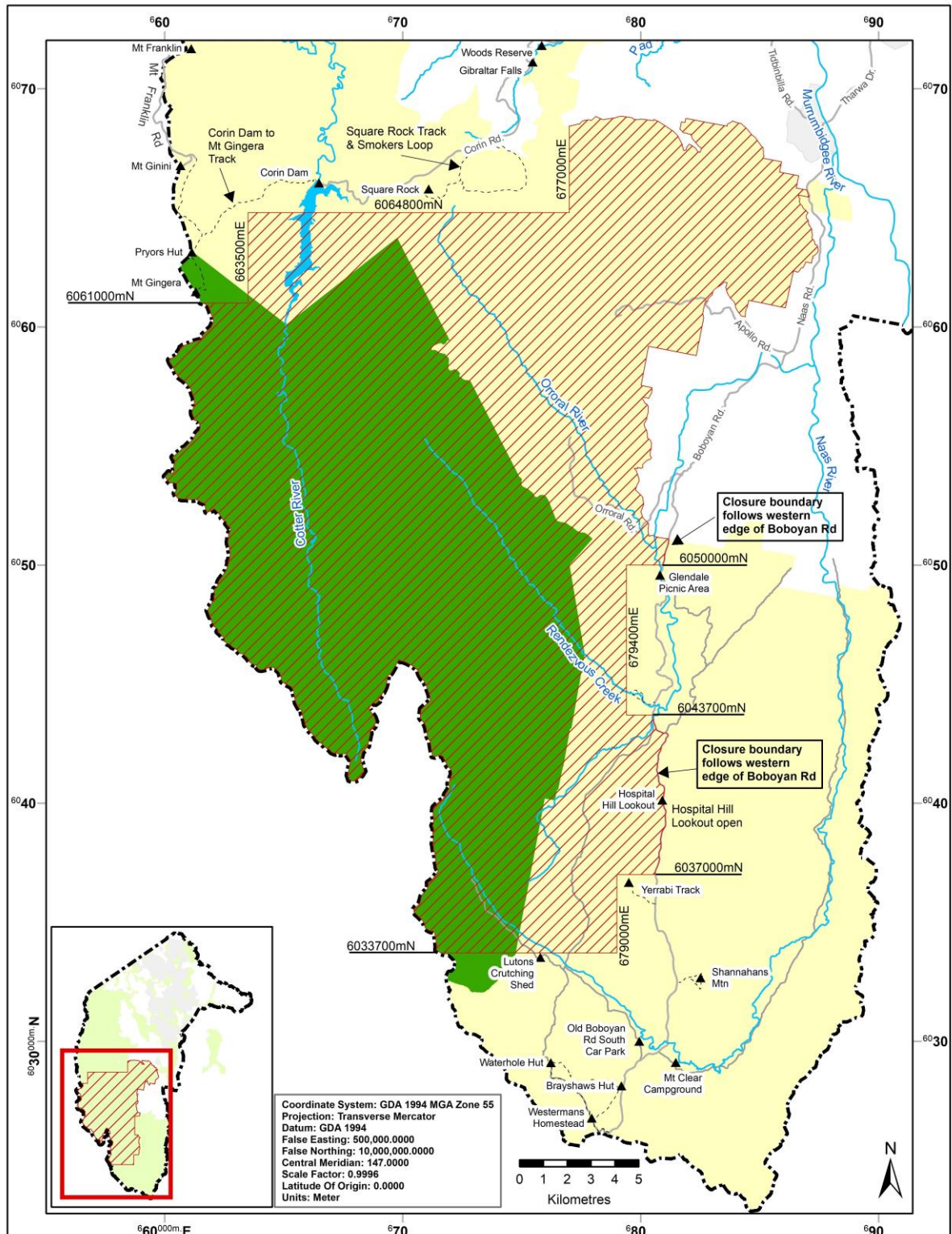
4 Revocation

The *Nature Conservation (Closed Reserve—Namadgi National Park) Declaration 2020 (No 2)* (NI2020-314) is revoked.

Ian Walker
Conservator of Flora and Fauna
23 July 2020

Schedule 1 Area closed to public access

(see s 3)



Legend

- Area Closed to Public Access
- Bimberi Wilderness
- Namadji National Park
- Walking Track
- Road
- ACT Border

ACT Government
ACT Government 22/07/2020