

Nature Conservation (Closed Reserves— Namadgi National Park and Bimberi Wilderness Area) Declaration 2020 (No 2)

Notifiable instrument NI2020–673

made under the

Nature Conservation Act 2014, s 259 (Conservator may close reserve)

1 Name of instrument

This instrument is the *Nature Conservation (Closed Reserves—Namadgi National Park and Bimberi Wilderness Area) Declaration 2020 (No 2)*.

2 Commencement

This instrument commences on the day after it is signed.

3 Declaration

- (1) I declare that public access to those parts of Namadgi National Park indicated in the map at schedule 1 is prohibited.
- (2) I declare that public access to those parts of Bimberi Wilderness Area indicated in the map at schedule 1 is prohibited.

4 Exceptions

- (1) Section 3 (1) does not apply to Boboyan Road.
- (2) Section 3 (1) and (2) does not apply to:
 - (a) a conservation officer exercising a function under the *Nature Conservation Act 2014* (the *Act*) within the closed reserves;
 - (b) a contractor or volunteer engaged by the ACT Government to undertake works within the closed reserves;
 - (c) an employee of a utility provider with assets within the closed reserves; or
 - (d) an individual who holds a nature conservation licence issued under the Act to undertake an activity within the closed reserves.

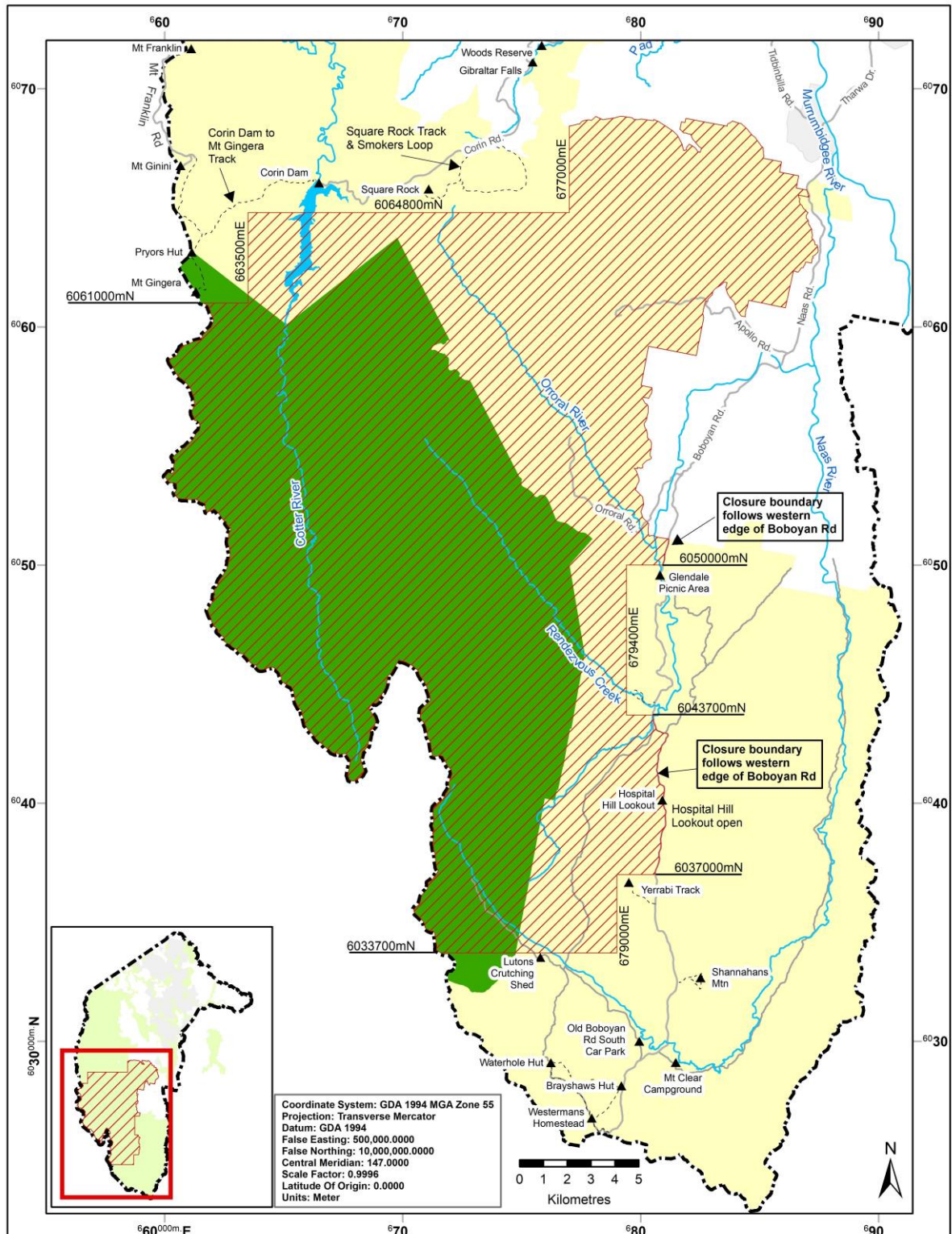
5 Revocation

The Nature Conservation (Closed Reserves—Namadgi National Park and Bimberi Wilderness Area) Declaration 2020 (No 1) (NI2020-452) is revoked.

Ian Walker
Conservator of Flora and Fauna
14 October 2020

Schedule 1 Area closed to public access

(see s 3)



Legend

- Area Closed to Public Access
- Bimberi Wilderness
- Namadji National Park
- Walking Track
- Road
- ACT Border

ACT Government
 ACT Government 22/07/2020