

Nature Conservation (Closed Reserves) Declaration 2021 (No 3)

Notifiable instrument NI2021–359

made under the

Nature Conservation Act 2014, s 259 (Conservator may close reserve)

1 Name of instrument

This instrument is the *Nature Conservation (Closed Reserves) Declaration 2021 (No 3)*.

2 Commencement

This instrument commences on 21 June 2021.

3 Declaration

- (1) I declare that public access to those parts of Bullen Range Nature Reserve indicated in the map at schedule 1 is prohibited.
- (2) I declare that public access to those parts of Molonglo River Reserve indicated in the map at schedule 2 is prohibited.
- (3) I declare that public access to those parts of Namadgi National Park indicated in the map at schedule 3 is prohibited.

4 Exceptions

Section 3 does not apply to:

- (a) a conservation officer exercising a function under the Act; or
- (b) a person who is licensed under the Act to conduct activities in relation to the management of pest animals within the closed reserves.

5 Expiry

This instrument expires on 25 June 2021.

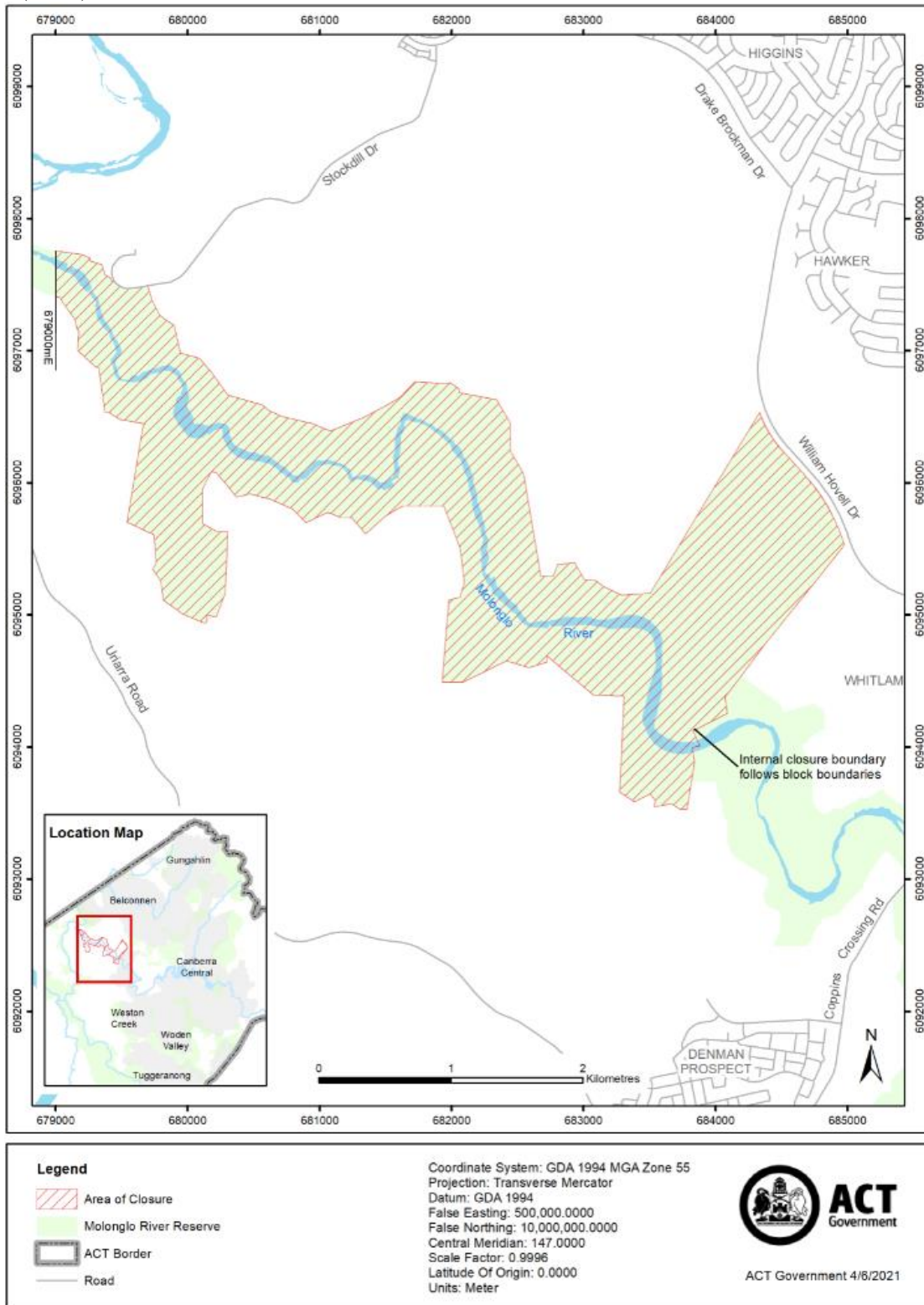
6 Definitions

Pest animal has the same meaning as in the *Pest Plants and Animals Act 2005*.

Ian Walker
Conservator of Flora and Fauna
16 June 2021

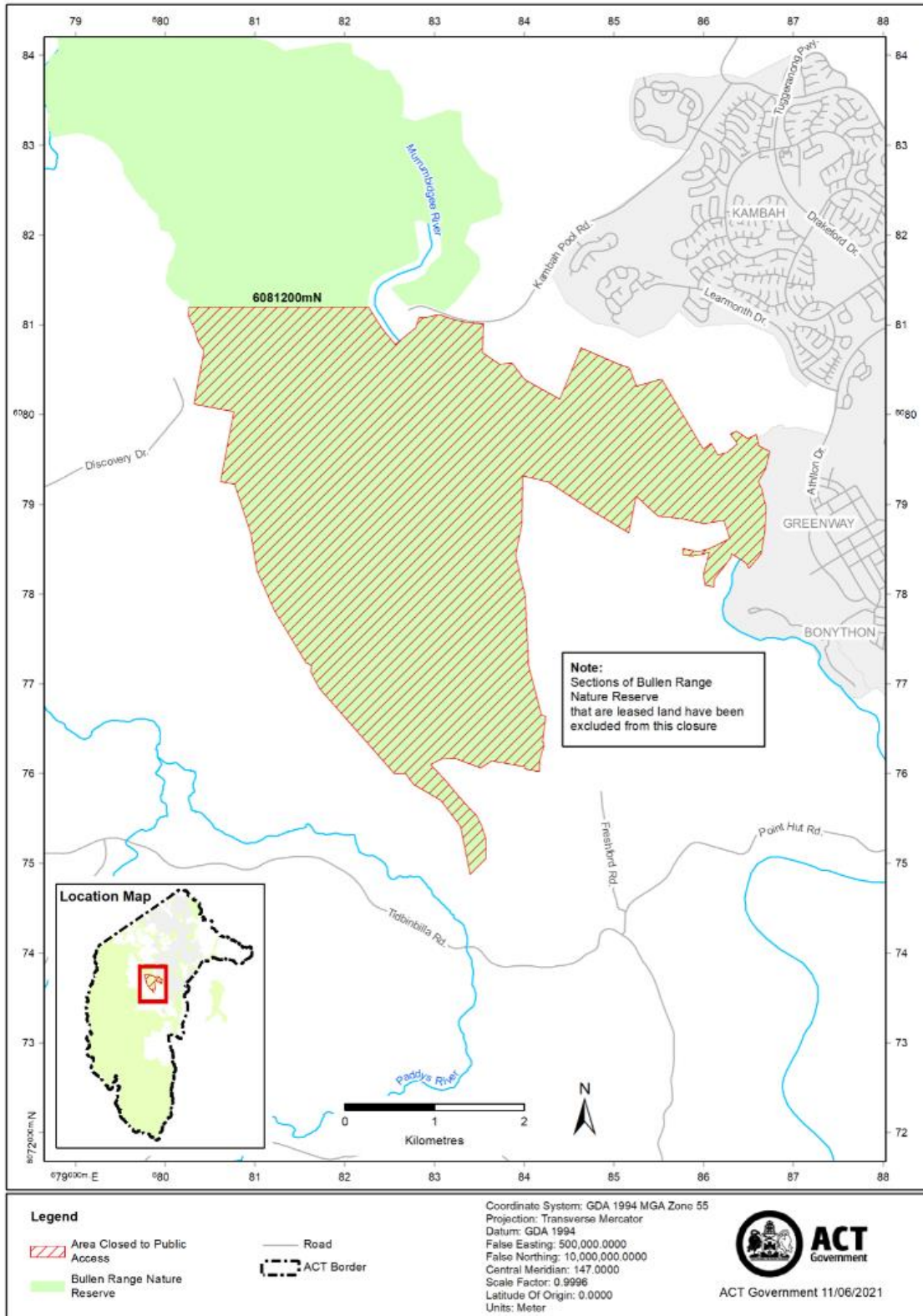
Schedule 1 Area of Molonglo River Reserve closed to public access

(see s 3)



Schedule 2 Area of Bullen Range Nature Reserve closed to public access

(see s 3)



Schedule 3 Area of Namadgi National Park closed to public access

(see s 3)

