

Nature Conservation (Closed Reserves – Namadgi National Park and Lower Cotter Catchment Reserve) Declaration 2022

Notifiable instrument NI2022–252

made under the

Nature Conservation Act 2014, s 259 (Conservator may close reserve)

1 Name of instrument

This instrument is the *Nature Conservation (Closed Reserves – Namadgi National Park and Lower Cotter Catchment Reserve) Declaration 2022*.

2 Commencement

This instrument commences on 16 May 2022.

3 Declaration

(1) I declare that public access to those parts of Namadgi National Park indicated in the maps at schedule 1 is prohibited.

Note A second substantial section of Namadgi National Park and the adjoining Bimberi Wilderness Area will also be closed during some of the period of this closure.

(2) I declare that public access to those parts of Lower Cotter Catchment Reserve indicated in the map at schedule 2 is prohibited.

4 Exceptions

Section 3 does not apply to:

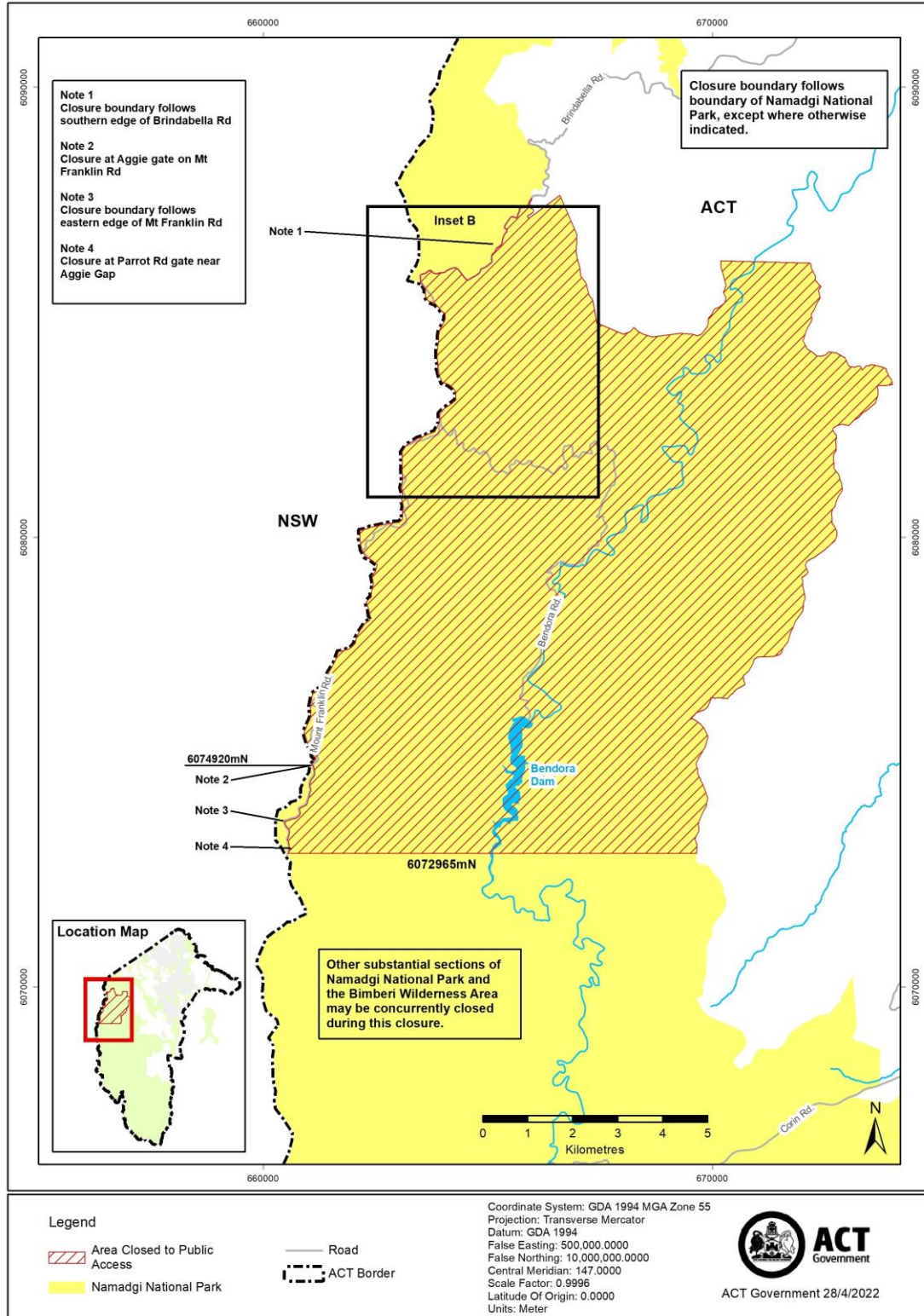
- (a) a conservation officer exercising a function under the Act within the areas declared under section 3 (*closed reserves*); or
- (b) any person accompanied by a conservation officer; or
- (c) a contractor undertaking works within the closed reserves and engaged by the ACT Government to do so.

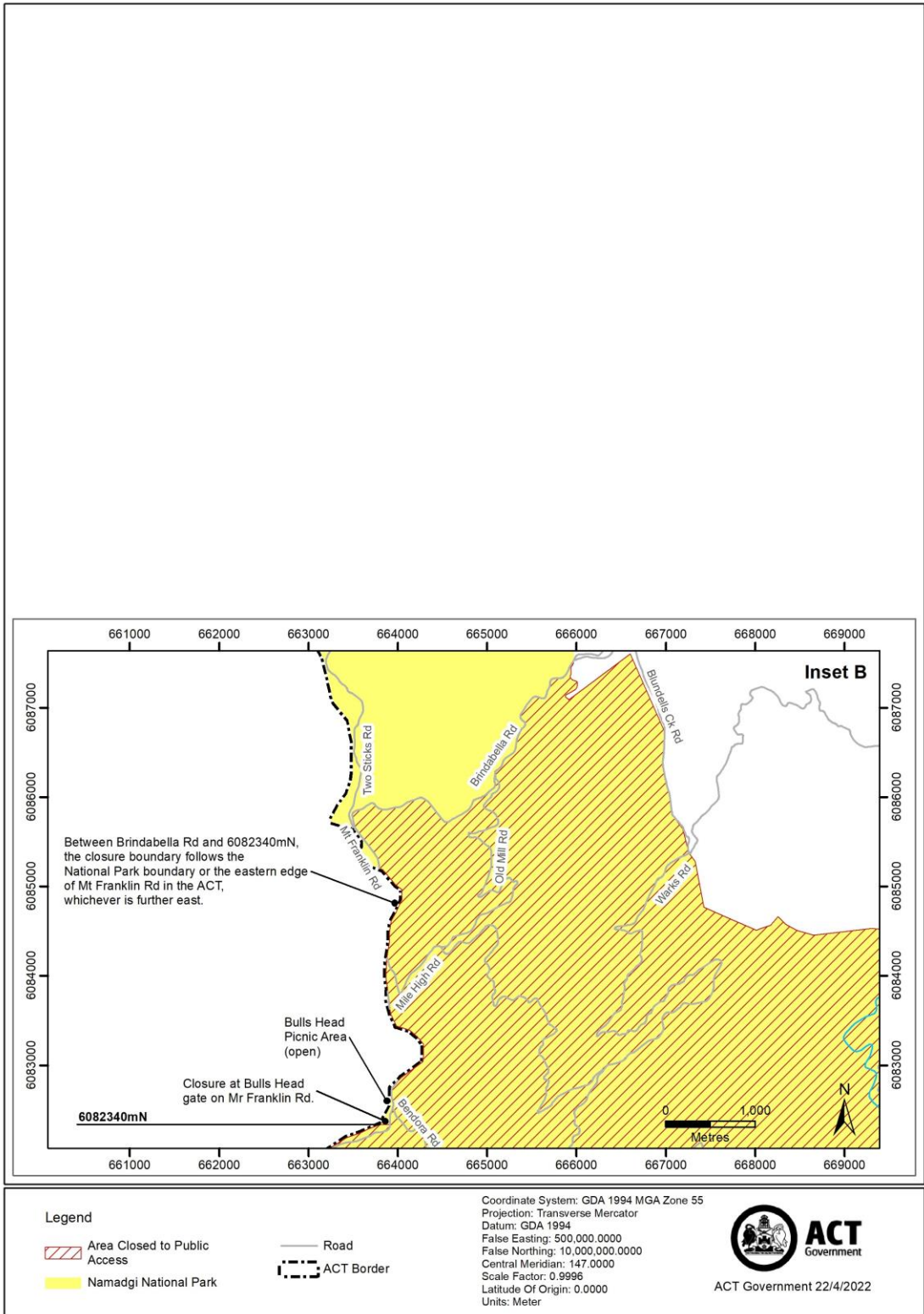
Ian Walker
Conservator of Flora and Fauna

5 May 2022

Schedule 1 Area of Namadgi National Park closed to public access

(see s 3)





Schedule 2 Area of Lower Cotter Catchment Reserve closed to public access

(see s 3)

