



Part D

District Policies

D5 – Molonglo Valley
District Policy

Table of Contents

District Map	1
Land Use Table	2
Policy Outcomes	3
Assessment Outcomes	4
Area specific assessment outcomes	4
Molonglo Valley District	4
Molonglo Town Centre and surrounds	4
Whitlam	5
Assessment Requirements	6
Coombs	6
Urban structure	6
Land use	6
Active frontage	6
Building height	6
Gas connections	6
Figure 1 Coombs – Active Frontages	7
Figure 2 Coombs – Building Heights	8
Denman Prospect	9
Urban structure	9
Land use	9
Gross floor area	9
Building height	9
Gas connections	9
Subdivision	9
Figure 3 Denman Prospect – Access and Visual Corridor	10
Molonglo Valley District – Future Urban Areas	11
Urban structure	11
Subdivision design	11
Road network	11
Natural systems	11
Wildlife corridor	11
Heritage	11
Land use	11
Local centres	11
Open space	12
Community and recreation facilities assessment	12
Playing fields	12
National Bicentennial Trail	12
Shared paths	12
Gross floor area	12

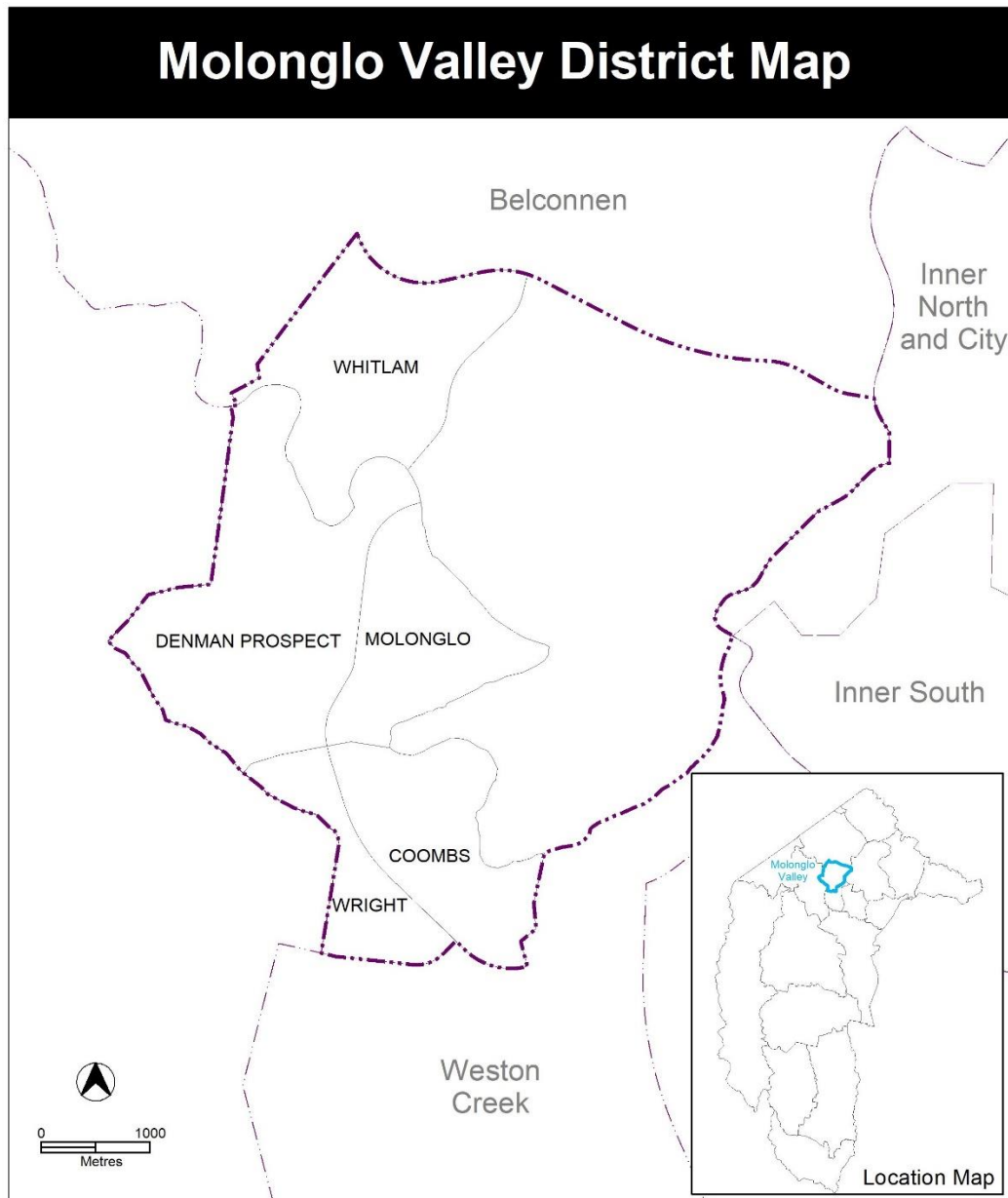
Building height	12
Gas connections	12
Figure 4 – Molonglo District - Shared Paths and on-road cycling routes	13
Molonglo –Town Centre and Surrounds - Future Urban Areas (Figure 5)	14
Urban edge	14
Urban structure	14
Land use – Commercial CZ1 Core zone	14
Land use – mixed use	14
Land use – residential.....	14
Land use – school sites	14
Land use – community and recreation facilities.....	14
Land use – prohibited.....	15
Land use – Emergency services facility	15
Community and recreation facilities assessment.....	15
Open space	15
Active frontage	16
Active travel	16
Public transport	16
Road structure.....	16
Road design	17
Vehicle movement	17
Vehicle access.....	17
Car parking	17
Bushfire protection zones	18
Gas connections	18
Figure 5 Molonglo Town Centre and surrounds – Location	19
Figure 6 Molonglo Town Centre and surrounds – Precinct Location Plan	20
Figure 7 Molonglo Town Centre and surrounds – Community Facilities	21
Figure 8 Molonglo Town Centre and surrounds – Open space Network and Parks	22
Figure 9 Molonglo Town Centre and surrounds – Street network and Hierarchy	23
Figure 10 Molonglo Town Centre and surrounds – Public transport and indicative bus station location	24
Figure 11 Molonglo Town Centre and surrounds – Active travel Networks	25
Figure 12 Molonglo Town Centre and surrounds – Bushfire Protection Zones	26
Diagram 1: Molonglo Town Centre and surrounds – Typical cross section of east-west arterial road.....	27
Image 1 Molonglo Town Centre and surrounds – Concept plan illustrative.....	28
Whitlam	29
Noise.....	29
Building height	29
Specific requirement	29
Gas connections	29
Active frontage	29
Building height	29
Vehicle access.....	29
Setbacks	29
Figure 13 Whitlam – Ongoing Provisions	30
Figure 14 Whitlam – Ongoing Provisions	31
Figure 15 Whitlam – Ongoing Provisions	32

Figure 16 Whitlam – Ongoing Provisions	33
Figure 17 Whitlam – Ongoing Provisions	34
Figure 18 Whitlam – Ongoing Provisions	35
Figure 19 Whitlam – Ongoing Provisions	36
Figure 20 Whitlam – Ongoing Provisions	37
Figure 21 Whitlam – Ongoing Provisions	38
Figure 21A Whitlam – Ongoing Provisions	39
Wright	40
Urban structure	40
Active frontage	40
Land use	40
Building height	40
Clearance zones	40
Gas connections	40
Figure 22 Wright – Ongoing Provisions	41
Figure 23 Wright – Active Frontages and Public Spaces.....	42
Figures – Assessable and Prohibited Development.....	43
Figure 24 Coombs	43

District Map

This policy applies to land within the area identified as the Molonglo Valley District in the map below.

Maps detailing specific assessment outcomes and requirements are included at the end of this policy.



Land Use Table

The following table specifies additional types of development and land uses that are assessable in this district. These are additional to the development types and land uses specified as assessable within the applicable zone policy.

The uses listed require development approval unless they meet the ‘exempt development’ definition of the *Planning Act 2023*. Development and land use types listed are defined in the Territory Plan Dictionary.

The table also specifies additional types of development and land uses that are prohibited in this district. These are prohibited, notwithstanding whether they are listed as assessable under the applicable land use policy. Development of prohibited uses may be considered under certain limited circumstances as outlined under Part 7.3 of the *Planning Act 2023*.

Locality	Zone	Additional assessable development	Additional prohibited development	Relevant parcel or Figure
Coombs	CZ5	municipal depot	Nil	AD1 Figure 24
Denman Prospect		Nil	Nil	
Whitlam		Nil	Nil	
Wright	CFZ	Nil	residential care accommodation supportive housing, retirement village	Block 3 Section 29

Policy Outcomes

Development proposals in the Molonglo Valley District will be assessed having regard to the key characteristics of the district and the policy outcomes to be achieved for the district. The policy outcomes to be achieved for Molonglo Valley District are derived from the Molonglo Valley District Strategy, that sets the vision and directions for the district.

The desired policy outcomes to be achieved for Molonglo Valley District include:

1. Protect and retain significant environmental and heritage values of the Molonglo River Corridor Reserve and other sensitive areas through appropriate buffering from new development and consistent with the Molonglo Valley Plan for the Protection of Matters of National Environmental Significance.
2. Protect, preserve and enhance all areas of high value grassland and woodland, including mature native trees, as part of a connected ecological network linking the river to the hills.
3. Develop economic specialisation in recreation and tourism, building on the presence and proximity of Stromlo Forest Park, National Arboretum Canberra, mountain biking and natural recreational assets.
5. Enhance public transport priority connections to Inner North and City District and to Weston Creek, Woden and Belconnen districts in future.
6. Expand active travel connections as new suburbs are established with improved links to surrounding districts and the City Centre, centres and recreational spaces including the river corridor, Stromlo Forest Park and the National Arboretum Canberra.
7. Develop future local centres as active mixed-use hubs (according to best practice design and place frameworks).
8. Build on the existing allocation of land for new community and recreational facilities and identify additional land as needed to support expected growth across the district.
9. Situate new housing within the distinctive landscape, including respecting the natural terrain, managing bushfire risks and the way water moves across and through the land.
10. Achieve best practice sustainability, urban design and water sensitive urban design outcomes for all new residential development, including walkability to shops and services.

The desired policy outcomes to be achieved for Molonglo Town Centre and surrounds (within a future urban area) include:

1. Design of the Molonglo Town Centre and surrounds protects existing heritage, cultural and environmental values, including consistent with the Strategic Assessment of the Molonglo Valley Plan for the Protection of Matters of National Environmental Significance.
2. Encourage development that aims to achieve net zero emissions in transport, buildings and precincts.
3. Promote energy efficiency and sustainability through urban design.
4. Promote land uses that support new businesses and commercial enterprises that provide employment opportunities, shops, services and an economic life in the heart of the Molonglo Valley.
5. The town centre is the principal commercial and retail hub for the district of Molonglo Valley.
6. Promote access and connectivity between the town centre core, services, community facilities, nearby residential precincts and external features such as the Molonglo River Reserve and open space network.
7. Provision of a diversity of housing and recreational opportunities for a significant residential population that will access the centre regularly to work, shop, meet, linger and relax.
8. Provide for a range of housing zones to provide for diverse housing types, sizes and densities to meet the changing needs of the community.
9. Incorporate the exceptional landscape setting and high-quality remnant trees as a feature of the town centre and surrounds, and guide where key public spaces are located.
10. The interconnected open spaces offer recreation and social opportunities that benefit the health and wellbeing of the community and provide high levels of amenity.

Assessment Outcomes

Consistent with the district policy outcomes, development proposals in the Molonglo Valley District must demonstrate that they are consistent with any area specific assessment outcomes that may apply, as well as the relevant zone assessment outcomes.

In demonstrating compliance with the assessment outcomes, consideration is to be given to the relevant design guides and may be given to planning technical specifications which may serve as a benchmark. While all assessment outcomes are to be met, not all outcomes are covered by design guidance and/or planning technical specifications.

Where a proposed development complies with relevant provisions in the design guide and/or planning technical specification and the development comprehensively addresses the assessment outcome, further assessment regarding that assessment outcome will not be required.

Where a design guide applies to a development, the proposal must demonstrate that it is consistent with the relevant guidance. More information is available in the design guide. Given the nature of the design guides, different design responses are possible to meet the same assessment outcomes.

The Territory Planning Authority may consider advice or written support from a referral entity to demonstrate compliance with a relevant assessment outcome. Where endorsement from an entity is noted as a planning technical specification, entity referral will be required.

Area specific assessment outcomes

The assessment outcomes for proposed development in specific locations are listed below. Localities that are not listed do not have any area specific assessment outcomes to consider.

Locality	Assessment outcome
Molonglo Valley District	<ol style="list-style-type: none">1. The landscape setting and values of the Molonglo Valley will be recognised and incorporated into the urban design of the future urban area. Boundary hills and significant internal ridges within the urban fabric will be excluded from inappropriate development.2. Upward light spill will be minimised in recognition of its proximity to the Mount Stromlo Observatory.
Molonglo Town Centre and surrounds (Figure 5)	<ol style="list-style-type: none">3. Varied building heights, with taller buildings having slender footprints, encourages built form that responds to existing topography and the natural environment, and generally provides a gradual transition in height and scale, from lower buildings in the suburban areas to the tallest buildings in the Core zone. A variety of heights are provided across the Town Centre and surrounds to create architecturally interesting streetscapes and provide views to the river corridor and broader landscape.4. Solar access is enabled to public spaces, particularly in the winter months, to provide pleasant spaces for community and to promote healthy growth of plants and trees.5. The public realm is protected by limiting overshadowing and wind impacts on streets and public places.6. Development incorporates interactive, human scale, ground level building frontages to the streets and public realm where appropriate.

Locality	Assessment outcome
	<ul style="list-style-type: none"> 7. A range of retail and commercial uses are provided that interconnect with community facilities. 8. The integration of community and recreation facilities enhances the quality of the commercial core and its surrounds. 9. Views from the town centre to significant landscape features, such as Black Mountain are retained, to assist people to easily navigate the town centre and promote a sense of place.
Whitlam	10. Development is designed to minimise the noise impact from William Hovell Drive.

Assessment Requirements

Assessment requirements set the mandatory development controls for specific areas, and sites within the Molonglo Valley District. These provisions are in addition to and, where inconsistencies occur, prevail over any assessment requirements that are provided in the relevant zones policy.

Development proposals in the Molonglo Valley District must meet the following requirements. Localities that are not listed do not have assessment requirements.

Locality	Assessment requirement
Coombs	
Urban structure	<ol style="list-style-type: none">1. The boundary between urban blocks (other than single dwelling) and PRZ1 and NUZ4 zoned land should provide the following:<ol style="list-style-type: none">a) Easy access to open space.b) Surveillance of open space.c) Avoid boundary fencing.d) Ground floor dwellings address open space where there is no edge street.
Land use	<ol style="list-style-type: none">2. CFZ blocks of not less than 6 hectares must accommodate, at a minimum, a primary school, community activity centre and early childhood education and care, unless otherwise agreed by the ACT Government.3. Buildings in CZ4 are designed to be adaptable for commercial use.4. Buildings in the CFZ zone must provide a community use.5. Buildings in CZ5 at the corner of John Gorton Drive and Fred Daly Avenue, and fronting Fred Daly Avenue, are designed to be adaptable for commercial use and address both roads.
Active frontage	<ol style="list-style-type: none">6. Active frontages are provided in accordance with Figure 1.
Building height	<ol style="list-style-type: none">7. Minimum buildings heights in Area A on Figure 2 are:<ol style="list-style-type: none">a) 2 storeys.b) Facing John Gorton Drive – 3 storeys.
Gas connections	<ol style="list-style-type: none">8. No new gas network connections are allowed to all new or existing developments including redevelopments on CZ1 and CZ2 zoned land.

Figure 1 Coombs – Active Frontages

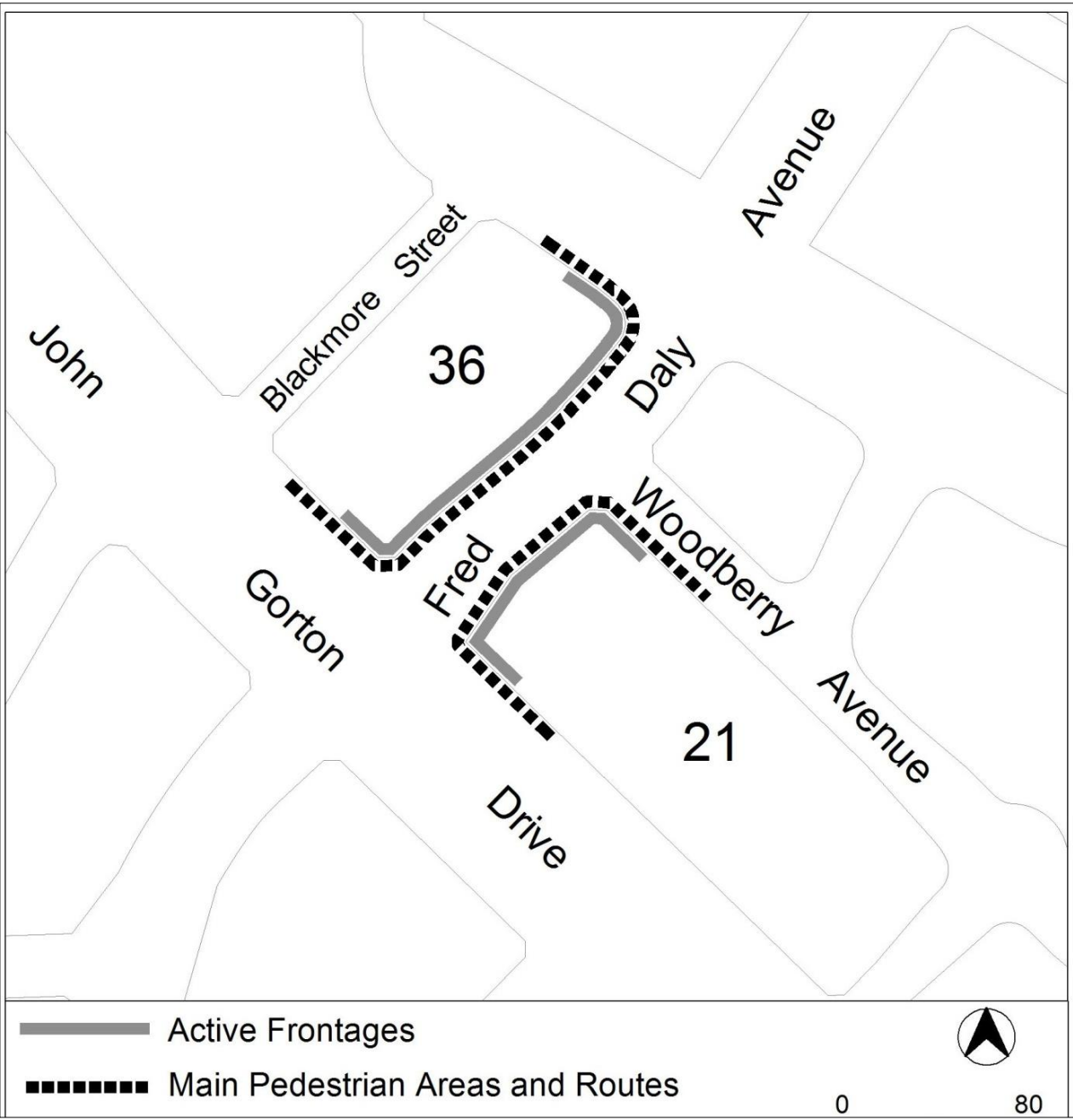
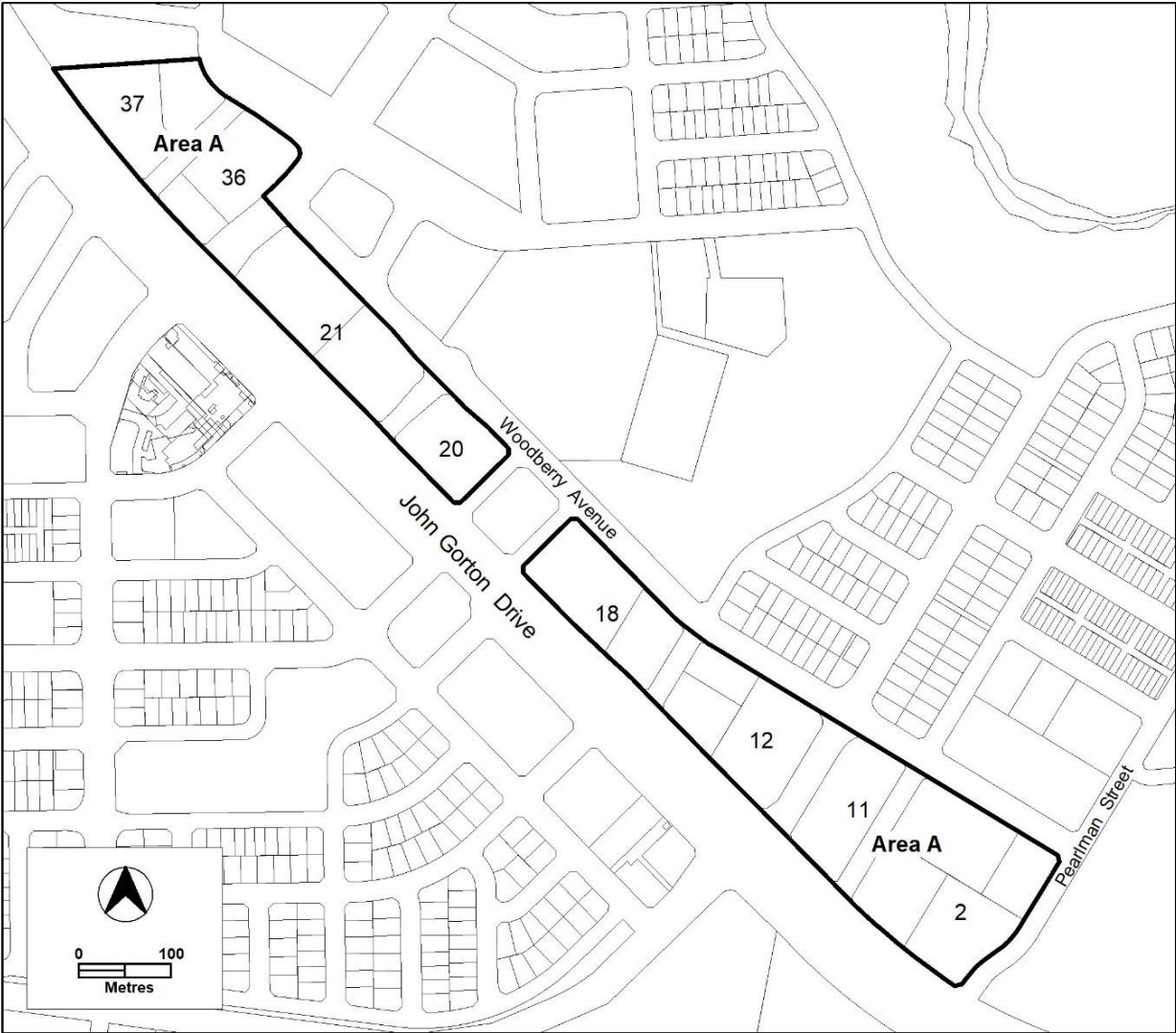
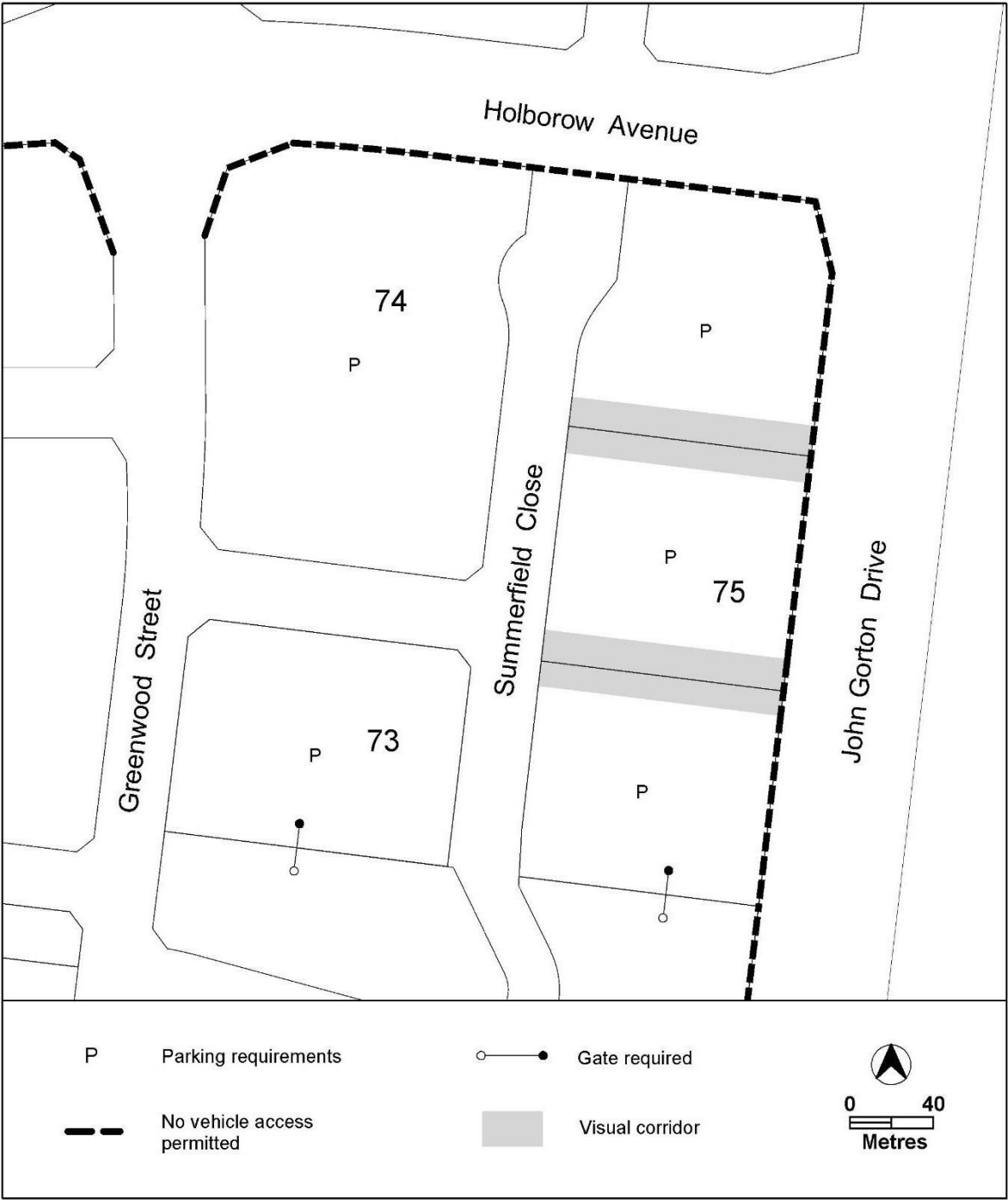


Figure 2 Coombs – Building Heights



Locality	Assessment requirement	
Denman Prospect		
Urban structure	9.	In accordance with Figure 3 , buildings are setback to achieve a visual corridor through the block from John Gorton Drive to Summerfield Close.
Land use	10.	Section 59 blocks 33, 34 and 35 community activity centre and place of worship are mandatory. These uses are to have a combined minimum gross floor area of 900m ² and must be operated by a not-for-profit organisation.
Gross floor area	11.	Total commercial gross floor area for section 72 is 1000m ² , with a limit of 250m ² GFA per tenancy.
	12.	Total commercial gross floor area for section 98 block 1 is 600m ² with a GFA limit of 200m ² per tenancy.
Building height	13.	Development on section 72 complies with the following maximum number of storeys: a) Within 60m of boundaries of blocks zoned RZ1 – 3. b) Elsewhere on the site – 6.
Gas connections	14.	No new gas network connections are allowed to all new or existing developments including redevelopments on CZ1 and CZ2 zoned land.
Subdivision	15.	Subdivision of section 83 block 1 to create a maximum of two blocks is permitted.

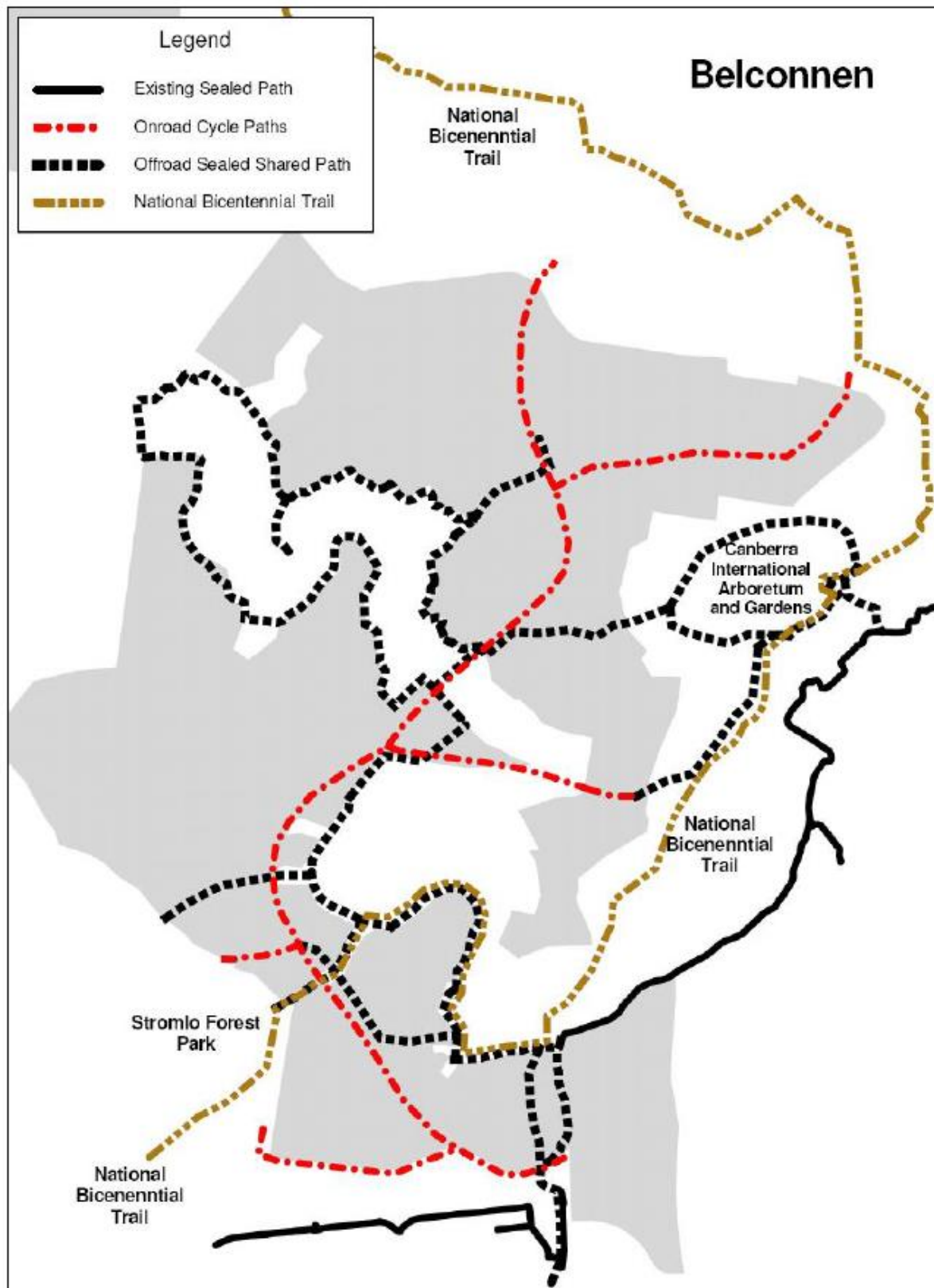
Figure 3 Denman Prospect – Access and Visual Corridor



Locality	Assessment requirement
Molonglo Valley District – Future Urban Areas	
Urban structure	16. Sites will be allocated for eight government schools, or as agreed by the Education Directorate. This includes school sites required in the Molonglo – Town Centre and Surrounds – Future Urban Area . They will be sited on land with suitable topography, in locations that minimise the length of trips to and from school.
Subdivision design	17. Development complies with the following: <ul style="list-style-type: none"> a) Subdivision design and road layout will maximise access to ‘special places’ to enhance the character of Molonglo Valley and contribute to a ‘sense of place’. Special places include Stromlo Forest Park, the National Arboretum Canberra, the town centre and other commercial centres, neighbourhood activity nodes, active and passive open spaces, riparian (creek and drainage) corridors, riverside parks and other open space corridors. b) Critical natural habitats and connectivity will be protected consistent with ACT Government advice and the Molonglo Valley Plan for the Protection of Matters of National Environmental Significance.
Road network	18. At least two road crossings of the Molonglo River are to be provided, one for the north-south arterial road and the other for the east-west arterial road.
Natural systems	19. Development is to be generally contained to the west of the ridge that separates Molonglo and North Weston from the Tuggeranong Parkway and Lake Burley Griffin to ensure that it does not visually adversely impact the Central National Area (i.e. central Canberra as identified by the National Capital Plan). 20. Important hills and ridgelines which form the skyline of the Central National Area are to be generally excluded from development. These include the east side of the main ridgeline to the west of Tuggeranong Parkway (generally from Dairy Farmers Hill to the Molonglo River). 21. The lower Molonglo River gorge and Murrumbidgee River corridor are to be managed to protect bird habitats, and high value woodlands and grasslands.
Wildlife corridor	22. A wildlife corridor with associated high value woodlands and grasslands will be provided from the Belconnen Hills to the slopes of Mount Stromlo generally through the ‘Kama’ property (Blocks 1419 and 1020 District of Belconnen) and Spring Valley Farm (Blocks 402 and 404 District of Stromlo).
Heritage	23. A Heritage Management Plan must be undertaken for the Weetangera Cemetery prior to the development front reaching this area.
Land use	24. Commercial uses, generally of a non-retail nature, may be located within the CZ5 zone to the north east of the town centre, at the edge of the Molonglo River corridor. These uses may be associated with river corridor activities and/or residential development.
Local centres	25. Local centres providing for convenience shopping are to be located throughout the development area at key focal points having good pedestrian and vehicular access. 26. A small group centre is to be located beside the north-south arterial road to the north of the Molonglo River. Opportunities for higher density housing will be provided adjacent to, and possibly within, the small group centre.

Locality	Assessment requirement
Open space	<p>27. Provision of open space links are provided between Stromlo Forest Park, Molonglo River corridor and the National Arboretum Canberra, and are to be suitable for equestrian, cycling and pedestrian use.</p> <p>28. Major passive open space areas are to be provided in conjunction with significant drainage lines, lake side reserves, together with prominent hills including Misery Hill and the smaller hill to its south east, and will generally be edged by streets, not back or side fences.</p>
Community and recreation facilities assessment	<p>29. A community and recreational facilities needs assessment is provided, and is to the satisfaction of the relevant government agency, and:</p> <ul style="list-style-type: none"> a) The provision of community facilities is to generally align with the outcomes of the needs assessment. b) Community facilities are generally to be accessible from the ground floor. b) Community facilities can either be provided as Community Facility zoned land, or floor space dedicated to community uses within a mixed-use development in an alternative zone. c) At least one place of worship is provided on land north of the Molonglo River and is zoned Community Facility, either as a standalone site or co-located with other community facilities, to the satisfaction of the relevant government agency.
Playing fields	<p>30. Playing fields will be provided in central locations, typically co-located with schools to optimise access and usage. Where playing fields are co-located with schools, they are accessible to the public outside of school hours, where feasible.</p> <p>31. Playing fields, ovals and district parks will, where possible, be located on flatter land and be accessible to movement systems. They will be edged by a local street and provide parking where practicable on edge streets to avoid large surface car parks.</p> <p>32. Land with suitable topographic characteristics is to be reserved for one district-level playing field within the district, subject to the satisfaction of the relevant government agencies..</p>
National Bicentennial Trail	<p>33. The National Bicentennial Trail between Uriarra Road in the west to the concrete causeway over the Molonglo River in the east will be replaced by a suitably located mixed-use off-road trail, linking Stromlo Forest Park and the National Arboretum Canberra. Bridle trails are to be incorporated into the development where required. Where provided, mixed use trails will link to existing equestrian facilities including the National Bicentennial Trail, the Pegasus Disabled Riding School, Forest Park Riding School, the public Equestrian Park in Yarralumla, pony clubs and agistment facilities. The trails will also connect to recreation trails in the National Arboretum Canberra and Stromlo Forest Park.</p>
Shared paths	<p>34. Shared paths (bicycle/pedestrian) will provide access to key features within Molonglo and North Weston, including the river corridor, town centre, group centre, local centres, Stromlo Forest Park and the Canberra International Arboretum and Gardens, generally in accordance with Figure 4. The paths will also connect to existing shared paths that link Molonglo with the City and the districts of Belconnen, Weston Creek and Woden Valley.</p>
Gross floor area	<p>35. In Denman Prospect along John Gorton Drive the maximum gross floor area for a shop is 250m².</p>
Building height	<p>36. Residential development of up to 6 storeys is permitted at commercial centres.</p>
Gas connections	<p>37. No new gas network connections are allowed to all new or existing developments including redevelopments on CZ1 and CZ2 zoned land.</p>

Figure 4 – Molonglo District - Shared Paths and on-road cycling routes



Locality	Assessment requirement
Molonglo –Town Centre and Surrounds - Future Urban Areas (Figure 5)	
Urban edge	<p>38. The urban edge is designed:</p> <ol style="list-style-type: none"> To achieve an attractive recreation space which establishes a clear perimeter for urban development. To protect and enhance the social and ecological value of the Molonglo River Reserve. To accommodate essential trunk infrastructure, as required. In consideration of the Molonglo River Reserve management plan.
Urban structure	<p>39. Development of precincts (precincts are identified in Figure 6) within the future urban area is generally in accordance with the concept outlined in Image 1 and the following:</p> <ol style="list-style-type: none"> Denman Prospect precinct – provides a maximum of 2,950 dwellings. Molonglo Central precinct zones are limited to CZ1 Core, CZ3 Services, CFZ Community Facility, PRZ1 Urban Open Space and PRZ2 Restricted Access Recreation zones.
Land use – Commercial CZ1 Core zone	<p>40. Residential development located in the commercial CZ1 Core zone provides for:</p> <ol style="list-style-type: none"> Social and/or community housing. A variety of dwelling types and sizes that encourages different ways to live, such as co-housing and opportunities for ageing in place. A mix urban, compact, multi-unit dwelling types and sizes that improves access to, and supports families, affordability and adaptability.
Land use – mixed use	<p>41. A mix of uses is encouraged, including retail/commercial uses, residential and community facilities to create strong links, accessibility and amenity to foster a sense of place and community identity. Residential uses must not compromise ground floor commercial uses.</p>
Land use – residential	<p>42. Residential development provides for a range of housing types, such as supportive, community, co-housing and opportunities for ageing in place.</p>
Land use – school sites	<p>43. Two school sites are provided, and are generally located in accordance with Figure 7 and contained within a Community Facility zone:</p> <ol style="list-style-type: none"> In Denman Prospect precinct of 4.3 hectares or as agreed by the Education Directorate. In Molonglo East precinct of 9.3 hectares which includes a town oval or as agreed by the Education Directorate. <p>44. School sites provide the following facilities that are accessible to the public, including sporting clubs and groups outside of school hours:</p> <ol style="list-style-type: none"> In the Denman Prospect precinct school site (Figure 6) – a playing field of at least one hectare in area. In the Molonglo East precinct school site (or location agreed by the Education Directorate): <ol style="list-style-type: none"> a multi-purpose indoor centre with a gross floor area of at least 5,300m² a town oval of at least 1.9 hectares in area.
Land use – community and recreation facilities	<p>45. Recreation and community facilities:</p> <ol style="list-style-type: none"> The provision of community facilities is to generally align with the outcomes of the community and recreation facilities assessment, generally in the locations indicated in Figure 7 and be accessible from the ground floor. Include spaces that can be used for activities, passive recreation, gatherings and performances, such as a town square. Where possible, are co-located in highly accessible locations to active travel routes and public transport stops.

Locality	Assessment requirement
	<ul style="list-style-type: none"> d) Include a town plaza adjoining the main street designed with sufficient area to provide spaces for people to meet, relax and spend time and to allow for temporary uses including markets, stalls and community. e) Include a town oval within the school site in the Molonglo East precinct (or in a location agreed by the Education Directorate). f) In the suburb of Molonglo, a site for a place of worship is provided on land zoned for Community Facility, either as a standalone site or co-located with other community facilities, to the satisfaction of the relevant government agency. <p>46. A recreation facility of at least 1.5 hectares is provided within the PRZ2 Restricted Access Recreation zone, generally in accordance with the Territory Plan map.</p>
Land use – prohibited	<p>47. The following uses are to be prohibited in:</p> <ul style="list-style-type: none"> a) CZ3 – residential use. b) Southern portion of CZ1 zone south of the green link and town park (identified in Figure 8) – residential use at ground and first floor.
Land use – Emergency services facility	<p>48. In accordance with the development of the future urban area within the Molonglo Central Precinct (Figure 6), an emergency services facility site of at least 0.6 hectares, or as agreed by the relevant government agency, is to be provided.</p>
Community and recreation facilities assessment	<p>49. A community and recreation facilities needs assessment is undertaken and provided to the satisfaction of the relevant government agency, that:</p> <ul style="list-style-type: none"> a) Involves consultation with the community. b) Considers providing community facilities as either Community Facility zoned land or floor space dedicated to community uses within a mixed-use development in an alternative zone. c) Considers co-locating medium to smaller scale community facilities (for example a library) within mixed use development in the commercial CZ1 Core zone, close to the town park and accessible from ground floor level.
Open space	<p>50. Open spaces:</p> <ul style="list-style-type: none"> a) Are designed to provide appropriate facilities, which includes consideration of incorporating community spaces, formal and informal play spaces, landscape features and connection to movement networks and cycle paths. b) Demonstrate engagement with the Dhawura Ngunnawal Caring for Country Committee and the United Ngunnawal Elders Council is undertaken to inform how the town centre and open spaces can celebrate Ngunnawal culture. c) Are a series of formal and informal open spaces as well as natural areas and are designed generally in accordance with Figure 8, and to the satisfaction of the relevant government agency. d) Include areas of natural habitat, ponds for stormwater management and urban amenity. e) Include a focal point for community and wildlife, a town park, a town plaza, local parks. f) Include linkages to the Molonglo River Reserve and Craven Creek to the west. g) Include an east-west green link and large canopy trees which promote movement of birdlife and wildlife, and contribute to cooling of the urban areas and include where possible, exceptional and high-quality trees. <p>51. A town park, generally in accordance with Figure 8 and contained within a PRZ1 Urban Open Space zone, which is:</p> <ul style="list-style-type: none"> a) Located at the knoll at the highest point of the town centre. b) Designed to retain remnant trees.

Locality	Assessment requirement
Active frontage	<p>52. Mandatory active frontages are required for buildings facing the main street (Figure 9), bus interchange and town park as identified in Figure 10 and require:</p> <ol style="list-style-type: none"> For buildings fronting streets and/or public open spaces – display windows and shop fronts at the ground floor level. Direct pedestrian access at grade with the verge, for access and egress for persons with disabilities.
Active travel	<p>53. Pedestrian and cycle paths:</p> <ol style="list-style-type: none"> Are designed, generally consistent with Figure 11 to use the area's topography to provide accessible networks for people of all abilities and connect the town centre to the wider Molonglo Valley. <p>54. Active travel routes are generally designed in accordance with Figure 11 and the Molonglo Valley Active Travel Master Plan, are to the satisfaction of the relevant government agency, and provide:</p> <ol style="list-style-type: none"> Accessible and direct linkages to the town centre core, other suburbs of the Molonglo Valley, recreational areas, schools, play spaces and key activity nodes. Signalised pedestrian crossings at key intersections and are generally consistent with Figure 11. Priority for public transport vehicles at intersections within the Molonglo Central precinct.
Public transport	<p>55. The following are provided, to the satisfaction of the relevant government agency:</p> <ol style="list-style-type: none"> A public transport interchange and rapid transport station generally consistent with Figure 10 and is designed to: <ol style="list-style-type: none"> Integrate with the town plaza and the town centre shops, and services and community facilities. Provide space for large canopy trees and landscaping. Be adaptable for light rail. Operate in a similar way with local transport as the interchange at Northbourne Avenue and Cape Street in Dickson and respond to the requirements of an analysis of public transport operational needs. <p>56. A bus layover in the CZ3 Services zone is provided to the satisfaction of the relevant government agency, generally consistent with Figure 10 and includes:</p> <ol style="list-style-type: none"> Toilet facilities. A shelter suitable for taking meal breaks. Bike and ride facilities are provided as a part of the public transport network and are provided in locations to the satisfaction of the relevant government agency.
Road structure	<p>57. The following roads and road details are provided:</p> <ol style="list-style-type: none"> John Gorton Drive is the main north-south arterial road through Molonglo Valley, designed to provide for public transport, including the opportunity for light rail. An east-west arterial road that links the town centre and surrounding residential areas to the Tuggeranong Parkway, via a new bridge crossing of the Molonglo River and the south-east precinct of Molonglo 3 East development. The arterial road is designed to provide for public transport and safe pedestrian access crossings into the town centre. John Gorton Drive achieves: <ol style="list-style-type: none"> A more urban character as it passes through the commercial centre. Contributes to a sense of arrival at the centre. Buildings designed to provide surveillance over the street. Active uses face main public transport stops in consideration of rapid public transport connections along John Gorton Drive being replaced by light rail in the longer term.

Locality	Assessment requirement
	<p>58. The road and circulation network hierarchy and linkages are generally consistent with Figure 9 and are to the satisfaction of the relevant government agency and provide that:</p> <ul style="list-style-type: none"> a) John Gorton Drive is designed as the highest order street in the Molonglo Valley district with trunk public transport access. b) East-west access streets are designed with wide street verges and large canopy street trees, provide a comfortable pedestrian environment, contain on-street parking, provide efficient access to residential estates for movement of cars, cyclists and pedestrian, on-street parking, and safe and priority pedestrian crossings to connect active travel routes with the town centre. c) East-west arterial road provides efficient access to residential estates and car, cyclist and pedestrian movements, on-street parking and safe and priority pedestrian crossings to connect active travel routes with the town centre (see Diagram 1).
Road design	<p>59. The east-west arterial road is generally designed in accordance with Diagram 1 and the following:</p> <ul style="list-style-type: none"> a) As the road approaches the commercial centre from the east and west it transitions to a more urban character and function. b) Is safe and engages with public spaces. c) Contains active and diverse building frontages. d) Shops and services at the ground floor level in the town centre and service trades areas are designed to face the arterial road. e) Views and vistas over parkland and urban spaces are maximised. f) Buildings are designed to provide surveillance over the street while preserving the privacy of residents.
Vehicle movement	<p>60. The main street, as indicated in Figure 9 is designed as a slow speed vehicle environment where pedestrians are prioritised and contain wide street verges, large canopy street trees, active frontages facing the street.</p>
Vehicle access	<p>61. Vehicle access from blocks to the main street is prohibited.</p> <p>62. A maximum of one vehicular access/egress point is provided to car parking areas per block for each street frontage and all access/egress points are clearly defined and visually recessive in the built form, unless otherwise agreed by the relevant government agency.</p>
Car parking	<p>63. In the CZ1 core zone podium parking and ground level car parking is prohibited at ground and first floor levels except where:</p> <ul style="list-style-type: none"> a) Surface carparking is minimised and used only as a temporary measure, unless screened by buildings. b) Parking areas, including ground level parking, multi-level car parks and podium parking are concealed and screened by buildings with active development frontages or residential uses where permitted. c) Opportunities for on-street parking are provided and integrated with street trees and landscaping. d) Natural topography of the land is utilised to promote multi-level car parking in basements and under croft development. <p>64. Car parking associated with sport and recreation facilities on school sites is to remain available to the public outside school hours.</p>

Locality	Assessment requirement
Bushfire protection zones	<p>65. Bushfire protection zones are to be established, generally in accordance with Figure 12 and in consideration of a preliminary bushfire protection plan and detailed design of the urban edge (interface between urban development and the Molonglo River Reserve) to the satisfaction of the relevant government agency and that:</p> <ul style="list-style-type: none"> a) Addresses measures taken to minimise impacts on the Molonglo River Reserve. b) Integrates trunk infrastructure services with paths and circulation. c) Networks, topography, walls, paths, trees and other landscape infrastructure. d) Integrates edge roads including verges and shared path networks to form part of the inner asset protection zones and the urban edge, where edge roads do not encroach into the Molonglo River Reserve or protected habitat.
Gas connections	<p>66. No new gas network connections are allowed to all new or existing developments including redevelopments on CZ1 and CZ2 zoned land.</p>

Figure 5 Molonglo Town Centre and surrounds – Location

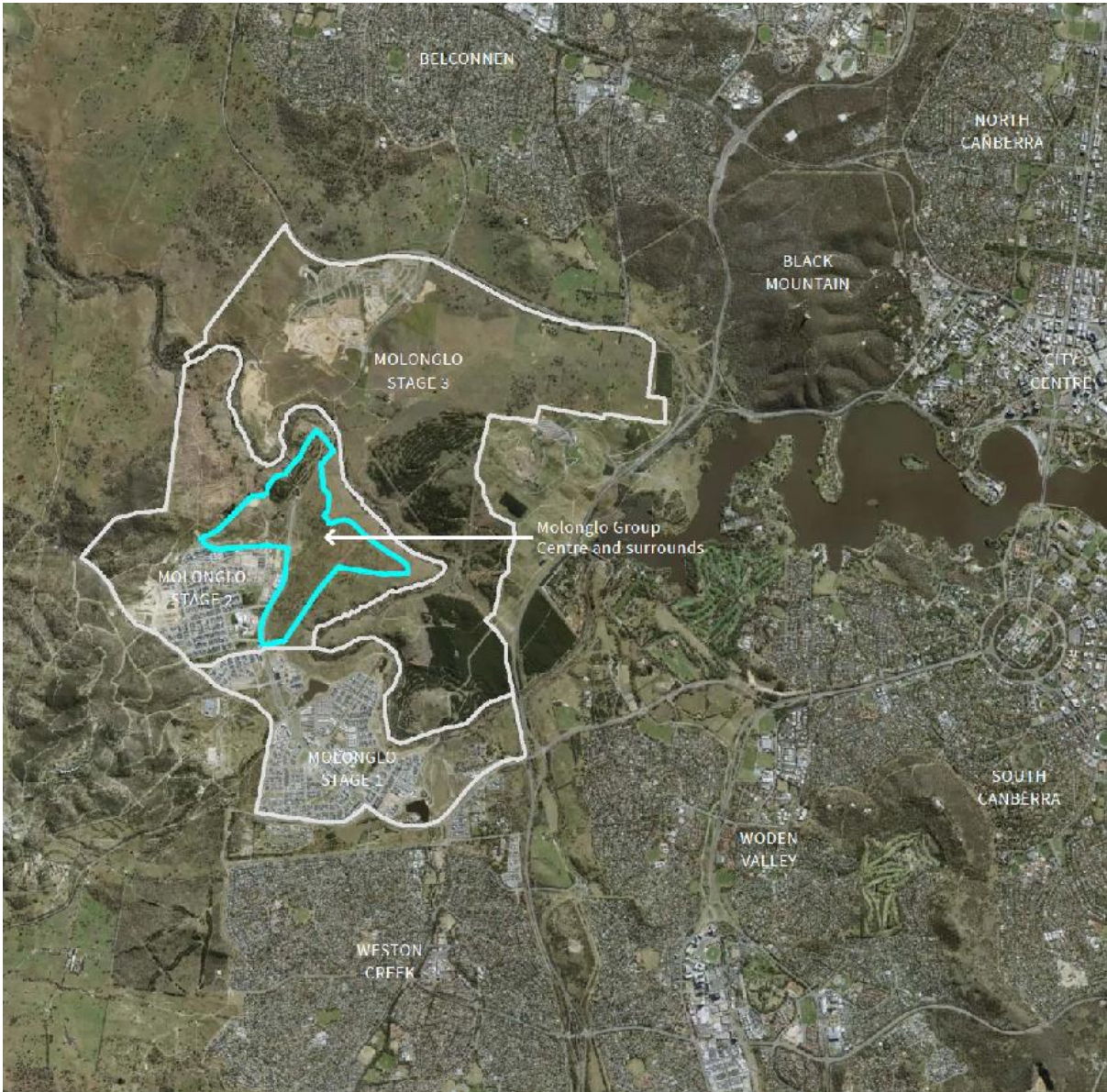


Figure 6 Molonglo Town Centre and surrounds – Precinct Location Plan



Figure 7 Molonglo Town Centre and surrounds – Community Facilities

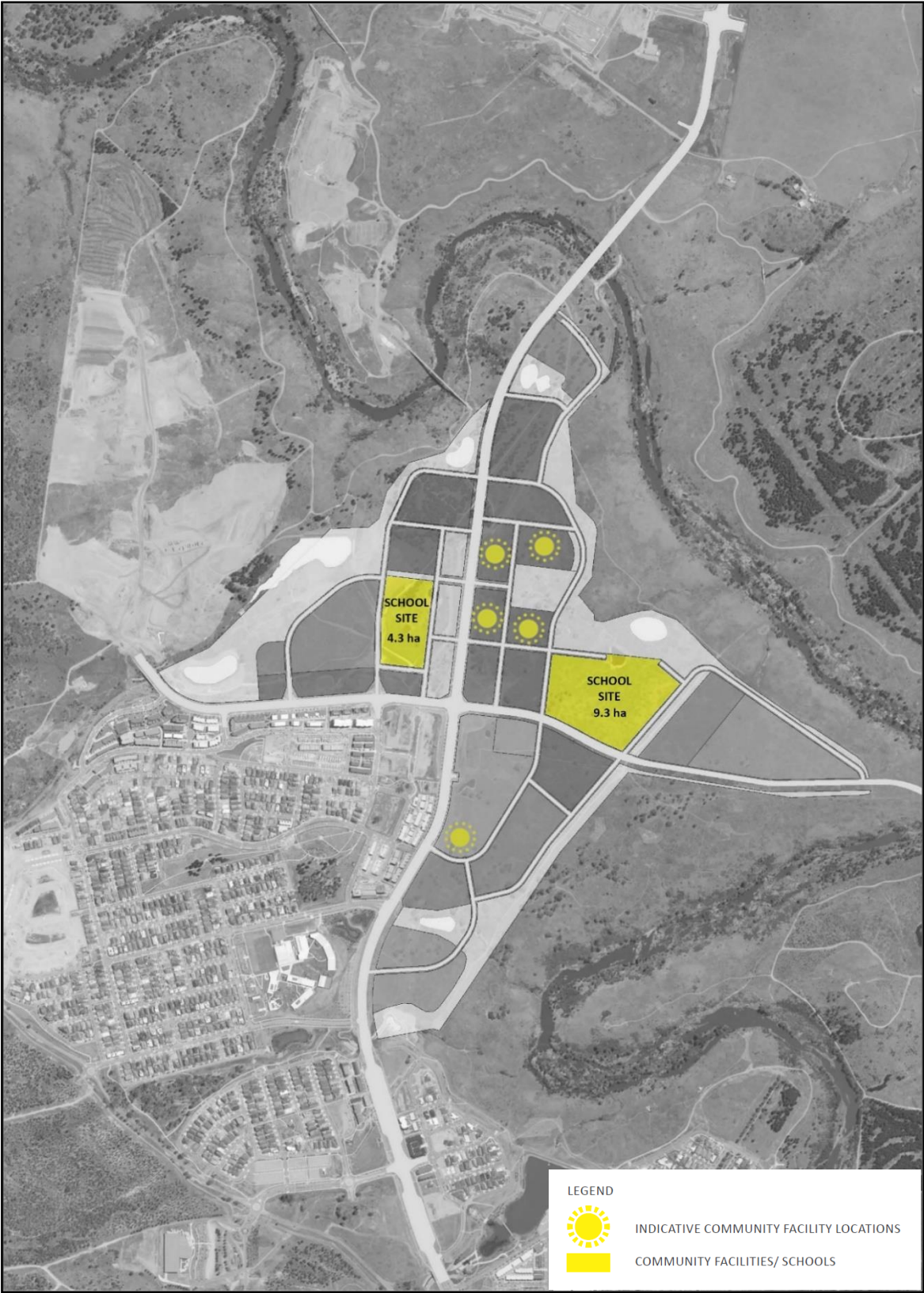


Figure 8 Molonglo Town Centre and surrounds – Open space Network and Parks

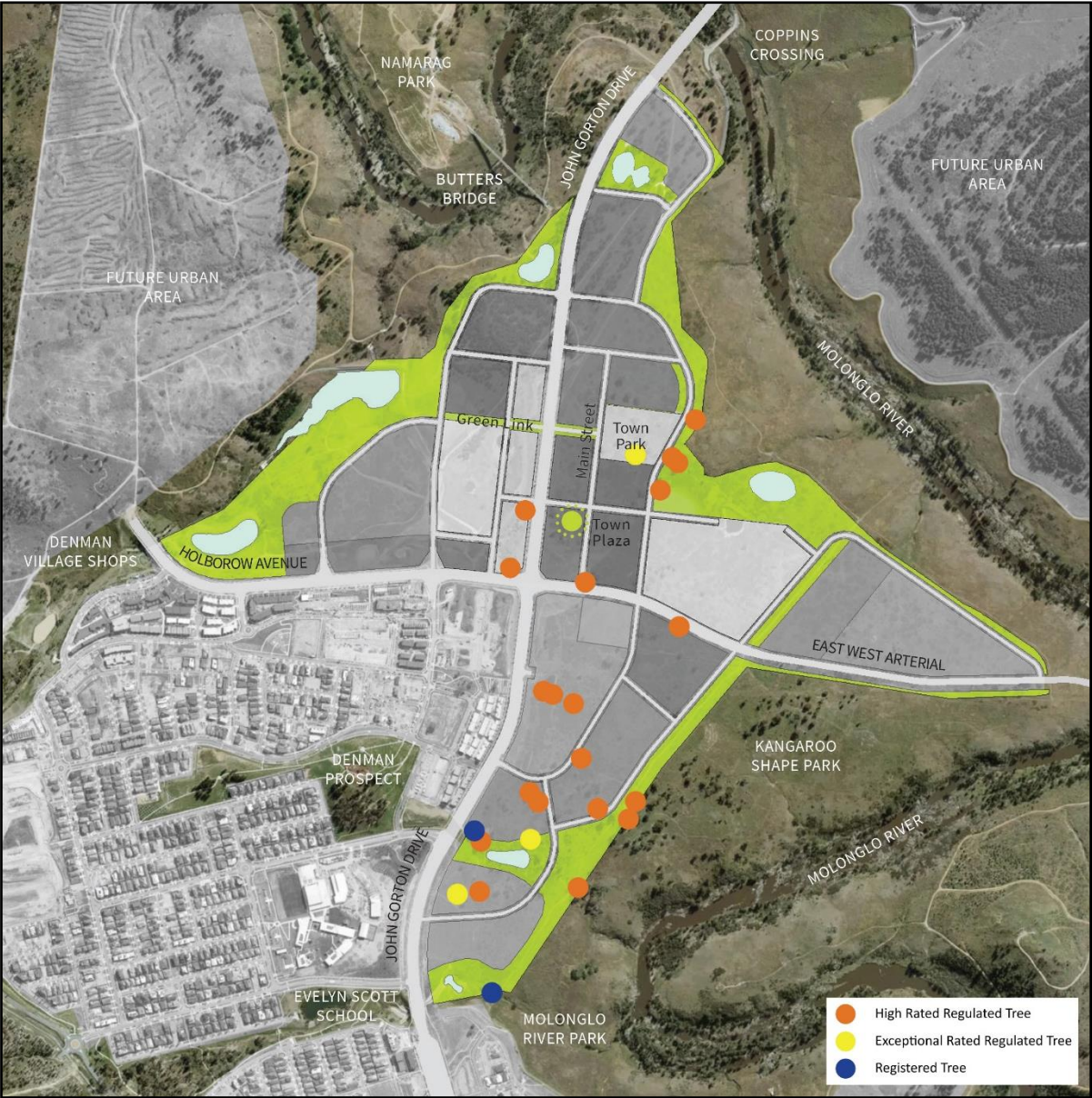


Figure 9 Molonglo Town Centre and surrounds – Street network and Hierarchy

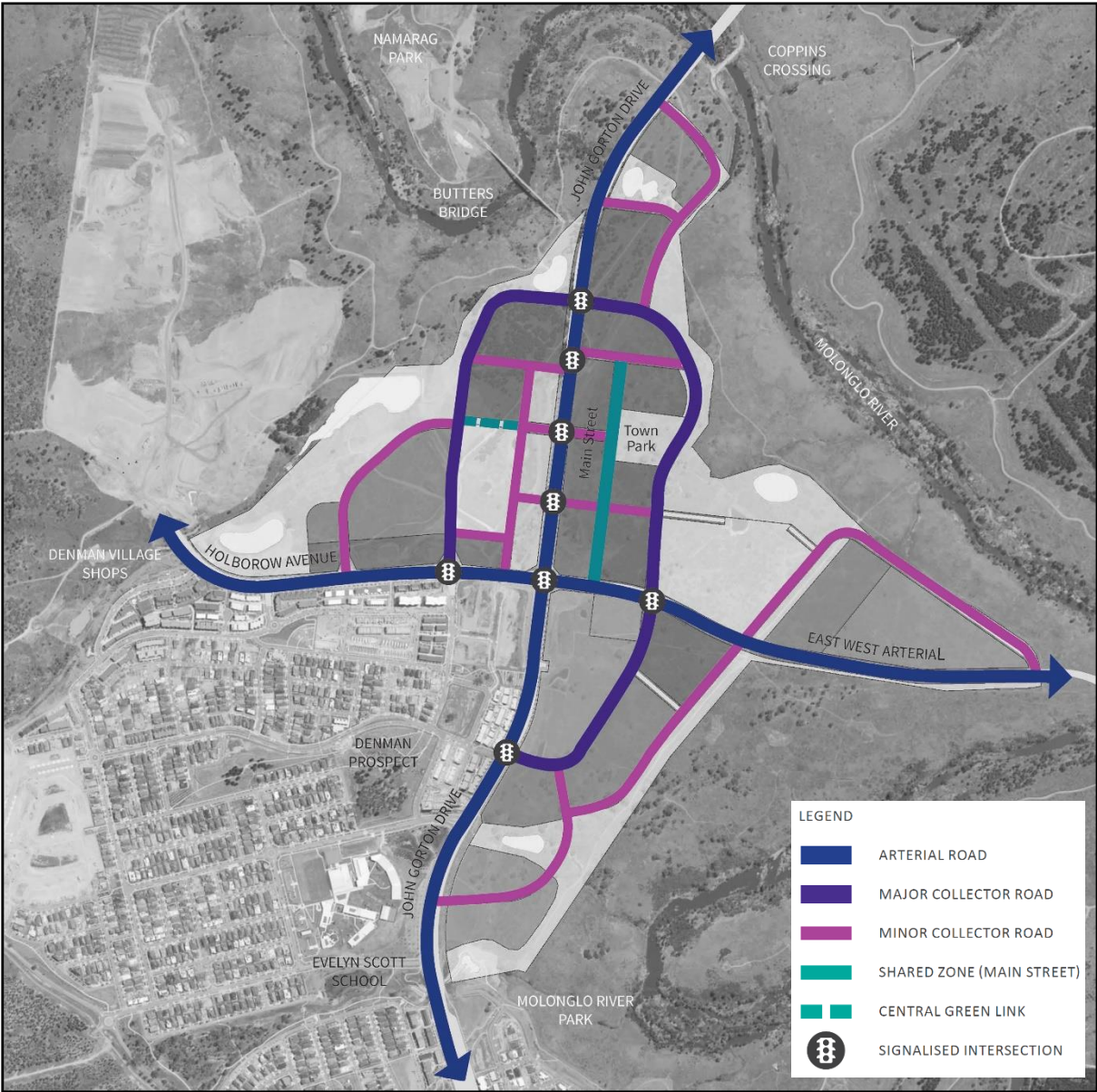


Figure 10 Molonglo Town Centre and surrounds – Public transport and indicative bus station location

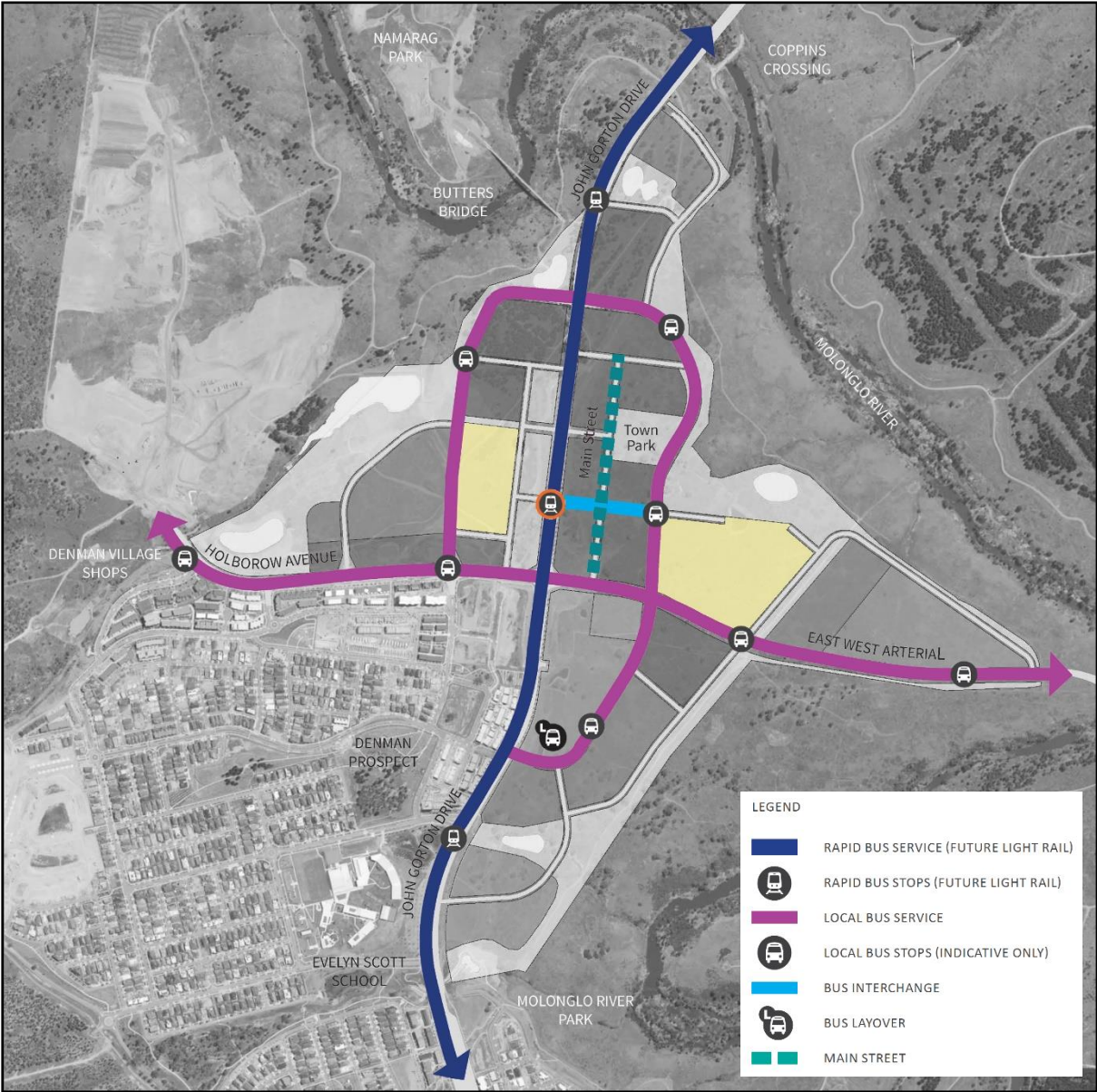


Figure 11 Molonglo Town Centre and surrounds – Active travel Networks

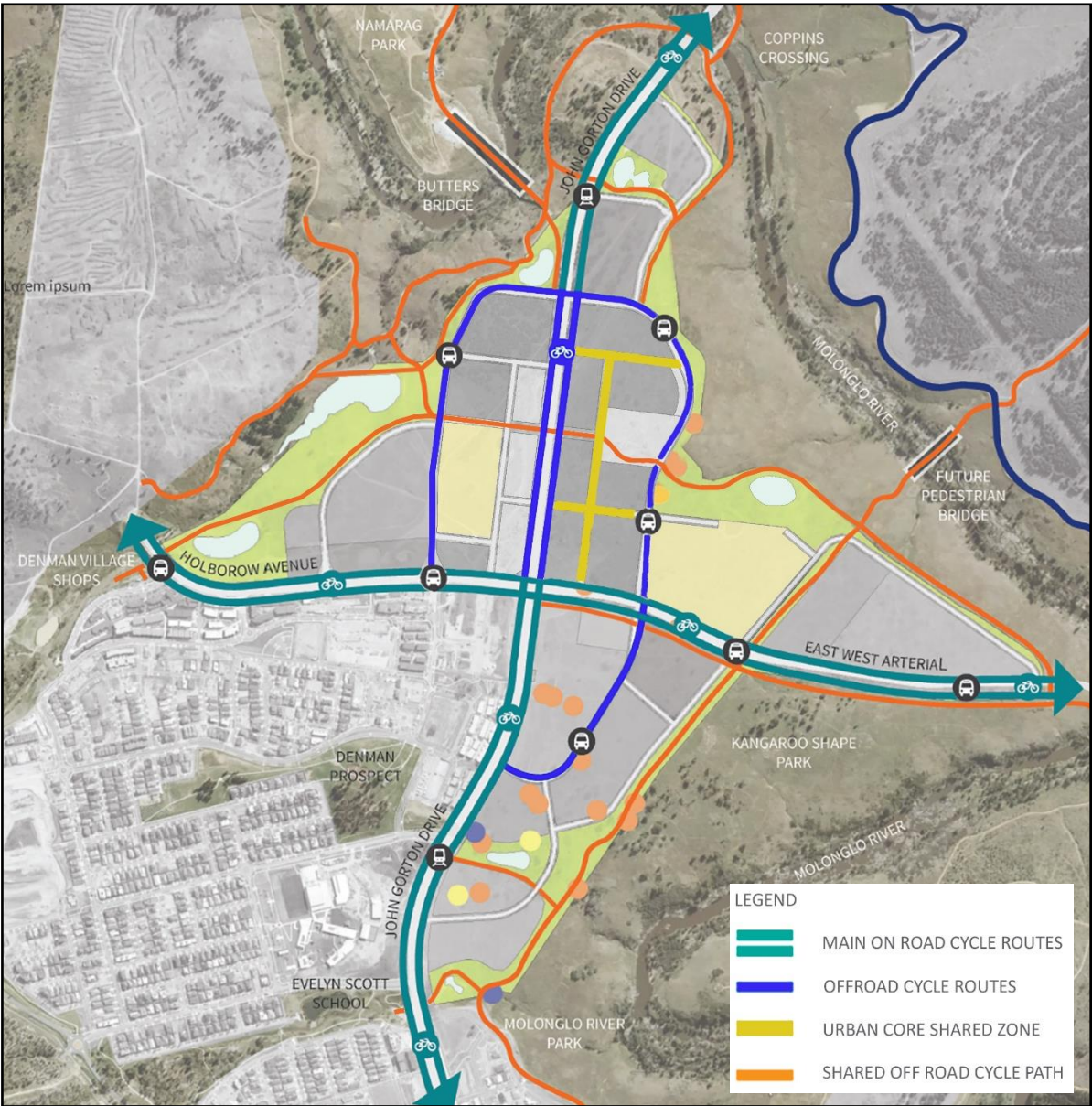


Figure 12 Molonglo Town Centre and surrounds – Bushfire Protection Zones



Diagram 1: Molonglo Town Centre and surrounds – Typical cross section of east-west arterial road

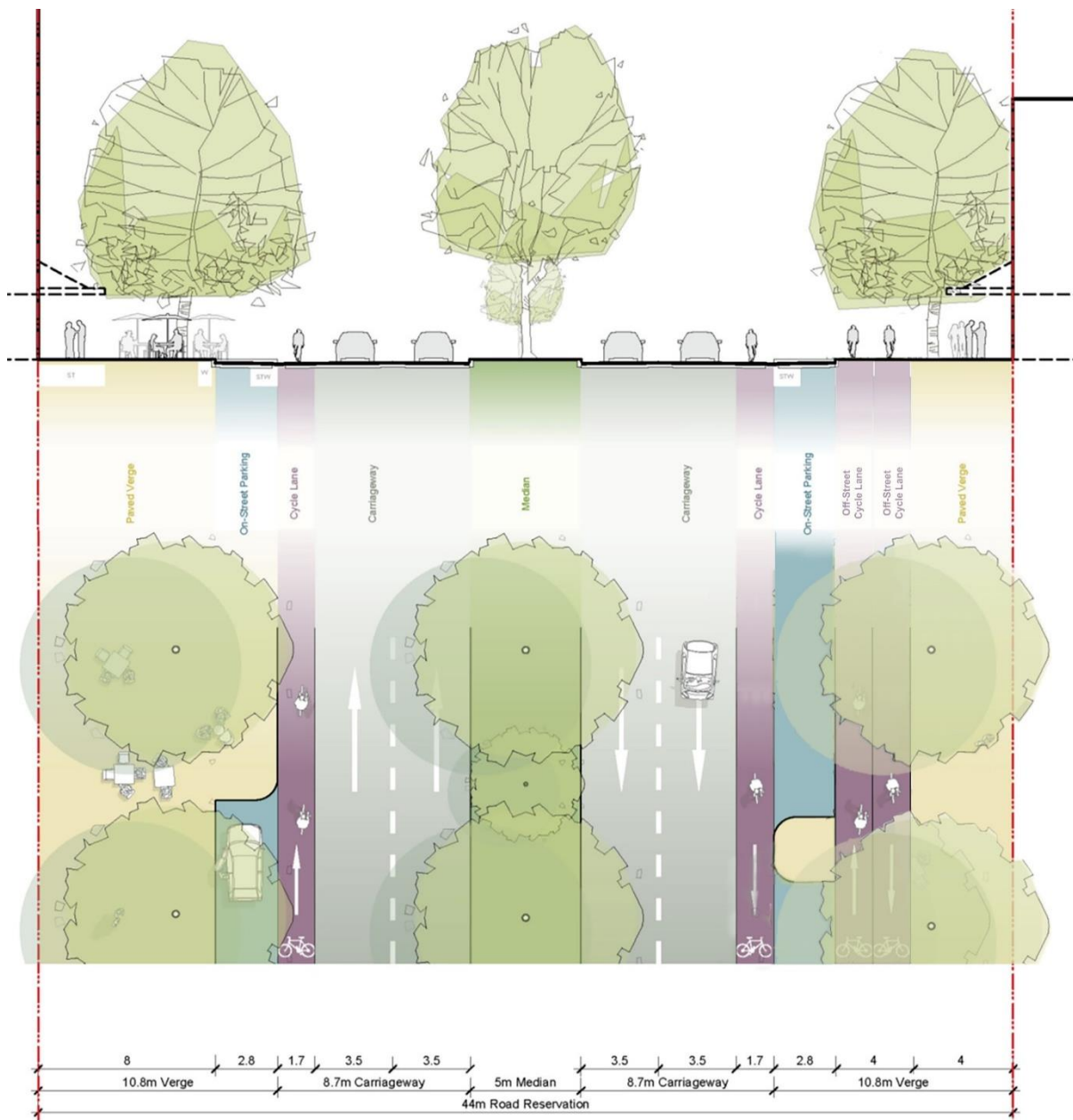


Image 1 Molonglo Town Centre and surrounds – Concept plan illustrative



Locality	Assessment requirement
Whitlam	
Noise	67. For blocks identified for acoustic protection in Figures 14 and 20 , the single level dwelling façade must be a minimum height of 3 metres and a maximum height of 4.5 metres above finished ground level. However, dwellings higher than 4.5m above finished ground level will require an individual acoustic assessment.
Building height	68. For blocks identified in Figure 18 , the minimum number of storeys is 2.
Specific requirement	69. Development complies with the requirements specified in Figures 13 , 14 , 15 , 16 , 17 , 18 , 19 , 20 , 21 and 21A .
Gas connections	70. No new gas network connections are allowed to all new or existing developments including redevelopments on CZ1 and CZ2 zoned land.
Active frontage	<p>70A. Active frontages are provided in accordance with Figure 21A.</p> <ul style="list-style-type: none"> a) Only the following uses are provided at ground floor level on nominated active frontages: <ul style="list-style-type: none"> i) Business agency. ii) Community activity centre. iii) Financial establishment. iv) Indoor entertainment facility. v) Indoor recreation facility. vi) Public agency. vii) Restaurant. viii) Shop b) Residential use is not permitted at ground floor level where active frontages are nominated, with the exception of apartment lobbies, foyers and lifts. c) The use of built form elements such as balconies, projections, awnings and hoods is required along nominated active frontages to provide shelter and ameliorate wind and downdraft in public areas.
Building height	70B. The maximum number of storeys is nominated in Figure 21A .
Vehicle access	70C. No vehicle access is provided from frontages as indicated in Figure 21A .
Setbacks	<p>70D. For blocks identified in Figure 21A the minimum boundary setbacks to all floor levels are nominated.</p> <p>Facades on the nominated frontage with the minimum boundary setback must be articulated with elements such as awnings, balconies, emphasised entrances, verandahs, colonnades and the like.</p>

Figure 13 Whitlam – Ongoing Provisions

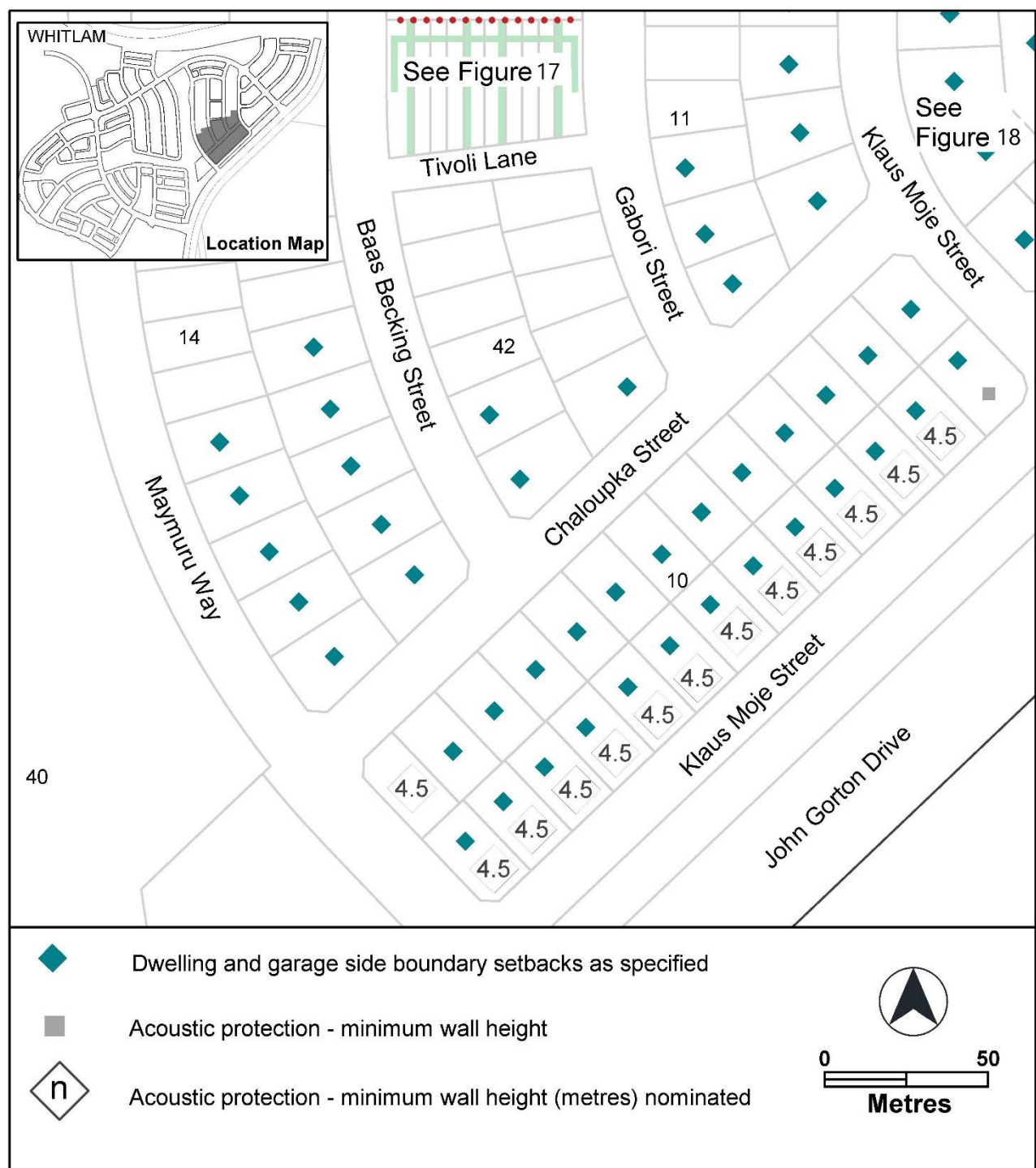


Figure 14 Whitlam – Ongoing Provisions

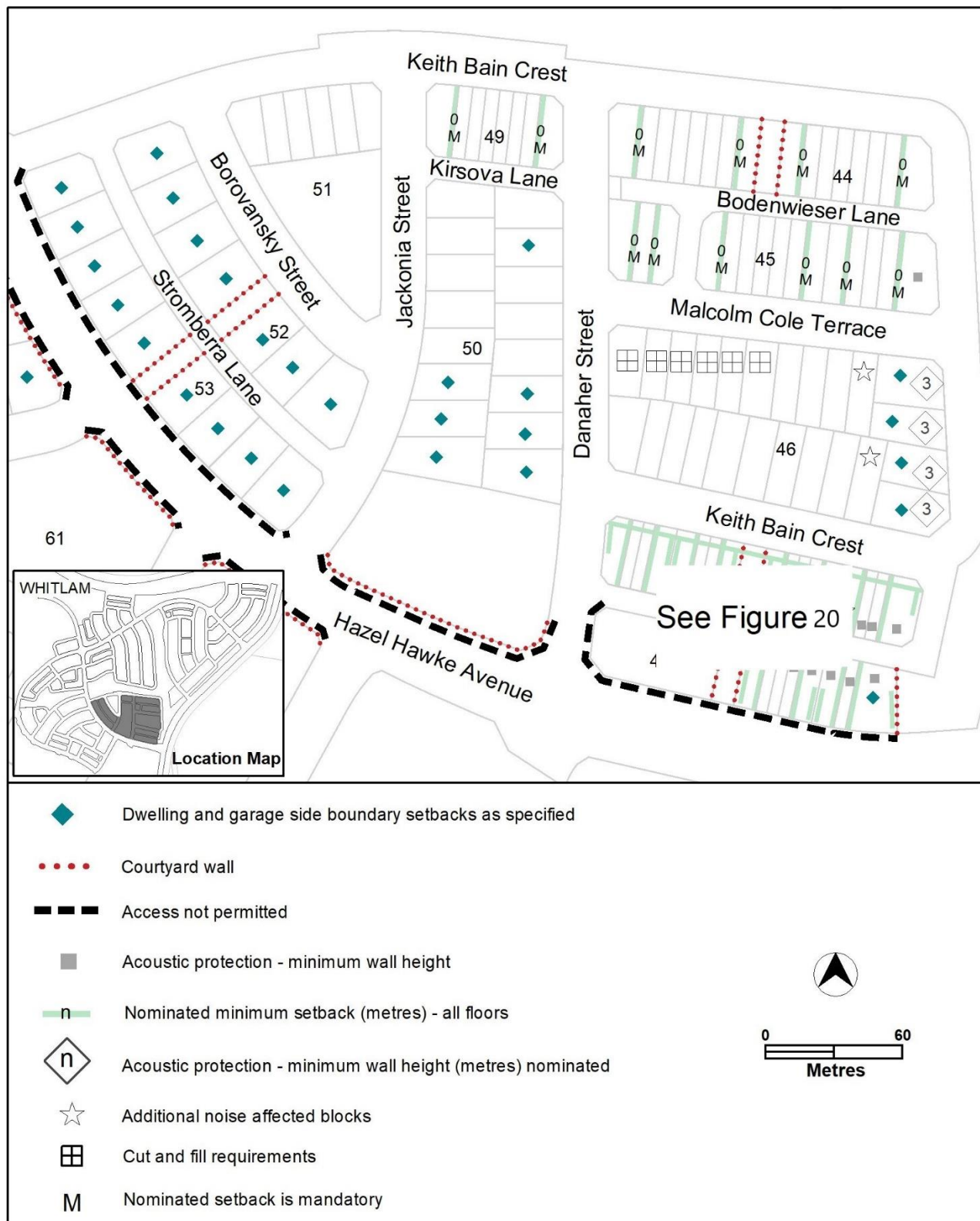


Figure 15 Whitlam – Ongoing Provisions



Figure 16 Whitlam – Ongoing Provisions



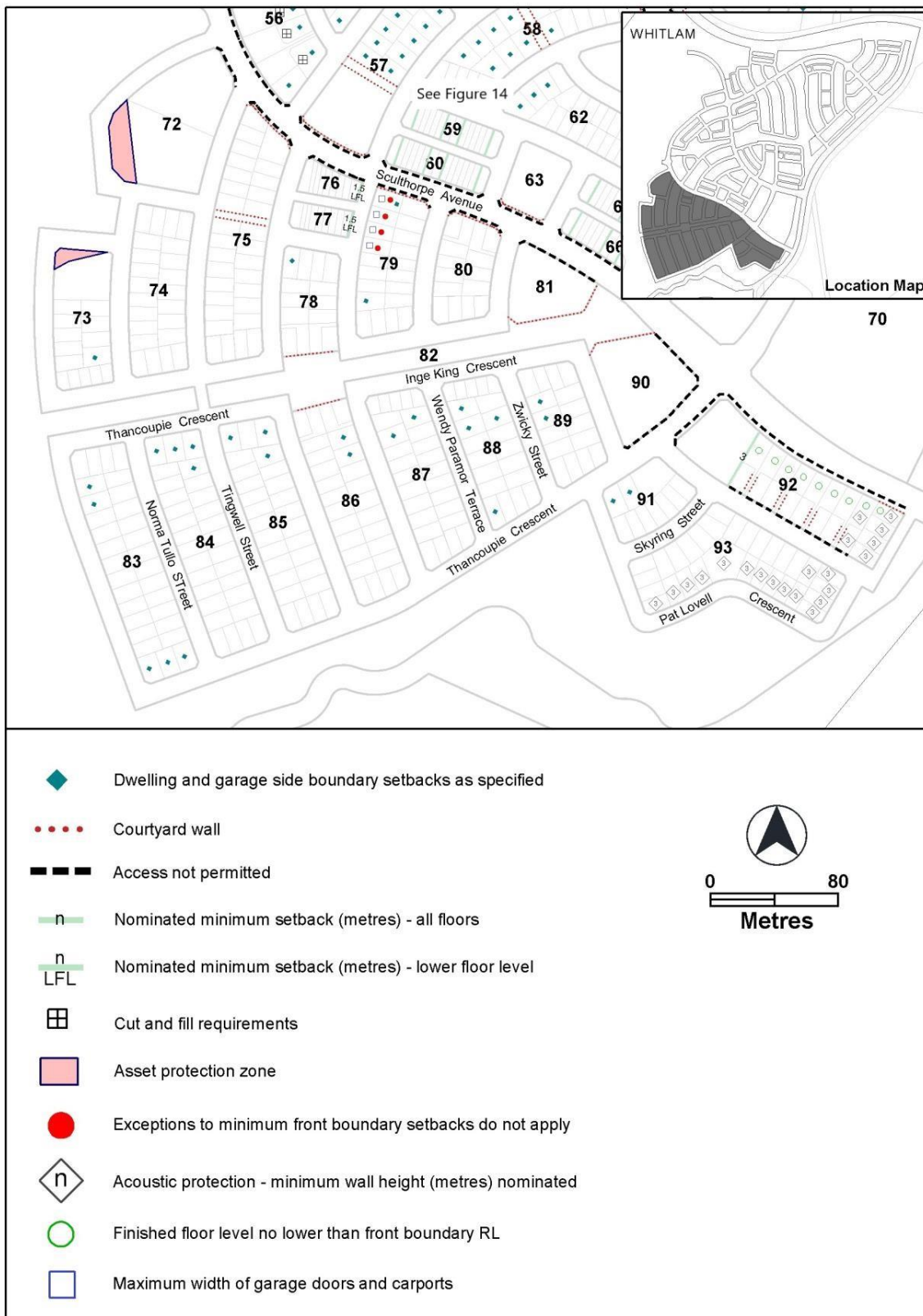
Figure 17 Whitlam – Ongoing Provisions



NI2023-540



Figure 19 Whitlam – Ongoing Provisions



NI2023-540

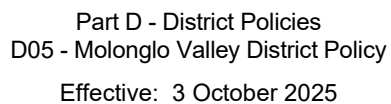


Figure 21 Whitlam – Ongoing Provisions

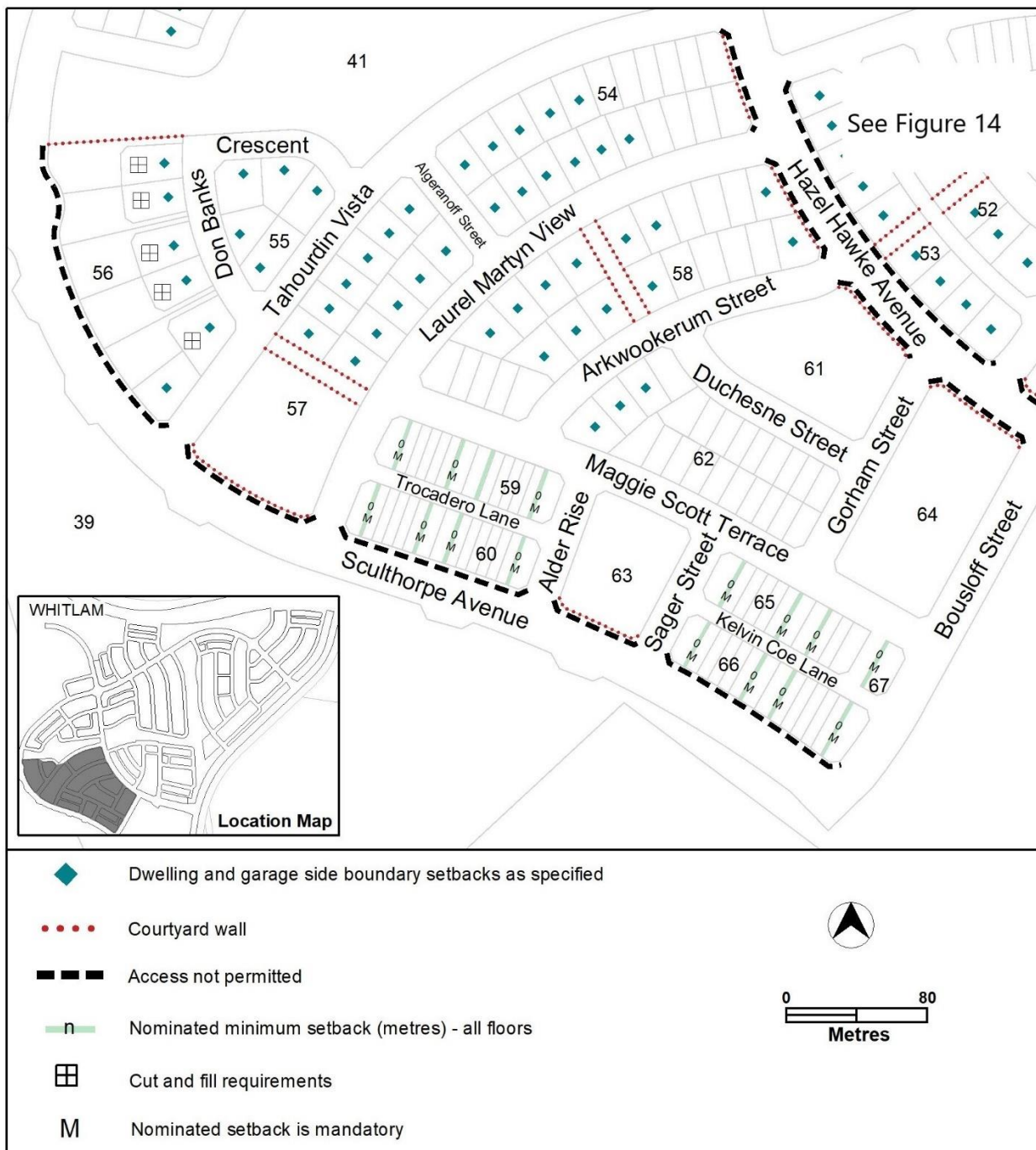
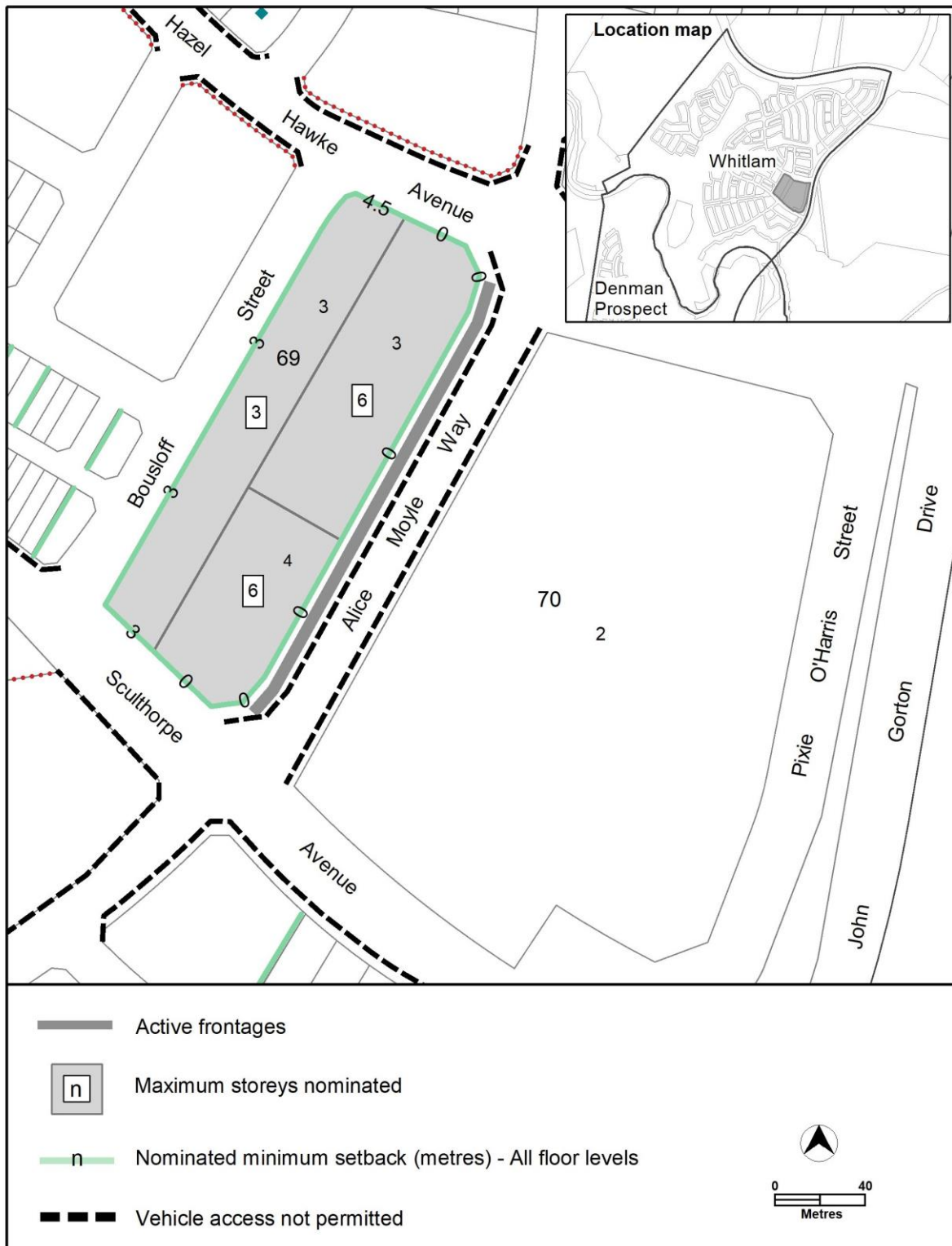


Figure 21A Whitlam – Ongoing Provisions



Locality	Assessment requirement
Wright	
Urban structure	<p>71. The boundary between urban blocks (other than single dwelling) and PRZ1 zoned land should provide the following:</p> <ul style="list-style-type: none"> a) Easy access to open space. b) Surveillance of open space. c) Avoid rear boundary fencing. d) Ground floor dwellings address open space where there is no edge street.
Active frontage	72. Active frontages are provided in accordance with Figure 23 .
Land use	<p>73. Areas nominated in Figure 22 comply with the following:</p> <ul style="list-style-type: none"> a) In the RC2 area: <ul style="list-style-type: none"> i. Are designed to be adaptable for commercial use where fronting Steve Irwin Avenue. ii. Address both streets.
Building height	<p>74. Areas nominated in Figure 22 comply with the following:</p> <ul style="list-style-type: none"> a) Have a minimum building height of 3 storeys. b) In the RC3 area minimum building height is: <ul style="list-style-type: none"> i. Buildings facing John Gorton Drive – 13m. ii. All other buildings – 10m.
Clearance zones	75. In the RC4 area – no buildings are to be erected in the Inner Asset Protection Zone.
Gas connections	76. No new gas network connections are allowed to all new or existing developments including redevelopments on CZ1 and CZ2 zoned land.

Figure 22 Wright – Ongoing Provisions

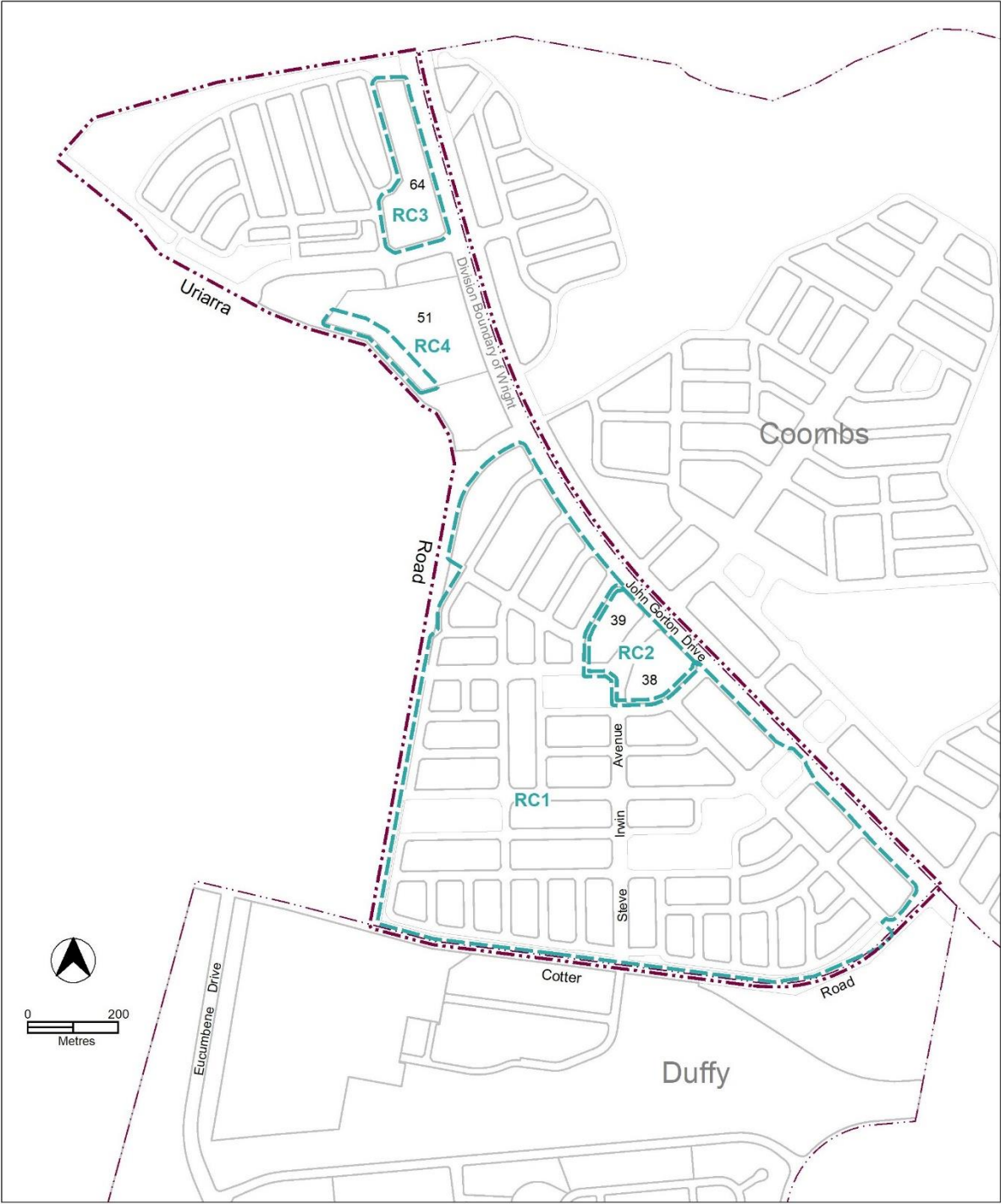
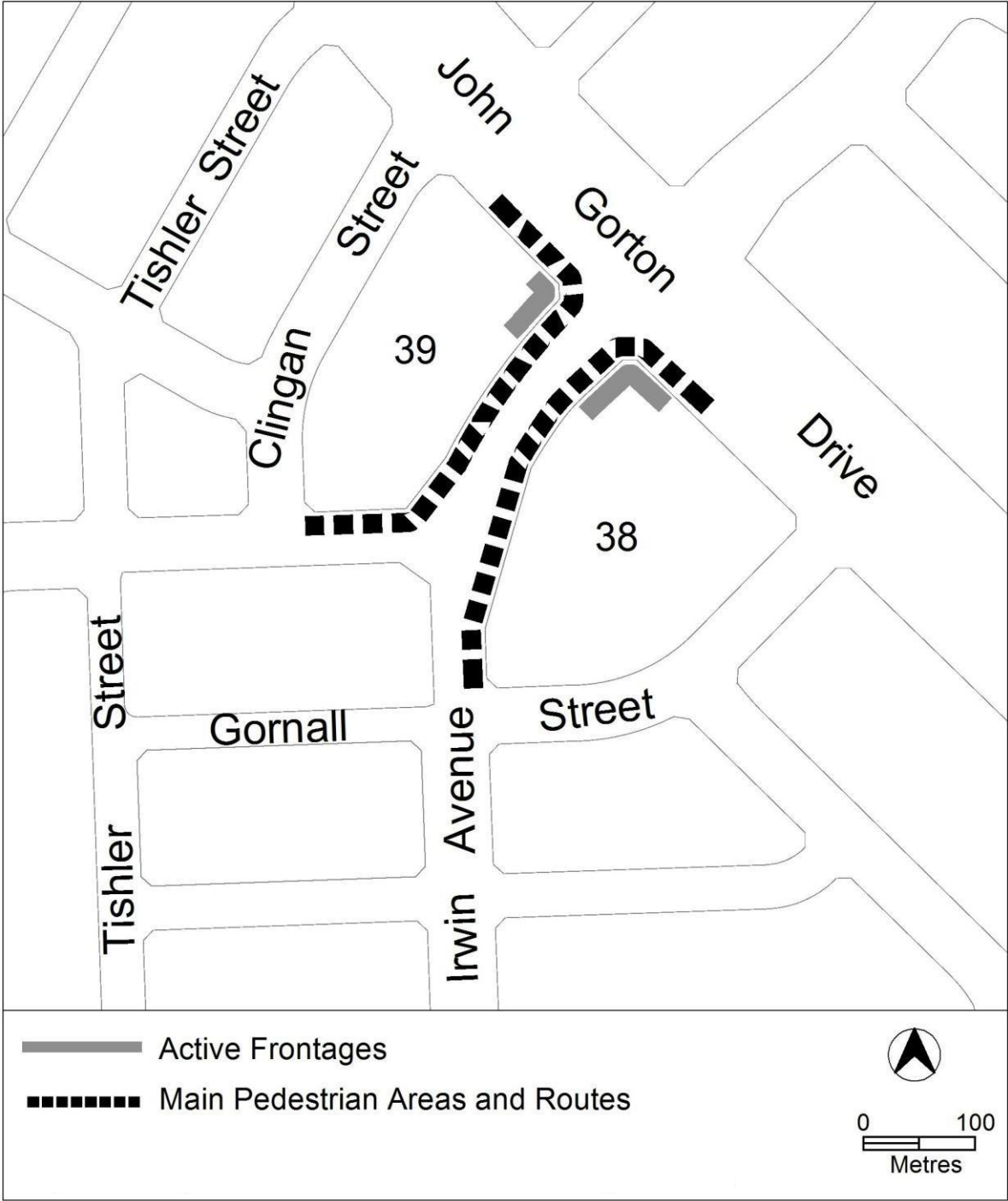


Figure 23 Wright – Active Frontages and Public Spaces



Figures – Assessable and Prohibited Development

Figure 24 Coombs

Link back to [Land Use Table](#)

