



Australian Capital Territory

Casino Control Regulation 2006

Subordinate Law SL2006-8

The Australian Capital Territory Executive makes the following regulation under the *Casino Control Act 2006*.

Dated 14 March 2006.

TED QUINLAN
Minister

SIMON CORBELL
Minister



Australian Capital Territory

Casino Control Regulation 2006

Subordinate Law SL2006-8

made under the

Casino Control Act 2006

Contents

	Page
1 Name of regulation	1
2 Commencement	1
3 Dictionary	1
4 Notes	1
5 Prescribed functions—Act, s 41 and dict, def <i>prescribed function</i>	2
6 Area to be designated casino—Act, s 62 (1)	3
7 Core trading hours—Act, s 68 (4), def <i>core trading hours</i>	3
8 Kinds of cheque to be accepted—Act, s 112 (1) (b) (i)	3
9 How to accept cheque—Act, s 112 (1) (b) (ii)	4
10 Amount prescribed for scheme—Act, dict, def <i>commission-based player scheme</i> , par (b)	4

Contents

Schedule 1	Designation of casino	Page 5
Part 1.1	First floor	5
Part 1.2	Ground floor	6
Part 1.3	Basement	7
Dictionary		8

1 Name of regulation

This regulation is the *Casino Control Regulation 2006*.

2 Commencement

This regulation commences on the commencement of the *Casino Control Act 2006*, section 3.

Note The naming and commencement provisions automatically commence on the notification day (see Legislation Act, s 75 (1)).

3 Dictionary

The dictionary at the end of this regulation is part of this regulation.

Note 1 The dictionary at the end of this regulation defines certain terms used in this regulation, and includes references (*signpost definitions*) to other terms defined elsewhere.

For example, the signpost definition ‘*commission-based player scheme*—see the Act, dictionary’ means that the term ‘commission-based player scheme’ is defined in that dictionary and the definition applies to this regulation.

Note 2 A definition in the dictionary (including a signpost definition) applies to the entire regulation unless the definition, or another provision of the regulation, provides otherwise or the contrary intention otherwise appears (see Legislation Act, s 155 and s 156 (1)).

4 Notes

A note included in this regulation is explanatory and is not part of this regulation.

Note See the Legislation Act, s 127 (1), (4) and (5) for the legal status of notes.

5 Prescribed functions—Act, s 41 and dict, def *prescribed function*

The following functions are prescribed as functions that may be performed by a casino employee in relation to the operation of the casino:

- (a) the conduct of gaming in the casino;
- (b) the organisation, administration and management of commission-based player schemes;
- (c) the organisation and conduct of casino marketing schemes;
- (d) the storage, exchange and counting of money and chips in the casino, other than in relation to the supply of food or beverages;
- (e) the movement of money and chips in the casino, other than in relation to the supply of food or beverages;
- (f) the storage of gaming equipment in the casino;
- (g) the security of the casino and its operations;
- (h) the surveillance of the casino and its operations;
- (i) the use and storage of security equipment;
- (j) the use of surveillance equipment;
- (k) the storage of surveillance equipment;
- (l) computer systems maintenance and support in the casino;
- (m) the unsupervised maintenance and repair of gaming equipment;
- (n) the unsupervised maintenance and repair of security and surveillance equipment in the casino;

- (o) the unsupervised access to administrative and financial information relating to the operation of the casino other than access by external auditors or company directors of the licensee or of the licensee's beneficial owners;
- (p) the supervision of anything mentioned in paragraphs (a) to (o);
- (q) management roles in the casino, including functions that include making decisions that involve the exercise of discretions that substantially affect, or could affect, the operation of the casino.

6 Area to be designated casino—Act, s 62 (1)

The areas outlined in bold on the plan in schedule 1, part 1.1, part 1.2 and part 1.3 are designated to be the casino.

7 Core trading hours—Act, s 68 (4), def *core trading hours*

The core trading hours are between midnight and 2 am and between 5 pm and midnight on any day.

8 Kinds of cheque to be accepted—Act, s 112 (1) (b) (i)

A cheque that meets the following requirements is prescribed:

- (a) the cheque is drawn in favour of the casino licensee or the person who presents the cheque;
- (b) the cheque is not postdated;
- (c) for a redeeming cheque—the cheque is not dated earlier than the date of the most recent of the cheques to be redeemed.

9 How to accept cheque—Act, s 112 (1) (b) (ii)

A casino licensee who accepts a cheque must—

- (a) be satisfied about the identity of the person who presents the cheque; and
- (b) keep a record of—
 - (i) any proof of identity that the person shows to the licensee; and
 - (ii) any inquiry the licensee makes to verify the person's identity; and
- (c) comply with any control procedures for accepting cheques.

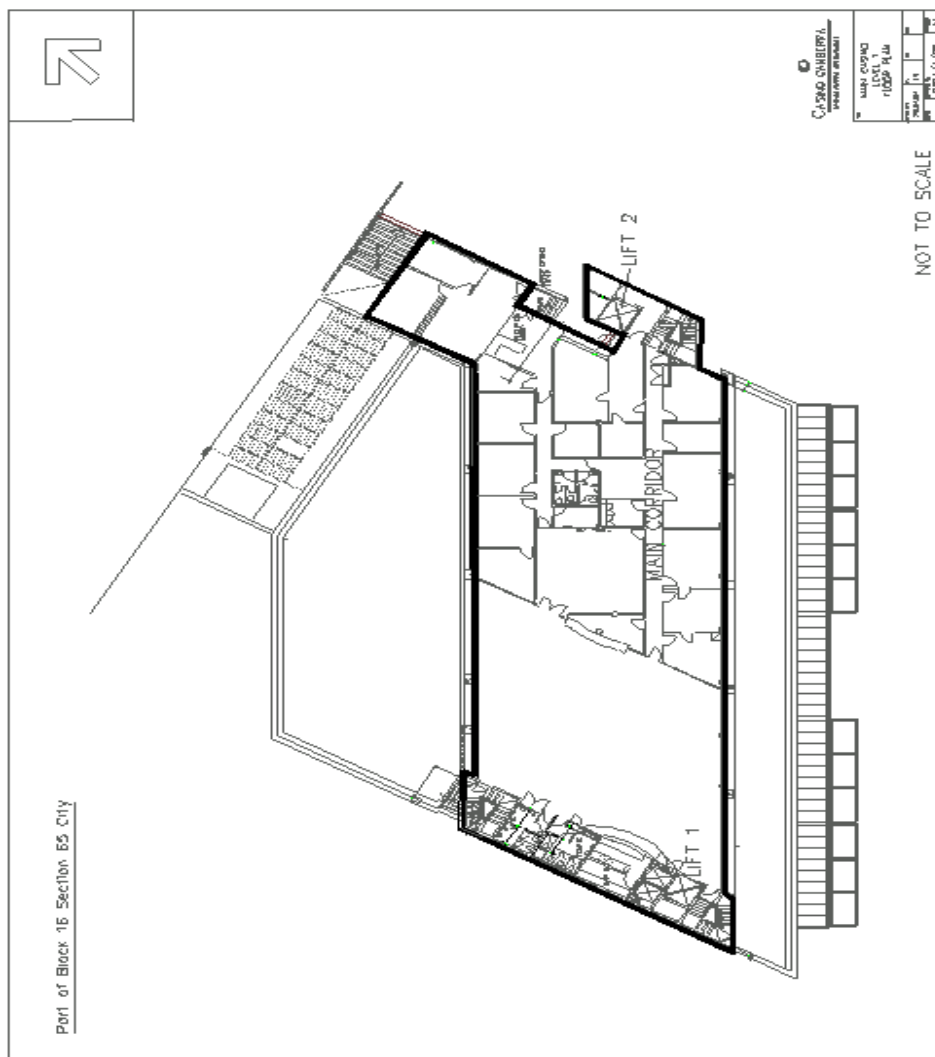
**10 Amount prescribed for scheme—Act, dict, def
commission-based player scheme, par (b)**

The prescribed amount is \$1 500.

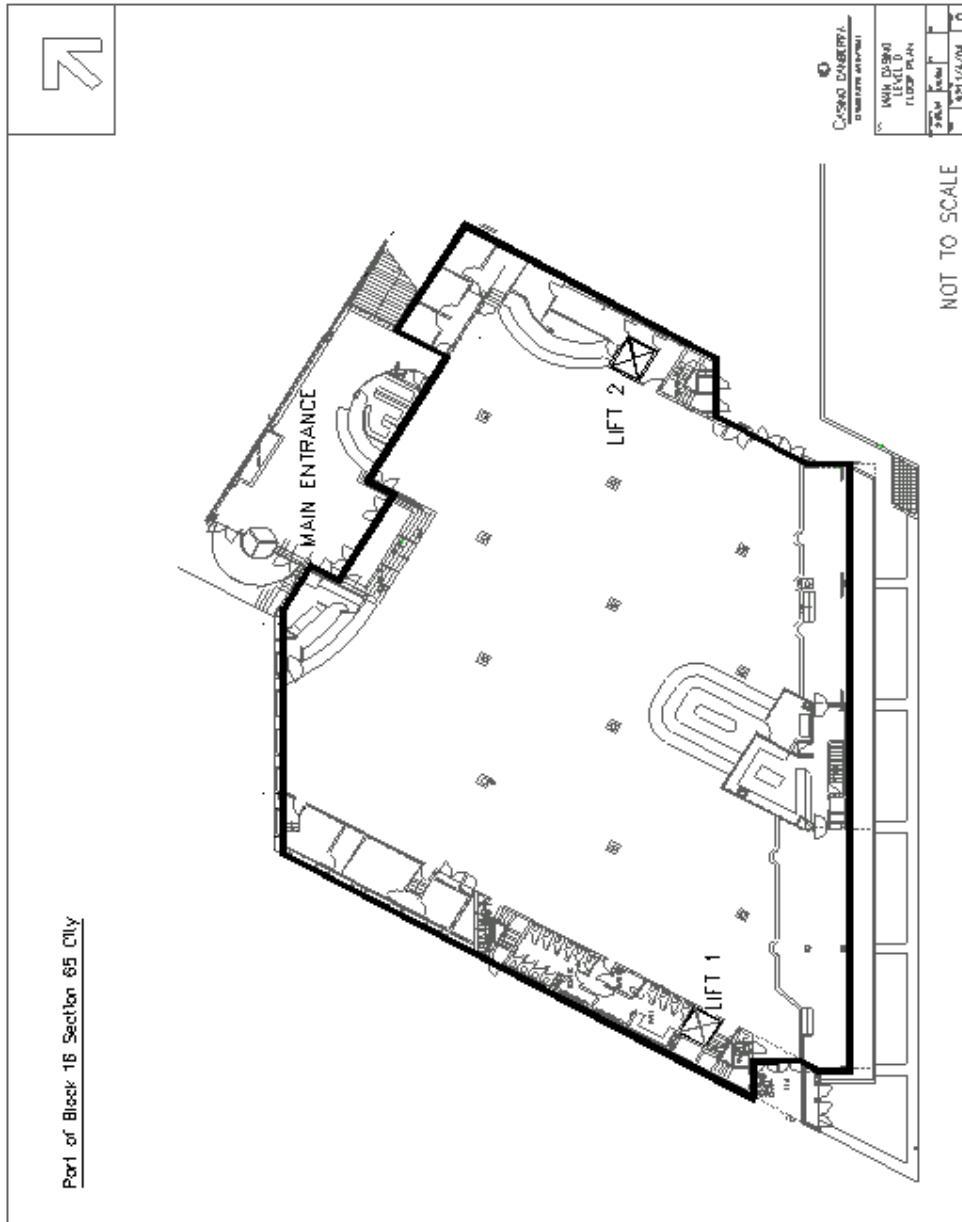
Schedule 1 Designation of casino

(see s 6)

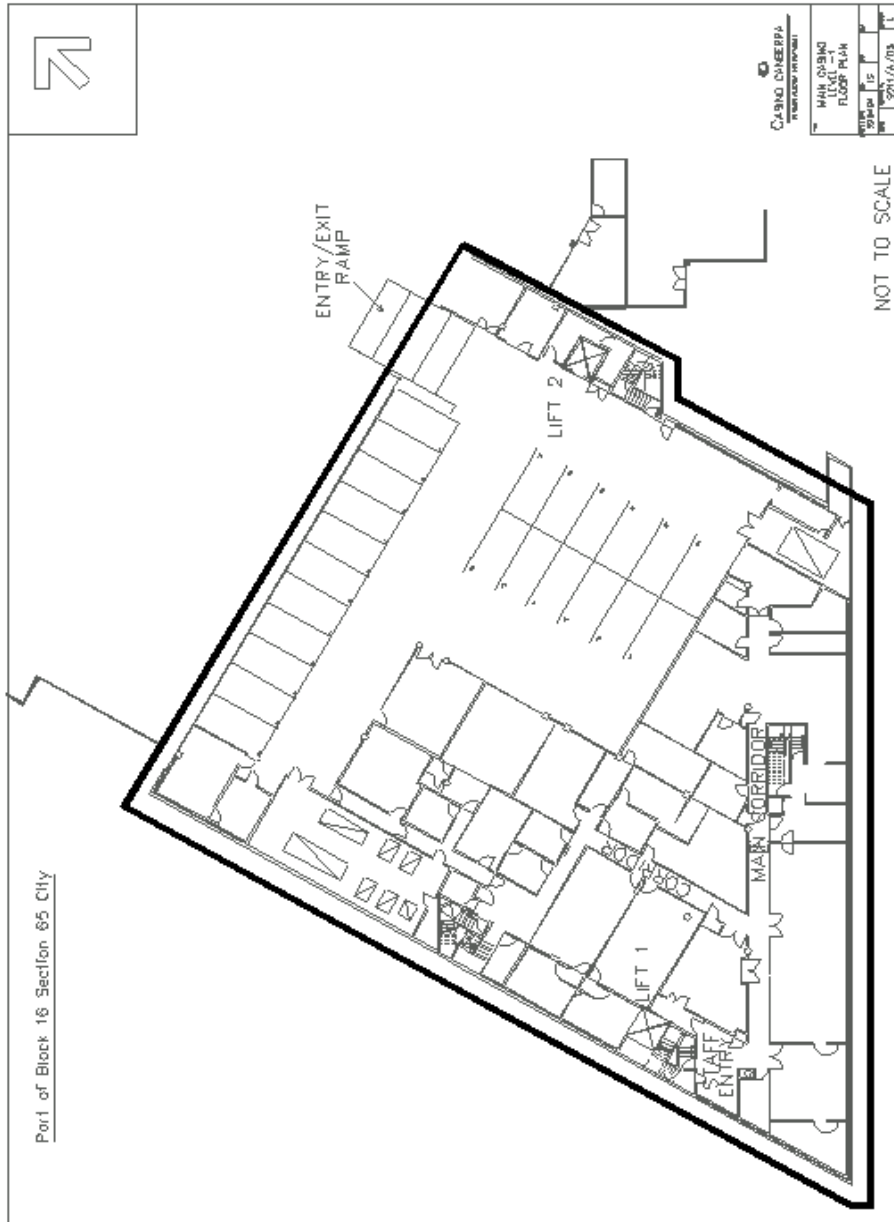
Part 1.1 First floor



Part 1.2 Ground floor



Part 1.3 Basement



Dictionary

(see s 3)

Note 1 The Legislation Act contains definitions and other provisions relevant to this regulation.

Note 2 For example, the Legislation Act, dict, pt 1, defines the following terms:

- Act
- function
- must (see s 146)
- prescribed.

Note 3 Terms used in this regulation have the same meaning that they have in the *Casino Control Act 2006* (see Legislation Act, s 148). For example, the following terms are defined in the *Casino Control Act 2006*, dict:

- control procedures
- gaming
- gaming equipment.

commission-based player scheme—see the Act, dictionary.

prescribed function—see the Act, dictionary.

Endnotes

1 Notification

Notified under the Legislation Act on 21 March 2005.

2 Republications of amended laws

For the latest republication of amended laws, see www.legislation.act.gov.au.

© Australian Capital Territory 2006