

Australian Capital Territory

Public Place Names (Moncrieff) Determination 2015 (No 8)

Disallowable instrument DI2015- 306

made under the

Public Place Names Act 1989 — section 3 (Minister to determine names)

I DETERMINE the names of the public places that are Territory land as specified in the attached schedule and as indicated on the associated plan.

Dorte Ekelund
Delegate of the Minister

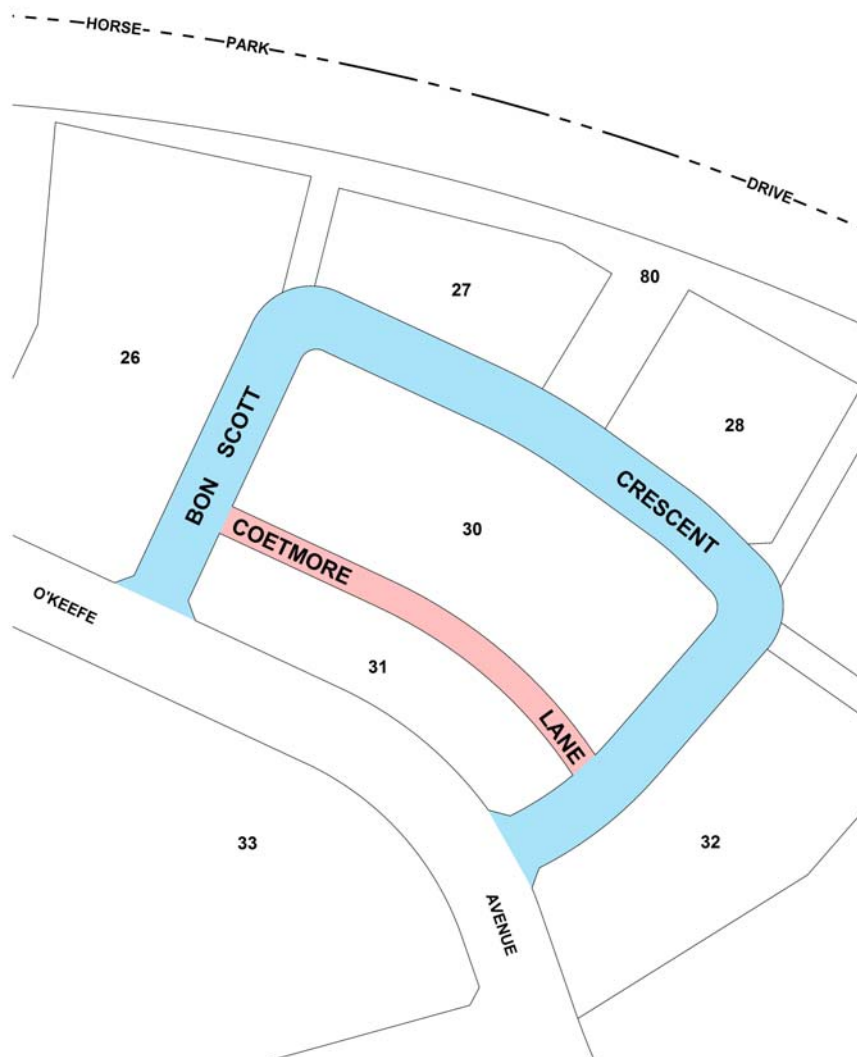
10 November 2015

SCHEDULE

Public Place Names (Moncrieff) Determination 2015 (No 8)

Division of Moncrieff: *Musicians and those associated with the field of music*

NAME	ORIGIN	SIGNIFICANCE
Bon Scott Crescent	Ronald Belford (Bon) Scott (1946-1980)	Music – rock musician, singer and lyricist Scottish-born Australian rock musician Bon Scott was lead singer and lyricist with hard rock band AC/DC from 1974 until 1980. He formed his first band in 1964 then performed in several others including The Valentines. He moved to Adelaide in 1970 and toured the UK with the band Fraternity in 1973. After singing with the Mount Lofty Rangers he was invited to be lead singer of AC/DC in 1974. The band released their first album <i>High Voltage</i> in 1975. Other releases in Australia, the UK or USA included <i>T.N.T.</i> , <i>Dirty Deeds Done Dirt Cheap</i> , <i>Let There Be Rock</i> , <i>Powerage</i> , and <i>Highway to Hell</i> in 1979. Though Bon Scott died in London aged 33 years, the band was able to continue. His ashes are interred at Fremantle, WA where his much visited grave is heritage listed and he is honoured with a memorial arch and a statue.
Coetmore Lane	Kathleen Peers Coetmore Jones (1905-1976)	Music – cellist, music teacher British-born cellist, Peers Coetmore was an exceptional student at the Royal Academy of Music, winning several prizes. She first met composer Ernest John (Jack) Moeran in 1930. One of the outcomes of this relationship was a number of violoncello (cello) works dedicated to Peers. During World War II she travelled Europe and the Middle East on tour entertaining British troops, and married Moeran in 1945. Her career flourished as she premiered a number of his compositions, most importantly his cello concerto. Following Moeran's death, Coetmore emigrated to Melbourne in 1950 and established herself as a prominent musical figure, both as a touring performer and as a chamber musician. She performed with the Victorian Symphony Orchestra and taught at the Melbourne Conservatorium in 1951 and 1959-76, the Victorian College of the Arts 1974-76 and privately. A scholarship in her name is awarded annually by the University of Melbourne to encourage worthy cello students.



DIVISION OF MONCRIEFF